

Product datasheet for **RG236170**

PMP22 (NM_001281456) Human Tagged ORF Clone

Product data:

Product Type: Expression Plasmids
Product Name: PMP22 (NM_001281456) Human Tagged ORF Clone
Tag: TurboGFP
Symbol: PMP22
Synonyms: CIDP; CMT1A; CMT1E; DSS; GAS-3; GAS3; HMSNIA; HNPP; Sp110
Mammalian Cell Selection: Neomycin
Vector: pCMV6-AC-GFP (PS100010)
E. coli Selection: Ampicillin (100 ug/mL)
ORF Nucleotide Sequence: >RG236170 representing NM_001281456.
 Blue=ORF Red=Cloning site Green=Tag(s)

```
GCTCGTTTAGTGAACCGTCAGAATTTGTAAACGACTCACTATAGGGCGCCGGGAATTCGTCGACTG
GATCCGGTACCGAGGAGATCTGCCGCCGCGATCGCC
ATGCTCCTCCTGTTGCTGAGTATCATCGTCCTCCACGTCGCGGTGCTGGTCTGCTGTTTCGCTCCACG
ATCGTCAGCCAATGGATCGTGGGCAATGGACACGCAACTGATCTCTGCCAGAACTGTAGCACCTCTTCC
TCAGGAAATGTCCACCACTGTTTCTCATCATCACCAAACGAATGGCTGCAGTCTGTCCAGGCCACCATG
ATCCTGTCGATCATCTTCAGCATTCTGTCTCTGTTCTTCTGCGCAACTCTTCACCCTCACCAAG
GGGGCAGGTTTTACATCACTGGAATCTTCAAATCTTGCTGGTCTGTGCGTGATGAGTCTGCGGCC
ATCTACACGGTGAGGCACCCGGAGTGGCATCTCAACTCGGATTACTCCTACGGTTTCGCCTACATCCTG
GCCTGGGTGGCCTTCCCCTGGCCCTTCTCAGCGGTGTCATCTATGTGATCTTGGGAAACGCGAA
ACGCGTACGCGGCCGCTCGAG - GFP Tag - GTTTAAAC
```

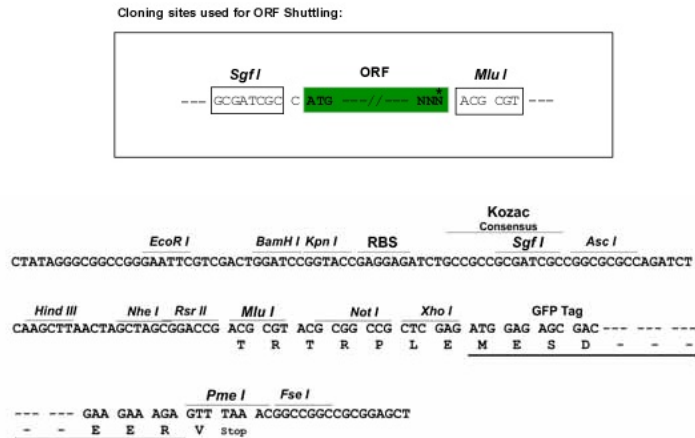
Protein Sequence: >Peptide sequence encoded by RG236170
 Blue=ORF Red=Cloning site Green=Tag(s)

```
MLLLLLSIIVLHVAVLVLLFVSTIVSQWIVGNHATDLWQNCSTSSSGNVHHCFS SSPNEWLQSVQATM
ILSIIIFSILSLFFCQLFTLTKGRFYITGIFQILAGLCVMSAAAIYVRHPEWHLNSDYSYGFAYIL
AWWAFPLALLSGVIYVILRKRE
TRTRPLEMESDESGLPAMEIECRITGTLNGVEFELVGGEGTPEQGRMTNKMSTKGALTFSPYLLSHV
MGYGFYHFGTYPYSGYENPFLHAINNGGYNTRIEKYEDGGVLHVSFSYRYEAGRVIGDFKVMGTGFPED
SVIFTDKIIRSNATVEHLHPMGDNDLDGSFTRTFSLRDGGYSSVVD SHMHFSAIHPSILQNGGPMFA
FRRVEEDHSNTELGIVEYQHAFKTPDADAGEERV
```

Restriction Sites: Sgfl-MluI



[View online »](#)

Cloning Scheme:


ACCN: NM_001281456

ORF Size: 480 bp

OTI Disclaimer: The molecular sequence of this clone aligns with the gene accession number as a point of reference only. However, individual transcript sequences of the same gene can differ through naturally occurring variations (e.g. polymorphisms), each with its own valid existence. This clone is substantially in agreement with the reference, but a complete review of all prevailing variants is recommended prior to use. [More info](#)

OTI Annotation: This clone was engineered to express the complete ORF with an expression tag. Expression varies depending on the nature of the gene.

Components: The ORF clone is ion-exchange column purified and shipped in a 2D barcoded Matrix tube containing 10ug of transfection-ready, dried plasmid DNA (reconstitute with 100 ul of water).

RefSeq: [NM_001281456.2](#)

RefSeq Size: 1857 bp

RefSeq ORF: 483 bp

Locus ID: 5376

UniProt ID: [Q01453](#)

Cytogenetics: 17p12

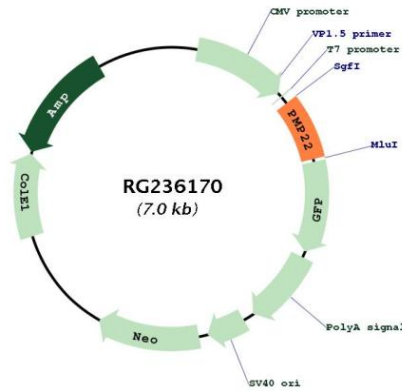
Protein Families: Transmembrane

MW: 17.9 kDa

Gene Summary:

This gene encodes an integral membrane protein that is a major component of myelin in the peripheral nervous system. Studies suggest two alternately used promoters drive tissue-specific expression. Various mutations of this gene are causes of Charcot-Marie-Tooth disease Type IA, Dejerine-Sottas syndrome, and hereditary neuropathy with liability to pressure palsies. Alternative splicing results in multiple transcript variants. [provided by RefSeq, Jul 2013]

Product images:



Circular map for RG236170