

## Product datasheet for **RG236165**

### **SURF4 (NM\_001280789) Human Tagged ORF Clone**

#### Product data:

**Product Type:** Expression Plasmids  
**Product Name:** SURF4 (NM\_001280789) Human Tagged ORF Clone  
**Tag:** TurboGFP  
**Symbol:** SURF4  
**Synonyms:** ERV29  
**Mammalian Cell Selection:** Neomycin  
**Vector:** pCMV6-AC-GFP (PS100010)  
**E. coli Selection:** Ampicillin (100 ug/mL)  
**ORF Nucleotide Sequence:** >RG236165 representing NM\_001280789.  
Blue=ORF Red=Cloning site Green=Tag(s)

```
GCTCGTTTAGTGAACCGTCAGAATTTTGTAAACGACTCACTATAGGGCGGCCGGGAATTCGTCGACTG
GATCCGGTACCGAGGAGATCTGCCGCCGCGATCGCC
ATGGGCCAGAACGACCTGATGGGCACGGCCGAGGACTTCGCCGACCAGTTCCTCCGTGCACAAAGCAG
TACCTGCCCCACGTGGCGCGCTCTGTCTGATCAGCACCTTCTGGAGGACGGCATCCGTATGTGGTTC
CAGTGGAGCGAGCAGCGGACTACATCGACACCACCTGGAAGTCCGCTACCTGCTGGCCTCGTCTTC
GTCTTCTCAACTTGCTGGGACAGCTGACTGGCTGCGTCTGGTGTGAGCAGGAACCTCGTGCAGTAC
GCCTGCTTCGGGCTCTTGGAAATCATAGCTCTGCAGACGATTGCCTACAGCATTTTATGGGACTTGAAG
TTTTTGATGAGGAACCTGGCCCTGGGAGGAGCCCTGTTGCTGCTCCTAGCAGAATCCCGTCTGAAGGG
AAGAGCATGTTTGCGGGGTCCCCACCATGCGTGAGAGCTCCCCAAACAGTACCTGCCTGGC
ACGCGTACGCGGCCGCTCGAG - GFP Tag - GTTTAAAC
```

**Protein Sequence:** >Peptide sequence encoded by RG236165  
Blue=ORF Red=Cloning site Green=Tag(s)

```
MGQNDLMGTAEDFADQFLRVTKQYLPHVARLCLISTFLEDGIRMWFQWSEQRDYIDTTWNCGYLLASSF
VFLNLLGQLTGCVLVLSRNFVQYACFLFGIIALQTIAYSILWDLKFLMRNLALGGLLLLLAESRSEG
KSMFAGVPTMRESSPKQYLPG
TRTRPLEMESDESGLPAMEIECRITGTLNGVEFELVGGEGTPEQGRMTNKMSTKGALTFSPYLLSHV
MGYGFYHFGTYPYSGYENPFLHAINNGGYNTRIEKYEDGGVLHVSFSYRYEAGRVIGDFKVMGTGFPED
SVIFTDKIIRSNATVEHLHPMGDNDLDGSFTRTFSLRDGGYSSVVDSHMHFKSAIHPSILQNGGPMFA
FRRVEEDHSNTELGIVEYQHAFKTPDADAGEERV
```

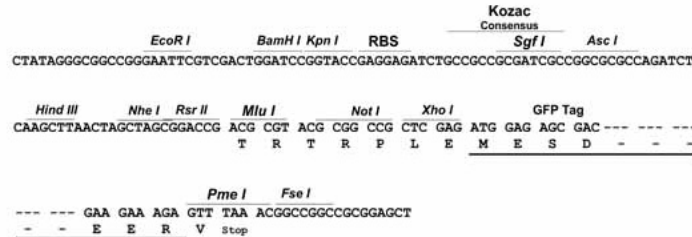
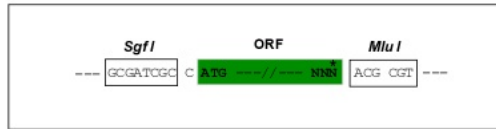
**Restriction Sites:** SgfI-MluI



[View online »](#)

**Cloning Scheme:**

Cloning sites used for ORF Shutting:



**ACCN:** NM\_001280789

**ORF Size:** 477 bp

**OTI Disclaimer:** The molecular sequence of this clone aligns with the gene accession number as a point of reference only. However, individual transcript sequences of the same gene can differ through naturally occurring variations (e.g. polymorphisms), each with its own valid existence. This clone is substantially in agreement with the reference, but a complete review of all prevailing variants is recommended prior to use. [More info](#)

**OTI Annotation:** This clone was engineered to express the complete ORF with an expression tag. Expression varies depending on the nature of the gene.

**Components:** The ORF clone is ion-exchange column purified and shipped in a 2D barcoded Matrix tube containing 10ug of transfection-ready, dried plasmid DNA (reconstitute with 100 ul of water).

**RefSeq:** [NM\\_001280789.2](#)

**RefSeq Size:** 2709 bp

**RefSeq ORF:** 480 bp

**Locus ID:** 6836

**UniProt ID:** [Q15260](#)

**Cytogenetics:** 9q34.2

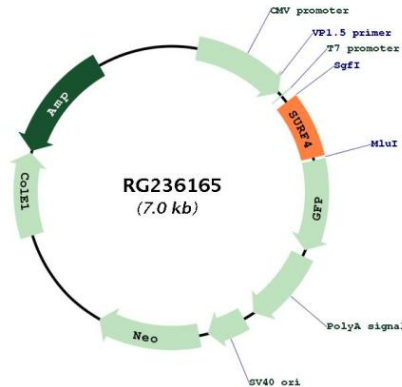
**Protein Families:** Transmembrane

**MW:** 18.4 kDa

**Gene Summary:**

This gene is located in the surfeit gene cluster, which is comprised of very tightly linked housekeeping genes that do not share sequence similarity. The encoded protein is a conserved integral membrane protein that interacts with endoplasmic reticulum-Golgi intermediate compartment proteins. Disruption of this gene results in reduced numbers of endoplasmic reticulum-Golgi intermediate compartment clusters and redistribution of coat protein I to the cytosol. Alternate splicing results in multiple transcript variants. [provided by RefSeq, Jul 2013]

**Product images:**



Circular map for RG236165