

Product datasheet for **RG236152**

SLC1A7 (NM_001287596) Human Tagged ORF Clone

Product data:

Product Type:	Expression Plasmids
Product Name:	SLC1A7 (NM_001287596) Human Tagged ORF Clone
Tag:	TurboGFP
Symbol:	SLC1A7
Synonyms:	AAAT; EAAT5
Mammalian Cell Selection:	Neomycin
Vector:	pCMV6-AC-GFP (PS100010)
E. coli Selection:	Ampicillin (100 ug/mL)
ORF Nucleotide Sequence:	>RG236152 representing NM_001287596. Blue=ORF Red=Cloning site Green=Tag(s)

```
GCTCGTTTAGTGAACCGTCAGAATTTTGTAAACGACTCACTATAGGGCGCCGGGAATTCGTCGACTG
GATCCGGTACCGAGGAGATCTGCCGCCCGCATCGCC
ATGGTGCCGCATGCCATCTTGGCACGGGGAGGGACGTGTGCAGGCGGAATGGACTCCTCATCCTGTCT
GTGCTGTCTGTCATCGTGGGCTGCCTCCTCGGCTTCTTCTTGAGGACCCGGCGCCTCTCACCACAGGAA
ATTAGTTACTTCCAGTCCCTGGAGAGCTCCTGATGAGGATGCTGAAGATGATGATCCTGCCACTGGTG
GTCTCCAGCTTGATGTCCGGACTTGCTCCCTGGATGCCAAGACCTCTAGCCGCTGGGCGTCTCACC
GTGGCGTACTACCTGTGGACCACCTTCATGGCTGTCATCGTGGGCATCTCATGGTCTCCATCATCCAC
CCAGGCAGCGCGCCAGAAGGAGACCACGGAGCAGAGTGGGAAGCCCATCATGAGCTCAGCCGATGCC
CTGTTGGACCTCATCCGGCAGAAAGAAGAAAGTTGGAGGAACGGACCAAAGGGTCTCTGGC
ACGCGTACGCGGCCGCTCGAG - GFP Tag - GTTTAAAC
```

Protein Sequence: >Peptide sequence encoded by RG236152
Blue=ORF Red=Cloning site Green=Tag(s)

```
MVPHAILARGRDVCRNGLLILSVLSVIVGCLLGGFLRTRRLSPQEISYFQFPGELLMRMLKMMILPLV
VSSLMSGLASLDAKTSSRLGVLTVAYYLWTFMAVIVGIFMVSIIHPGSAQKETTEQSGKPISSADA
LLDLIRQKEESWRNGPKGPG
TRTRPLEMESDESGLPAMEIECRITGTLNGVEFELVGGEGTPEQGRMTNKMSTKGALTFSPYLLSHV
MGYGFYHFGTYPYSGYENPFLHAINNGGYTNTRIEKYEDGGVLHVSFSYRYEAGRVIGDFKVMGTGFPED
SVIFTDKIIRSNATVEHLHPMGDNDLDGSFTRTFSLRDGGYSSVVDSHMHFKSAIHPSILQNGGPMFA
FRRVEEDHSNTELGIVEYQHAFKTPDADAGEERV
```

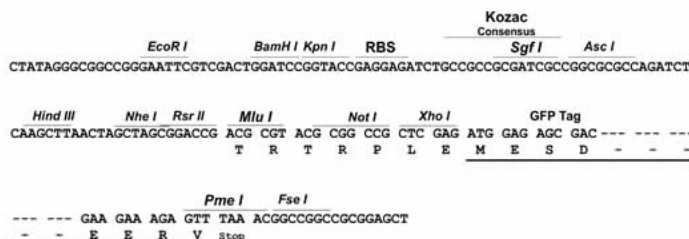
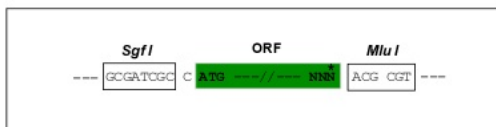
Restriction Sites: SgfI-MluI



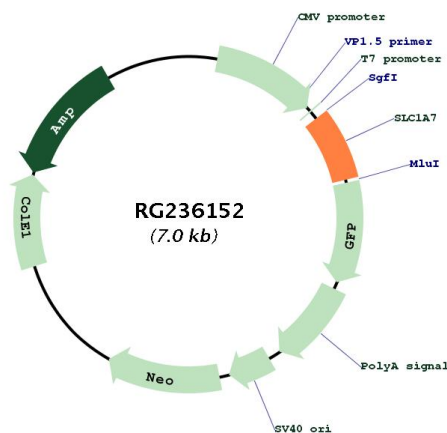
[View online »](#)

Cloning Scheme:

Cloning sites used for ORF Shutting:



Plasmid Map:



ACCN: NM_001287596

ORF Size: 474 bp

OTI Disclaimer: The molecular sequence of this clone aligns with the gene accession number as a point of reference only. However, individual transcript sequences of the same gene can differ through naturally occurring variations (e.g. polymorphisms), each with its own valid existence. This clone is substantially in agreement with the reference, but a complete review of all prevailing variants is recommended prior to use. [More info](#)

OTI Annotation: This clone was engineered to express the complete ORF with an expression tag. Expression varies depending on the nature of the gene.

Components:	The ORF clone is ion-exchange column purified and shipped in a 2D barcoded Matrix tube containing 10ug of transfection-ready, dried plasmid DNA (reconstitute with 100 ul of water).
RefSeq:	NM_001287596.2
RefSeq Size:	1335 bp
RefSeq ORF:	477 bp
Locus ID:	6512
UniProt ID:	O00341
Cytogenetics:	1p32.3
Protein Families:	Transmembrane
MW:	17.8 kDa
Gene Summary:	Transports L-glutamate; the L-glutamate uptake is sodium- and voltage-dependent and chloride-independent. Its associated chloride conductance may participate in visual processing.[UniProtKB/Swiss-Prot Function]