

## Product datasheet for **RG236126**

### ZCCHC10 (NM\_001300819) Human Tagged ORF Clone

#### Product data:

**Product Type:** Expression Plasmids  
**Product Name:** ZCCHC10 (NM\_001300819) Human Tagged ORF Clone  
**Tag:** TurboGFP  
**Symbol:** ZCCHC10  
**Mammalian Cell Selection:** Neomycin  
**Vector:** pCMV6-AC-GFP (PS100010)  
**E. coli Selection:** Ampicillin (100 ug/mL)  
**ORF Nucleotide Sequence:** >RG236126 representing NM\_001300819.  
Blue=ORF Red=Cloning site Green=Tag(s)

```
GCTCGTTTAGTGAACCGTCAGAATTTTGTAAATACGACTCACTATAGGGCGGCCGGGAATTCGTCGACTG
GATCCGGTACCGAGGAGATCTGCCGCCGCGATCGCC
ATGGCGACTCCCATGCATCGGCTAATAGCCCGGAGACAAGCTGAAGCAAATAAGCAACATGTAAGATGT
CAGAAATGCTTGGAAATTTGGACATTGGACTTATGAATGCACAGGAAAAAGAAAATACCTACATAGGCC
TCAAGGACAGCAGAACTAAAGAAAGCTTTAAAAGAAAAGAAAACAGATTATTATTGCAACAAAGGTCT
AAGAGTGAACCAAGTTCAGTAGCAGTAGCAGTGACAGTTCTGCCAGTGATTCTTCATCAGAGAGTGAA
GAAACATCTACCTCTTCTCCTCAGAGGACAGTGACACTGATGAAAGCTCCTCTAGTTCCCTCATCCTCA
GCCTCTCCACAACCTCTTCTCCTCCTGATTCAGACTCAGATCCAGCTCTTCCAGTAGCAGTAGC
ACCAGCACAGATAGCAGCTCTGACGATGAACCACCAAGAAGAAGAAAAAGAAA
ACGCGTACGCGGCCGCTCGAG - GFP Tag - GTTTAAAC
```

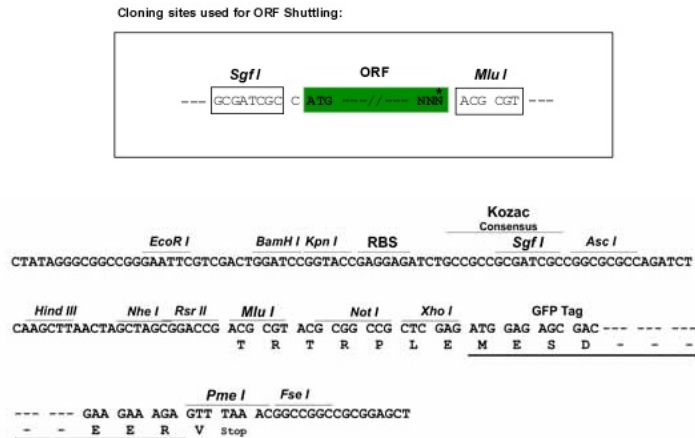
**Protein Sequence:** >Peptide sequence encoded by RG236126  
Blue=ORF Red=Cloning site Green=Tag(s)

```
MATPMHRLIARRQAEANKQHVCQKCLEFGHWYECTGKRKYLHRPSRTAELKKALKEKENRLLLQQRS
KSVTSSSSSSSDSSASDSSSESEETSTSSSESDTDESSSSSSSASSTSSSSSDSDSSSSSSSS
TSTDSSDDEPPKKKKK
TRTRPLEMESDESGLPAMEIECRITGTLNGVEFELVGGEGTPEQGRMTNKMSTKGALTFSPYLLSHV
MGYGFYHFGTYPSTYENPFLHAINNGGYNTRIEKYEDGGVLHVSFSYRYEAGRVIGDFKVMGTGFPED
SVIFTDKIIRSNTAVEHLHPMGDNDLDGSFTRTFSLRDGGYSSVVDSHMHFKSAIHPSILQNGGPMFA
FRRVEEDHSNTELGIVEYQHAFKTPDADAGEERV
```

**Restriction Sites:** SgfI-MluI



[View online »](#)

**Cloning Scheme:**


**ACCN:** NM\_001300819

**ORF Size:** 468 bp

**OTI Disclaimer:** The molecular sequence of this clone aligns with the gene accession number as a point of reference only. However, individual transcript sequences of the same gene can differ through naturally occurring variations (e.g. polymorphisms), each with its own valid existence. This clone is substantially in agreement with the reference, but a complete review of all prevailing variants is recommended prior to use. [More info](#)

**OTI Annotation:** This clone was engineered to express the complete ORF with an expression tag. Expression varies depending on the nature of the gene.

**Components:** The ORF clone is ion-exchange column purified and shipped in a 2D barcoded Matrix tube containing 10ug of transfection-ready, dried plasmid DNA (reconstitute with 100 ul of water).

**RefSeq:** [NM\\_001300819.3](#)

**RefSeq Size:** 2150 bp

**RefSeq ORF:** 471 bp

**Locus ID:** 54819

**UniProt ID:** [Q8TBK6](#)

**Cytogenetics:** 5q31.1

**MW:** 17.3 kDa

Product images:



Circular map for RG236126