

Product datasheet for **RG236086**

ZNF550 (NM_001277093) Human Tagged ORF Clone

Product data:

Product Type:	Expression Plasmids
Product Name:	ZNF550 (NM_001277093) Human Tagged ORF Clone
Tag:	TurboGFP
Symbol:	ZNF550
Mammalian Cell Selection:	Neomycin
Vector:	pCMV6-AC-GFP (PS100010)
E. coli Selection:	Ampicillin (100 ug/mL)
ORF Nucleotide Sequence:	>RG236086 representing NM_001277093. Blue=ORF Red=Cloning site Green=Tag(s)

```
GCTCGTTTAGTGAACCGTCAGAATTTTGTAAACGACTCACTATAGGGCGGCCGGGAATTCGTCGACTG
GATCCGGTACCGAGGAGATCTGCCGCCGCGATCGCC
ATGGCGGAGACGAAGGACGCAGCGCAGATGTTGGTGACCTTCAAGGATGTGGCTGTGACCTTTACCCGG
GAGGAGTGGAGACAGCTGGACCTGGCCAGAGGACCCTGTACCGAGAGGTGATGCTGGAGACCTGTGGG
CTTCTGGTTTCACTAGGGCATCGGGTCCCAAACCAGAGTTGGTCCACCTGCTAGAGCATGGGCAGGAG
CTGTGGATAGTGAAGAGAGGCCTCTCACATGCTACCTGTGCAGGTGACAGAGCACAAGTTCATACCAGA
GAGCCAACCACTTACCCGCCAGTCTTATCTGAGCGGGCCTTTCTCCGGGAAGCCTGACTCTGGAATCT
TCAACCTCAAGTGATTCGAGTTGGGGAGAGCTAGGGATGAGGAAGGGCTTTTGGAAATGCAGAAAGAA
AAACTGCTTAAGGTTGAAAAGAGAAATTAAGAAATTGC
ACGCGTACGCGGCCGCTCGAG - GFP Tag - GTTTAAAC
```

Protein Sequence:	>Peptide sequence encoded by RG236086 Blue=ORF Red=Cloning site Green=Tag(s)
-------------------	---

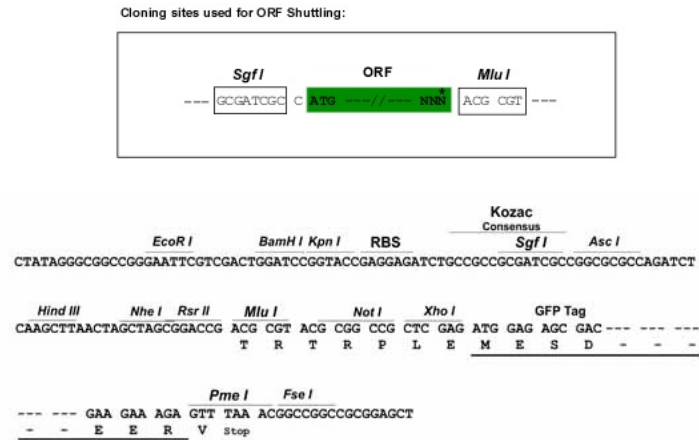
```
MAETKDAAQMLVTFKDVAVFTTREEWRQLDLAQRTLRYEVMLETCGLLVSLGHRVPKPELVHLLHGHQE
LWIVKRGLSHATCAGDRAQVHTREPTYPPVLSERAFLRGSLTLESSTSSDRLGRARDEEGLLEMQKE
KLLKVEKRNLKNC
TRTRPLEMESDESGLPAMEIECRITGTLNGVEFELVGGEGTPEQGRMTNKMSTKGALTFSPYLLSHV
MGYGFYHFGTYPSTYENPFLHAINNGGYNTRIEKYEDGGVLHVSFSYRYEAGRVIGDFKVMGTGFPED
SVIFTDKIIRSNAVEHLHPMGDNDLDGSFTRTFSLRDGGYSSVVDSHMHFKSAIHPSILQNGGPMFA
FRRVEEDHSNTELGIVEYQHAFKTPDADAGEERV
```

Restriction Sites:	Sgfl-MluI
--------------------	-----------

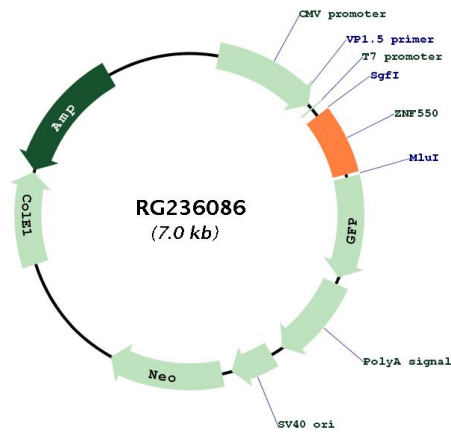


[View online »](#)

Cloning Scheme:



Plasmid Map:



ACCN: NM_001277093
 ORF Size: 453 bp
 OTI Disclaimer: The molecular sequence of this clone aligns with the gene accession number as a point of reference only. However, individual transcript sequences of the same gene can differ through naturally occurring variations (e.g. polymorphisms), each with its own valid existence. This clone is substantially in agreement with the reference, but a complete review of all prevailing variants is recommended prior to use. [More info](#)

OTI Annotation:	This clone was engineered to express the complete ORF with an expression tag. Expression varies depending on the nature of the gene.
Components:	The ORF clone is ion-exchange column purified and shipped in a 2D barcoded Matrix tube containing 10ug of transfection-ready, dried plasmid DNA (reconstitute with 100 ul of water).
RefSeq:	NM_001277093.2
RefSeq Size:	2015 bp
RefSeq ORF:	456 bp
Locus ID:	162972
UniProt ID:	Q7Z398
Cytogenetics:	19q13.43
Protein Families:	Transcription Factors
MW:	17.7 kDa
Gene Summary:	May be involved in transcriptional regulation.[UniProtKB/Swiss-Prot Function]