

Product datasheet for **RG236062**

ZNHIT3 (NM_001281432) Human Tagged ORF Clone

Product data:

Product Type: Expression Plasmids
Product Name: ZNHIT3 (NM_001281432) Human Tagged ORF Clone
Tag: TurboGFP
Symbol: ZNHIT3
Synonyms: Hit1; PEHO; TRIP3
Mammalian Cell Selection: Neomycin
Vector: pCMV6-AC-GFP (PS100010)
E. coli Selection: Ampicillin (100 ug/mL)
ORF Nucleotide Sequence: >RG236062 representing NM_001281432.
Blue=ORF Red=Cloning site Green=Tag(s)

```
GCTCGTTTAGTGAACCGTCAGAATTTTGTAAACGACTCACTATAGGGCGCCGGGAATTCGTGCGACTG
GATCCGGTACCGAGGAGATCTGCCGCCGCGATCGCC
ATGGCGTCGCTCAAATGTAGCACCGTCGCTGCGTGATCTGCTTGGAGAAGCCAAATACCGCTGTCCA
GCCTGCCGCGTGCCTACTGCTCGGTAGTCTGCTTCCGGAAGCACAAAGAACAGTGAACCTGAAACT
CGTCTGTTGAGAAAAAATAAGATCAGCTCTTCTACCAAACCGTAAAGCCTGTGAAAAAACAAGAT
GATGATGACTCTATAGCTGATTTTCTCAATAGTGATGAGGAAGAAGACAGAGTTTCTTTCAGAAATTTA
AAGAATTTAGATGGACTCTCGTCTGTCAACCCAGGCTGGAGTGCAGCGGCGCAATCTCGGCTCACTGCA
ACCTCTCCCTCCCAGATTCAAGCAATTCTCATGCCTCAGCCTCCCGAGCAGCTGGGACTACAGGCGCCT
GCCACTACGCCCAACCAATTTTGTATTTT
ACGCGTACGCGGCCGCTCGAG - GFP Tag - GTTTAAAC
```

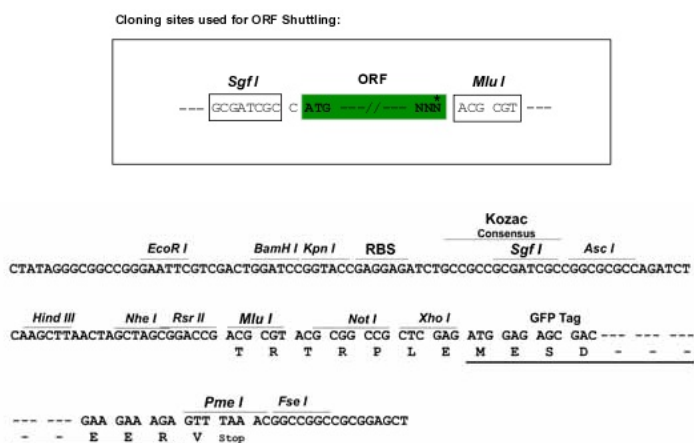
Protein Sequence: >Peptide sequence encoded by RG236062
Blue=ORF Red=Cloning site Green=Tag(s)

```
MASLKCSTVVCVICLEKPKYRCPACRVPYCSVVCFRKHKEQCNPETRPVEKKIRSALPTKTKPVENKD
DDDSIADFLNSDEEEDRVSLLQNLKNDGLSSCHPGWSAAAQSRLLATSPSQIQAILMPQPPEQLGLQAP
ATTPNQFLYF
TRTRPLEMESDESGLPAMEIECRITGTLNGVEFELVGGEGTPEQGRMTNKMSTKGALTFSPYLLSHV
MGYGFYHFGTYPYSGYENPFLHAINNGGYNTRIEKYEDGGVLHVSFSYRYEAGRVIGDFKVMGTGFPED
SVIFTDKIIRSNATVEHLHPMGDNDLDGSFTRTFSLRDGGYSSVVDSDSHMHFSAIHPSILQNGGPMFA
FRRVEEDHSNTELGIVEYQHAFKTPDADAGEERV
```

Restriction Sites: SgfI-MluI

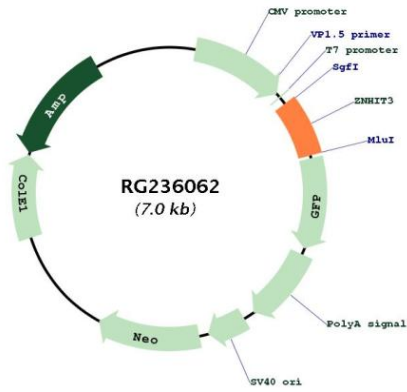


[View online »](#)

Cloning Scheme:


- ACCN:** NM_001281432
- ORF Size:** 444 bp
- OTI Disclaimer:** The molecular sequence of this clone aligns with the gene accession number as a point of reference only. However, individual transcript sequences of the same gene can differ through naturally occurring variations (e.g. polymorphisms), each with its own valid existence. This clone is substantially in agreement with the reference, but a complete review of all prevailing variants is recommended prior to use. [More info](#)
- OTI Annotation:** This clone was engineered to express the complete ORF with an expression tag. Expression varies depending on the nature of the gene.
- Components:** The ORF clone is ion-exchange column purified and shipped in a 2D barcoded Matrix tube containing 10ug of transfection-ready, dried plasmid DNA (reconstitute with 100 ul of water).
- RefSeq:** [NM_001281432.2](#)
- RefSeq Size:** 2064 bp
- RefSeq ORF:** 447 bp
- Locus ID:** 9326
- UniProt ID:** [Q15649](#)
- Cytogenetics:** 17q12
- Protein Families:** Druggable Genome, Transcription Factors
- MW:** 16.9 kDa

Product images:



Circular map for RG236062