

## Product datasheet for **RG236061**

### MAGP2 (MFAP5) (NM\_001297711) Human Tagged ORF Clone

#### Product data:

**Product Type:** Expression Plasmids  
**Product Name:** MAGP2 (MFAP5) (NM\_001297711) Human Tagged ORF Clone  
**Tag:** TurboGFP  
**Symbol:** MAGP2  
**Synonyms:** AAT9; MAGP-2; MAGP2; MFAP-5; MP25  
**Mammalian Cell Selection:** Neomycin  
**Vector:** pCMV6-AC-GFP (PS100010)  
**E. coli Selection:** Ampicillin (100 ug/mL)  
**ORF Nucleotide Sequence:** >RG236061 representing NM\_001297711.  
Blue=ORF Red=Cloning site Green=Tag(s)

```
GCTCGTTTGTAGTGAACCGTCAGAATTTGTAAACGACTACTATAGGGCGCCGGGAATTCGTCGACTG
GATCCGGTACCGAGGAGATCTGCCGCCGCGATCGCC
ATGTGCGCTCTGGGACCAAGGTGCTGCTTTCTTGCTGCATTCATCACCTCTGACTGGATACCC
CTGGGGTCAATAGTCAACGAGGAGACGATGTGACTCAAGCGACTCCAGAAACATTCACAGAAGATCCT
AATCTGGTGAATGATCCCGCTACAGATGAAACAGAGTGTGGGATGAGAAATTTACCTGCACAAGGCTC
TACTCTGTGCATCGCCGGTTAAACAATGCATTCATCAGTTATGCTTCACCAGTTTACGACGTATGTAC
ATCGTCAACAAGGAGATCTGCTCTGCTTGTCTGTAAGGAACACGAAGCTATGAAAGATGAGCTTTGC
CGTCAGATGGCTGGTCTGCCCCCTAGGAGACTCCGTCGCTCCAATTACTCCGACTTCTCCCTGTGAA
AATGTGGATTTGCAGAGACCCAATGGTCTG
ACGCGTACGCGGCCGCTCGAG - GFP Tag - GTTTAAAC
```

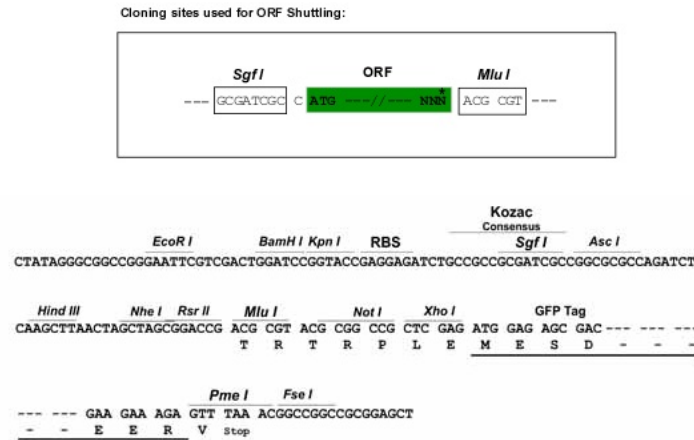
**Protein Sequence:** >Peptide sequence encoded by RG236061  
Blue=ORF Red=Cloning site Green=Tag(s)

```
MSLLGPKVLLFLAAFIIITSDWIPLGVNSQRDDVTQATPETFTEDPNLVNDPATDETECWDEKFTCTRL
YSVHRPVKQCIHQLCFTSLRRMYIVNKEICSRSLVCKEHEAMKDELCRQMAGLPPRRLRRSNYFRLPPCE
NVDLQRPNGL
TRTRPLEMESDESGLPAMEIECRITGTLNGVEFELVGGEGTPEQGRMTNKMSTKGALTFSPYLLSHV
MGYGFYHFGTYPSTYENPFLHAINNGGYNTRIEKYEDGGVLHVSFSYRYEAGRVIGDFKVMGTGFPED
SVIFTDKIIIRSNATVEHLHPMGDNDLDGSFTRTFSLRDGGYSSVVDSSHMHFKSAIHPSILQNGGPMFA
FRRVEEDHSNTELGIVEYQHAFKTPDADAGEERV
```

**Restriction Sites:** SgfI-MluI



[View online »](#)

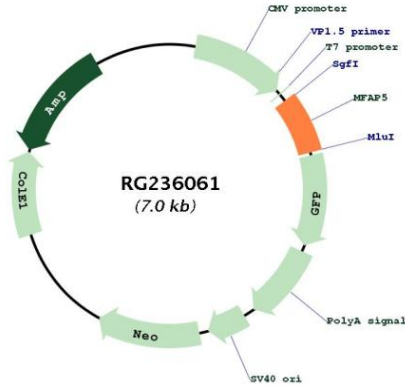
**Cloning Scheme:**


- ACCN:** NM\_001297711
- ORF Size:** 444 bp
- OTI Disclaimer:** The molecular sequence of this clone aligns with the gene accession number as a point of reference only. However, individual transcript sequences of the same gene can differ through naturally occurring variations (e.g. polymorphisms), each with its own valid existence. This clone is substantially in agreement with the reference, but a complete review of all prevailing variants is recommended prior to use. [More info](#)
- OTI Annotation:** This clone was engineered to express the complete ORF with an expression tag. Expression varies depending on the nature of the gene.
- Components:** The ORF clone is ion-exchange column purified and shipped in a 2D barcoded Matrix tube containing 10ug of transfection-ready, dried plasmid DNA (reconstitute with 100 ul of water).
- RefSeq:** [NM\\_001297711.2](#)
- RefSeq Size:** 2874 bp
- RefSeq ORF:** 447 bp
- Locus ID:** 8076
- Cytogenetics:** 12p13.31
- Protein Families:** Secreted Protein
- MW:** 17.6 kDa

**Gene Summary:**

This gene encodes a 25-kD microfibril-associated glycoprotein which is a component of microfibrils of the extracellular matrix. The encoded protein promotes attachment of cells to microfibrils via alpha-V-beta-3 integrin. Deficiency of this gene in mice results in neutropenia. Alternate splicing results in multiple transcript variants encoding different isoforms. [provided by RefSeq, Jul 2014]

**Product images:**



Circular map for RG236061