

## Product datasheet for **RG236053**

### CEBP Beta (CEBPB) (NM\_001285879) Human Tagged ORF Clone

#### Product data:

**Product Type:** Expression Plasmids  
**Product Name:** CEBP Beta (CEBPB) (NM\_001285879) Human Tagged ORF Clone  
**Tag:** TurboGFP  
**Symbol:** CEBPB  
**Synonyms:** C/EBP-beta; IL6DBP; NF-IL6; TCF5  
**Mammalian Cell Selection:** Neomycin  
**Vector:** pCMV6-AC-GFP (PS100010)  
**E. coli Selection:** Ampicillin (100 ug/mL)  
**ORF Nucleotide Sequence:** >RG236053 representing NM\_001285879.  
Blue=ORF Red=Cloning site Green=Tag(s)

```
GCTCGTTTAGTGAACCGTCAGAATTTGTAAACGACTACTATAGGGCGCCGGGAATTCGTCGACTG
GATCCGGTACCGAGGAGATCTGCCGCCGCGATCGCC
ATGGCGGCGGGCTTCCCGTACGCGCTGCGCGCTTACCTCGGTACCAGGCGGTGCCGAGCGGCAGCAGC
GGGAGCCTCTCCACGTCTCCTCGTCCAGCCCGCCGGCAGCCGAGCCCGCTGACGCCAAGGCGCCC
CCGACCGCTGTACGCGGGGGCCGCGCCGGCCCTCGCAGGTCAAGAGCAAGGCCAAGAAGACCGTG
GACAAGCACAGCGACGAGTACAAGATCCGGCGCGAGCGCAACAACATCGCCGTGCGCAAGAGCCGCGAC
AAGGCCAAGATGCGCAACCTGGAGACGCAGCACAAGTCTTGGAGCTCACGGCCGAGAACGAGCGGCTG
CAGAAGAAGTGGAGCAGCTGTGCGCGAGCTCAGCACCTGCGGAATTGTTCAAGCAGCTGCCCGAG
CCCTGCTCGCCTCCTCCGGCCACTGC
ACGCGTACGCGGCCGCTCGAG - GFP Tag - GTTTAAAC
```

**Protein Sequence:** >Peptide sequence encoded by RG236053  
Blue=ORF Red=Cloning site Green=Tag(s)

```
MAAGFPYALRAYLGYQAVPSGSSGSLSTSSSSPPGTPSPADAKAPPTACYAGAAPAPSQVSKAKKTV
DKHSDEYKIRRERNNIIVRKS RDKAKMRNLETQHKVLELTAENERLQKKVEQLSRELSTLRNLFKQLPE
PLLASSGHC
TRTRPLEMESDESGLPAMEIECRITGTLNGVEFELVGGEGTPEQGRMTNKMSTKGALTFSPYLLSHV
MGYGFYHFGTYPYSGYENPFLHAINNGGYNTRIEKYEDGGVLHVSFSYRYEAGRVIGDFKVMGTGFPED
SVIFTDKIIRSNATVEHLHPMGDNDLDGSFTRTFSLRDGGYSSVVDSDSHMHFSAIHPSILQNGGPMFA
FRRVEEDHSNTELGIVEYQHAFKTPDADAGEERV
```

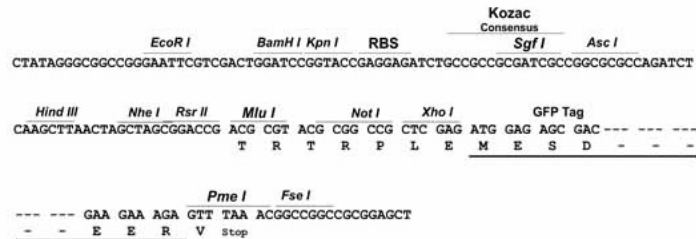
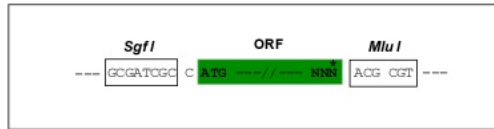
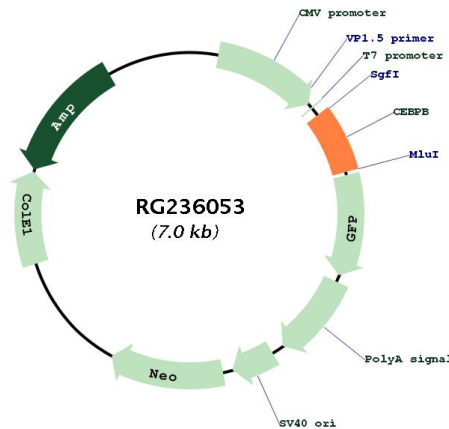
**Restriction Sites:** SgfI-MluI



[View online »](#)

**Cloning Scheme:**

Cloning sites used for ORF Shutting:


**Plasmid Map:**

**ACCN:** NM\_001285879

**ORF Size:** 441 bp

**OTI Disclaimer:** The molecular sequence of this clone aligns with the gene accession number as a point of reference only. However, individual transcript sequences of the same gene can differ through naturally occurring variations (e.g. polymorphisms), each with its own valid existence. This clone is substantially in agreement with the reference, but a complete review of all prevailing variants is recommended prior to use. [More info](#)

**OTI Annotation:** This clone was engineered to express the complete ORF with an expression tag. Expression varies depending on the nature of the gene.

<b>Components:</b>	The ORF clone is ion-exchange column purified and shipped in a 2D barcoded Matrix tube containing 10ug of transfection-ready, dried plasmid DNA (reconstitute with 100 ul of water).
<b>RefSeq:</b>	<a href="#">NM_001285879.1</a> , <a href="#">NP_001272808.1</a>
<b>RefSeq Size:</b>	2113 bp
<b>RefSeq ORF:</b>	444 bp
<b>Locus ID:</b>	1051
<b>UniProt ID:</b>	<a href="#">P17676</a>
<b>Cytogenetics:</b>	20q13.13
<b>Protein Families:</b>	Druggable Genome, ES Cell Differentiation/IPS, Transcription Factors
<b>MW:</b>	16.4 kDa
<b>Gene Summary:</b>	This intronless gene encodes a transcription factor that contains a basic leucine zipper (bZIP) domain. The encoded protein functions as a homodimer but can also form heterodimers with CCAAT/enhancer-binding proteins alpha, delta, and gamma. Activity of this protein is important in the regulation of genes involved in immune and inflammatory responses, among other processes. The use of alternative in-frame AUG start codons results in multiple protein isoforms, each with distinct biological functions. [provided by RefSeq, Oct 2013]