

Product datasheet for **RG236035**

RBM7 (NM_001286047) Human Tagged ORF Clone

Product data:

Product Type: Expression Plasmids
Product Name: RBM7 (NM_001286047) Human Tagged ORF Clone
Tag: TurboGFP
Symbol: RBM7
Mammalian Cell Selection: Neomycin
Vector: pCMV6-AC-GFP (PS100010)
E. coli Selection: Ampicillin (100 ug/mL)
ORF Nucleotide Sequence: >RG236035 representing NM_001286047.
 Blue=ORF Red=Cloning site Green=Tag(s)

```
GCTCGTTTAGTGAACCGTCAGAATTTTGTAAACGACTCACTATAGGGCGGCCGGGAATTCGTCGACTG
GATCCGGTACCGAGGAGATCTGCCGCCGCGATCGCC
ATGGATAACATGACTTCATCAGCACAGATAATTCAGAGATCTTTCTCTTCCAGAAAATTTTCAGAGA
CAAGCAGTGATGAACAGTGCTTTGAGACAAATGTCATATGGTGGAAAATTTGGTTCTTCACTCTGGAT
CAATCAGGATTTTACCATCAGTTCAATCACACAGTCATAGTTTCAATCAGTCTTCAAGCTCCAGTGG
CGCCAAGGTACACCATCATCACAGCGTAAAGTCAGAATGAATTCCTATCCCTACCTAGCAGATAGACAT
TATAGCCGGGAACAGCGTTACACTGATCATGGTCTGACCATCATTACAGAGGAAAGAGAGATGATTC
TTCTATGAAGACAGGAATCATGATGACTGGAGCCATGACTATGATAACAGAAGAGACAGTAGTAGAGAT
GGAAAATGGCGCTCATCTCGACAC
ACGCGTACGCGGCCGCTCGAG - GFP Tag - GTTTAAAC
```

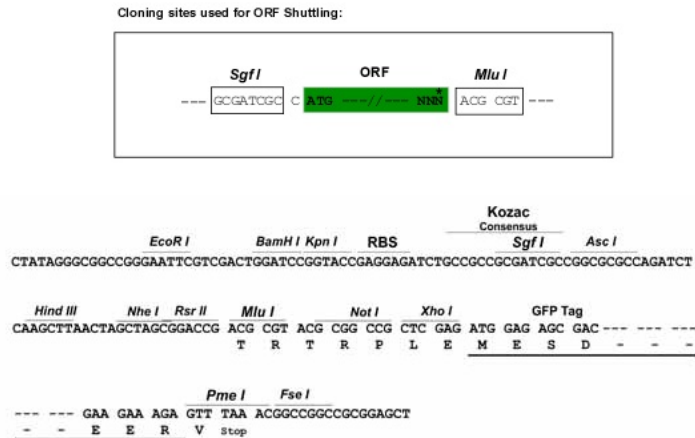
Protein Sequence: >Peptide sequence encoded by RG236035
 Blue=ORF Red=Cloning site Green=Tag(s)

```
MDNMTSSAQIIQRSFSSPENFQRQAVMNSALRQMSYGGKFGSSPLDQSGFSPSVQSHSHSNQSSSSQW
RQGTPTSSQRKVRMNSYPYLADRHYSREQRYTDHGSDDHYRGRDFFYEDRNHDDWSHDYDNRDSSRD
GKWRSSRH
TRTRPLEMESDESGLPAMEIECRITGTLNGVEFELVGGEGTPEQGRMTNKMSTKGALTFSPYLLSHV
MGYGFYHFGTYPSTYENPFLHAINNGGYNTRIEKYEDGGVLHVSFSYRYEAGRVIGDFKVMGTGFPED
SVIFTDKIIRSNTAVEHLHPMGDNDLDGSFTRTFSLRDGGYSSVVDSHMHFKSAIHPSILQNGGPMFA
FRRVEEDHSNTELGIVEYQHAFKTPDADAGEERV
```

Restriction Sites: SgfI-MluI



[View online »](#)

Cloning Scheme:


ACCN: NM_001286047

ORF Size: 438 bp

OTI Disclaimer: The molecular sequence of this clone aligns with the gene accession number as a point of reference only. However, individual transcript sequences of the same gene can differ through naturally occurring variations (e.g. polymorphisms), each with its own valid existence. This clone is substantially in agreement with the reference, but a complete review of all prevailing variants is recommended prior to use. [More info](#)

OTI Annotation: This clone was engineered to express the complete ORF with an expression tag. Expression varies depending on the nature of the gene.

Components: The ORF clone is ion-exchange column purified and shipped in a 2D barcoded Matrix tube containing 10ug of transfection-ready, dried plasmid DNA (reconstitute with 100 ul of water).

RefSeq: [NM_001286047.2](#)

RefSeq Size: 3587 bp

RefSeq ORF: 441 bp

Locus ID: 10179

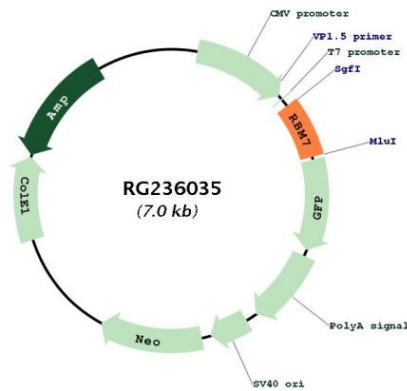
UniProt ID: [Q9Y580](#)

Cytogenetics: 11q23.2

MW: 17.7 kDa

Gene Summary:

Subunit of the trimeric nuclear exosome targeting (NEXT) complex, a complex that directs a subset of non-coding short-lived RNAs for exosomal degradation. The RNA exosome is fundamental for the degradation of RNA in eukaryotic nuclei. Substrate targeting is facilitated by its cofactor MTREX, which links to RNA-binding protein adapters (PubMed:27871484). Possible involved in germ cell RNA processing and meiosis (Probable).[UniProtKB/Swiss-Prot Function]

Product images:


Circular map for RG236035