

Product datasheet for **RG236028**

METTL11A (NTMT1) (NM_001286800) Human Tagged ORF Clone

Product data:

Product Type: Expression Plasmids
Product Name: METTL11A (NTMT1) (NM_001286800) Human Tagged ORF Clone
Tag: TurboGFP
Symbol: NTMT1
Synonyms: AD-003; C9orf32; HOMT1A; METTL11A; NRMT; NRMT1; NTM1A
Mammalian Cell Selection: Neomycin
Vector: pCMV6-AC-GFP (PS100010)
E. coli Selection: Ampicillin (100 ug/mL)
ORF Nucleotide Sequence: >RG236028 representing NM_001286800.
 Blue=ORF Red=Cloning site Green=Tag(s)

```
GCTCGTTTAGTGAACCGTCAGAATTTGTAAACGACTCACTATAGGGCGCCGGGAATTCGTCGACTG
GATCCGGTACCGAGGAGATCTGCCGCCGCGATCGCC
ATGACGAGCGAGGTGATAGAAGACGAGAAGCAATTCTATCCAAGGCCAAGACCTACTGGAACAAATC
CCACCCACGGTGGACGGCATGCTGGGGGGTATGGCCACATCTCCAGCATCGACATCAACAGCTCCCGG
AAGTTTCTGCAGAGGTTTTGAGGGAAGGCCCAACAAGACAGGAACGTCTGTGCCCTGGACTGTGGA
GCTGGCATTGGGAGGATACCAAGCGGCTGCTCCTGCCGCTGTTTCAGAGAGGTGGATATGGTCGACATA
ACGGAGGACTTCCTGGTCAAGCCAAGACCTACCTGGGGAGGAGGGCAAGAGGGCCACCTACCGATC
AGCACCTGGCCGAGTTCCTGCGGCGCTGCAAGGGCAGCCTCCGCCCAACGGCATCATCGTCATCAAAG
ACAACATGGCCAGGAGGGCG
ACGCGTACGCGGCCGCTCGAG - GFP Tag - GTTTAAAC
```

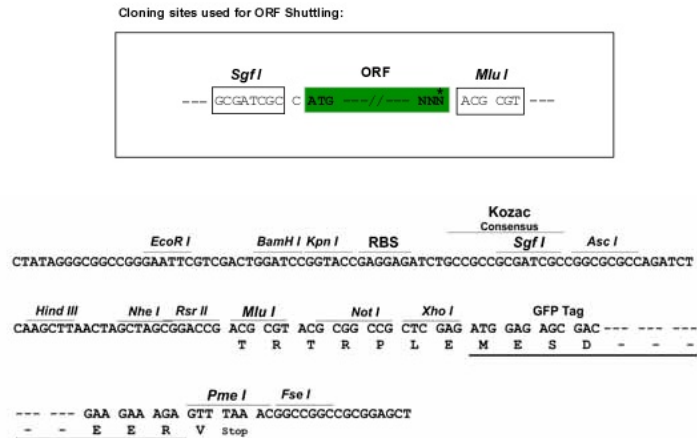
Protein Sequence: >Peptide sequence encoded by RG236028
 Blue=ORF Red=Cloning site Green=Tag(s)

```
MTSEVIEDEKQFYSAKTYWKQIPPTVDGMLGGYGHISSIDINSSRKFLQRFLREGPNKGTSCALDCG
AGIGRITKRLLLPLFREVDMDITDFLVQAKTYLGEEGRATSPISWSSCGAARAASAPTASSSK
TTWPRRA
TRTRPLEMESDESGLPAMEIECRITGTLNGVEFELVGGEGTPEQGRMTNKMSTKGALTFSPYLLSHV
MGYGFYHFGTYPYSGYENPFLHAINNGGYNTRIEKYEDGGVLHVSFSYRYEAGRVIGDFKVMGTGFPED
SVIFTDKIIRSNATVEHLHPMGDNDLDGSFTRTFSLRDGGYSSVVDSDHMFKSAIHPSILQNGGPMFA
FRRVEEDHSNTELGIVEYQHAFKTPDADAGEERV
```

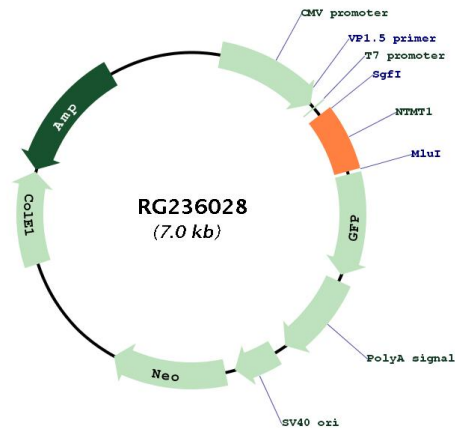
Restriction Sites: SgfI-MluI



Cloning Scheme:



Plasmid Map:



ACCN: NM_001286800

ORF Size: 435 bp

OTI Disclaimer: The molecular sequence of this clone aligns with the gene accession number as a point of reference only. However, individual transcript sequences of the same gene can differ through naturally occurring variations (e.g. polymorphisms), each with its own valid existence. This clone is substantially in agreement with the reference, but a complete review of all prevailing variants is recommended prior to use. [More info](#)

OTI Annotation: This clone was engineered to express the complete ORF with an expression tag. Expression varies depending on the nature of the gene.

Components:	The ORF clone is ion-exchange column purified and shipped in a 2D barcoded Matrix tube containing 10ug of transfection-ready, dried plasmid DNA (reconstitute with 100 ul of water).
RefSeq:	NM_001286800.1 , NP_001273729.1
RefSeq Size:	1451 bp
RefSeq ORF:	438 bp
Locus ID:	28989
UniProt ID:	Q9BV86
Cytogenetics:	9q34.11
Protein Families:	Druggable Genome
MW:	16.3 kDa
Gene Summary:	The METTL11A gene encodes an N-terminal methyltransferase for the RAN (MIM 601179) guanine nucleotide exchange factor regulator of chromosome condensation 1 (RCC1; MIM 179710). METTL11A enzyme alpha-N-methylates other protein targets such as SET (MIM 600960) and RB (MIM 180200).[supplied by OMIM, Nov 2010]