

Product datasheet for **RG235971**

CCDC90B (NM_001286120) Human Tagged ORF Clone

Product data:

Product Type: Expression Plasmids
Product Name: CCDC90B (NM_001286120) Human Tagged ORF Clone
Tag: TurboGFP
Symbol: CCDC90B
Synonyms: MDS011; MDS025
Mammalian Cell Selection: Neomycin
Vector: pCMV6-AC-GFP (PS100010)
E. coli Selection: Ampicillin (100 ug/mL)
ORF Nucleotide Sequence: >RG235971 representing NM_001286120.
Blue=ORF Red=Cloning site Green=Tag(s)

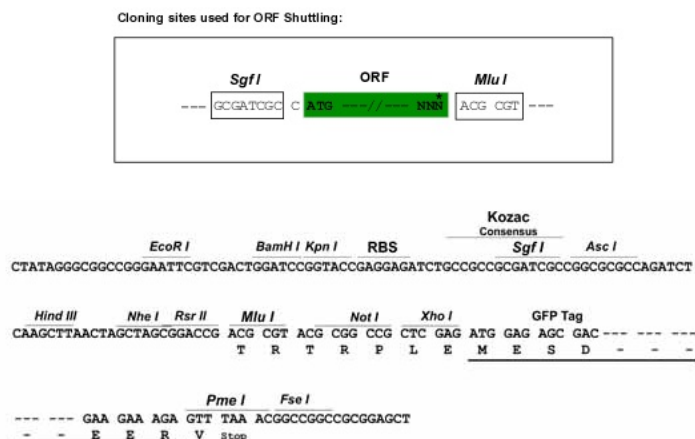
```
GCTCGTTTAGTGAACCGTCAGAATTTGTAAACGACTACTATAGGGCGCCGGGAATTCGTCGACTG
GATCCGGTACCGAGGAGATCTGCCGCCGCGATCGCC
ATGGCTCATTTGGATGCTATCAGGAAAGACATGGTCATCCTAGAGAAAAGTGAATTTGCAAACTGAGA
GCAGAGAATGAGAAAATGAAAATTGAATTAGACCAAGTTAAGCAACAATAATGCATGAAACCAGTCGA
ATCAGAGCAGATAATAAACTGGATATCAACTTAGAAAGGAGCAGAGTAACAGATATGTTTACAGATCAA
GAAAAGCAACTTATGGAAACAACACAGAATTTACAAAAAGGATACTCAAACAAAAGTATTATTCA
GAGACCAGTAATAAAATTGACGCTGAAATTGCTTCCTTAAAAACTGATGGAATCTAACAACTTGAG
ACAATTCGTTATCTTGCAGCTTCGGTGTACTTGCCTGGCAATAGCATTGGGATTTATAGATTCTGG
AAG
ACGCGTACGCGGCCGCTCGAG - GFP Tag - GTTTAAAC
```

Protein Sequence: >Peptide sequence encoded by RG235971
Blue=ORF Red=Cloning site Green=Tag(s)

```
MAHLDAIRKDMVILEKSEFANLRAENEKMKIELDQVKQQLMHETSRRIRADNKLDINLERSRVTDMFTDQ
EKQLMETTTEFTKKDTQTKSIISETSNKIDAEIASLKLTMESNKLETIRYLAASVFTCLAIALGFYRFW
K
TRTRPLEMESDESGLPAMEIECRITGTLNGVEFELVGGEGTPEQGRMTNKMSTKGALTFSPYLLSHV
MGYGFYHFGTYPSTYENPFLHAINNGGYNTRIEKYEDGGVLHVSFSYRYEAGRVIGDFKVMGTGFPED
SVIFTDKIIRSNATVEHLHPMGDNDLDGSFTRTFSLRDGGYSSVVDSDSHMHFKSAIHPISILQNGGPMFA
FRRVEEDHSNTELGIVEYQHAFKTPDADAGEERV
```

Restriction Sites: SgfI-MluI



Cloning Scheme:


ACCN:	NM_001286120
ORF Size:	417 bp
OTI Disclaimer:	The molecular sequence of this clone aligns with the gene accession number as a point of reference only. However, individual transcript sequences of the same gene can differ through naturally occurring variations (e.g. polymorphisms), each with its own valid existence. This clone is substantially in agreement with the reference, but a complete review of all prevailing variants is recommended prior to use. More info
OTI Annotation:	This clone was engineered to express the complete ORF with an expression tag. Expression varies depending on the nature of the gene.
Components:	The ORF clone is ion-exchange column purified and shipped in a 2D barcoded Matrix tube containing 10ug of transfection-ready, dried plasmid DNA (reconstitute with 100 ul of water).
RefSeq:	NM_001286120.1 , NP_001273049.1
RefSeq Size:	3794 bp
RefSeq ORF:	420 bp
Locus ID:	60492
UniProt ID:	Q9GZT6
Cytogenetics:	11q14.1
Protein Families:	Transmembrane
MW:	16.7 kDa

Product images:



Circular map for RG235971