

Product datasheet for **RG235917**

UBE2C (NM_001281741) Human Tagged ORF Clone

Product data:

Product Type:	Expression Plasmids
Product Name:	UBE2C (NM_001281741) Human Tagged ORF Clone
Tag:	TurboGFP
Symbol:	UBE2C
Synonyms:	dj447F3.2; UBCH10
Mammalian Cell Selection:	Neomycin
Vector:	pCMV6-AC-GFP (PS100010)
E. coli Selection:	Ampicillin (100 ug/mL)
ORF Nucleotide Sequence:	>RG235917 representing NM_001281741. Blue=ORF Red=Cloning site Green=Tag(s)

```
GCTCGTTTAGTGAACCGTCAGAATTTGTAAACGACTACTATAGGGCCGCCGGGAATTCGTCGACTG
GATCCGGTACCGAGGAGATCTGCCGCCGCGATCGCC
ATGGCTTCCAAAACCGCGACCCAGCCGCTAGCGTCGCCGCCCGCCGTAAGGAGCTGAGCCGAGC
GGGGGCGCCCGGGTCCGGTGGGCAAAGGCTACAGCAGGAGCTGATGACCCTCATGGCAGTGGGG
AGCATCAGAACCGCTCAACAGTTTGTCTACTGTCCGGTCCCAGAGAACTCAAGATTCTAGCAAGCCC
CTTGTGTGGGCTTGGTGGGACATGAGGCTGCTGCTGGAGCTTACTCTGCAACTGTTTCTCAAATG
CCAGAACCAACATTGATAGTCCCTTGAACACACATGCTGCCGAGCTCTGAAAAACCCACAGCTTTT
AAGAAGTACCTGCAAGAACTACTCAAAGCAGGTCACCAGCCAGGAGCCC
ACGCGTACGCGGCCGCTCGAG - GFP Tag - GTTTAAAC
```

Protein Sequence: >Peptide sequence encoded by RG235917
Blue=ORF Red=Cloning site Green=Tag(s)

```
MASQNRDPAATSVAARKGAEPSSGAARGPVGKRLQQLMTLMAVGSIRTSSTVCLLSGPRETQDSSKP
LVWGLGWDMLLLELTLQLFLQMPEPNIDSPLNTHAAELWKNPTAFKKYLQETYSKQVTSQEP
TRTRPLEMESDESGLPAMEIECRITGTLNGVEFELVGGGEGTPEQGRMTNKMSTKGALTFSPYLLSHV
MGYGFYHFGTYPSGYENPFLHAINNGGYNTRIEKYEDGGVLHVSFSYRYEAGRVIGDFKVMGTGFPED
SVIFTDKIIRSNAIVEHLHPMGDNDLDGSFTRTFSLRDGGYSSVVDSMHFKSAIHPSILQNGGPMFA
FRRVEEDHSNTELGIVEYQHAFKTPDADAGEERV
```

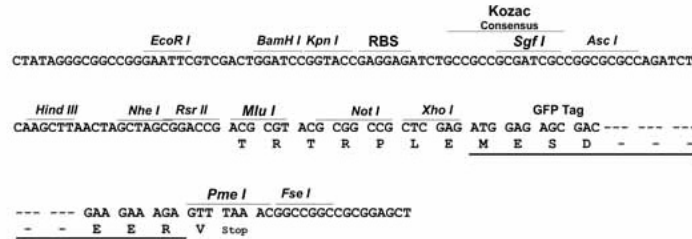
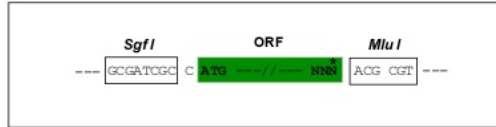
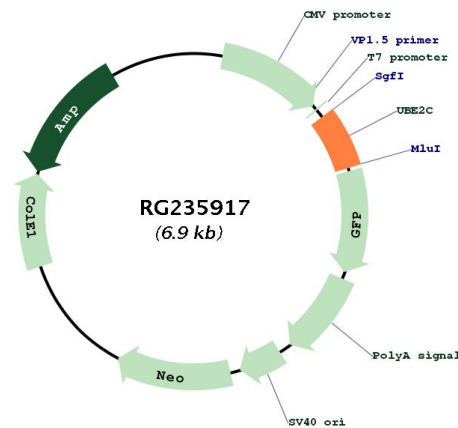
Restriction Sites: Sgfl-MluI



[View online »](#)

Cloning Scheme:

Cloning sites used for ORF Shutting:


Plasmid Map:

ACCN: NM_001281741

ORF Size: 396 bp

OTI Disclaimer: The molecular sequence of this clone aligns with the gene accession number as a point of reference only. However, individual transcript sequences of the same gene can differ through naturally occurring variations (e.g. polymorphisms), each with its own valid existence. This clone is substantially in agreement with the reference, but a complete review of all prevailing variants is recommended prior to use. [More info](#)

OTI Annotation:	This clone was engineered to express the complete ORF with an expression tag. Expression varies depending on the nature of the gene.
Components:	The ORF clone is ion-exchange column purified and shipped in a 2D barcoded Matrix tube containing 10ug of transfection-ready, dried plasmid DNA (reconstitute with 100 ul of water).
RefSeq:	NM_001281741.1 , NP_001268670.1
RefSeq Size:	723 bp
RefSeq ORF:	399 bp
Locus ID:	11065
UniProt ID:	O00762
Cytogenetics:	20q13.12
Protein Families:	Druggable Genome
Protein Pathways:	Ubiquitin mediated proteolysis
MW:	14.8 kDa
Gene Summary:	The modification of proteins with ubiquitin is an important cellular mechanism for targeting abnormal or short-lived proteins for degradation. Ubiquitination involves at least three classes of enzymes: ubiquitin-activating enzymes, ubiquitin-conjugating enzymes, and ubiquitin-protein ligases. This gene encodes a member of the E2 ubiquitin-conjugating enzyme family. The encoded protein is required for the destruction of mitotic cyclins and for cell cycle progression, and may be involved in cancer progression. Multiple transcript variants encoding different isoforms have been found for this gene. Pseudogenes of this gene have been defined on chromosomes 4, 14, 15, 18, and 19. [provided by RefSeq, Aug 2013]