

Product datasheet for **RG235906**

FAM107B (NM_001282697) Human Tagged ORF Clone

Product data:

Product Type:	Expression Plasmids
Product Name:	FAM107B (NM_001282697) Human Tagged ORF Clone
Tag:	TurboGFP
Symbol:	FAM107B
Synonyms:	C10orf45; HITS
Mammalian Cell Selection:	Neomycin
Vector:	pCMV6-AC-GFP (PS100010)
E. coli Selection:	Ampicillin (100 ug/mL)
ORF Nucleotide Sequence:	>RG235906 representing NM_001282697. Blue=ORF Red=Cloning site Green=Tag(s)

```
GCTCGTTTAGTGAACCGTCAGAATTTGTAAACGACTACTATAGGGCCGCCGGGAATTCGTCGACTG
GATCCGGTACCGAGGAGATCTGCCGCCCGCATCGCC
ATGGCCGAGCCAGACTACATAGAAGATGACAATCCTGAACTCATTAGGCCTCAGAACTGATCAATCCT
GTAAAAACCTCCCGAACCATCAAGATCTTACAGAGAACTTCTTATGAATCAAAAAAGGGTCTTGCT
CCTCAGAACAAACCAGAATTGCAGAAGGTGATGGAAAAAGAAAACGAGACCAAGTAATAAAGCAGAAG
GAAGAAGAAGCACAGAAGAAGAAATCTGACTTGGAAATAGAGCTATTAACGGCAGCAGAAGTTGGAG
CAGCTTGAAGTGAAGAAGCAGAAATGCAAGAAGCAAGAAAATGCCCCGAGTTGTGAAGGTGAAA
GGCAATCTCAGGAGAACAGGCCAAGAAGTCGCCAAGCCAGGAGTCC
ACGCGTACGCGGCCGCTCGAG - GFP Tag - GTTTAAAC
```

Protein Sequence:	>Peptide sequence encoded by RG235906 Blue=ORF Red=Cloning site Green=Tag(s)
-------------------	---

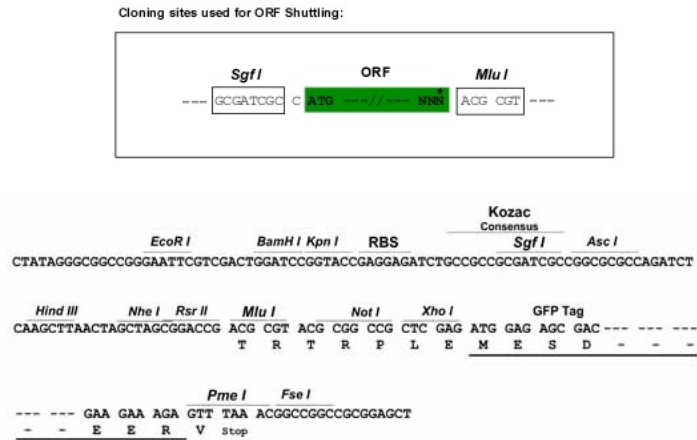
```
MAEPDYIEDNPQLIRPQKLINPVKTSRNHQDLHRELLMNQKRLAPQNKPELQKVMKRRDQVIKQK
EEEAQKKKSDLEIELLKRQKLELELEKQKLEEEQENAPEFVKVGNLRRTGQEVAAQES
TRTRPLEMESDESGLPAMEIECRITGTLNGVEFELVGGEGTPEQGRMTNKMSTKGALTFSPYLLSHV
MGYGFYHFGTYPSGYENPFLHAINNGGYNTRIEKYEDGGVLHVSFSYRYEAGRVIGDFKVMGTGFPED
SVIFTDKIIRSNAIVEHLHPMGDNDLDGSFTRTFSLRDGGYSSVVDSMHFKSAIHPSILQNGGPMFA
FRRVEEDHSNTELGIVEYQHAFKTPDADAGEERV
```

Restriction Sites:	Sgfl-MluI
--------------------	-----------

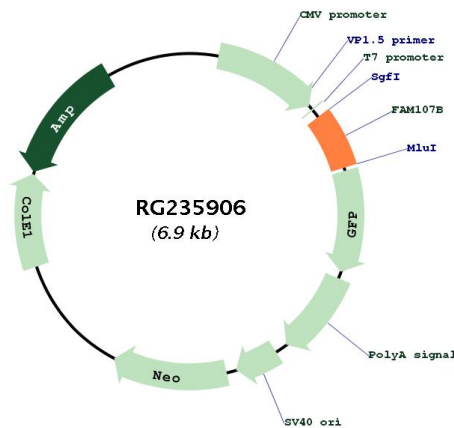


[View online »](#)

Cloning Scheme:



Plasmid Map:



ACCN:

NM_001282697

ORF Size:

393 bp

OTI Disclaimer:

The molecular sequence of this clone aligns with the gene accession number as a point of reference only. However, individual transcript sequences of the same gene can differ through naturally occurring variations (e.g. polymorphisms), each with its own valid existence. This clone is substantially in agreement with the reference, but a complete review of all prevailing variants is recommended prior to use. [More info](#)

OTI Annotation:	This clone was engineered to express the complete ORF with an expression tag. Expression varies depending on the nature of the gene.
Components:	The ORF clone is ion-exchange column purified and shipped in a 2D barcoded Matrix tube containing 10ug of transfection-ready, dried plasmid DNA (reconstitute with 100 ul of water).
RefSeq:	NM_001282697.2
RefSeq Size:	3291 bp
RefSeq ORF:	396 bp
Locus ID:	83641
UniProt ID:	Q9H098
Cytogenetics:	10p13
MW:	16 kDa