

Product datasheet for **RG235890**

CRSP8 (MED27) (NM_001253882) Human Tagged ORF Clone

Product data:

| | |
|---------------------------|--|
| Product Type: | Expression Plasmids |
| Product Name: | CRSP8 (MED27) (NM_001253882) Human Tagged ORF Clone |
| Tag: | TurboGFP |
| Symbol: | CRSP8 |
| Synonyms: | CRAP34; CRSP8; CRSP34; MED3; NEDSCAC; TRAP37 |
| Mammalian Cell Selection: | Neomycin |
| Vector: | pCMV6-AC-GFP (PS100010) |
| E. coli Selection: | Ampicillin (100 ug/mL) |
| ORF Nucleotide Sequence: | >RG235890 representing NM_001253882. Blue=ORF Red=Cloning site Green=Tag(s) |

GCTCGTTTAGTGAACCGTCAGAATTTTGTAAACGACTCACTATAGGGCGGCCGGAATTCGTCGACTG
 GATCCGGTACCGAGGAGATCTGCCGCC**CGCATCGCC**
 ATGGCGGACGTGATAAATGTCAGTGTGAACCTGGAGGCCTTTTCCAGGCCATTAGTGCCATCCAGGCG
 CTGCGCTCCAGCGTGAGCAGGTGTTGCGACTGCCTGAAGGATGGGATGCGGAACAAGGAGACGCTGGAG
 GGCCGGGAGAAGGCCTTTATTGCGCACTCCAGGACAACCTACATTCCGGTCAACCGGGACCTCAATGAG
 CTGGAACGTCTGAGCAATCTGGTAGGCAAGCCATCTGAGAACCATCCTCTTCATAACAGTGGGCTGTTA
 AGCCTGGATCCTGTGCAGGACAAAACCTCTCTATAGTCAACTCCTTCAAGCATATAAGTGGTCAAAC
 AAGAAAGAGCAACTTTCTATTCCAAGAATATTCCATTGAAAAGTC
ACGCGTACGCGGCCGCTCGAG - GFP Tag - GTTTAAAC

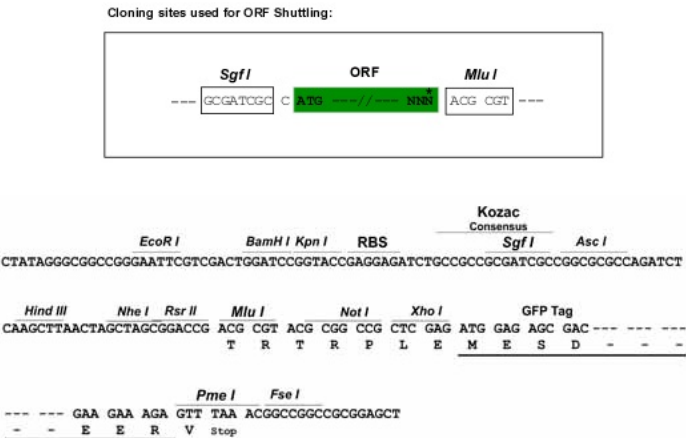
| | |
|-------------------|---|
| Protein Sequence: | >Peptide sequence encoded by RG235890 Blue=ORF Red=Cloning site Green=Tag(s) |
|-------------------|---|

MADVINVSVNLEAFSQAISAIQALRSSVSRVFDCLKDGMRNKETLEGREKAFIAHFQDNLHSVNRDLNE
 LERLSNLVGKPSENHPLHNSGLLSLDPVQDKTPLYSQLQAYKWSNKKEQLSIPRIFHWKV
TRTRPLEMESDESGLPAMEIECRITGTLNGVEFELVGGEGTPEQGRMTNKMSTKGALTFSPYLLSHV
 MGYGFYHFGTYPSTYENPFLHAINNGGYTNTRIEKYEDGGVLHVSFSYRYEAGRVIGDFKVMGTGFPED
 SVIFTDKIIRSNAVEHLHPMGDNDLDGSFTRTFSLRDGGYSSVVDSHMHFKAISHPSILQNGGPMFA
 FRRVEEDHSNTELGIVEYQHAFKTPDADAGEERV

| | |
|--------------------|-----------|
| Restriction Sites: | SgfI-MluI |
|--------------------|-----------|


[View online »](#)

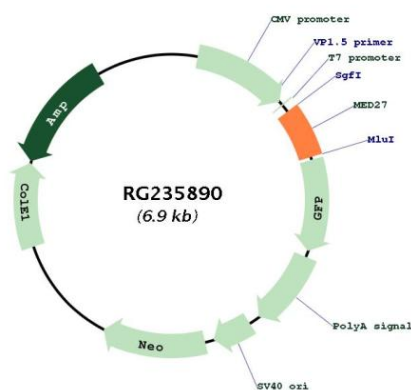
Cloning Scheme:



| | |
|-----------------|--|
| ACCN: | NM_001253882 |
| ORF Size: | 396 bp |
| OTI Disclaimer: | The molecular sequence of this clone aligns with the gene accession number as a point of reference only. However, individual transcript sequences of the same gene can differ through naturally occurring variations (e.g. polymorphisms), each with its own valid existence. This clone is substantially in agreement with the reference, but a complete review of all prevailing variants is recommended prior to use. More info |
| OTI Annotation: | This clone was engineered to express the complete ORF with an expression tag. Expression varies depending on the nature of the gene. |
| Components: | The ORF clone is ion-exchange column purified and shipped in a 2D barcoded Matrix tube containing 10ug of transfection-ready, dried plasmid DNA (reconstitute with 100 ul of water). |
| Note: | Plasmids are not sterile. For experiments where strict sterility is required, filtration with 0.22um filter is required. |
| RefSeq: | NM_001253882.2 |
| RefSeq Size: | 799 bp |
| RefSeq ORF: | 393 bp |
| Locus ID: | 9442 |
| UniProt ID: | Q6P2C8 |
| Cytogenetics: | 9q34.13 |
| MW: | 15.3 kDa |

Gene Summary:

The activation of gene transcription is a multistep process that is triggered by factors that recognize transcriptional enhancer sites in DNA. These factors work with co-activators to direct transcriptional initiation by the RNA polymerase II apparatus. The protein encoded by this gene is a subunit of the CRSP (cofactor required for SP1 activation) complex, which, along with TFIID, is required for efficient activation by SP1. This protein is also a component of other multisubunit complexes e.g. thyroid hormone receptor-(TR-) associated proteins which interact with TR and facilitate TR function on DNA templates in conjunction with initiation factors and cofactors. Alternatively spliced transcript variants encoding multiple isoforms have been observed for this gene, and a pseudogene of this gene is located on the long arm of chromosome 5. [provided by RefSeq, Dec 2011]

Product images:


Circular map for RG235890