

Product datasheet for **RG235802**

PGAP2 (NM_001283040) Human Tagged ORF Clone

Product data:

Product Type: Expression Plasmids
Product Name: PGAP2 (NM_001283040) Human Tagged ORF Clone
Tag: TurboGFP
Symbol: PGAP2
Synonyms: CWH43-N; FRAG1; HPMRS3; MRT17; MRT21
Mammalian Cell Selection: Neomycin
Vector: pCMV6-AC-GFP (PS100010)
E. coli Selection: Ampicillin (100 ug/mL)
ORF Nucleotide Sequence: >RG235802 representing NM_001283040.
Blue=ORF Red=Cloning site Green=Tag(s)

```
GCTCGTTTGTAGTGAACCGTCAGAATTTGTAAACGACTCACTATAGGGCGGCCGGGAATTCGTCGACTG
GATCCGGTACCGAGGAGATCTGCCGCCGCGATCGCC
ATGGCTAGATTGGGAAGCACCGGCGGGGTGTCGGGAAGGGTGGTGACGCAACATAGAGACTCCGCCCCC
TTCCTTGGAGCGCCGCGACTCGGGCTGAGGGAGCTCGGGCCAATCAGAGGGACGGCCCCAGAATGGCAT
GGTAGATGGAACGCAGCTGAGAGCCATCCACGAAAATGCTTTCATTGTGTTTCATTGCCTCATCCCTCGG
GCACATGCTCCTCACCTGCATTCTCTGGCGTTGACCAAGAAGCACACAGTAAGTCAGGAGGATCGCAA
GTCCTACAGCTGAAAACAGCGGCTCTTCATCATCAACTTCATCTCCTTCTCTCGGGCTGGCTGTCTA
CTTTCGGCACAACATGTATTG
ACGCGTACGCGGCCGCTCGAG - GFP Tag - GTTTAAAC
```

Protein Sequence: >Peptide sequence encoded by RG235802
Blue=ORF Red=Cloning site Green=Tag(s)

```
MARLGSTGGVSGRVVTQHRDSAPFLGAPRLGLRELGPIRGTAPPEWHGRWNAEAESHPRKCFHCVHCLIPR
AHAPHLHSLAVDQEAHSGSGSQQVLETAALHHQLHLLLLGAGCLLSAQHVL
TRTRPLEMESDESGLPAMEIECRITGTLNGVEFELVGGGEGTPEQGRMTNKMSTKGALTFSPYLLSHV
MGYGFYHFGTYPSGYENPFLHAINNGGYNTRIEKYEDGGVLHVSFSYRYEAGRVIGDFKVMGTGFPEP
SVIFTDKIIRSNAIVEHLHPMGDNDLDGSFTRTFSLRDGGYSSVVDSMHFKSAIHPSILQNGGPMFA
FRRVEEDHSNTELGIVEYQHAFKTPDADAGEERV
```

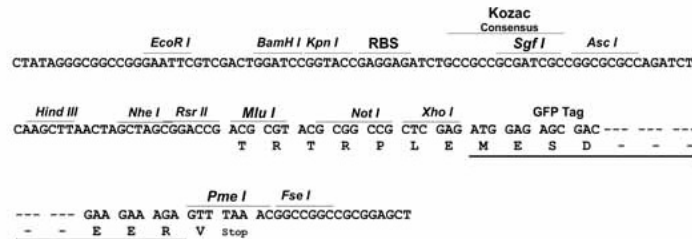
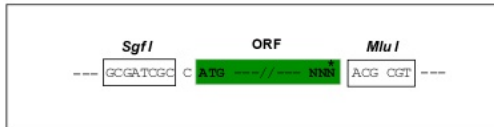
Restriction Sites: Sgfl-MluI



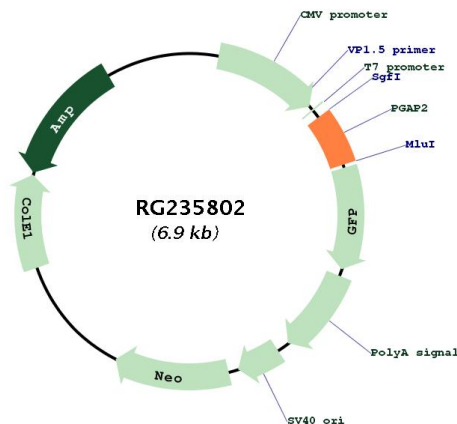
[View online »](#)

Cloning Scheme:

Cloning sites used for ORF Shutting:



Plasmid Map:



ACCN: NM_001283040

ORF Size: 366 bp

OTI Disclaimer: The molecular sequence of this clone aligns with the gene accession number as a point of reference only. However, individual transcript sequences of the same gene can differ through naturally occurring variations (e.g. polymorphisms), each with its own valid existence. This clone is substantially in agreement with the reference, but a complete review of all prevailing variants is recommended prior to use. [More info](#)

OTI Annotation:	This clone was engineered to express the complete ORF with an expression tag. Expression varies depending on the nature of the gene.
Components:	The ORF clone is ion-exchange column purified and shipped in a 2D barcoded Matrix tube containing 10ug of transfection-ready, dried plasmid DNA (reconstitute with 100 ul of water).
RefSeq:	NM_001283040.1 , NP_001269969.1
RefSeq Size:	1460 bp
RefSeq ORF:	369 bp
Locus ID:	27315
UniProt ID:	Q9UHJ9
Cytogenetics:	11p15.4
Protein Families:	Druggable Genome, Transmembrane
MW:	13.6 kDa
Gene Summary:	The protein encoded by this gene plays a role in the maturation of glycosylphosphatidylinositol (GPI) anchors on GPI-anchored proteins. Mutations in this gene are associated with an autosomal recessive syndrome characterized by hyperphosphatasia and intellectual disability. [provided by RefSeq, Jul 2017]