

## Product datasheet for **RG235686**

### **PGPEP1 (NM\_001300927) Human Tagged ORF Clone**

#### Product data:

**Product Type:** Expression Plasmids  
**Product Name:** PGPEP1 (NM\_001300927) Human Tagged ORF Clone  
**Tag:** TurboGFP  
**Symbol:** PGPEP1  
**Synonyms:** PAP-I; Pcp; PGI; PGP; PGP-I; PGPI  
**Mammalian Cell Selection:** Neomycin  
**Vector:** pCMV6-AC-GFP (PS100010)  
**E. coli Selection:** Ampicillin (100 ug/mL)  
**ORF Nucleotide Sequence:** >RG235686 representing NM\_001300927.  
Blue=ORF Red=Cloning site Green=Tag(s)

```
GCTCGTTTAGTGAACCGTCAGAATTTGTAAACGACTCACTATAGGGCGCCGGGAATTCGTCGACTG
GATCCGGTACCGAGGAGATCTGCCGCCGCGATCGCC
ATGGAGCAGCCGAGGAAGGCGGTGGTAGTGACGGGATTTGGCCCTTTGGGGAACACACCGTGAACGCC
AGTTGGATTGCAGTTCAGGAGCTAGAAAAGCTAGGCCTTGGCGACAGCGTGGACCTGCATGTGTACGAG
ATTCGGTTGAGTACCAAACAGTCCAGAGACTCATCCCCGCCCTGTGGGAGAAGCACAGTCCACAGATA
TCTCTGCGACTTACCTACTACACCTCTTTGTACCAGAGTCACGGTCGATCAGCCTTCGTCCACGTGCC
CCCCTGGGGAAGCCGTACAACGCGGACCAGCTGGGCAGGGCACTGAGAGCCATCAT
ACGCGTACGCGGCCGCTCGAG - GFP Tag - GTTTAAAC
```

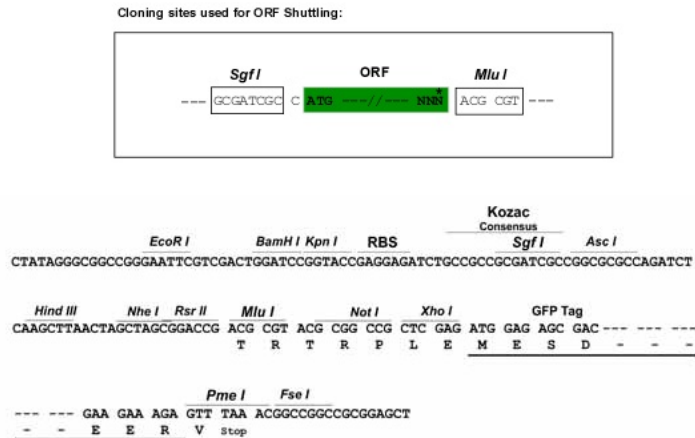
**Protein Sequence:** >Peptide sequence encoded by RG235686  
Blue=ORF Red=Cloning site Green=Tag(s)

```
MEQPRKAVVVTGFGPFGHEHTVNASWIAVQELEKLGSDVDLHVYEIPVEYQTVQRLIPALWEKHSPQI
SLRLYLLHLFVPESRSISLRPRAPTGEAVQRGPAGQGTESHH
TRTRPLEMESDESGLPAMEIECRITGTLNGVEFELVGGEGTPEQGRMTNKMSTKGALTFSPYLLSHV
MGYGFYHFGTYPSTYENPFLHAINNGGYNTRIEKYEDGGVLHVFSYRYEAGRVIGDFKVMGTGFPED
SVIFTDKIIRSNAIVEHLHPMGDNDLDGSFTRTFSLRDGGYSSVVDSDMHFKSAIHPSILQNGGPMFA
FRRVEEDHSNTELGIVEYQHAFKTPDADAGEERV
```

**Restriction Sites:** Sgfl-MluI



[View online »](#)

**Cloning Scheme:**


**ACCN:** NM\_001300927

**ORF Size:** 333 bp

**OTI Disclaimer:** The molecular sequence of this clone aligns with the gene accession number as a point of reference only. However, individual transcript sequences of the same gene can differ through naturally occurring variations (e.g. polymorphisms), each with its own valid existence. This clone is substantially in agreement with the reference, but a complete review of all prevailing variants is recommended prior to use. [More info](#)

**OTI Annotation:** This clone was engineered to express the complete ORF with an expression tag. Expression varies depending on the nature of the gene.

**Components:** The ORF clone is ion-exchange column purified and shipped in a 2D barcoded Matrix tube containing 10ug of transfection-ready, dried plasmid DNA (reconstitute with 100 ul of water).

**RefSeq:** [NM\\_001300927.2](#)

**RefSeq Size:** 6862 bp

**RefSeq ORF:** 336 bp

**Locus ID:** 54858

**UniProt ID:** [Q9NXJ5](#)

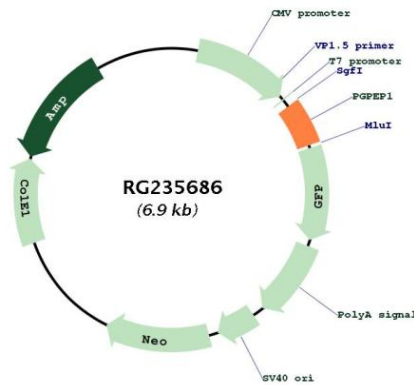
**Cytogenetics:** 19p13.11

**Protein Families:** Druggable Genome, Protease

**MW:** 12.8 kDa

**Gene Summary:**

The gene encodes a cysteine protease and member of the peptidase C15 family of proteins. The encoded protein cleaves amino terminal pyroglutamate residues from protein substrates including thyrotropin-releasing hormone and other neuropeptides. Expression of this gene may be downregulated in colorectal cancer, while activity of the encoded protein may be negatively correlated with cancer progression in colorectal cancer patients. Activity of the encoded protease may also be altered in other disease states including in liver cirrhosis, which is associated with reduced protease activity, and in necrozoospermia, which is associated with elevated protease activity. [provided by RefSeq, Jul 2016]

**Product images:**


Circular map for RG235686