

Product datasheet for **RG235669**

PEA15 (NM_001297578) Human Tagged ORF Clone

Product data:

Product Type: Expression Plasmids
Product Name: PEA15 (NM_001297578) Human Tagged ORF Clone
Tag: TurboGFP
Symbol: PEA15
Synonyms: HMAT1; HUMMAT1H; MAT1; MAT1H; PEA-15; PED; PED-PEA15; PED/PEA15
Mammalian Cell Selection: Neomycin
Vector: pCMV6-AC-GFP (PS100010)
E. coli Selection: Ampicillin (100 ug/mL)
ORF Nucleotide Sequence: >RG235669 representing NM_001297578.
Blue=ORF Red=Cloning site Green=Tag(s)

```
GCTCGTTTAGTGAACCGTCAGAATTTGTAAACGACTCACTATAGGGCGCCGGGAATTCGTCGACTG
GATCCGGTACCGAGGAGATCTGCCGCCGCGATCGCC
ATGGCTGAGTACGGGACCCTCTGCAAGACCTGACCAACAACATCACCTTGAAGATCTAGAACAGCTC
AAGTCGGCCTGCAAGGAAGACATCCCCAGCGAAAAGAACAACCTCTCTACATTGAGCACATCTTTGAG
ATCTCCCGCGTCTGACCTACTACTATGGTGGTTGACTACAGAACCCGTGTGCTGAAGATCTCTGAG
GAGGATGAGCTGGACCAAGCTAACCCGTATCCCCAGTGCCAAGAAGTACAAAGACATTATCCGGCAG
CCCTCTGAGGAAGAGATCATCAAATTGGCTCCCCACCGAAGAAGGCC
ACGCGTACGCGGCCGCTCGAG - GFP Tag - GTTTAAAC
```

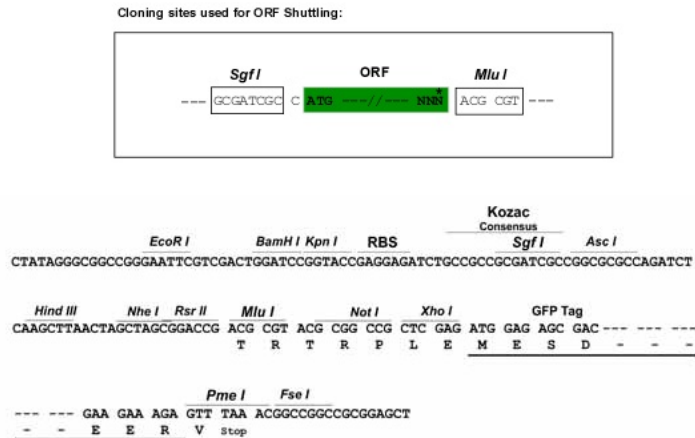
Protein Sequence: >Peptide sequence encoded by RG235669
Blue=ORF Red=Cloning site Green=Tag(s)

```
MAEYGTLLQDLTNNITLEDLEQLKSACKEDIPSEKNNLSYIEHIFEISRRPDLTMVVDRTRVLKISE
EDELDTKLTRIPSAKKYKDIIRQPSEEEIIKLAPPPKKA
TRTRPLEMESDESGLPAMEIECRITGTLNGVEFELVGGEGTPEQGRMTNKMKSTKGALTFSPYLLSHV
MGYGFYHFGTYPSTYENPFLHAINNGGYNTRIEKYEDGGVLHVSFSYRYEAGRVIGDFKVMGTGFPED
SVIFTDKIIRSNAIVEHLHPMGDNDLDGSFTRTFSLRDGGYSSVVDSHMHFKSAIHPSILQNGGPMFA
FRRVEEDHSNTELGIVEYQHAFKTPDADAGEERV
```

Restriction Sites: SgfI-MluI



[View online »](#)

Cloning Scheme:


ACCN: NM_001297578

ORF Size: 324 bp

OTI Disclaimer: The molecular sequence of this clone aligns with the gene accession number as a point of reference only. However, individual transcript sequences of the same gene can differ through naturally occurring variations (e.g. polymorphisms), each with its own valid existence. This clone is substantially in agreement with the reference, but a complete review of all prevailing variants is recommended prior to use. [More info](#)

OTI Annotation: This clone was engineered to express the complete ORF with an expression tag. Expression varies depending on the nature of the gene.

Components: The ORF clone is ion-exchange column purified and shipped in a 2D barcoded Matrix tube containing 10ug of transfection-ready, dried plasmid DNA (reconstitute with 100 ul of water).

RefSeq: [NM_001297578.2](#)

RefSeq Size: 2443 bp

RefSeq ORF: 327 bp

Locus ID: 8682

UniProt ID: [Q15121](#)

Cytogenetics: 1q23.2

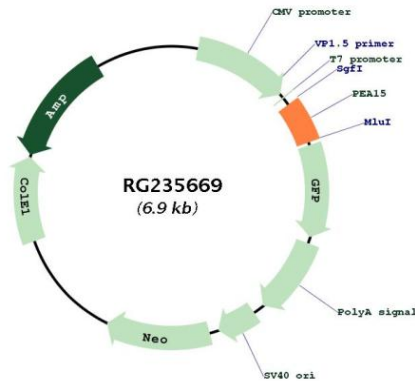
Protein Families: Druggable Genome

MW: 13 kDa

Gene Summary:

This gene encodes a death effector domain-containing protein that functions as a negative regulator of apoptosis. The encoded protein is an endogenous substrate for protein kinase C. This protein is also overexpressed in type 2 diabetes mellitus, where it may contribute to insulin resistance in glucose uptake. Alternative splicing results in multiple transcript variants. [provided by RefSeq, Jul 2014]

Product images:



Circular map for RG235669