

Product datasheet for **RG235652**

Ninjurin2 (NINJ2) (NM_001294346) Human Tagged ORF Clone

Product data:

Product Type: Expression Plasmids
Product Name: Ninjurin2 (NINJ2) (NM_001294346) Human Tagged ORF Clone
Tag: TurboGFP
Symbol: NINJ2
Mammalian Cell Selection: Neomycin
Vector: pCMV6-AC-GFP (PS100010)
E. coli Selection: Ampicillin (100 ug/mL)
ORF Nucleotide Sequence: >RG235652 representing NM_001294346.
 Blue=ORF Red=Cloning site Green=Tag(s)

```
GCTCGTTTAGTGAACCGTCAGAATTTTGTAAACGACTCACTATAGGGCGGCCGGGAATTCGTCGACTG
GATCCGGTACCGAGGAGATCTGCCGCCGCGATCGCC
ATGCTGGACGTGGCCCTGTTTCATGTCCAACGCCATGCCGCTGAAGGCGGTGCTGGAGCAGGGACCATCC
TCTCACTACTACACCACCCTGGTCACCCTCATCAGCCTCTCTGCTCCTGCAGGTGGTCATCGGTGTC
CTGCTCGTGGTCATTGCACGGCTGAACCTGAATGAGGTAGAAAAGCAGTGGCGACTCAACCAGCTCAAC
AACGCAGCCACCATCTTGGTCTTCTCACTGTGGTCATCAATGTTTTTCATTACAGCCTTCGGGGCACAT
AAAACAGGGTTCCTGGCTGCCAGGGCCTCAAGGAATCCTCTC
ACGCGTACGCGGCCGCTCGAG - GFP Tag - GTTTAAAC
```

Protein Sequence: >Peptide sequence encoded by RG235652
 Blue=ORF Red=Cloning site Green=Tag(s)

```
MLDVALFMSNAMRLKAVLEQGPSSHYTTLVTLISL SLLLQVIVGLLVVIARLN LNEVEKQWRLNQLN
NAATILVFFTVVINVFITAFGAHKTGFLAARASNPL
TRTRPLEMESDESGLPAMEIECRITGTLNGVEFELVGGEGTPEQGRMTNKMSTKGALTFSPYLLSHV
MGYGFYHFGTYPSTYENPFLHAINNGYTNRIEKYEDGGVLHVSFSYRYEAGRVIGDFKVMGTGFPED
SVIFTDKIIRS NATVEHLHPMGDNDLDGSFTRTFSLRDGGYSSVVD SHMHFKSAIHP SILQNGGPMFA
FRRVEEDHSNTELGIVEYQHAFKTPDADAGEERV
```

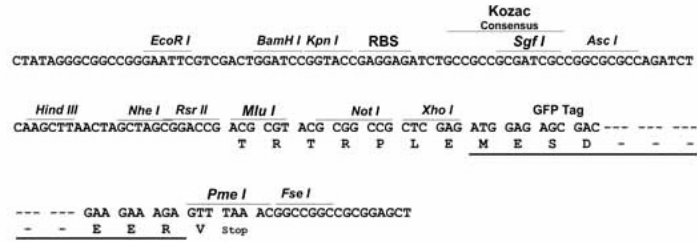
Restriction Sites: SgfI-MluI



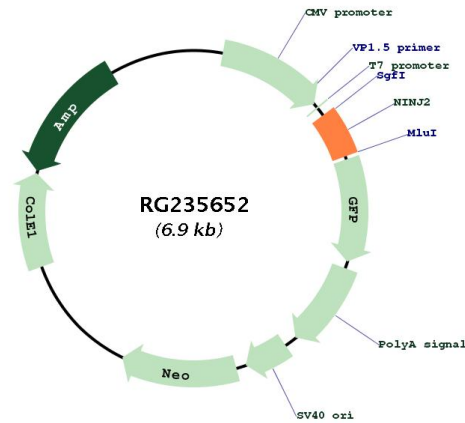
[View online »](#)

Cloning Scheme:

Cloning sites used for ORF Shutting:



Plasmid Map:



ACCN: NM_001294346

ORF Size: 318 bp

OTI Disclaimer:	The molecular sequence of this clone aligns with the gene accession number as a point of reference only. However, individual transcript sequences of the same gene can differ through naturally occurring variations (e.g. polymorphisms), each with its own valid existence. This clone is substantially in agreement with the reference, but a complete review of all prevailing variants is recommended prior to use. More info
OTI Annotation:	This clone was engineered to express the complete ORF with an expression tag. Expression varies depending on the nature of the gene.
Components:	The ORF clone is ion-exchange column purified and shipped in a 2D barcoded Matrix tube containing 10ug of transfection-ready, dried plasmid DNA (reconstitute with 100 ul of water).
RefSeq:	NM_001294346.2
RefSeq Size:	986 bp
RefSeq ORF:	321 bp
Locus ID:	4815
UniProt ID:	Q9NZG7
Cytogenetics:	12p13.33
Protein Families:	Transmembrane
MW:	12.2 kDa
Gene Summary:	The protein encoded by this gene belongs to the ninjurin (for nerve injury induced) family. It is a cell surface adhesion protein that is upregulated in Schwann cells surrounding the distal segment of injured nerve, and promotes neurite outgrowth, thus may have a role in nerve regeneration after nerve injury. [provided by RefSeq, Oct 2011]