

Product datasheet for **RG235649**

Glutathione S Transferase theta 1 (GSTT1) (NM_001293813) Human Tagged ORF Clone

Product data:

Product Type: Expression Plasmids
Product Name: Glutathione S Transferase theta 1 (GSTT1) (NM_001293813) Human Tagged ORF Clone
Tag: TurboGFP
Symbol: GSTT1
Mammalian Cell Selection: Neomycin
Vector: pCMV6-AC-GFP (PS100010)
E. coli Selection: Ampicillin (100 ug/mL)
ORF Nucleotide Sequence: >RG235649 representing NM_001293813.
Blue=ORF Red=Cloning site Green=Tag(s)

```
GCTCGTTTAGTGAACCGTCAGAATTTTGTAAACGACTCACTATAGGGCGGCCGGGAATTCGTCGACTG
GATCCGGTACCGAGGAGATCTGCCGCCGCGATCGCC
ATGGGCCTGGAGCTGTACCTGGACCTGTGTCCCAGCCCTGCCGCGCTGTTACATCTTTGCCAAGAAG
AACGACATTCCTTCGAGCTGCGCATCGTGGATCTGATTAAGGTCAGCACTTAAGCGATGCCTTTGCC
CAGGTGAACCCCTCAAGAAGGTGCCAGCCTTGAAGGACGGGACTTCACCTTGACGGAGAGCCCGTGG
GTGCTGGCTGCCAAGTCTTGAAGGCCGACCAAGCTGGCCACATGGCGGCAGCGCTGGAGGCAGCAG
TGGGGGAGGACCTCTCCAGGAGGCCCATGAGGTCATTC
ACGCGTACGCGGCCGCTCGAG - GFP Tag - GTTTAAAC
```

Protein Sequence: >Peptide sequence encoded by RG235649
Blue=ORF Red=Cloning site Green=Tag(s)

```
MGLELYDLLSQPCRAVYIFAKKNDIPFELRIVDLIKQHLSDAFAQVNPLKVPALKDGDFTLTESPW
VLAAKSSKADPSWPHGGSARQQWGRTRSSRRPMSRF
TRTRPLEMESDESGLPAMEIECRITGTLNGVEFELVGGEGTPEQGRMTNKMSTKGALTFSPYLLSHV
MGYGFYHFGTYPSGYENPFLHAINNGYTNRIEKYEDGGVLHVSFSYRYEAGRVIGDFKVMGTGFPED
SVIFTDKIIRSNAIVEHLHPMGDNDLDGSFTRTFSLRDGGYSSVVDSHMHFKSAIHPSILQNGGPMFA
FRRVEEDHSNTELGIVEYQHAFKTPDADAGEERV
```

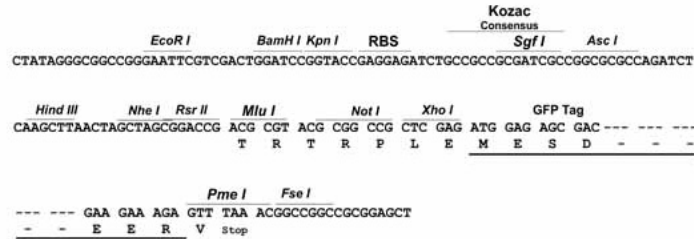
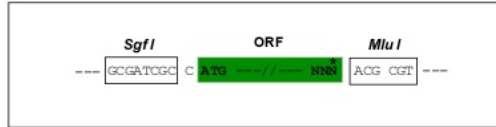
Restriction Sites: SgfI-MluI



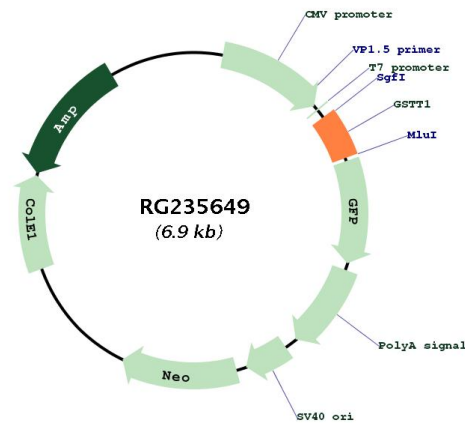
[View online »](#)

Cloning Scheme:

Cloning sites used for ORF Shutting:



Plasmid Map:



ACCN: NM_001293813

ORF Size: 315 bp

OTI Disclaimer:	The molecular sequence of this clone aligns with the gene accession number as a point of reference only. However, individual transcript sequences of the same gene can differ through naturally occurring variations (e.g. polymorphisms), each with its own valid existence. This clone is substantially in agreement with the reference, but a complete review of all prevailing variants is recommended prior to use. More info
OTI Annotation:	This clone was engineered to express the complete ORF with an expression tag. Expression varies depending on the nature of the gene.
Components:	The ORF clone is ion-exchange column purified and shipped in a 2D barcoded Matrix tube containing 10ug of transfection-ready, dried plasmid DNA (reconstitute with 100 ul of water).
RefSeq:	NM_001293813.1 , NP_001280742.1
RefSeq Size:	781 bp
RefSeq ORF:	318 bp
Locus ID:	2952
Cytogenetics:	22q11.23
Protein Pathways:	Drug metabolism - cytochrome P450, Glutathione metabolism, Metabolism of xenobiotics by cytochrome P450
MW:	12.3 kDa
Gene Summary:	The protein encoded by this gene, glutathione S-transferase (GST) theta 1 (GSTT1), is a member of a superfamily of proteins that catalyze the conjugation of reduced glutathione to a variety of electrophilic and hydrophobic compounds. Human GSTs can be divided into five main classes: alpha, mu, pi, theta, and zeta. The theta class includes GSTT1, GSTT2, and GSTT2B. GSTT1 and GSTT2/GSTT2B share 55% amino acid sequence identity and may play a role in human carcinogenesis. The GSTT1 gene is haplotype-specific and is absent from 38% of the population. Alternative splicing of this gene results in multiple transcript variants. [provided by RefSeq, Sep 2015]