

## Product datasheet for **RG235619**

### SPINK2 (NM\_001271719) Human Tagged ORF Clone

#### Product data:

**Product Type:** Expression Plasmids  
**Product Name:** SPINK2 (NM\_001271719) Human Tagged ORF Clone  
**Tag:** TurboGFP  
**Symbol:** SPINK2  
**Synonyms:** HUSI-II; SPGF29  
**Mammalian Cell Selection:** Neomycin  
**Vector:** pCMV6-AC-GFP (PS100010)  
**E. coli Selection:** Ampicillin (100 ug/mL)  
**ORF Nucleotide Sequence:** >RG235619 representing NM\_001271719.  
Blue=ORF Red=Cloning site Green=Tag(s)

```
GCTCGTTTAGTGAACCGTCAGAATTTGTAAACGACTCACTATAGGGCGCCGGGAATTCGTCGACTG
GATCCGGTACCGAGGAGATCTGCCGCCGCGATCGCC
ATGGCGCTGTCGGTGCTGCGCTTGGCGCTGCTGCTCCTGGCAGTTACCTTCGCAGGTAGCGCTCGGAGC
GGTCCTGGCGAGCGGGGACCTCCGGAGAAAAGCGGTTTGGGAGTCAGACCGGCGCGGACCTGCCCT
GCTCCGGGCGGCCTCGGCGACGGTACCCGCGGCCCGTTACTGGCGTTCCCCAGAGGACCTGCCAGAA
CGCCAAACTGCTCTCAGTATAGATTACCAGGATGTCCAGACACTTTAACCTGTGTGTGGCAGTGACA
TGTCCTTATGCCAATGAATGTACTCTGTGCA
ACGCGTACGCGGCCGCTCGAG - GFP Tag - GTTAAAC
```

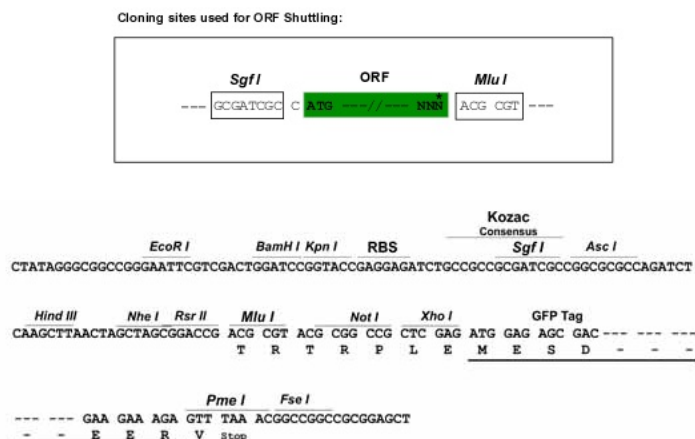
**Protein Sequence:** >Peptide sequence encoded by RG235619  
Blue=ORF Red=Cloning site Green=Tag(s)

```
MALSVLRLALLLAVTFAGSARSGPGERGPPPEKSGFGSQTGGGPCPAPGGLDGTTRAPVTGGSPEDLPE
RQTALSIDYQDVPDTLTLCAVATCPLMPMNVLCA
TRTRPLEMESDESGLPAMEIECRITGTLNGVEFELVGGEGTPEQGRMTNKMKSTKGALTFSPYLLSHV
MGYGFYHFGTYPSTYENPFLHAINNGGYNTRIEKYEDGGVLHVSFSYRYEAGRVIGDFKVMGTGFPED
SVIFTDKIIRSNAIVEHLHPMGDNDLDGSFTRTFSLRDGGYSSVVDSHMHFKSAIHPSILQNGGPMFA
FRRVEEDHSNTELGIVEYQHAFKTPDADAGEERV
```

**Restriction Sites:** Sgfl-MluI



[View online »](#)

**Cloning Scheme:**


**ACCN:** NM\_001271719

**ORF Size:** 309 bp

**OTI Disclaimer:** The molecular sequence of this clone aligns with the gene accession number as a point of reference only. However, individual transcript sequences of the same gene can differ through naturally occurring variations (e.g. polymorphisms), each with its own valid existence. This clone is substantially in agreement with the reference, but a complete review of all prevailing variants is recommended prior to use. [More info](#)

**OTI Annotation:** This clone was engineered to express the complete ORF with an expression tag. Expression varies depending on the nature of the gene.

**Components:** The ORF clone is ion-exchange column purified and shipped in a 2D barcoded Matrix tube containing 10ug of transfection-ready, dried plasmid DNA (reconstitute with 100 ul of water).

**RefSeq:** [NM\\_001271719.1](#), [NP\\_001258648.1](#)

**RefSeq Size:** 746 bp

**RefSeq ORF:** 312 bp

**Locus ID:** 6691

**Cytogenetics:** 4q12

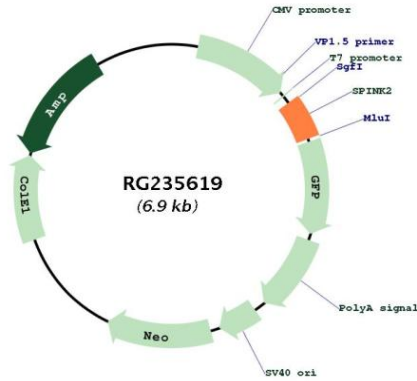
**Protein Families:** Secreted Protein, Transmembrane

**MW:** 10.8 kDa

**Gene Summary:**

This gene encodes a member of the family of serine protease inhibitors of the Kazal type (SPINK). The encoded protein acts as a trypsin and acrosin inhibitor in the genital tract and is localized in the spermatozoa. The protein has been associated with the progression of lymphomas. Alternative splicing results in multiple transcript variants. [provided by RefSeq, Nov 2012]

**Product images:**



Circular map for RG235619