

Product datasheet for **RG235587**

OCIAD2 (NM_001286773) Human Tagged ORF Clone

Product data:

Product Type: Expression Plasmids
Product Name: OCIAD2 (NM_001286773) Human Tagged ORF Clone
Tag: TurboGFP
Symbol: OCIAD2
Mammalian Cell Selection: Neomycin
Vector: pCMV6-AC-GFP (PS100010)
E. coli Selection: Ampicillin (100 ug/mL)
ORF Nucleotide Sequence: >RG235587 representing NM_001286773.
 Blue=ORF Red=Cloning site Green=Tag(s)

```
GCTCGTTTAGTGAACCGTCAGAATTTTGTAAATACGACTCACTATAGGGCGGCCGGGAATTCGTCGACTG
GATCCGGTACCGAGGAGATCTGCCGCCCGCATCGCC
ATGGCTTCAGCGTCTGCTCGTGAAACCAAGATAAAGATGCCATTTTCCACCACCAAGCAAGCAGAGC
CTGTTGTTTTGTCCAAAATCAAACCTGCACATCCACAGAGCAGAGATCTCAAAGATTATGCGAGAATGT
CAGGAAGAAAGTTTCTGGAAGAGAGCTCTGCCTTTTTCTTTGTAAGCATGCTTGTCACCAGGGACTA
GTCTACCAAGTTATTTGGCAGCTAATTCTAGATTTGGATCATTGCCCAAAGTTGCACGCACTGCCTCC
TTACCTGTGAGGAATGCAAAA
ACGCGTACGCGGCCGCTCGAG - GFP Tag - GTTTAAAC
```

Protein Sequence: >Peptide sequence encoded by RG235587
 Blue=ORF Red=Cloning site Green=Tag(s)

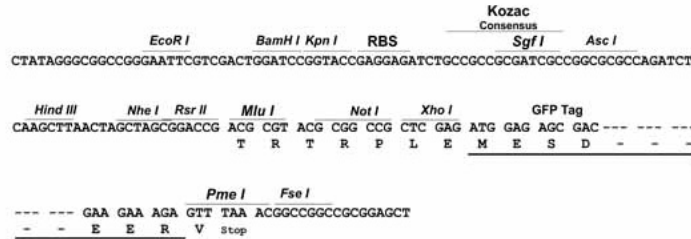
```
MASASARGNQDKDAHFPSPKQSLLFCKPSKLIHRAEISKIMRECQEESFWKRALPFLVSMMLVTQGL
VYQGYLAANSRFGSLPKVARTASLPVRNAK
TRTRPLEMESDESGLPAMEIECRITGTLNGVEFELVGGEGTPEQGRMTNKMSTKGALTFSPYLLSHV
MGYGFYHFGTYPSGYENPFLHAINNGYTNRIEKYEDGGVLHVSFSYRYEAGRVIGDFKVMGTGFPEP
SVIFTDKIIRSNTAVEHLHPMGDNDLDGSFTRTFSLRDGGYSSVVDSHMHFKSAIHPSILQNGGPMFA
FRRVEEDHSNTELGIVEYQHAFKTPDADAGEERV
```

Restriction Sites: SgfI-MluI

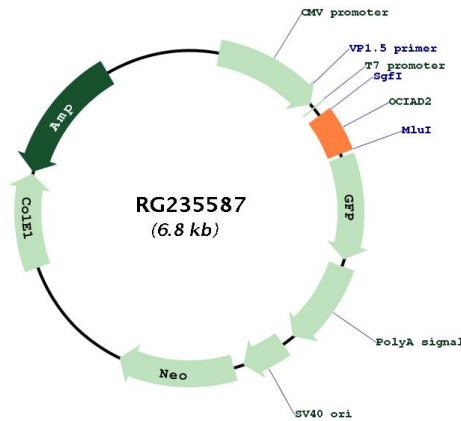


Cloning Scheme:

Cloning sites used for ORF Shutting:



Plasmid Map:



ACCN: NM_001286773

ORF Size: 297 bp

OTI Disclaimer:	The molecular sequence of this clone aligns with the gene accession number as a point of reference only. However, individual transcript sequences of the same gene can differ through naturally occurring variations (e.g. polymorphisms), each with its own valid existence. This clone is substantially in agreement with the reference, but a complete review of all prevailing variants is recommended prior to use. More info
OTI Annotation:	This clone was engineered to express the complete ORF with an expression tag. Expression varies depending on the nature of the gene.
Components:	The ORF clone is ion-exchange column purified and shipped in a 2D barcoded Matrix tube containing 10ug of transfection-ready, dried plasmid DNA (reconstitute with 100 ul of water).
RefSeq:	NM_001286773.1 , NP_001273702.1
RefSeq Size:	707 bp
RefSeq ORF:	300 bp
Locus ID:	132299
UniProt ID:	Q56VL3
Cytogenetics:	4p11
MW:	11 kDa