

Product datasheet for **RG235562**

CNIH4 (NM_001277197) Human Tagged ORF Clone

Product data:

Product Type: Expression Plasmids
Product Name: CNIH4 (NM_001277197) Human Tagged ORF Clone
Tag: TurboGFP
Symbol: CNIH4
Synonyms: CNIH-4; CNIH2; HSPC163
Mammalian Cell Selection: Neomycin
Vector: pCMV6-AC-GFP (PS100010)
E. coli Selection: Ampicillin (100 ug/mL)
ORF Nucleotide Sequence: >RG235562 representing NM_001277197.
Blue=ORF Red=Cloning site Green=Tag(s)

```
GCTCGTTTAGTGAACCGTCAGAATTTGTAAACGACTCACTATAGGGCGGCCGGGAATTCGTCGACTG
GATCCGGTACCGAGGAGATCTGCCGCCGCGATCGCC
ATGGAGGCGGTGGTGTTCGTCTTCTCTCTCCTCGATTGTTGCGCGCTCATCTTCTCTCGGTCTACTTC
ATAATTACATTGTCTGATTTAGAATGTGATTACATTAATGCTAGATCATGTTGCTCAAAATTAACAAG
TGGTAATTCCAGAATTGATTGGCCATACCATTGTCACGTATTACTGCTCATGTCATTGCCTGGTTC
ATCTTCTTCTCAACTTACCTGTTGCCACTTGAATATATATCGTATGATCTTAGCTTTGATAAATGAC
ACGCGTACGCGGCCGCTCGAG - GFP Tag - GTTTAAAC
```

Protein Sequence: >Peptide sequence encoded by RG235562
Blue=ORF Red=Cloning site Green=Tag(s)

```
MEAVVVFVSLDCCALIFLSVYFIITLSDLECDYINARSCSKLNKWWIPELIGHTIVTVLLLSLHWF
IFLLNLPVATWNIYRMILALIND
TRTRPLEMESDESGLPAMEIECRITGTLNGVEFELVGGEGTPEQGRMTNKMKSTKGALTFSPYLLSHV
MGYGFYHFGTYPSGYENPFLHAINNGGYNTRIEKYEDGGVLHVSFSYRYEAGRVI GDFKVMGTGFPEP
SVIFTDKIIRS NATVEHLHPMGDNDLDGSFTRFSLRDGGYSSVVD SHMHFKSAIHP SILQNGGPMFA
FRRVEEDHSNTELGIVEYQHAFKTPDADAGEERV
```

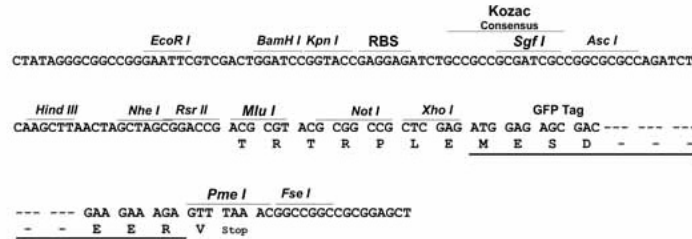
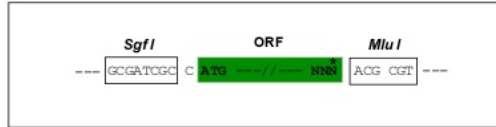
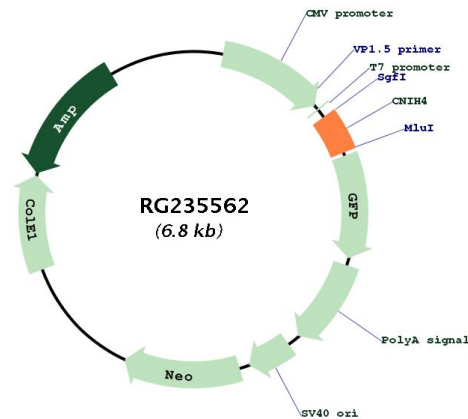
Restriction Sites: SgfI-MluI



[View online »](#)

Cloning Scheme:

Cloning sites used for ORF Shutting:


Plasmid Map:

ACCN: NM_001277197

ORF Size: 276 bp

OTI Disclaimer: The molecular sequence of this clone aligns with the gene accession number as a point of reference only. However, individual transcript sequences of the same gene can differ through naturally occurring variations (e.g. polymorphisms), each with its own valid existence. This clone is substantially in agreement with the reference, but a complete review of all prevailing variants is recommended prior to use. [More info](#)

OTI Annotation:	This clone was engineered to express the complete ORF with an expression tag. Expression varies depending on the nature of the gene.
Components:	The ORF clone is ion-exchange column purified and shipped in a 2D barcoded Matrix tube containing 10ug of transfection-ready, dried plasmid DNA (reconstitute with 100 ul of water).
RefSeq:	NM_001277197.2
RefSeq Size:	1496 bp
RefSeq ORF:	279 bp
Locus ID:	29097
UniProt ID:	Q9P003
Cytogenetics:	1q42.11
Protein Families:	Transmembrane
MW:	11.1 kDa
Gene Summary:	Involved in G protein-coupled receptors (GPCRs) trafficking from the endoplasmic reticulum to the cell surface; it promotes the exit of GPCRs from the early secretory pathway, likely through interaction with the COPII machinery (PubMed:24405750).[UniProtKB/Swiss-Prot Function]