

Product datasheet for **RG235559**

OCIAD2 (NM_001286774) Human Tagged ORF Clone

Product data:

Product Type: Expression Plasmids
Product Name: OCIAD2 (NM_001286774) Human Tagged ORF Clone
Tag: TurboGFP
Symbol: OCIAD2
Mammalian Cell Selection: Neomycin
Vector: pCMV6-AC-GFP (PS100010)
E. coli Selection: Ampicillin (100 ug/mL)
ORF Nucleotide Sequence: >RG235559 representing NM_001286774.
Blue=ORF Red=Cloning site Green=Tag(s)

```
GCTCGTTTAGTGAACCGTCAGAATTTTGTAAACGACTCACTATAGGGCGCCGGAATTCGTCGACTG
GATCCGGTACCGAGGAGATCTGCCGCCGCGATCGCC
ATGCTTGTCAACCAGGGACTAGTCTACCAAGGTTATTTGGCAGCTAATTCTAGATTTGGATCATTGCC
AAAGTTGCACTTGTGGTCTCTTGGGATTTGGCCTTGAAAGGTATCATACATAGGAGTATGCCAGAGT
AAATCCATTTTTTTGAAGATCAGCTCCGTGGGCTGGTTTTGGTCCACAGCATAACAGGCCTGCCTC
CTTACCTGTGAGGAATGCAAAATAAAGCATGGATTAAGTGAGAAGGGAGACTCTCAGCCTCAGCTTC
ACGCGTACGCGGCCGCTCGAG - GFP Tag - GTTTAAAC
```

Protein Sequence: >Peptide sequence encoded by RG235559
Blue=ORF Red=Cloning site Green=Tag(s)

```
MLVTQGLVYQGYLAANSRFGSLPKVALAGLLGFGLGKVSYIGVCQSKFHFFEDQLRGAGFGPQHNHCL
LTCEECKIKHGLSEKGDSPSAS
TRTRPLEMESDESGLPAMEIECRITGTLNGVEFELVGGEGTPEQGRMTNKMSTKGALTFSPYLLSHV
MGYGFYHFGTYPSGYENPFLHAINNGGYNTRIEKYEDGGVLHVSFSYRYEAGRVIGDFKVMGTGFPED
SVIFTDKIIRSNATVEHLHPMGDNDLDGSFTRTFSLRDGGYSSVVDSHMHFKSAIHP SILQNGGPMFA
FRRVEEDHSNTELGIVEYQHAFKTPDADAGEERV
```

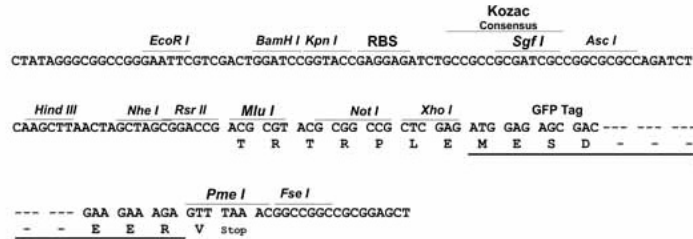
Restriction Sites: Sgfl-Mlul



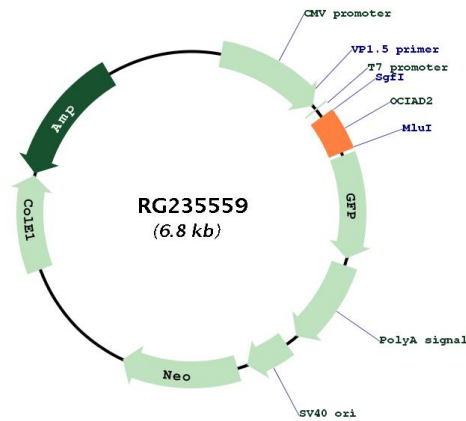
[View online »](#)

Cloning Scheme:

Cloning sites used for ORF Shutting:



Plasmid Map:



ACCN: NM_001286774
 ORF Size: 276 bp

OTI Disclaimer:	The molecular sequence of this clone aligns with the gene accession number as a point of reference only. However, individual transcript sequences of the same gene can differ through naturally occurring variations (e.g. polymorphisms), each with its own valid existence. This clone is substantially in agreement with the reference, but a complete review of all prevailing variants is recommended prior to use. More info
OTI Annotation:	This clone was engineered to express the complete ORF with an expression tag. Expression varies depending on the nature of the gene.
Components:	The ORF clone is ion-exchange column purified and shipped in a 2D barcoded Matrix tube containing 10ug of transfection-ready, dried plasmid DNA (reconstitute with 100 ul of water).
RefSeq:	NM_001286774.1 , NP_001273703.1
RefSeq Size:	705 bp
RefSeq ORF:	279 bp
Locus ID:	132299
Cytogenetics:	4p11
MW:	10.4 kDa