

## Product datasheet for **RG235546**

### Apc11 (ANAPC11) (NM\_001289419) Human Tagged ORF Clone

#### Product data:

**Product Type:** Expression Plasmids  
**Product Name:** Apc11 (ANAPC11) (NM\_001289419) Human Tagged ORF Clone  
**Tag:** TurboGFP  
**Symbol:** ANAPC11  
**Synonyms:** APC11; Apc11p; HSPC214  
**Mammalian Cell Selection:** Neomycin  
**Vector:** pCMV6-AC-GFP (PS100010)  
**E. coli Selection:** Ampicillin (100 ug/mL)  
**ORF Nucleotide Sequence:** >RG235546 representing NM\_001289419.  
Blue=ORF Red=Cloning site Green=Tag(s)

GCTCGTTTAGTGAACCGTCAGAATTTTGTAAACGACTCACTATAGGGCGGCCGGGAATTCGTCGACTG  
 GATCCGGTACCGAGGAGATCTGCCGCCGCGATCGCC  
ATGAGAACTGTGGCATCTGCAGGATGGCATTAAACGGATGCTGCCCTGACTGTGAGTGTCCCTCCATG  
CTGTCTGAGCGGCCCGACTGCAAGGTGCCCGGCAGCACTGCCCGTGGTGTGGGGCCAGTGCTCCCA  
CTGCTTCCACATGCATTGCATCCTCAAGTGGCTGCACGCACAGCAGGTGCAGCAGCACTGCCCATGTG  
CCGCCAGGAATGGAAGTCAAGGAGTGAGGCCGACCTGGCTCTCGCTGGAGGGGCATCC  
ACGCGTACGCGGCCGCTCGAG - GFP Tag - GTTTAAAC

**Protein Sequence:** >Peptide sequence encoded by RG235546  
Blue=ORF Red=Cloning site Green=Tag(s)

MRTVASAGWHLTDAALTVSVPSMLSERPRLQGARRRLPAGVGPVLP LLPHALHPQVAARTAGAAALPHV  
PPGMEVQGV RPD LALAGGAS  
TRTRPLEMESDESGLPAMEIECRITGTLNGVEFELVGGEGTPEQGRMTNKMKSTKGALTFSPYLLSHV  
MGYGFYHFGTYPSGYENPFLHAINNGGYNTRIEKYEDGGVLHVSFSYRYEAGRVIGDFKVMGTGFPE  
SVIFTDKIIRSNATVEHLHPMGDNDLDGSFTRFSLRDGGYSSVVD SHMHFKSAIHPSILQNGGPMFA  
FRRVEEDHSNTELGIVEYQHAFKTPDADAGEERV

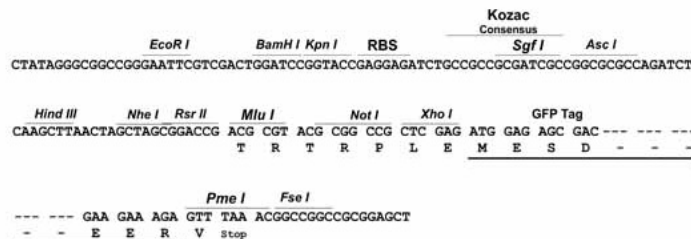
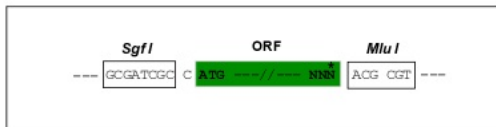
**Restriction Sites:** SgfI-MluI



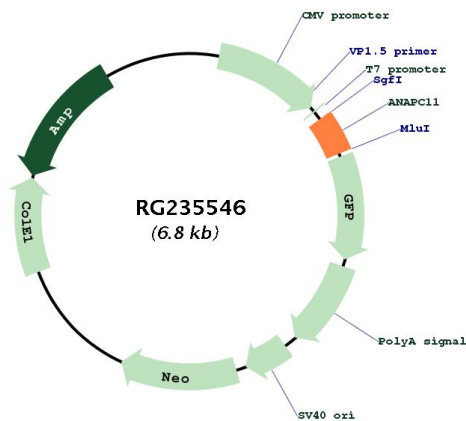
[View online »](#)

Cloning Scheme:

Cloning sites used for ORF Shutting:



Plasmid Map:



ACCN: NM\_001289419

ORF Size: 267 bp

OTI Disclaimer: The molecular sequence of this clone aligns with the gene accession number as a point of reference only. However, individual transcript sequences of the same gene can differ through naturally occurring variations (e.g. polymorphisms), each with its own valid existence. This clone is substantially in agreement with the reference, but a complete review of all prevailing variants is recommended prior to use. [More info](#)

<b>OTI Annotation:</b>	This clone was engineered to express the complete ORF with an expression tag. Expression varies depending on the nature of the gene.
<b>Components:</b>	The ORF clone is ion-exchange column purified and shipped in a 2D barcoded Matrix tube containing 10ug of transfection-ready, dried plasmid DNA (reconstitute with 100 ul of water).
<b>RefSeq:</b>	<a href="#">NM_001289419.1</a> , <a href="#">NP_001276348.1</a>
<b>RefSeq Size:</b>	964 bp
<b>RefSeq ORF:</b>	270 bp
<b>Locus ID:</b>	51529
<b>Cytogenetics:</b>	17q25.3
<b>Protein Families:</b>	Druggable Genome
<b>Protein Pathways:</b>	Cell cycle, Oocyte meiosis, Progesterone-mediated oocyte maturation, Ubiquitin mediated proteolysis
<b>MW:</b>	9.5 kDa
<b>Gene Summary:</b>	Together with the cullin protein ANAPC2, constitutes the catalytic component of the anaphase promoting complex/cyclosome (APC/C), a cell cycle-regulated E3 ubiquitin ligase that controls progression through mitosis and the G1 phase of the cell cycle. The APC/C complex acts by mediating ubiquitination and subsequent degradation of target proteins: it mainly mediates the formation of 'Lys-11'-linked polyubiquitin chains and, to a lower extent, the formation of 'Lys-48'- and 'Lys-63'-linked polyubiquitin chains. May recruit the E2 ubiquitin-conjugating enzymes to the complex.[UniProtKB/Swiss-Prot Function]