

Product datasheet for **RG235520**

Apc11 (ANAPC11) (NM_001289415) Human Tagged ORF Clone

Product data:

Product Type: Expression Plasmids
Product Name: Apc11 (ANAPC11) (NM_001289415) Human Tagged ORF Clone
Tag: TurboGFP
Symbol: ANAPC11
Synonyms: APC11; Apc11p; HSPC214
Mammalian Cell Selection: Neomycin
Vector: pCMV6-AC-GFP (PS100010)
E. coli Selection: Ampicillin (100 ug/mL)
ORF Nucleotide Sequence: >RG235520 representing NM_001289415.
Blue=ORF Red=Cloning site Green=Tag(s)

```
GCTCGTTTAGTGAACCGTCAGAATTTGTAAACGACTCACTATAGGGCGCCGGGAATTCGTCGACTG
GATCCGGTACCGAGGAGATCTGCCGCCGCGATCGCC
ATGAAGGTGAAGATTAAGTGCTGGAACGGCGTGGCCACTTGGCTCTGGGTGGCCAACGATGAGAACTGT
GGCATCTGCAGGATGGCATTAAACGGATGCTGCCCTGACTGCAAGGTGCCGCGCAGCAGCTGCCCGCTG
GTGTGGGGCCAGTGCTCCACTGCTTCCACATGCATTGCATCCTCAAGTGGCTGCACGCACAGCAGGTG
CAGCAGCACTGCCCCATGTGCCGCCAGGAATGGAAGTTCAAGGAG
ACGCGTACGCGGCCGCTCGAG - GFP Tag - GTTTAAAC
```

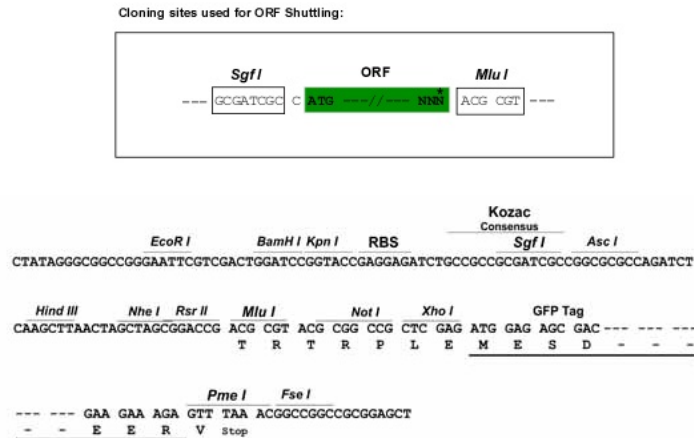
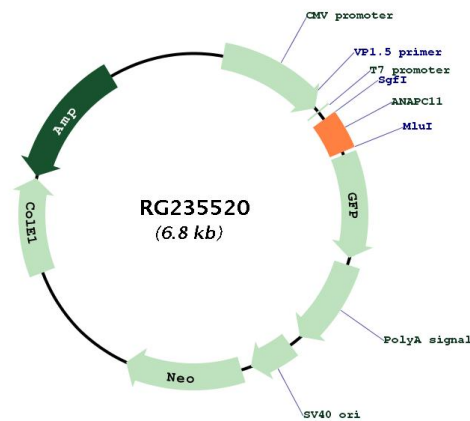
Protein Sequence: >Peptide sequence encoded by RG235520
Blue=ORF Red=Cloning site Green=Tag(s)

```
MKVKIKCWNGVATWLWVANDENCGICRMAFNCCPDCKVPGDDCPLVWGQCSHCFFMHCILKWLHAQQV
QQHCPMCRQEWKFKE
TRTRPLEMESDESGLPAMEIECRITGTLNGVEFELVGGEGTPEQGRMTNKMSTKGALTFSPYLLSHV
MGYGFYHFGTYPSGYENPFLHAINNGYTNTRIEKYEDGGVLHVSFSYRYEAGRVIGDFKVMGTGFPEP
SVIFTDKIIRSNAIVEHLHPMGDNDLDGSFTRFSLRDGGYSSVVDSHMHFKSAIHPSILQNGGPMFA
FRRVEEDHSNTELGIVEYQHAFKTPDADAGEERV
```

Restriction Sites: SgfI-MluI



[View online »](#)

Cloning Scheme:

Plasmid Map:


ACCN: NM_001289415

ORF Size: 252 bp

OTI Disclaimer: The molecular sequence of this clone aligns with the gene accession number as a point of reference only. However, individual transcript sequences of the same gene can differ through naturally occurring variations (e.g. polymorphisms), each with its own valid existence. This clone is substantially in agreement with the reference, but a complete review of all prevailing variants is recommended prior to use. [More info](#)

OTI Annotation:	This clone was engineered to express the complete ORF with an expression tag. Expression varies depending on the nature of the gene.
Components:	The ORF clone is ion-exchange column purified and shipped in a 2D barcoded Matrix tube containing 10ug of transfection-ready, dried plasmid DNA (reconstitute with 100 ul of water).
RefSeq:	NM_001289415.1 , NP_001276344.1
RefSeq Size:	885 bp
RefSeq ORF:	255 bp
Locus ID:	51529
UniProt ID:	Q9NYG5
Cytogenetics:	17q25.3
Protein Families:	Druggable Genome
Protein Pathways:	Cell cycle, Oocyte meiosis, Progesterone-mediated oocyte maturation, Ubiquitin mediated proteolysis
MW:	9.8 kDa
Gene Summary:	Together with the cullin protein ANAPC2, constitutes the catalytic component of the anaphase promoting complex/cyclosome (APC/C), a cell cycle-regulated E3 ubiquitin ligase that controls progression through mitosis and the G1 phase of the cell cycle. The APC/C complex acts by mediating ubiquitination and subsequent degradation of target proteins: it mainly mediates the formation of 'Lys-11'-linked polyubiquitin chains and, to a lower extent, the formation of 'Lys-48'- and 'Lys-63'-linked polyubiquitin chains. May recruit the E2 ubiquitin-conjugating enzymes to the complex.[UniProtKB/Swiss-Prot Function]