

Product datasheet for **RG235514**

ZCCHC10 (NM_001300825) Human Tagged ORF Clone

Product data:

Product Type: Expression Plasmids
Product Name: ZCCHC10 (NM_001300825) Human Tagged ORF Clone
Tag: TurboGFP
Symbol: ZCCHC10
Mammalian Cell Selection: Neomycin
Vector: pCMV6-AC-GFP (PS100010)
E. coli Selection: Ampicillin (100 ug/mL)
ORF Nucleotide Sequence: >RG235514 representing NM_001300825.
 Blue=ORF Red=Cloning site Green=Tag(s)

```
GCTCGTTTAGTGAACCGTCAGAATTTGTAAACGACTCACTATAGGGCGGCCGGAATTCGTCGACTG
GATCCGGTACCGAGGAGATCTGCCGCCCGCATCGCC
ATGCCTGGCCTAAGTGAAGCAAATAAGCAACATGTAAGATGTCAGAAATGCTTGGAAATTTGGACATTGG
ACTTATGAATGCACAGGAAAAAGAAAATACCTACATAGGCCCTCAAGGACAGCAGAACTAAAGAAAGCT
TAAAAGAAAAAGAAAACAGATTATTATTGCAACAAAGGAGCTTTTTTCCCCTCGTGTTCATCAGCAT
TGGAGAAACCAATGTAGAAAGAAAGGCCAAGAAAAAAGGTC
ACGCGTACGCGGCCGCTCGAG - GFP Tag - GTTTAAAC
```

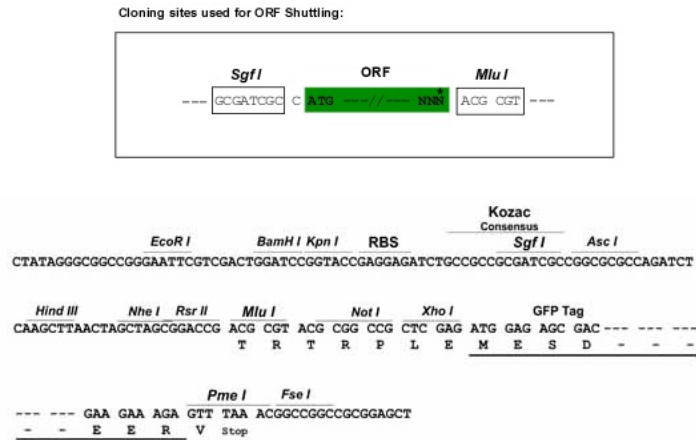
Protein Sequence: >Peptide sequence encoded by RG235514
 Blue=ORF Red=Cloning site Green=Tag(s)

```
MPGLSEANKQHVRQCQKCLEFGHWTYECTGKRKYLHRPSRTAELKKALKEKENRLLLQQRFFPRVYQH
WRNQCRRKKGQEKKV
TRTRPLEMESDESGLPAMEIECRITGTLNGVEFELVGGEGTPEQGRMTNKMSTKGALTFSPYLLSHV
MGYGFYHFGTYPSGYENPFLHAINNGGYTNTRIEKYEDGGVLHVSFSYRYEAGRVIGDFKVMGTGFPE
SVIFTDKIIRSNATVEHLHPMGDNDLDGSFTRTFSLRDGGYSSVVDSHMHFKSAIHPSILQNGGPMFA
FRRVEEDHSNTELGIVEYQHAFKTPDADAGEERV
```

Restriction Sites: SgfI-MluI



[View online »](#)

Cloning Scheme:


ACCN: NM_001300825

ORF Size: 249 bp

OTI Disclaimer: The molecular sequence of this clone aligns with the gene accession number as a point of reference only. However, individual transcript sequences of the same gene can differ through naturally occurring variations (e.g. polymorphisms), each with its own valid existence. This clone is substantially in agreement with the reference, but a complete review of all prevailing variants is recommended prior to use. [More info](#)

OTI Annotation: This clone was engineered to express the complete ORF with an expression tag. Expression varies depending on the nature of the gene.

Components: The ORF clone is ion-exchange column purified and shipped in a 2D barcoded Matrix tube containing 10ug of transfection-ready, dried plasmid DNA (reconstitute with 100 ul of water).

RefSeq: [NM_001300825.1](#), [NP_001287754.1](#)

RefSeq Size: 2320 bp

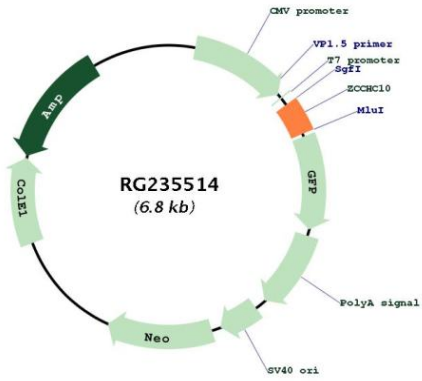
RefSeq ORF: 252 bp

Locus ID: 54819

Cytogenetics: 5q31.1

MW: 10.5 kDa

Product images:



Circular map for RG235514