

Product datasheet for **RG235450**

Cylicin 1 (CYLC1) (NM_001271680) Human Tagged ORF Clone

Product data:

Product Type:	Expression Plasmids
Product Name:	Cylicin 1 (CYLC1) (NM_001271680) Human Tagged ORF Clone
Tag:	TurboGFP
Symbol:	Cylicin 1
Synonyms:	CYCL1
Mammalian Cell Selection:	Neomycin
Vector:	pCMV6-AC-GFP (PS100010)
E. coli Selection:	Ampicillin (100 ug/mL)
ORF Nucleotide Sequence:	>RG235450 representing NM_001271680. Blue=ORF Red=Cloning site Green=Tag(s)

GCTCGTTTAGTGAACCGTCAGAATTTTGAATACGACTCACTATAGGGCGGCCGGAATTCGTCGACTG
 GATCCGGTACCGAGGAGATCTGCCGCC**CGCATCGCC**
 ATGTCTCTTCCAAGGCTAAAAGTAAACATCAGAACATATGATAATTCCATTCCAATCAGTGAATCAAGC
 AGAAAATCATGGAATCAAAACACTTTGCTTTGACATTTCCAAACCACTCCAGAGAGGTACAAATGAT
 AAATCAAGACCTTTGAAATCACAATAACAGTTACTCCTGAAGCACCGTGGATTCATAAGCTGCTT
ACGCGTACGCGGCCGCTCGAG - GFP Tag - GTTTAAAC

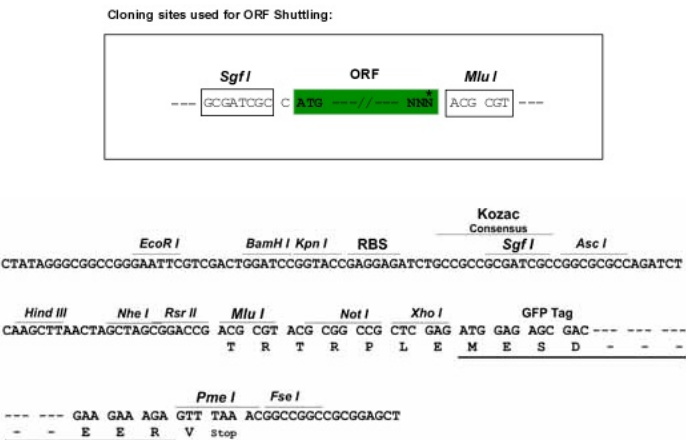
Protein Sequence:	>Peptide sequence encoded by RG235450 Blue=ORF Red=Cloning site Green=Tag(s)
-------------------	---

MSLPRLKVNIRTYDNSIPISESSRKSWNQKHFALTFPKPLQRGTNDKSRPLKSQITVTPEAPWIIHKL
TRTRPLEMESDESGLPAMEIECRITGTLNGVEFELVGGEGTPEQGRMTNKMSTKGALTFSPYLLSHV
 MGYGFYHFGTYPSTYENPFLHAINNGYTNTRIEKYEDGGVLHVSFSYRYEAGRVIGDFKVMGTGFPED
 SVIFTDKIIRSNATVEHLHPMGDNDLGSFTRTFSLRDGGYSSVVDSHMHFKSAIHPSILQNGGPMFA
 FRRVEEDHSNTELGIVEYQHAFKTPDADAGEERV

Restriction Sites:	SgfI-MluI
--------------------	-----------


[View online »](#)

Cloning Scheme:

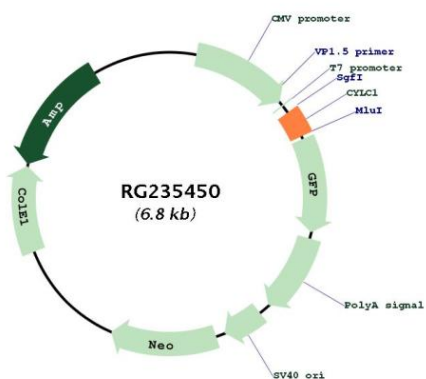


ACCN:	NM_001271680
ORF Size:	207 bp
OTI Disclaimer:	The molecular sequence of this clone aligns with the gene accession number as a point of reference only. However, individual transcript sequences of the same gene can differ through naturally occurring variations (e.g. polymorphisms), each with its own valid existence. This clone is substantially in agreement with the reference, but a complete review of all prevailing variants is recommended prior to use. More info
OTI Annotation:	This clone was engineered to express the complete ORF with an expression tag. Expression varies depending on the nature of the gene.
Components:	The ORF clone is ion-exchange column purified and shipped in a 2D barcoded Matrix tube containing 10ug of transfection-ready, dried plasmid DNA (reconstitute with 100 ul of water).
Note:	Plasmids are not sterile. For experiments where strict sterility is required, filtration with 0.22um filter is required.
RefSeq:	NM_001271680.1 , NP_001258609.1
RefSeq Size:	394 bp
RefSeq ORF:	207 bp
Locus ID:	1538
Cytogenetics:	Xq21.1

MW: 8.3 kDa

Gene Summary: This gene encodes a sperm head cytoskeletal protein. The encoded protein is associated with the calyx of spermatozoa and spermatids. Alternative splicing results in multiple transcript variants. [provided by RefSeq, Nov 2012]

Product images:



Circular map for RG235450