

## Product datasheet for **RG235441**

### Chloride Channel 5 (CLCN5) (NM\_001272102) Human Tagged ORF Clone

#### Product data:

**Product Type:** Expression Plasmids  
**Product Name:** Chloride Channel 5 (CLCN5) (NM\_001272102) Human Tagged ORF Clone  
**Tag:** TurboGFP  
**Symbol:** CLCN5  
**Synonyms:** CIC-5; CLC5; CLCK2; DENT1; DENTS; hCIC-K2; NPHL1; NPHL2; XLRH; XRN  
**Mammalian Cell Selection:** Neomycin  
**Vector:** pCMV6-AC-GFP (PS100010)  
**E. coli Selection:** Ampicillin (100 ug/mL)  
**ORF Nucleotide Sequence:** >RG235441 representing NM\_001272102.  
 Blue=ORF Red=Cloning site Green=Tag(s)

```
GCTCGTTTAGTGAACCGTCAGAATTTGTAAACGACTCACTATAGGGCGCCGGGAATTCGTCGACTG
GATCCGGTACCGAGGAGATCTGCCGCCGCGATCGCC
ATGGCCATGTGGCAGGGTGCCATGGATAACAGAGGCTTTCAGCAGGGGAGTTTTAGTAGCTTCCAGAAC
AGCTCCAGTGATGAAGACCTGATGGACATTCAGCAACCGCTATGGATTCTCCATGAGAGATGATGTT
CCTCCCTTAGACCGAGAAGTAGGAGGTATCATTATTGGTGATGATAATTTATCT
ACGCGTACGCGGCCGCTCGAG - GFP Tag - GTTTAAAC
```

**Protein Sequence:** >Peptide sequence encoded by RG235441  
 Blue=ORF Red=Cloning site Green=Tag(s)

```
MAMWQGAMDNRFQQGSFSSFNSSDEDLMDIPATAMDFSMRDDVPPLDREVGIIIGDDNLS
TRTRPLEMESDESGLPAMEIECRITGTLNGVEFELVGGEGTPEQGRMTNKMSTKGALTFSPYLLSHV
MGYGFYHFGTYPSTYENPFLHAINNGYNTRIEKYEDGGVLHVSFSYRYEAGRVIGDFKVMGTGFPED
SVIFTDKIIRSNATVEHLHPMGDNDLGSFTRTFSLRDGGYSSVVDSHMHFKSAIHPSILQNGGPMFA
FRRVEEDHSNTELGIVEYQHAFKTPDADAGEERV
```

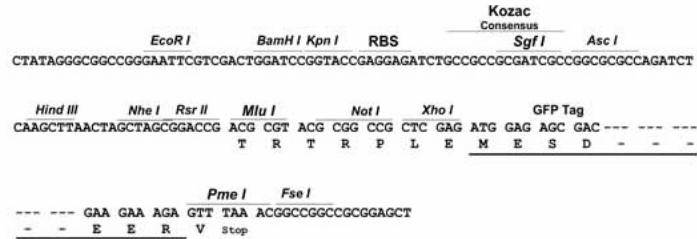
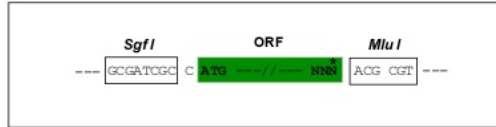
**Restriction Sites:** SgfI-MluI



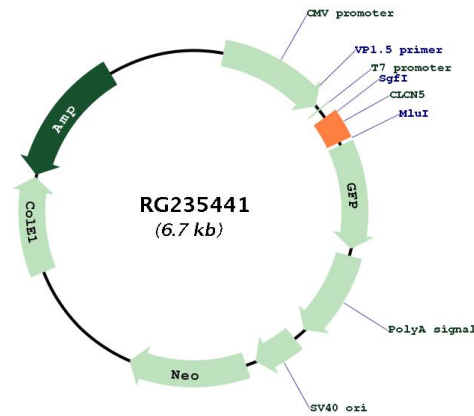
[View online »](#)

## Cloning Scheme:

Cloning sites used for ORF Shutting:



## Plasmid Map:



ACCN: NM\_001272102

ORF Size: 192 bp

<b>OTI Disclaimer:</b>	The molecular sequence of this clone aligns with the gene accession number as a point of reference only. However, individual transcript sequences of the same gene can differ through naturally occurring variations (e.g. polymorphisms), each with its own valid existence. This clone is substantially in agreement with the reference, but a complete review of all prevailing variants is recommended prior to use. <a href="#">More info</a>
<b>OTI Annotation:</b>	This clone was engineered to express the complete ORF with an expression tag. Expression varies depending on the nature of the gene.
<b>Components:</b>	The ORF clone is ion-exchange column purified and shipped in a 2D barcoded Matrix tube containing 10ug of transfection-ready, dried plasmid DNA (reconstitute with 100 ul of water).
<b>RefSeq:</b>	<a href="#">NM_001272102.2</a>
<b>RefSeq Size:</b>	640 bp
<b>RefSeq ORF:</b>	195 bp
<b>Locus ID:</b>	1184
<b>Cytogenetics:</b>	Xp11.23
<b>Protein Families:</b>	Druggable Genome, Ion Channels: Other, Transmembrane
<b>MW:</b>	7.5 kDa
<b>Gene Summary:</b>	This gene encodes a member of the CIC family of chloride ion channels and ion transporters. The encoded protein is primarily localized to endosomal membranes and may function to facilitate albumin uptake by the renal proximal tubule. Mutations in this gene have been found in Dent disease and renal tubular disorders complicated by nephrolithiasis. Alternatively spliced transcript variants have been found for this gene. [provided by RefSeq, Jan 2013]