

Product datasheet for **RG235440**

Macrophage Inflammatory Protein 1 beta (CCL4L2) (NM_001291470) Human Tagged ORF Clone

Product data:

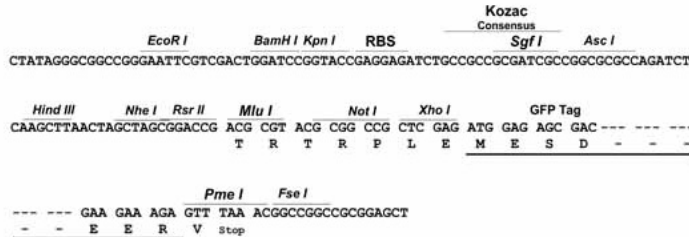
Product Type:	Expression Plasmids
Product Name:	Macrophage Inflammatory Protein 1 beta (CCL4L2) (NM_001291470) Human Tagged ORF Clone
Tag:	TurboGFP
Symbol:	Macrophage Inflammatory Protein 1 beta
Synonyms:	AT744.2; CCL4L; SCYA4L; SCYQ4L2
Mammalian Cell Selection:	Neomycin
Vector:	pCMV6-AC-GFP (PS100010)
E. coli Selection:	Ampicillin (100 ug/mL)
ORF Nucleotide Sequence:	>RG235440 representing NM_001291470. Blue=ORF Red=Cloning site Green=Tag(s) GCTCGTTTAGTGAACCGTCAGAATTTTGTAAACGACTCACTATAGGGCGCCGGGAATTCGTCGACTG GATCCGGTACCGAGGAGATCTGCCGCC GCGATCGCC ATGAAGCTCTGCGTGACTGTCCTGTCTCTCCTCGTGCTAGTAGCTGCCTTCTGCTCTCTAGCACTCTCA GCACCAATGGGCTCAGACCCTCCACCGCTGCTGTTTTCTTACACCGCGAGGAAGTTCTCGCAAC TTTGTGGTAGATTACTATGAGACCAGCAGCCTCTGCTCCAGCCAGCTGTGGTG ACGCGT ACGCGGCCGCTCGAG - GFP Tag - GTTTAAAC
Protein Sequence:	>Peptide sequence encoded by RG235440 Blue=ORF Red=Cloning site Green=Tag(s) MKLCVTVLSLLVLVAAFCSLALSAPMGSDPPTACCFSYTARKLPRNFVVDYYETSSLCSQPAVV TR TRPLEMESDESGLPAMEIECRITGTLNGVEFELVGGEGTPEQGRMTNKMSTKGALTFSPYLLSHV MGYGFYHFGTYPSGYENPFLHAINNGGYNTRIEKYEDGGVLHVSFSYRYEAGRVIGDFKVMGTGFPED SVIFTDKIIRSNATVEHLHPMGDNDLDGSFTRTFSLRDGGYSSVVDSHMHFKSAIHP SILQNGGPMFA FRRVEEDHSNTELGIVEYQHAFKTPDADAGEERV
Restriction Sites:	Sgfl-MluI



[View online »](#)

Cloning Scheme:

Cloning sites used for ORF Shuttling:



ACCN: NM_001291470

ORF Size: 192 bp

OTI Disclaimer: The molecular sequence of this clone aligns with the gene accession number as a point of reference only. However, individual transcript sequences of the same gene can differ through naturally occurring variations (e.g. polymorphisms), each with its own valid existence. This clone is substantially in agreement with the reference, but a complete review of all prevailing variants is recommended prior to use. [More info](#)

OTI Annotation: This clone was engineered to express the complete ORF with an expression tag. Expression varies depending on the nature of the gene.

Components: The ORF clone is ion-exchange column purified and shipped in a 2D barcoded Matrix tube containing 10ug of transfection-ready, dried plasmid DNA (reconstitute with 100 ul of water).

RefSeq: [NM_001291470.2](#)

RefSeq Size: 1258 bp

RefSeq ORF: 195 bp

Locus ID: 9560

UniProt ID: [Q8NHW4](#)

Cytogenetics: 17q12

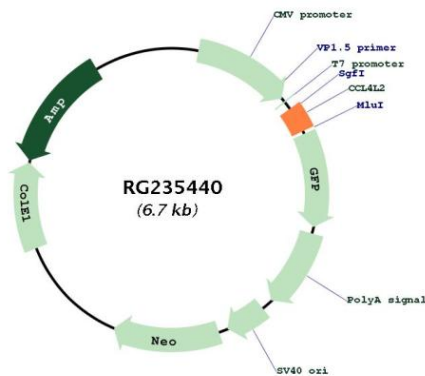
Protein Families: Druggable Genome, Transmembrane

Protein Pathways: Chemokine signaling pathway, Cytokine-cytokine receptor interaction, Cytosolic DNA-sensing pathway

MW: 7.3 kDa

Gene Summary: This gene is one of several cytokine genes that are clustered on the q-arm of chromosome 17. Cytokines are a family of secreted proteins that function in inflammatory and immunoregulatory processes. The protein encoded by this family member is similar to the chemokine (C-C motif) ligand 4 product, which inhibits HIV entry by binding to the cellular receptor CCR5. The copy number of this gene varies among individuals, where most individuals have one to five copies. This gene copy contains a non-consensus splice acceptor site at the 3' terminal exon found in other highly similar gene copies, and it thus uses other alternative splice sites for the 3' terminal exon, resulting in multiple transcript variants. [provided by RefSeq, Apr 2014]

Product images:



Circular map for RG235440