

## Product datasheet for **RG235434**

### **DYNLRB1 (NM\_001281728) Human Tagged ORF Clone**

#### Product data:

**Product Type:** Expression Plasmids  
**Product Name:** DYNLRB1 (NM\_001281728) Human Tagged ORF Clone  
**Tag:** TurboGFP  
**Symbol:** DYNLRB1  
**Synonyms:** BITH; BLP; DNCL2A; DNLC2A; ROBLD1  
**Mammalian Cell Selection:** Neomycin  
**Vector:** pCMV6-AC-GFP (PS100010)  
**E. coli Selection:** Ampicillin (100 ug/mL)  
**ORF Nucleotide Sequence:** >RG235434 representing NM\_001281728.  
 Blue=ORF Red=Cloning site Green=Tag(s)

```
GCTCGTTTAGTGAACCGTCAGAATTTTGTAAACGACTCACTATAGGGCGCCGGGAATTCGTCGACTG
GATCCGGTACCGAGGAGATCTGCCGCCGCGATCGCC
ATGGACAACCCACCACCAGTATGCCAGCCTCATGCACAGTTTCCTGAAGGCACGGAGCACC
GTGCGTGACATCGACCCCGAAGCAGATCTCACCTCCTCGAATTCGCTCCAAGAAAAATGAAATTATG
GTTGCACCAGATAAAGACTATTTCTGATTGTGATTGAGAATCCAACCGAA
ACGCGTACGCGGCCGCTCGAG - GFP Tag - GTTTAAAC
```

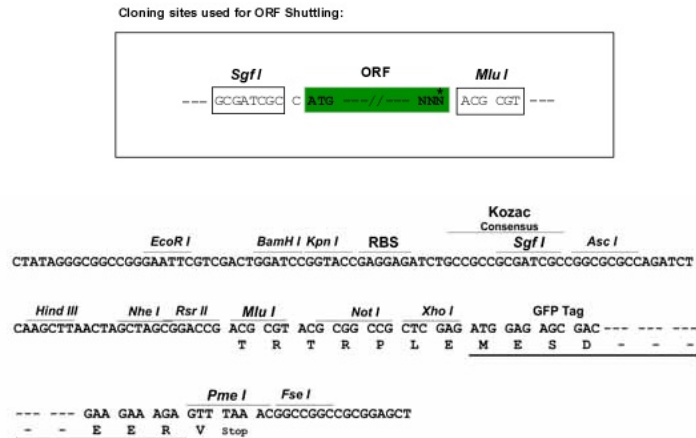
**Protein Sequence:** >Peptide sequence encoded by RG235434  
 Blue=ORF Red=Cloning site Green=Tag(s)

```
MDNPTTQYASLMHSFILKARSTVRDIDPQNDLTLRIRSKKNEIMVAPDKDYFLIVIQNPTE
TRTRPLEMESDESGLPAMEIECRITGTLNGVEFELVGGEGTPEQGRMTNKMSTKGALTFSPYLLSHV
MGYGFYHFGTYPSTYENPFLHAINNGYNTRIEKYEDGGVLHVSFSYRYEAGRVIGDFKVMGTGFPED
SVIFTDKIIRSNATVEHLHPMGDNDLGSFTRTFSLRDGGYSSVVDSHMHFKSAIHPSILQNGGPMFA
FRRVEEDHSNTELGIVEYQHAFKTPDADAGEERV
```

**Restriction Sites:** SgfI-MluI



[View online »](#)

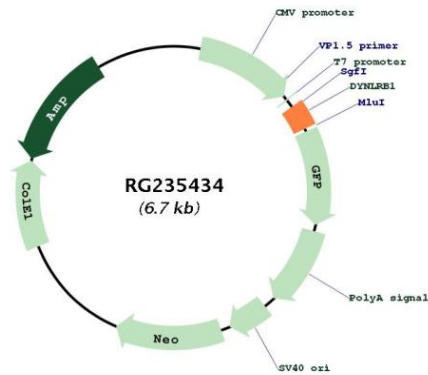
**Cloning Scheme:**


- ACCN:** NM\_001281728
- ORF Size:** 189 bp
- OTI Disclaimer:** The molecular sequence of this clone aligns with the gene accession number as a point of reference only. However, individual transcript sequences of the same gene can differ through naturally occurring variations (e.g. polymorphisms), each with its own valid existence. This clone is substantially in agreement with the reference, but a complete review of all prevailing variants is recommended prior to use. [More info](#)
- OTI Annotation:** This clone was engineered to express the complete ORF with an expression tag. Expression varies depending on the nature of the gene.
- Components:** The ORF clone is ion-exchange column purified and shipped in a 2D barcoded Matrix tube containing 10ug of transfection-ready, dried plasmid DNA (reconstitute with 100 ul of water).
- RefSeq:** [NM\\_001281728.1](#), [NP\\_001268657.1](#)
- RefSeq Size:** 792 bp
- RefSeq ORF:** 192 bp
- Locus ID:** 83658
- UniProt ID:** [Q9NP97](#)
- Cytogenetics:** 20q11.22

**MW:** 7.8 kDa

**Gene Summary:** This gene is a member of the roadblock dynein light chain family. The encoded cytoplasmic protein is capable of binding intermediate chain proteins, interacts with transforming growth factor-beta, and has been implicated in the regulation of actin modulating proteins. Upregulation of this gene has been associated with hepatocellular carcinomas, suggesting that this gene may be involved in tumor progression. Alternative splicing results in multiple transcript variants. Pseudogenes of this gene have been defined on chromosomes 12 and 18. [provided by RefSeq, Aug 2013]

**Product images:**



Circular map for RG235434