

Product datasheet for **RG235427**

MT1HL1 (NM_001276687) Human Tagged ORF Clone

Product data:

Product Type: Expression Plasmids
Product Name: MT1HL1 (NM_001276687) Human Tagged ORF Clone
Tag: TurboGFP
Symbol: MT1HL1
Synonyms: MT1P2
Mammalian Cell Selection: Neomycin
Vector: pCMV6-AC-GFP (PS100010)
E. coli Selection: Ampicillin (100 ug/mL)
ORF Nucleotide Sequence: >RG235427 representing NM_001276687.
 Blue=ORF Red=Cloning site Green=Tag(s)

```
GCTCGTTTAGTGAACCGTCAGAATTTTGTAAACGACTCACTATAGGGCGCCGGGAATTCGTCGACTG
GATCCGGTACCGAGGAGATCTGCCGCCGCGATCGCC
ATGGACCCCAACTGCTCCTGCGCCGCTGGAGGCTCCTACGCCTGCGCCGGCTCCTGCAAGTGCAAAAAG
TGCAAATGCACCTCCTGCAAGAAGAGCTGCTGCTCCTGTTGCCCCCTGGGCTGTGCCAAGTGTGCCCAG
GGCTGCATCCGCAAAGGGGCTTCGAAAAGTGCAGCTGCTGTGCC
ACGCGTACGCGGCCGCTCGAG - GFP Tag - GTTTAAAC
```

Protein Sequence: >Peptide sequence encoded by RG235427
 Blue=ORF Red=Cloning site Green=Tag(s)

```
MDPNCSCAAGGSYACAGSCKCKKCTCKKSCCSCPLGCAKCAQGCIRKGASEKSCCA
TRTRPLEMESDESGLPAMEIECRITGTLNGVEFELVGGEGTPEQGRMTNKMSTKGALTFSPYLLSHV
MGYGFYHFGTYPSTYENPFLHAINNGYNTRIEKYEDGGVLHVSFSYRYEAGRVIGDFKVMGTGFPED
SVIFTDKIIRSNATVEHLHPMGDNDLGSFTRTFSLRDGGYSSVVDSHMHFKSAIHPSILQNGGPMFA
FRRVEEDHSNTELGIVEYQHAFKTPDADAGEERV
```

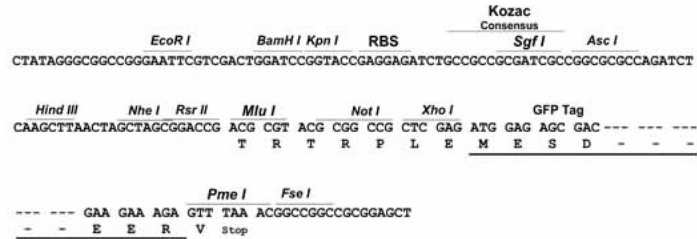
Restriction Sites: SgfI-MluI



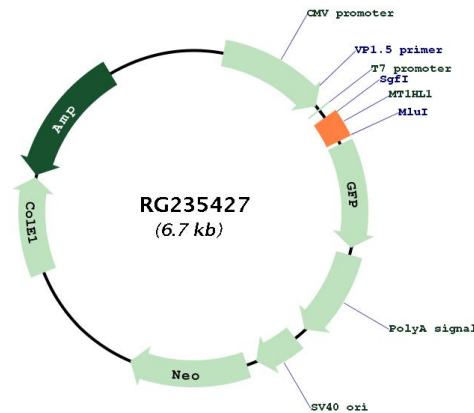
[View online »](#)

Cloning Scheme:

Cloning sites used for ORF Shutting:



Plasmid Map:



ACCN: NM_001276687

ORF Size: 183 bp

OTI Disclaimer:	The molecular sequence of this clone aligns with the gene accession number as a point of reference only. However, individual transcript sequences of the same gene can differ through naturally occurring variations (e.g. polymorphisms), each with its own valid existence. This clone is substantially in agreement with the reference, but a complete review of all prevailing variants is recommended prior to use. More info
OTI Annotation:	This clone was engineered to express the complete ORF with an expression tag. Expression varies depending on the nature of the gene.
Components:	The ORF clone is ion-exchange column purified and shipped in a 2D barcoded Matrix tube containing 10ug of transfection-ready, dried plasmid DNA (reconstitute with 100 ul of water).
RefSeq:	NM_001276687.2
RefSeq Size:	316 bp
RefSeq ORF:	186 bp
Locus ID:	645745
UniProt ID:	P0DM35
Cytogenetics:	1q43
MW:	6.5 kDa
Gene Summary:	This gene is a retrotransposed gene, compared to MT1H (GeneID:4496). This retrogene is transcribed. It retains a full-length CDS, and is assumed to be translated. Compared to the MT1H product, this protein product differs at three internal amino acids, two of which are at metal-binding sites. [provided by RefSeq, Mar 2013]