

Product datasheet for **RG235424**

GLT28D1 (ALG13) (NM_001257235) Human Tagged ORF Clone

Product data:

Product Type: Expression Plasmids
Product Name: GLT28D1 (ALG13) (NM_001257235) Human Tagged ORF Clone
Tag: TurboGFP
Symbol: ALG13
Synonyms: CDG1S; CXorf45; DEE36; EIEE36; GLT28D1; MDS031; TDRD13; YGL047W
Mammalian Cell Selection: Neomycin
Vector: pCMV6-AC-GFP (PS100010)
E. coli Selection: Ampicillin (100 ug/mL)
ORF Nucleotide Sequence: >RG235424 representing NM_001257235.
 Blue=ORF Red=Cloning site Green=Tag(s)

```
GCTCGTTTAGTGAACCGTCAGAATTTTGTAAACGACTCACTATAGGGCGCCGGGAATTCGTCGACTG
GATCCGGTACCGAGGAGATCTGCCGCCGCGATCGCC
ATGAACAATCATCAGCTGGAAGTGGCAAAGCAGCTACACAAGAGGGTCATCTCTTCTATTGTACCTGC
AGCACGCTTCCTGGGCTGTTACAGTCAATGGACTTATCAACACTGAAATGTTATCCTCCTGGCCAGCCA
GAAAAATTTTCTGCATTTTGGATAAAGTTGTTGGATTACAAAAA
ACGCGTACGCGGCCGCTCGAG - GFP Tag - GTTTAAAC
```

Protein Sequence: >Peptide sequence encoded by RG235424
 Blue=ORF Red=Cloning site Green=Tag(s)

```
MNNHQLELAKQLHKEGHLFYCTCSTLPGLLQSMDSLTKCYPPGQPEKFSAFLDKVVGLQK
TRTRPLEMESDESGLPAMEIECRITGTLNGVEFELVGGEGTPEQGRMTNKMSTKGALTFSPYLLSHV
MGYGFYHFGTYPSTYENPFLHAINNGYTNRIEKYEDGGVLHVSFSYRYEAGRVIGDFKVMGTGFPED
SVIFTDKIIIRSNATVEHLHPMGDNDLGSFTRTFSLRDGGYSSVVDSHMHFKSAIHPSILQNGGPMFA
FRRVEEDHSNTELGIVEYQHAFKTPDADAGEERV
```

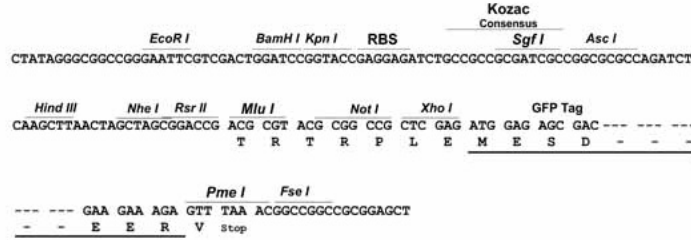
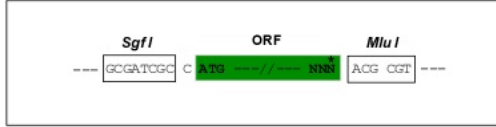
Restriction Sites: SgfI-MluI



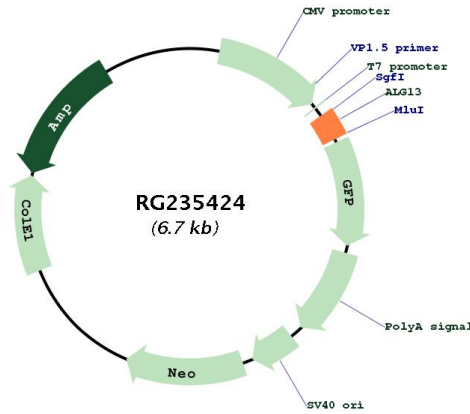
[View online »](#)

Cloning Scheme:

Cloning sites used for ORF Shutting:



Plasmid Map:



ACCN: NM_001257235

ORF Size: 183 bp

OTI Disclaimer:	The molecular sequence of this clone aligns with the gene accession number as a point of reference only. However, individual transcript sequences of the same gene can differ through naturally occurring variations (e.g. polymorphisms), each with its own valid existence. This clone is substantially in agreement with the reference, but a complete review of all prevailing variants is recommended prior to use. More info
OTI Annotation:	This clone was engineered to express the complete ORF with an expression tag. Expression varies depending on the nature of the gene.
Components:	The ORF clone is ion-exchange column purified and shipped in a 2D barcoded Matrix tube containing 10ug of transfection-ready, dried plasmid DNA (reconstitute with 100 ul of water).
RefSeq:	NM_001257235.3
RefSeq Size:	2962 bp
RefSeq ORF:	186 bp
Locus ID:	79868
Cytogenetics:	Xq23
Protein Pathways:	Metabolic pathways, N-Glycan biosynthesis
MW:	7.3 kDa
Gene Summary:	The protein encoded by this gene is a subunit of a bipartite UDP-N-acetylglucosamine transferase. It heterodimerizes with asparagine-linked glycosylation 14 homolog to form a functional UDP-GlcNAc glycosyltransferase that catalyzes the second sugar addition of the highly conserved oligosaccharide precursor in endoplasmic reticulum N-linked glycosylation. Multiple transcript variants encoding different isoforms have been found for this gene. [provided by RefSeq, Dec 2009]