

Product datasheet for **RG235423**

COMMD6 (NM_001287394) Human Tagged ORF Clone

Product data:

Product Type: Expression Plasmids
Product Name: COMMD6 (NM_001287394) Human Tagged ORF Clone
Tag: TurboGFP
Symbol: COMMD6
Synonyms: Acrg
Mammalian Cell Selection: Neomycin
Vector: pCMV6-AC-GFP (PS100010)
E. coli Selection: Ampicillin (100 ug/mL)
ORF Nucleotide Sequence: >RG235423 representing NM_001287394.
Blue=ORF Red=Cloning site Green=Tag(s)

```
GCTCGTTTAGTGAACCGTCAGAATTTTGTAAACGACTCACTATAGGGCGCCGGGAATTCGTCGACTG
GATCCGGTACCGAGGAGATCTGCCGCCGCGATCGCC
ATGGCTGTGAGCTCAGACACTTGCGAGATCTCTTAAGTATCCTTACGTTGCAGTGATGCTAAAAGTGGCA
GATCATTCAAGCAAGTAAAGACCAAGTCTTTGAAATGACGATTCCACAGTTTCAGAATTTCTACAGA
CAGTTCAAGGAAATTGCTGCAGTTATTGAAACGGTG
ACGCGTACGCGGCCGCTCGAG - GFP Tag - GTTTAAAC
```

Protein Sequence: >Peptide sequence encoded by RG235423
Blue=ORF Red=Cloning site Green=Tag(s)

```
MAVSSDTCRSLKYPYVAVMLKVADHSGQVKTCKFEMTIPQFQNFYRQFKEIAAVIETV
TRTRPLEMESDESGLPAMEIECRITGTLNGVEFELVGGEGTPEQGRMTNKMSTKGALTFSPYLLSHV
MGYGFYHFGTYPYSGYENPFLHAINNGYTNRIEKYEDGGVLHVSFSYRYEAGRVIGDFKVMGTGFPED
SVIFTDKIIRSNATVEHLHPMGDNDLGSFTRTFSLRDGGYSSVVDSHMHFKSAIHPSILQNGGPMFA
FRRVEEDHSNTELGIVEYQHAFKTPDADAGEERV
```

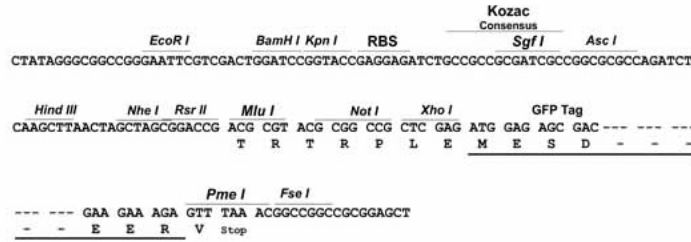
Restriction Sites: Sgfl-Mlul



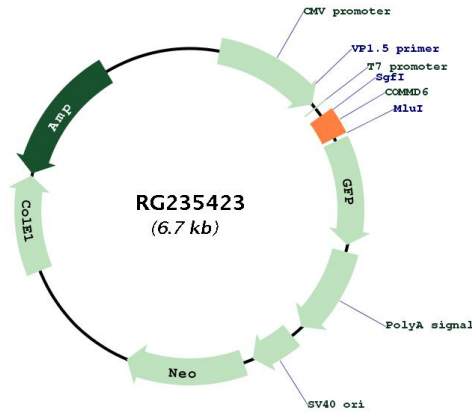
[View online »](#)

Cloning Scheme:

Cloning sites used for ORF Shutting:



Plasmid Map:



ACCN: NM_001287394

ORF Size: 174 bp

OTI Disclaimer:	The molecular sequence of this clone aligns with the gene accession number as a point of reference only. However, individual transcript sequences of the same gene can differ through naturally occurring variations (e.g. polymorphisms), each with its own valid existence. This clone is substantially in agreement with the reference, but a complete review of all prevailing variants is recommended prior to use. More info
OTI Annotation:	This clone was engineered to express the complete ORF with an expression tag. Expression varies depending on the nature of the gene.
Components:	The ORF clone is ion-exchange column purified and shipped in a 2D barcoded Matrix tube containing 10ug of transfection-ready, dried plasmid DNA (reconstitute with 100 ul of water).
RefSeq:	NM_001287394.1 , NP_001274323.1
RefSeq Size:	1691 bp
RefSeq ORF:	177 bp
Locus ID:	170622
Cytogenetics:	13q22.2
MW:	7.1 kDa
Gene Summary:	COMMD6 belongs to a family of NF-kappa-B (see RELA; MIM 164014)-inhibiting proteins characterized by the presence of a COMM domain (see COMMD1; MIM 607238) (de Bie et al., 2006 [PubMed 16573520]).[supplied by OMIM, Mar 2009]