

## Product datasheet for **RG235420**

### **XPNPEP3 (NM\_001204827) Human Tagged ORF Clone**

#### Product data:

**Product Type:** Expression Plasmids  
**Product Name:** XPNPEP3 (NM\_001204827) Human Tagged ORF Clone  
**Tag:** TurboGFP  
**Symbol:** XPNPEP3  
**Synonyms:** APP3; ICP55; NPHPL1  
**Mammalian Cell Selection:** Neomycin  
**Vector:** pCMV6-AC-GFP (PS100010)  
**E. coli Selection:** Ampicillin (100 ug/mL)  
**ORF Nucleotide Sequence:** >RG235420 representing NM\_001204827.  
Blue=ORF Red=Cloning site Green=Tag(s)

```
GCTCGTTTAGTGAACCGTCAGAATTTTGTAAACGACTCACTATAGGGCGCCGGGAATTCGTCGACTG
GATCCGGTACCGAGGAGATCTGCCGCCGCGATCGCC
ATGCCTTGGCTGCTCTCAGCCCCAAGCTGGTTCCCGCTGTAGCAAACGTCGCGGCCTCTCAGGGTCT
TACTTTGTCACCCAAGCTGGAGTGCAGTGGCGTGATCCCATTACTGCAACCTATGTCTCCAGGCTC
AAGCAGTCTTTCTACCAGCTTCCCGAG
ACGCGTACGCGGCCGCTCGAG - GFP Tag - GTTAAAC
```

**Protein Sequence:** >Peptide sequence encoded by RG235420  
Blue=ORF Red=Cloning site Green=Tag(s)

```
MPWLLSAPKLVPAVANVRGLSGSYFVTQAGVQWRDPITLQPMSSRLKQSFYQLPE
TRTRPLEMESDESGLPAMEIECRITGTLNGVEFELVGGEGTPEQGRMTNKMSTKGALTFSPYLLSHV
MGYGFYHFGTYPSTYENPFLHAINNGYTNRIEKYEDGGVLHVSFSYRYEAGRVIGDFKVMGTGFPED
SVIFTDKIIRSNATVEHLHPMGDNDLGSFTRTFSLRDGGYSSVVDSHMHFKSAIHPSILQNGGPMFA
FRRVEEDHSNTELGIVEYQHAFKTPDADAGEERV
```

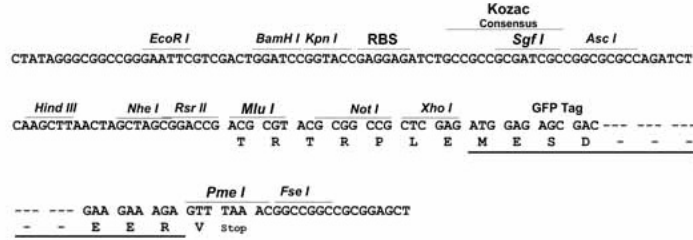
**Restriction Sites:** SgfI-MluI



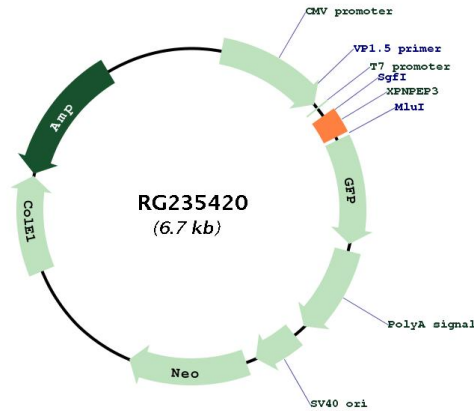
[View online »](#)

**Cloning Scheme:**

Cloning sites used for ORF Shutting:



**Plasmid Map:**



ACCN: NM\_001204827

ORF Size: 165 bp

<b>OTI Disclaimer:</b>	The molecular sequence of this clone aligns with the gene accession number as a point of reference only. However, individual transcript sequences of the same gene can differ through naturally occurring variations (e.g. polymorphisms), each with its own valid existence. This clone is substantially in agreement with the reference, but a complete review of all prevailing variants is recommended prior to use. <a href="#">More info</a>
<b>OTI Annotation:</b>	This clone was engineered to express the complete ORF with an expression tag. Expression varies depending on the nature of the gene.
<b>Components:</b>	The ORF clone is ion-exchange column purified and shipped in a 2D barcoded Matrix tube containing 10ug of transfection-ready, dried plasmid DNA (reconstitute with 100 ul of water).
<b>RefSeq:</b>	<a href="#">NM_001204827.1</a> , <a href="#">NP_001191756.1</a>
<b>RefSeq Size:</b>	1462 bp
<b>RefSeq ORF:</b>	168 bp
<b>Locus ID:</b>	63929
<b>Cytogenetics:</b>	22q13.2
<b>Protein Families:</b>	Druggable Genome, Protease
<b>MW:</b>	6.6 kDa
<b>Gene Summary:</b>	The protein encoded by this gene belongs to the family of X-pro-aminopeptidases that utilize a metal cofactor, and remove the N-terminal amino acid from peptides with a proline residue in the penultimate position. This protein has been shown to localize to the mitochondria of renal cells, and have a role in ciliary function. Mutations in this gene are associated with nephronophthisis-like nephropathy-1. Alternatively spliced transcript variants encoding different isoforms have been noted for this gene, however, expression of some of these isoforms in vivo is not known.[provided by RefSeq, Mar 2011]