

Product datasheet for **RG235417**

MT1F (NM_001301272) Human Tagged ORF Clone

Product data:

Product Type: Expression Plasmids
Product Name: MT1F (NM_001301272) Human Tagged ORF Clone
Tag: TurboGFP
Symbol: MT1F
Synonyms: MT1
Mammalian Cell Selection: Neomycin
Vector: pCMV6-AC-GFP (PS100010)
E. coli Selection: Ampicillin (100 ug/mL)
ORF Nucleotide Sequence: >RG235417 representing NM_001301272.
Blue=ORF **Red**=Cloning site **Green**=Tag(s)

```
GCTCGTTTAGTGAACCGTCAGAATTTTGTAAACGACTCACTATAGGGCGGCCGGGAATTCGTCGACTG
GATCCGGTACCGAGGAGATCTGCCGCCGCGATCGCC
ATGGACCCCAACTGCTCCTGCGCCGCTGGTGTCTCCTGCACCTGCGCTGGTTCCTGCAAGTGCAAAGAG
TGCAAATGCACCTCCTGCAAGAAGAGTGAGTGTGAGGCCATCTCCATGGTCTGGGGCTGTGGC
ACGCGTACGCGGCCGCTCGAG - GFP Tag - GTTTAAAC
```

Protein Sequence: >Peptide sequence encoded by RG235417
Blue=ORF **Red**=Cloning site **Green**=Tag(s)

```
MDPNCSAAGVSCTCAGSCKCKECKTSCKKSECEAISMWGGC
TRTRPLEMESDESGLPAMEIECRITGTLNGVEFELVGGEGTPEQGRMTNKMSTKGALTFSPYLLSHV
MGYGFYHFGTYPSTYENPFLHAINNGGYNTRIEKYEDGGVLHVSFSYRYEAGRVIGDFKVMGTGFPED
SVIFTDKIIRSNATVEHLHPMGDNDLDGSFTRTFSLRDGGYSSVVDSHMHFKSAIHPSILQNGGPMFA
FRRVEEDHSNTELGIVEYQHAFKTPDADAGEERV
```

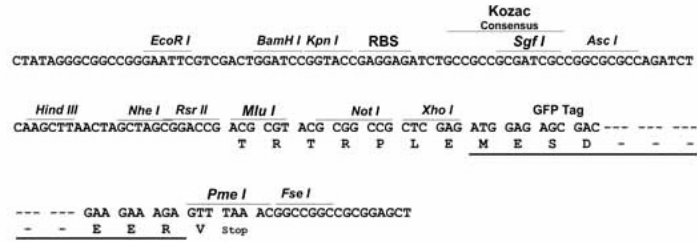
Restriction Sites: SgfI-MluI



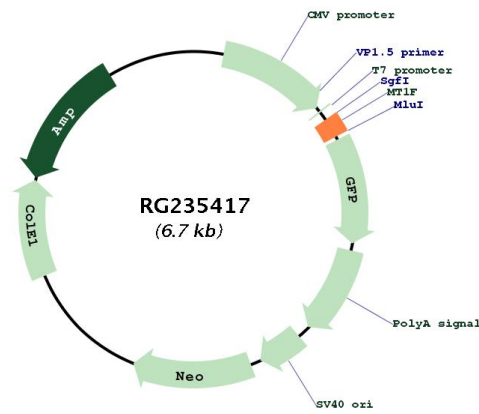
[View online »](#)

Cloning Scheme:

Cloning sites used for ORF Shutting:



Plasmid Map:



ACCN: NM_001301272
 ORF Size: 132 bp

OTI Disclaimer:	The molecular sequence of this clone aligns with the gene accession number as a point of reference only. However, individual transcript sequences of the same gene can differ through naturally occurring variations (e.g. polymorphisms), each with its own valid existence. This clone is substantially in agreement with the reference, but a complete review of all prevailing variants is recommended prior to use. More info
OTI Annotation:	This clone was engineered to express the complete ORF with an expression tag. Expression varies depending on the nature of the gene.
Components:	The ORF clone is ion-exchange column purified and shipped in a 2D barcoded Matrix tube containing 10ug of transfection-ready, dried plasmid DNA (reconstitute with 100 ul of water).
RefSeq:	NM_001301272.1 , NP_001288201.1
RefSeq Size:	498 bp
RefSeq ORF:	135 bp
Locus ID:	4494
UniProt ID:	P04733
Cytogenetics:	16q13
MW:	5 kDa
Gene Summary:	Metallothioneins have a high content of cysteine residues that bind various heavy metals; these proteins are transcriptionally regulated by both heavy metals and glucocorticoids. [UniProtKB/Swiss-Prot Function]