

Product datasheet for **RG235391**

NCOR2 (NM_001206654) Human Tagged ORF Clone

Product data:

Product Type:	Expression Plasmids
Product Name:	NCOR2 (NM_001206654) Human Tagged ORF Clone
Tag:	TurboGFP
Symbol:	NCOR2
Synonyms:	CTG26; N-CoR2; SMAP270; SMRT; SMRTE; SMRTE-tau; TNRC14; TRAC; TRAC-1; TRAC1
Mammalian Cell Selection:	Neomycin
Vector:	pCMV6-AC-GFP (PS100010)
E. coli Selection:	Ampicillin (100 ug/mL)
ORF Nucleotide Sequence:	>RG235391 representing NM_001206654 Red=Cloning site Blue=ORF Green=Tags(s)

TTTTGTAATACGACTCACTATAGGGCGGCCGGAATTCGTCGACTGGATCCGGTACCGAGGAGATCTGCC
GCC**CGATCGCC**

ATGTCGGGATCCACACAGCCTGTGGCACAGACGTGGAGGGCCACTGAGCCCCGCTACCCGCCCCACAGCC
TTTCCTACCCAGTGCAGATCGCCCGGACGCACACGGACGTGGGGCTCCTGGAGTACCAGCACCCTCCCG
CGACTATGCTCCACCTGTCGCCGGTCCATCATCCAGCCCCAGCGGGAGGCCCTCCCTGCTGTCT
GAGTTCAGCCCCGAATGAACGGTCCCAGGAGCTCCACCTGCGGCCAGAGTCCACTCATACTGCCCG
AGCTGGGAAGTCAGAGATGGAGTTCATTGAAAGCAAGCGCCCTCGGCTAGAGCTGCTGCCTGACCCCT
GCTGCGACCGTACCCCTGCTGGCCACGGGCCAGCCTGCGGGATCTGAAGACCTACCAAGGACCGTAGC
CTGACGGGCAAGCTGGAACCGGTGTCTCCCCAGCCCCCGCACACTGACCCTGAGCTGGAGCTGGTGC
CGCCACGGCTGTCCAAGGAGGAGCTGATCCAGAACATGGACCGCGTGGACCGAGAGATCACCATGGTAGA
GCAGCAGATCTCTAAGCTGAAGAAGAAGCAGCAACAGCTGGAGGAGGAGGCTGCCAAGCCGCCCCGAGCCT
GAGAAGCCCGTGTACCGCCGCCATCGAGTCGAAGCACCGCAGCCTGGTGCAGATCATCTACGACGAGA
ACCGGAAGAAGGCTGAAGCTGCACATCGGATTCTGGAAGGCTGGGGCCCCAGGTGGAGCTGCCGCTGTA
CAACCAGCCCTCCGACACCCGGCAGTATCATGAGAACATAAAAATAAACCAGGCGATCGGGAAGAAGCTA
ATCTTGTACTTCAAGAGGAGGAATCACGCTCGGAAACAATGGGAGCAGAAGTTCTGCCAGCGCTATGACC
AGCTCATGGAGGCTGGGAGAAGAAGGTGGAGCGCATCGAGAACAACCCCGGCGGGCCCAAGGAGAG
CAAGGTGCGCGAGTACTACGAGAAGCAGTTCCTGAGATCCGCAAGCAGCGCGAGCTGCAGGAGCGCATG
CAGAGGGTGGCCAGCGGGCAGTGGGTGTCCATGTGCGCCGCCCGCAGCGAGCACGAGGTGTCAGAGA
TCATCGATGGCCTCTCAGAGCAGGAGAACCTGGAGAAGCAGATGCGCCAGCTGGCCGTGATCCCGCCAT
GCTGTACGACGCTGACCAGCAGCGCATCAAGTTCATCAACATGAACGGGCTTATGGCCGACCCCATGAAG
GTGTACAAAGACCGCCAGGTGATGAACATGTGGAGTGAGCAGGAGAAGGAGACCTCCGGGAGAAGTTCA
TGCAGCATCCCAAGAACCTTGGCCTGATCGCATATTCTGGAGAGGAAGACAGTGGCTGAGTGCCTCT
CTATTACTACCTGACTAAGAAGAATGAGAACTATAAGAGCCTGGTGGAGACGGAGCTATCGCGCCCGCGG



[View online »](#)

CGCCCCGCGAGTCTCGCTGGCACTCAACTACGCTGCGGGTCCCCGAGGCATCATCGACCTGTCCCAAGT
 GCCACACCTGCCTGTGCTCGTGCCCCGACACCAGGCACCCAGCCACCGCCATGGACCGCCTTGCCCTAC
 CTCCCCACCGCGCCCCAGCCCTTTCAGCAGCCGCCACAGCAGCTCCCCACTCTCCCAGGAGGTCCAACAC
 ACTTGACAAAACCAACCACACGCTCCTCGTCCGAGCGGGAGCGAGACCGGGATCGAGAGCGGGACCGGGA
 TCGGGAGCGGGAAAAGTCCATCCTCACGTCCACCACGACGGTGGAGCAGCACCCATCTGGAGACCTGGT
 ACAGAGCAGAGCAGCGGCAGCAGCGCGGGGGTGGGGCAGCAGCAGCCGCCCGCTCCCCTCCCATG
 CCCACCGACTCGCCATCTCCCCTCGGACCCAGGATGCCCTCCAGCAGAGACCCAGTGTGCTTACAA
 CACAGGCATGAAGGGTATCATCACCGCTGTGGAGCCAGCAGCCACGGTCTGAGGTCCACCTCCACC
 TCTCACCCGTTCCGCCGCTGCCACATTCACCTGCCACCCACTGCCACTGGCGGCCACCTCGATG
 GGGTCTACCCTACCCTCATGGAGCCGTTGCTGCCAAGGAGGCCCGGGTCCGCCGCGCCAGAGCG
 GCCCGGAGCAGACACCGCCATGCCTTCTCGCAAGCCCCAGCCCGTCCGGGCTGGAGCCCGCTCC
 TCCCCAGCAAGGGCTCGGAGCCCCGGCCCTAGTGCCTCTGTCTTGCCACGCCACCATCGCCCGCA
 CCCCTGCAAGAACCTCGCACCTACCACGCCAGCCGGACCCCGCGGCCACCTGCCTCGGCCTCGGA
 CCCGCACCGGGAAAAGACTCAAAGTAAACCTTTTCCATCCAGGAACTGGAACCTCGTTCTCTGGGTTAC
 CACGGCAGCAGCTACAGCCCCGAAGGGTGGAGCCGTCAGCCCTGTGAGCTACCCAGTCTGACCCAG
 ACAAGGGGCTCCCAAGCACCTGGAAGAGCTCGACAAGAGCCACCTGGAGGGGGAGCTGGCGCCAAGCA
 GCCAGGCCCGTGAAGCTTGGCGGGGAGGCCGCCACCTCCCACACCTGCGGCCGCTGCCTGAGAGCCAG
 CCCTCGTCCAGCCGCTGCTCCAGACCGCCCCAGGGGTCAAAGGTACCAGCGGGTGGTACCCTGGCCC
 AGCACATCAGTGAGGTATCACACAGGACTACACCCGGCACCCACACAGCAGCTCAGCGCACCCCTGCC
 CGCCCCCTCTACTCCTTCCCTGGGGCCAGTGCCCGTCTGGACCTCCGCCGCCACCCAGTACCTC
 TACCTCCCGCCCCGACCATGGTGCCTGGCCGCTGGTCCCCCACAGCAAGGGGGCAAGAGGTCTC
 CAGAGCCAAACAAGACGTCGGTCTTGGTGGTGGTGGAGACGGTATTGAACCTGTGTCCCACCGGAGGG
 CATGACGGAGCCAGGGCACTCCCGAGTGTGTACCCGCTGCTGTACCGGGATGGGGAACAGACGGAG
 CCCAGCAGGATGGGCTCCAAGTCTCCAGGCAACACCAGCCAGCCGCCAGCCTTCTTCAGCAAGTACCCG
 AGAGCAACTCCGCCATGGTCAAGTCCAAGAAGCAAGAGATCAACAAGAAGCTGAACACCCACAACCGGAA
 TGAGCCTGAATACAATATCAGCCAGCCTGGGACGGAGATCTTCAATATGCCCGCCATCACCGGAACAGGC
 CTTATGACCTATAGAAGCCAGGCGGTGCAGGAACATGCCAGCACCAACATGGGGCTGGAGGCCATAATTA
 GAAAGGCACTCATGGGTAATATGACCAGTGGGAAGAGTCCCCGCGCTCAGCGCAATGCTTTAAACCC
 TCTGAATGCCAGTGCCAGCCTGCCCGTGTATGCCATAACCGTGTGACGGACGGAGTGACCACACA
 CTCACCTCGCCAGGTGGCGGCGGAAGGCCAAGGTCTCTGGCAGACCCAGCAGCCGAAAAGCCAAGTCCC
 CGCCCCGGGCTGGCATCTGGGACCGGCCACCTCTGTCTCCTCAGTGCCTCGGAGGGAGACTGCAA
 CGCCCGGACCGCTCACCAACCGGTGTGGGAGGACAGGCCCTCGTCCGAGGTTCCACGCCATTCACC
 TACAACCCCTGATCATGCGGCTGCAGGCGGGTGTATGGCTTCCCCACCCACCGGGCTCCCCGCGG
 GCAGCGGGCCCTCGCTGGCCCCACCACGCTGGGACGAGGAGCCCAAGCCACTGCTCTGCTCGCAGTA
 CGAGACACTCTCCGACAGCGAG

ACGCGTACGCGGCCGCTCGAG – GFP Tag – GTTTAA

Protein Sequence: >RG235391 representing NM_001206654
 Red=Cloning site Green=Tags(s)

```

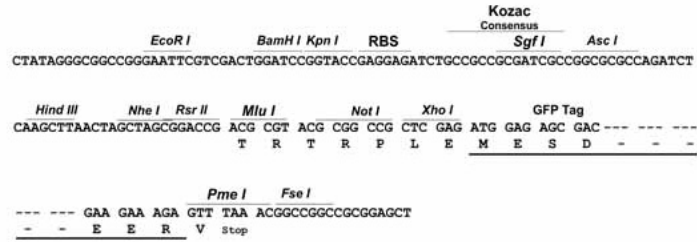
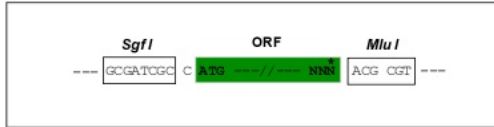
MSGSTQPVAQWTRATEPRYPHSLSYPVQIARTHTDVGLLEYQHHSRDYASHLSPGSI IQPQRRRPSLLS
EFQPGNERSQELHLRPESHSYLPELGKSEMEFIESKRPRELELLPDLLRPSPLLATGQPAGEDLTKDRS
LTGKLEPVSPSPPHDPELELVPPRLSKEELIQNMDRVDREITMVEQQISLKKKQQQLEEEAAKPPEP
EKPVSPPIESKHRSLVQIIYDENRKKAEAAHRILEGLGQVELPLYNQPSDTRQYHENIKINQAMRKKL
ILYFKRRNHARKQWEQKFCQRYDQLMEAWKVERIENNRRAKESKVREYYEQFPEIRKQRELQERM
QRVQGRGSGLSMSAARSEHEVSEIIDGLSEQENLEKQMRQLAVIPPMLYDADQQRKFINMNGLMADPMK
VYKDRQVMNMWSEQEKETFREKFMQHPKNFGLIASFLERKTVAECVLYYYLTKKNENYKSLVRRSYRRRG
KSQQQQQQQQQQQQQQQMPRSSQEEKDEKEKEAEKEEEEKPEVENDKEDLLKEKTDSDSGEDNDEK
EAVASKGRKTANSQGRKGRITRSMANEANSEEAITPQQSAELASMELENESSRWTEEMETAKKGLLEHG
RNWSAIARMVGSKTVSQCKNFYFNKKRQNLDEILQHKLMKEMERNARRKKKAPAAASEEAFPPVVE
DEEMASGVSNGNEEMVEEAEATVNSSDTEIPSPHTEAAKDTGQNGPKPPATLGADGPPPGPPTPPE
DIPAPTEPTASEATGAPTPPPAPPSPSAPPVVPKEEKEEETAAPPVEEGEEQKPPAAEELAVDTGKA
EFPVKSECTEEAEEGPAKGDAAEAEATAEALKAKEKGGSGRATTAKSSGAPQDSDSSATCSADEVDE
AEGGDKNRLSPRPSLLTPTGDPANASQKPLDLKQLKQRAAIIPIQVTKVHEPPREDAAPT KPAPPA
PPPPQNLQPESDAPQPGSSPRGKSRSPAPPADKEAEKPVFFAFAAEAQKLPGDPPCWTSGLPFPVPPR
EVIKASPHAPDPSAFSYAPPGHPLPLGLHDTARPVLPRPPTISNPPLISSAKHPSVLERQIGAISQGMS
VQLHVPYSEHAKAPVGPVTMGLPLPMDPKKLPFSGVKQEQLSRPGQAGPPELVGPTAQEASVLRGTAL
GSVPGGSIKGIPTSRVSDSAITYRGSITHGTPADVLYKGTITRIIGEDSPSRDLDRGREDSLPKGHVYI
EGKKGHVLSYEGGMSVTQCSKEDGRSSSGPPHETAAPKRTYDMMEGRVGRAISSASIEGLMGRAIPPERH
SPHHLKEQHHRISITQGI PRSYVEAQEDYL RREAKLLKREGTPPPPPSRDLTEAYKTQALGPLKPKA
HEGLVATVKEAGRSIHEIPREELRHTPELPLAPRPLKEGSITQGTPLKYDTGASTTGSKKHVRSILGSP
GRTFPPVHPLDVMADARALERACYEESLKS RPGTASSSGGSIARGAPVIVPEL GKPRQSPLTYEDHGAPF
AGHLPRGSPVTTRETPRLQEGSLSSSKASQDRKLTSTPREIAKSPHSTVPEHHPHPI SPYEHLLRGVSG
VDLYRSHIPLAFDPTSI PRGIPLDAAAAYLPRHLAPNPTYPHLYPPYLIRGYPDTAALENRQTIINDYI
TSQQMHNAATAAQRADMLRGLSPRESSLALNYAAGPRGIIDL SQVPHLPVLPPTPGTPATAMDRLAY
LPTAPQPFSSRHSSSPLSPGGPHTLTKPTTSSSERERDRDRERDREREKSILTSTTTVEHAPIWRPG
TEQSSGSSGGGGSSSRPASHSHAHQHSPISPRTDALQQRPSVLHNTGMKGII TAVEPSTPTVLRSTST
SSPVRPAATFPPATHCPLGGTLDGVYPTLMEPVLLPKEAPRVARPERPRADTGHAF LAKPPARSGL EPAS
SPSKGSEPRPLVPPVSGHATIARTPAKNLAPHHASPDPAPPASASDPHREKTQSKPFSIQELELRLSLGY
HGSSYSPEGVPEVSPVSSPSLTHDKGLPKHLEELDKSHLEGELRPKQPGPVKLGGEAAHLPHLRPLPESQ
PSSSPLLQTAPGVKGHQRVVTLAQHISEVITQDYTRHHPQLSAPLPAPLYSFPGASCPVLDLRPPSDL
YLPPPDHGAPARGSPHSEGGKRSPEPNKTVLGGGEDGIEPVSPPEGMTEPGHSRS AVYPLL YRDGEQTE
PSRMGSKSPGNTSQPPAFFSKL TESNSAMVSKKQEI NKKLNTHNRNEPEYNISQPGTEIFNMPAITGTG
LMTYRSQAVQEHA STMGLEA IIRKALMGKYDQWEE SPPLSANAFNPLNASASLPAAMPITAADGRSDHT
LTSPPGGGKAKVSGRPSRRKAKSPAPGLASGDRPPSVSSVHSEGD CNRRTPLNTRVWEDRPS SAGSTPFP
YNPLIMRLQAGVMASPPPPGLPAGSGPLAGPHHAWDEE PKPLLCSQYETLSDSE
  
```

TRTRPLE - GFP Tag - V

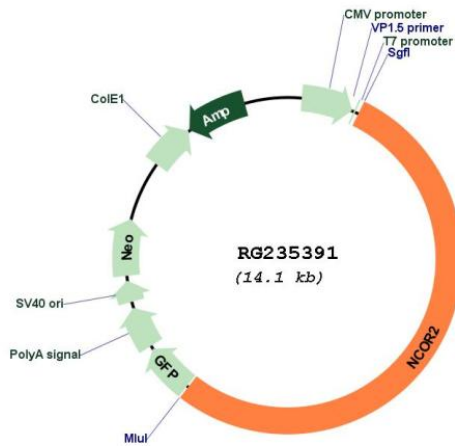
Restriction Sites: SgfI-MluI

Cloning Scheme:

Cloning sites used for ORF Shutting:



Plasmid Map:



ACCN: NM_001206654

ORF Size: 7512 bp

OTI Disclaimer:	The molecular sequence of this clone aligns with the gene accession number as a point of reference only. However, individual transcript sequences of the same gene can differ through naturally occurring variations (e.g. polymorphisms), each with its own valid existence. This clone is substantially in agreement with the reference, but a complete review of all prevailing variants is recommended prior to use. More info
OTI Annotation:	This clone was engineered to express the complete ORF with an expression tag. Expression varies depending on the nature of the gene.
Components:	The ORF clone is ion-exchange column purified and shipped in a 2D barcoded Matrix tube containing 10ug of transfection-ready, dried plasmid DNA (reconstitute with 100 ul of water).
Reconstitution Method:	<ol style="list-style-type: none"> 1. Centrifuge at 5,000xg for 5min. 2. Carefully open the tube and add 100ul of sterile water to dissolve the DNA. 3. Close the tube and incubate for 10 minutes at room temperature. 4. Briefly vortex the tube and then do a quick spin (less than 5000xg) to concentrate the liquid at the bottom. 5. Store the suspended plasmid at -20°C. The DNA is stable for at least one year from date of shipping when stored at -20°C.
RefSeq:	NM_001206654.2
RefSeq Size:	8827 bp
RefSeq ORF:	7515 bp
Locus ID:	9612
UniProt ID:	Q9Y618
Cytogenetics:	12q24.31
Protein Families:	Druggable Genome
Protein Pathways:	Notch signaling pathway
Gene Summary:	This gene encodes a nuclear receptor co-repressor that mediates transcriptional silencing of certain target genes. The encoded protein is a member of a family of thyroid hormone- and retinoic acid receptor-associated co-repressors. This protein acts as part of a multisubunit complex which includes histone deacetylases to modify chromatin structure that prevents basal transcriptional activity of target genes. Aberrant expression of this gene is associated with certain cancers. Alternate splicing results in multiple transcript variants encoding different isoforms.[provided by RefSeq, Apr 2011]