

Product datasheet for **RG235376**

CACNA1G (NM_001256360) Human Tagged ORF Clone

Product data:

Product Type:	Expression Plasmids
Product Name:	CACNA1G (NM_001256360) Human Tagged ORF Clone
Tag:	TurboGFP
Symbol:	CACNA1G
Synonyms:	Ca(V)T.1; Cav3.1; NBR13; SCA42; SCA42ND
Mammalian Cell Selection:	Neomycin
Vector:	pCMV6-AC-GFP (PS100010)
E. coli Selection:	Ampicillin (100 ug/mL)
ORF Nucleotide Sequence:	>RG235376 representing NM_001256360 Red=Cloning site Blue=ORF Green=Tags(s)

TTTTGTAATACGACTCACTATAGGGCGGCCGGAATTCGTCGACTGGATCCGGTACCGAGGAGATCTGCC
GCC**CGATCGCC**

ATGGACGAGGAGGAGGATGGAGCGGGCCGAGGAGTCGGGACAGCCCCGGAGCTTCATGCGGCTCAACG
ACCTGTCTGGGGCCGGGGCCGGCCGGGGCCGGGGTCCAGCAGAAAAGGACCCGGGCGAGCGCGACTCCGA
GGCGGAGGGGCTGCCGTACCCGGCGCTGGCCCCGGTGGTTTTCTCTACTTGAGCCAGGACAGCCGCCG
CGGAGCTGGTGTCTCCGACGGTCTGTAACCCCTGGTTTGAGCGCATCAGCATGTTGGTCATCCTTCTCA
ACTGCGTGACCCCTGGGCATGTTCCGGCCATGCGAGGACATCGCCTGTGACTCCCAGCGCTGCCGGATCCT
GCAGGCCCTTGTGACTTCATCTTTGCCTTCTTTGCCGTGGAGATGGTGGTGAAGATGGTGGCCTTGGGC
ATCTTTGGGAAAAAGTGTACCTGGGAGACACTTGAACCCGGCTTGAATTTTTCATCGTCATCGCAGGGA
TGCTGGAGTACTCGTGGACCTGCAGAACGTCAGCTTCTCAGCTGTCAGGACAGTCCGTGTGCTGCGACC
GCTCAGGGCCATTAACCGGGTGCCAGCATGCGCATCCTGTGCACGTTGCTGGATACGCTGCCCATG
CTGGGCAACGTCCTGCTGCTCTGCTTCTTCGTCTTCTTCATCTTCGGCATCGTCGGCGTCCAGCTGTGGG
CAGGGCTGCTTCGGAACCGATGCTTCTACCTGAGAATTCAGCCTCCCCCTGAGCGTGGACCTGGAGCG
CTATTACCAGACAGAGAACGAGGATGAGAGCCCCCTTCACTGCTCCAGCCACGCGAGAACGGCATGCGG
TCCTGCAAGCGTGCCACGCTGCGCGGGGACGGGGCGGTGGCCACCTTGGCTGACTATGAGG
CCTACAACAGCTCCAGCAACACCACCTGTGTCACTGGAACCACTACTACCAACTGCTCAGCGGGGA
GCACAACCCCTTCAAGGGCGCCATCAACTTTGACAACATTGGCTATGCCTGGATCGCCATCTTCCAGGTC
ATCAGCTGGAGGGCTGGGTCGACATCATGTAATTTGTGATGGATGCTCATTCTTCTACAATTTTCATCT
ACTTCATCCTCCTCATCATCGTGGGCTCCTTCTTCATGATCAACCTGTGCCTGGTGGTGATTGCCACGCA
GTTCTCAGAGACCAAGCAGCGGAAAGCCAGCTGATGCGGGAGCAGCGTGTGCGGTTCTGTCCAACGCC
AGCACCCCTGGCTAGCTTCTGTAGCCCGGACGCTGCTATGAGGAGCTGCTCAAGTACCTGGTGTACATCC
TTCGTAAGGCAGCCCGCAGGCTGGCTCAGGTCTCTCGGGCAGCAGGTGTGCGGGTGGGCTGCTCAGCAG
CCCAGCACCCCTCGGGGCCAGGAGACCAGCCAGCAGCAGCTGCTCTCGCTCCACCGCCGCTATCC



[View online >](#)

GTCCACCACCTGGTGCACCACCACCACCACCATCACCACCACTACCACCTGGGCAATGGGACGCTCAGGG
 CCCCCGGGCCAGCCCGGAGATCCAGGACAGGGATGCCAATGGGTCCC GCCGGCTCATGCTGCCACCACC
 CTCGACGCCTGCCCTCTCCGGGGCCCCCTGGTGGCGCAGAGTCTGTGCACAGCTTCTACCATGCCGAC
 TGCCACTTAGAGCCAGTCCGCTGCCAGGCGCCCCCTCCAGGTCCCACATCTGAGGCATCCGGCAGGACTG
 TGGCAGCGGGAAGGTGTATCCCACCGTGCACACCAGCCCTCCACCGAGACGCTGAAGGAGAAGGCACT
 AGTAGAGGTGGCTGCCAGCTCTGGGCCCAACCCTCACCAGCCTCAACATCCCACCCGGGCCCTACAGC
 TCCATGCACAAGCTGCTGGAGACACAGAGTACAGGTGCCTGCCAAAGCTTTGCAAGATCTCCAGCCCTT
 GCTTGAAAGCAGACAGTGGAGCCTGTGGTCCAGACAGCTGCCCTACTGTGCCCGGGCCGGGCAGGGGA
 GGTGGAGCTCGCCGACCGTGAATGCCTGACTCAGACAGCGAGGCAAGTTATGAGTTCACACAGGATGCC
 CAGCACAGCGACCTCCGGGACCCCCACAGCCGGCGGAACGGAGCCTGGGCCAGATGCAGAGCCAGCT
 CTGTGCTGGCCTTCTGGAGGTAATCTGTGACACCTTCCGAAAGATTGTGGACAGCAAGTACTTTGGCCG
 GGGAAATCATGATCGCCATCCTGGTCAACACACTCAGCATGGGCATCGAATACCACGAGCAGCCCGAGGAG
 CTTACCAACGCCCTAGAAATCAGCAACATCGTCTTACCAGCCTCTTGGCCCTGGAGATGCTGCTGAAGC
 TGCTTGTGTATGGTCCCTTTGGTACATCAAGAATCCCTACAACATCTTCGATGGTGTATTGTGGTGT
 CAGCGTGTGGGAGATCGTGGGCCAGCAGGGGGCGGCCTGTCGGTGTGCGGACCTTCCGCTGATGCGT
 GTGCTGAAGCTGGTGCCTTCTGCCGGCGCTGCAGCGGAGCTGGTGGTGTCTGAAGACCATGGACA
 ACGTGGCCACCTTCTGCATGCTGCTTATGCTCTTCATCTTCATCTTCAGCATCTGGGCATGCATCTCTT
 CGGCTGCAAGTTTGCCTCTGAGCGGGATGGGGACACCCTGCCAGACCGGAAGAATTTTACTCCTTGTCT
 TGGGCCATCGTCACTGTCTTTCAGATCTGACCCAGGAGGACTGGAACAAAGTCTCTACAATGGTATGG
 CCTCCACGTGCTCCTGGGCGGCCCTTATTTTATTGCCCTCATGACCTTCGGCAACTACGTGCTCTTCAA
 TTTGCTGGTCCGCTTCTGGTGGAGGGCTTCCAGGCGGAGGAAATCAGCAACCGGAAGATGCGAGTGG
 CAGTTAAGCTGTATTAGCTGCCTGTGACTCCCAGGGGGAGATGCCAACAAAGTCCGAATCAGAGCCCG
 ATTTCTTCTCACCAGCCTGGATGGTGTATGGGGACAGGAAGAAGTCTTGGCCTTGGTGTCCCTGGGAGA
 GCACCCGGAGCTGCGGAAGAGCCTGCTGCCGCTCTCATCATCCACAGCGCCGCCACCCATGTGCGCTG
 CCCAAGAGCACCAGCACGGCCCTGGGCGAGGCGCTGGGCCCTGCGTCCGCGCCGACCAGCAGCAGCGGT
 CGGCAGAGCCTGGGGCGGCCACGAGATGAAGTACCAGCCAGCGCCGAGCTCTCCGACAGCCCTG
 GAGCGCTGCAAGCAGCTGGACCAGCAGGCGCTCCAGCCGGAACAGCCTCGGCCGTGACCCAGCCTGAAG
 CGGAGAAGCCCAAGTGGAGAGCGGCGGTCCCTGTTGTGCGGAGAAGGCCAGGAGAGCCAGGATGAAGAGG
 AGAGCTCAGAAGAGGAGCGGGCCAGCCCTGCGGGCAGTGACCATGCCACAGGGGTCCCTGGAGCGGGA
 GGCCAAGAGTTCCCTTGGCTGCCAGACACTGCAGGTGCCAGGGCTGCATCGACTGCCAGTGGCCGA
 GGGTCTGCTTCTGAGCACCAGGACTGCAATGGCAAGTCCGCTTCCAGGGCGCTGGCCGGGCCCTGCGGC
 CTGATGACCCCCACTGGATGGGGATGACGCCGATGACGAGGGCAACCTGAGCAAAGGGGAACGGGTCCG
 CGCGTGGATCCGAGCCCGACTCCCTGCCTGCTGCCTCGAGCGAGACTCCTGGTACGCTACATCTTCCCT
 CCTCAGTCCAGGTTCCGCTCCTGTGTACCCGGATCATCACCCACAAGATGTTCCGACCAGTGGTCCCTG
 TCATCATCTTCTTAAGTGCATCACCATCGCCATGGAGCGCCCCAAAATTGACCCCCACAGCGCTGAACG
 CATCTTCTGACCCTCTCCAATTACATCTTACCAGCAGTCTTCTGGCTGAAATGACAGTGAAGGTGGT
 GCACTGGGCTGGTGTCTCGGGGAGCAGGCGTACCTGCGGAGCAGTTGGAACGTGCTGGACGGGCTGTTG
 TGCTCATCTCCGTCATCGAATTCTGGTGTCCATGGTCTCTGACAGCGGCCAACAGATCCTGGGCATGCT
 GAGGGTGTGCGGCTGCTGCGGACCCCTGCGCCGCTCAGGGTATCAGCCGGGCGCAGGGGCTGAAGCTG
 GTGGTGGAGACGCTGATGTCTCACTGAAACCCATCGGCAACATTGTAGTCATCTGCTGTGCTTCTTCA
 TCAATTTTCGCGATCTTGGGGTGCAGCTCTTCAAAGGGAAGTTTTTCGTGTGCCAGGCGAGGATACCAG
 GAACATCACCAATAAATCGGACTGTGCCGAGGCCAGTTACCGGTGGGTCCGGCACAAGTACAACCTTGGAC
 AACCTTGGCCAGGCCCTGATGTCCCTGTTGTTTTGGCTCCAAGGATGGTTGGGTGGACATCATGTACG
 ATGGGCTGGATGCTGTGGCGTGGACCAGCAGAACATGTTTGGGGTGTGGTGGTGGAGAAGTCCACAA
 GTGTGCGGAGCACCAGGAGGAAGAGGAGGCCCGGGCGGGAGGAGAAGCGCCTACGAAGACTGGAGAAA
 AAGAGAAGGAGTAAGGAGAAGCAGATGGCTGAAGCCAGTGCAAACCTTACTACTCCGACTACTCCGCT
 TCCGGCTCCTCGTCCACCCTTGTGCACCAGCCACTACCTGGACCTTTCATCACAGGTGTATCGGGCT
 GAACGTGGTACCATGGCCATGGAGCACTACCAGCAGCCAGATTCTGGATGAGGCTCTGAAGATCTGC
 AACTACATCTTCACTGTATCTTTGTCTTGGAGTCAAGTTTCAAACCTTGTGGCCTTTGGTTCCGTCGGT
 TCTTCCAGGACAGGTGGAACCAGCTGGACCTGGCCATTGTGCTGTGTCATCATGGGCATCAGCTGGA
 GGAAATCGAGGTCAACGCCTCGCTGCCATCAACCCACCATCATCCGCATCATGAGGGTGTGCGCATT
 GCCCGAGTGTGAAGCTGCTGAAGATGGCTGTGGGCATGCGGGCGCTGCTGGACACGGTGTGACAGGCC

TGCCCCAGGTGGGGAACCTGGGACTTCTCTTCATGTTGTTGTTTTTCATCTTTGCAGCTCTGGGCGTGGA
GCTCTTTGGAGACCTGGAGTGTGACGAGACACACCCTGTGAGGGCCTGGGCCGTCATGCCACCTTTCGG
AACTTTGGCATGGCCTTCTAACCTCTCCGAGTCTCCACAGGTGACAATTGGAATGGCATTATGAAGG
ACACCTCCGGGACTGTGACCAGGAGTCCACCTGCTACAACACGGTCATCTCGCCTATCTACTTTGTGTC
CTTCGTGCTGACGGCCAGTTTCGTGCTAGTCAACGTGGTATCGCCGTGCTGATGAAGCACCTGGAGGAG
AGCAACAAGGAGGCCAAGGAGGAGGCCGAGCTAGAGGCTGAGCTGGAGCTGGAGATGAAGACCTCAGCC
CCCAGCCCCACTCGCCACTGGGCAGCCCCCTTCTGTCGCTGGGGTCGAGGGCCCCGACAGCCCCGACAG
CCCCAAGCCTGGGGCTCTGCACCCAGCGGCCACGCGAGATCAGCCTCCCACTTTTCCCTGGAGCACCCC
ACGATGCAGCCCCACCCACGGAGCTGCCAGGACCAGACTTACTGACTGTGCGGAAGTCTGGGGTCAGCC
GAACGCACTCTCTGCCAATGACAGCTACATGTGTGCGCATGGGAGCACTGCCGAGGGGGCCCTGGGACA
CAGGGGCTGGGGGCTCCCCAAAGCTCAGTCAGGCTCCGTCTTGTCCGTTCACTCCAGCCAGCAGATACC
AGCTACATCCTGCAGTTCCTCAAAGATGCACCTCATCTGCTCCAGCCCCACAGCGCCCCAACCTGGGGCA
CCATCCCCAAACTGCCCCACCAGGACGCTCCCTTTGGCTCAGAGGCCACTCAGCGCCAGGCAGCAAT
AAGGACTGACTCCTTGGACGTTCAAGGTCTGGGCAGCCGGAAGACCTGCTGGCAGAGGTGAGTGGGCC
TCCCCGCCCTGGCCCGGCCTACTCTTCTGGGGCCAGTCAAGTACCCAGGCACAGCAGCACTCCCGCA
GCCACAGCAAGATCTCCAAGCACATGACCCCGCAGCCCTTGCCAGGCCCAGAACCCAACTGGGGCAA
GGGCCCTCCAGAGACCAGAAGCAGCTTAGAGTTGGACACGGAGCTGAGCTGGATTCAGGAGACCTCCTG
CCCCCTGGCGGCCAGGAGGAGCCCCATCCCCACGGGACCTGAAGAAGTGTACAGCGTGGAGGCCCAGA
GCTGCCAGCGCCGGCCTACGTCTGGCTGGATGAGCAGAGGAGACTCTATCGCCGTGAGTGCCTGGA
CAGCGGCTCCCAACCCACCTGGGCACAGACCCCTTAACCTTGGGGGCCAGCCTTGGGGGGCCTGGG
AGCCGGCCCAAGAAAAAAGTCAAGCCCGCTAGTATCACCATAGACCCCCCGAGAGCCAAGGTCTCGGA
CCCCGCCAGCCCTGGTATCTGCCTCCGGAGGAGGGCTCCGTCCAGCGACTCCAAGGATCCCTTGGCCTC
TGGCCCCCTGACAGCATGGCTGCCTCGCCCTCCCCAAGAAAGATGTGCTGAGTCTCTCCGTTTATCC
TCTGACCCAGCAGACTGGACCCC

ACGCGTACGCGGCCGCTCGAG – GFP Tag – GTTTAA

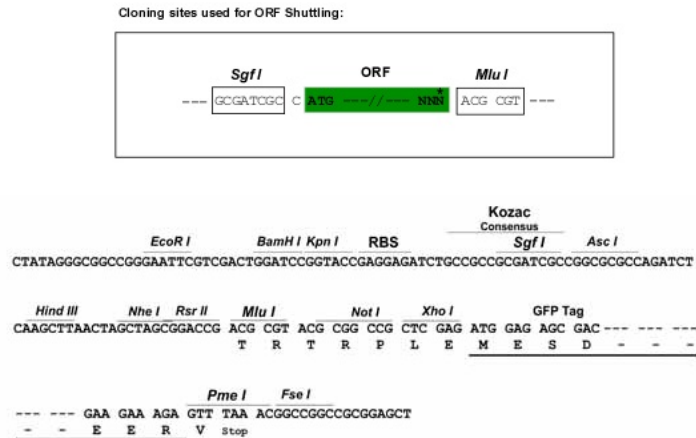
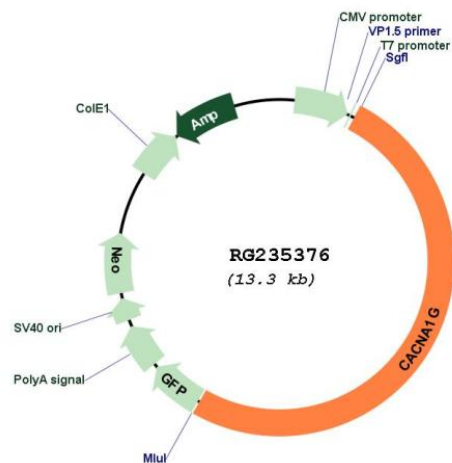
Protein Sequence: >RG235376 representing NM_001256360
 Red=Cloning site Green=Tags(s)

```

MDEEDGAGAEESGQPRFSMRLNDLSGAGGRPGPGSAEKDPGSADSEAEGLPYPALAPVVFVYLSQDSRP
RSWCLRTVCNPWFERISMLVILLNCVTLGMFRPCEDIACDSQRCRILQAFDDFIFAFFAVEMVVKMVALG
IFGKKCYLGDWNRLDFFIVIAGMLEYSLDLQNVSFSAVRTVRVLRPLRAINRVPSMRILVTLTLLDTPM
LGNVLLLCFFVFFIFGI VGVQLWAGLLRNRCFLPENFSLPLSVDLERYYTENEDESPFICSPRENGMR
SCRSVPTLRGDGGGPPCGLDYEAYNSSNTTCVNNWQYYTNC SAGEHNPFKGAINFNIGYAWIAIFQV
ITLEGWVDIMYFVMDAHSFYNF IYFILLIIVGSFFMINLCLVVIATQFSETKQRESQLMREQRVRFLSNA
STLASFSEPGSCYEELLYLVYILRKAARRLAQVSRAAGVRVGLLSSPAPLGGQETQPSSSCSRSHRRLS
VHHLVHHHHHHHHYHLGNGTLRAPRASPEIQDRDANGSRRLMLPPPSTPALSGAPPGGAESVHSFYHAD
CHLEPVRCAQAPPRSPSEASGRTVGSGKVVYPTVHTSPPPETLKEKALVEVAASSGPPTL TSLNIPPGPYS
SMHKLLETQSTGACQSSCKISSPCLKADSGACGPDSCPYCARAGAGEVELADREMPDSDSEAVYEFQDA
QHSDLRDPHSRRQRS LGPDAEPSSVLA FWRLICDTFRKIVDSKYFGRGIMIAILVNTLSMGIEYHEQPEE
LTNALEISNIVTSLFALEMLLKL VYGPFYIKNPYNI FDGVI VVISVWEIVGQGGGLSVLRTFRMLR
VLKLVRF PALQRQLVVLMTMDNVATFCMLLM LFI FIF SILGMHLFGCKFASERDGD TLPDRKNFDSLL
WAVTVVFQILTQEDWNKVL YNGMASTSSWAALYFIALMTFGNYVLFNLLVAILVEGFQAEIISKREDASG
QLSCIQLPVDSQGGDANKSESEP DFFSPSLDGDGDRKKCLALVSLGEHPELRKSLLP LIHTAATPMSL
PKSTSTGLGEALGPASRR TSSSGSAEPGAAHEMKSPPSARSSPHSPWSAASSWTSRRSSRNSLGRAPSLK
RRSPSGERRSLLSGEGQESQDEEESSEERAS PAGESDHRHRGSLEREAKSSFDLPDTLQVPLHRTASGR
GSASEHQDCNGKSASGR LARALRPDDPPLDGD DADDEGNLSKGERVRAWIRARLPACCLERDSWSAYIFP
PQSRFRLLCHRIITHKMF DHVVLVII FLNCITIAMERPKIDPHSAERIFL TLSNYIFTAVFLAEMTVKVV
ALGCFGEQAYLRSSWNVLDGLLV LISVIDILVSMVSDSGTKILGMLRVLRLLRTRLRPLRVISRAQGLKL
VYVETLMSLKP IGNIVVICCAFF IIFGILGVQLFKGKFFVCQGEDTRNITNKSDCAEAS YRWRHKYNFD
NLGQALMSL FVLASKDGWVDIMYDGLDAVGV DQQNMFVGVVVENFHKCRQH QEEEEARRREEKRLRLEK
KRRSKEQMAEAQCKPYYS DYSRFRLLVHHLCTSHYLDL FITGVI GLNVVTMAMEHYQQPQILDEALKIC
NYIFTVIFVLESVFKL VAFGFRFFQDRWNQLDLAIVLLSIMGITLEEIEVNASLPINPTIIRIMRVLRI
ARVLKLLKMAVGM RALLDTVMQALPQVGNL GLLFMLLFFIFAALGVELFGDLECD EHPCEGLGRHATFR
NFGMAFLTLFRVSTGDNWNGIMKDTLRDCDQESTCYNTVISPIYFVSFVLT AQFVLVNVVIAVLMKHLEE
SNKEAKEEAELAELEEMKTLSPQHSPLGSPFLWPGVEGPDSPD SPKPGALHPAAHARSASHFSLEHP
TMQPHTELP GPDLLTVRKSGVSRTHSLPNDSYMC RHGSTAEGPLGHRGWGLPKAQSGSVLSVHSQPADT
SYILQLPKDAPHL LQPHSAPTWTGIPKLP PPGRSPLAQRPLRRQAAIRTD SLDVQGLGSREDLLAEVSGP
SPPLARAYSFWGQSSTQAQQHSRSHSKI SKHMTTPAPCPGPEPNWKGPPETRSLELDTL SWISGDL
PPGGQEEPPSPRDLKKCYSVEAQSCQR RPTSWLDEQRRHSIAVSCLDSGSQPHLGTDP SNLGGQPLGGPG
SRPKKLSPPSITIDPPESQGPRTPPSPGICLRRRAPSSDSK DPLASGPPDSMAASPSPKKDVL SL SGLS
SDPADLDP
  
```

TRTRPLE - GFP Tag - V

Restriction Sites: Sgfl-MluI

Cloning Scheme:

Plasmid Map:


ACCN: NM_001256360

ORF Size: 6744 bp

OTI Disclaimer: The molecular sequence of this clone aligns with the gene accession number as a point of reference only. However, individual transcript sequences of the same gene can differ through naturally occurring variations (e.g. polymorphisms), each with its own valid existence. This clone is substantially in agreement with the reference, but a complete review of all prevailing variants is recommended prior to use. [More info](#)

OTI Annotation: This clone was engineered to express the complete ORF with an expression tag. Expression varies depending on the nature of the gene.

Components: The ORF clone is ion-exchange column purified and shipped in a 2D barcoded Matrix tube containing 10ug of transfection-ready, dried plasmid DNA (reconstitute with 100 ul of water).

Reconstitution Method:	<ol style="list-style-type: none">1. Centrifuge at 5,000xg for 5min.2. Carefully open the tube and add 100ul of sterile water to dissolve the DNA.3. Close the tube and incubate for 10 minutes at room temperature.4. Briefly vortex the tube and then do a quick spin (less than 5000xg) to concentrate the liquid at the bottom.5. Store the suspended plasmid at -20°C. The DNA is stable for at least one year from date of shipping when stored at -20°C.
RefSeq:	NM_001256360.2
RefSeq Size:	7877 bp
RefSeq ORF:	6747 bp
Locus ID:	8913
UniProt ID:	O43497
Cytogenetics:	17q21.33
Protein Families:	Druggable Genome, Ion Channels: Calcium, Transmembrane
Protein Pathways:	Calcium signaling pathway, MAPK signaling pathway, Type II diabetes mellitus
Gene Summary:	Voltage-sensitive calcium channels mediate the entry of calcium ions into excitable cells, and are also involved in a variety of calcium-dependent processes, including muscle contraction, hormone or neurotransmitter release, gene expression, cell motility, cell division, and cell death. This gene encodes a T-type, low-voltage activated calcium channel. The T-type channels generate currents that are both transient, owing to fast inactivation, and tiny, owing to small conductance. T-type channels are thought to be involved in pacemaker activity, low-threshold calcium spikes, neuronal oscillations and resonance, and rebound burst firing. Many alternatively spliced transcript variants encoding different isoforms have been described for this gene. [provided by RefSeq, Sep 2011]