

Product datasheet for **RG235361**

CIT (NM_001206999) Human Tagged ORF Clone

Product data:

Product Type:	Expression Plasmids
Product Name:	CIT (NM_001206999) Human Tagged ORF Clone
Tag:	TurboGFP
Symbol:	CIT
Synonyms:	CITK; CRIK; MCPH17; STK21
Mammalian Cell Selection:	Neomycin
Vector:	pCMV6-AC-GFP (PS100010)
E. coli Selection:	Ampicillin (100 ug/mL)
ORF Nucleotide Sequence:	>RG235361 representing NM_001206999 Red=Cloning site Blue=ORF Green=Tags(s)

TTTTGTAATACGACTCACTATAGGGCGGCCGGAATTCGTCGACTGGATCCGGTACCGAGGAGATCTGCC
GCC**CGATCGCC**

ATGTTGAAGTTCAAATATGGAGCGCGGAATCCTTTGGATGCTGGTGTCTGAACCCATTGCCAGCCGGG
CCTCCAGGCTGAATCTGTTCTTCCAGGGGAAACCACCCTTTATGACTCAACAGCAGATGTCTCTCTTTCC
CCGAGAAGGGATATTAGATGCCCTCTTTGTTCTTTGAAGAATGCAGTCAGCCTGCTCTGATGAAGATT
AAGCACGTGAGCAACTTTGTCCGGAAGTATTCCGACACCATAGCTGAGTTACAGGAGCTCCAGCCTTCGG
CAAAGGACTTCGAAGTCAGAAGTCTTGTAGGTTGGTCACTTTGCTGAAGTGCAGTGGTAAGAGAGAA
AGCAACCGGGGACATCTATGCTATGAAAGTGATGAAGAAGAAGGCTTTATTGGCCAGGAGCAGGTTTCA
TTTTTTGAGGAAGAGCGGAACATATTATCTCGAAGCACAAAGCCCGTGGATCCCCCAATTACAGTATGCC
TTCAGGACAAAAATCACCTTTATCTGGTCATGGAATATCAGCCTGGAGGGGACTTGTCTCACTTTTGAA
TAGATATGAGGACCAGTTAGATGAAAACCTGATACAGTTTTACCTAGCTGAGCTGATTTTGGCTGTTTAC
AGCGTTCATCTGATGGGATACGTGCATCGAGACATCAAGCCTGAGAACATTCTCGTTGACCGCACAGGAC
ACATCAAGCTGGTGGATTTTGGATCTGCCGCGAAAATGAATCAAACAAGATGGTGAATGCCAACTCCC
GATTGGGACCCCAGATTACATGGCTCCTGAAGTGTGACTGTGATGAACGGGGATGGAAAAGCCACTAC
GGCCTGGACTGTGACTGGTGGTGTGAGTGGCGGTGATTGCCTATGAGATGATTTATGGGAGATCCCCCTCG
CAGAGGGAACCTCTGCCAGAACCTTCAATAACATTATGAATTTCCAGCGTTTTTGAATTTCCAGATGA
CCCCAAAGTGAGCAGTACTTTCTTGATCTGATTCAAAGCTTGTGTGCGGCCAGAAAGAGAGACTGAAG
TTTGAAGGTCTTTGCTGCCATCCTTTCTCTCTAAAATTGACTGGAACAACATTCGTAACCTCCTCCCC
CCTTCGTTCCACCCTCAAGTCTGACGATGACACCTCCAATTTTGTGATGAACCAGAGAAGAATTCGTGGGT
TTCATCCTCTCCGTGCCAGCTGAGCCCTCAGGCTTCTCGGGTGAAGAACTGCCGTTTGTGGGTTTTTCG
TACAGCAAGGCACTGGGATTCTTGGTAGACTGAGTCTGTTGTGTGCGGGTCTGGACTCCCTGCCAAGA
CTAGCTCCATGAAAAGAACTTCTCATAAAAGCAAAGACTACAAGACTCTCAGGACAAGTGTCAAA
GATGGAGCAGAAATGACCCGTTACATCGGAGAGTGTGAGAGGTGGAGGCTGTGCTTAGTCAGAAGGAG



[View online >](#)

GTGGAGCTGAAGGCCTCTGAGACTCAGAGATCCCTCCTGGAGCAGGACCTTGCTACCTACATCACAGAAT
GCAGTAGCTTAAAGCGAAGTTTGGAGCAAGCACGGATGGAGGTGTCCCAGGAGGTGACAAAAGCACTGCA
GCTTCTCCATGATATCAGAGAGCAGAGCCGGAAGCTCCAAGAAATCAAAGAGCAGGAGTACCAGGCTCAA
GTGGAAGAAATGAGGTTGATGATGAATCAGTTGGAAGAGGATCTTGTCTCAGCAAGAAGACGGAGTGATC
TCTACGAATCTGAGCTGAGAGAGTCTCGCTTGTCTGCTGAAGAATTAAGCGGAAAGCGACAGAATGTCA
GCATAAATCTGTTGAAGGCTAAGGATCAAGGGAAGCCTGAAGTGGGAGAATATGCGAACTGGAGAAGATC
AATGCTGAGCAGCAGCTCAAAATTCAGGAGCTCCAAGAGAACTGGAGAAGGCTGTAAGGCCAGCACGG
AGGCCACCGAGCTGCTGCAGAATATCCGCCAGGCAAGGAGCGAGCCGAGAGGGAGCTGGAGAAGCTGCA
GAACCGAGAGGATTCTTCTGAAGGCATCAGAAAAGGCTGGTGGAAAGCTGAGGAACGCCGCCATTCTCTG
GAGAACAAGGTAAGAGACTAGAGACCTGGAGCGTAGAGAAAACAGACTGAAGGATGACATCCAGACAA
AATCCCAACAGATCCAGCAGATGGCTGATAAAATCTGGAGCTCGAAGAGAAACATCGGGAGGCCAAAGT
CTCAGCCCAGCACCTAGAAGTGCACCTGAAACAGAAAGAGCAGCACTATGAGGAAAAGATTAAGTGTG
GACAATCAGATAAAGAAAGACCTGGCTGACAAGGAGACTGGAGAACATGATGCAGAGACACGAGGAGG
AGGCCCATGAGAAGGGCAAAATCTCAGCGAACAGAAGGCGATGATCAATGCTATGGATTCCAAGATCAG
ATCCCTGGAACAGAGGATTGTGGAAGTGTCTGAAGCCAATAAACTGCAGCAAATAGCAGTCTTTTTACC
CAAAGGAACATGAAGGCCAAGAAGAGATGATTTCTGAACTCAGGCAACAGAAATTTTACCTGGAGACAC
AGGCTGGGAAGTTGGAGGCCAGAACCGAAAATGGAGGAGCAGCTGGAGAAGATCAGCCACCAAGACCA
CAGTGACAAGAATCGGCTGCTGGAAGTGGAGACAAGATTGCGGGAGGTCAGTCTAGAGCACGAGGAGCAG
AACTGGAGCTCAAGCGCCAGCTCACAGAGCTACAGCTCTCCCTGCAGGAGCGGAGTCAAGTTGACAG
CCCTGCAGGCTGCACGGGCGGCCCTGGAGAGCCAGCTTCGCCAGGCGAAGACAGAGCTGGAAGAGACCAC
AGCAGAAGCTGAAGAGGAGATCCAGGCACTCACGGCACATAGAGATGAAATCCAGCGCAAATTTGATGCT
CTTCGTAACAGCTGTACTGTAATCACAGACCTGGAGGAGCAGCTAAACCAGCTGACCGGAGCAACGCTG
AACAACAACCAAAAATCTACTTGTCCAACAACCTGATGAGGCTTCTGGCCCAACGACGAGATTGT
ACAACTGCGAAGTGAAGTGGACCATCTCCGCCGGGAGATCACGGAACGAGAGATGACGCTTACCAGCCAG
AAGCAAACGATGGAGGCTCTGAAGACCAGTGCACCATGCTGGAGGAACAGGTCATGGATTTGGAGGCC
TAAACGATGAGCTGCTAGAAAAAGAGCGGCAGTGGGAGGCTGGAGGAGCGTCTGGGTGATGAGAAATC
CCAGTTTGTAGTGTGGGTTGAGAGCTGCAGAGAAATGCTGGACCCGAGAAAACAGAGCAGGGCGAGAGCC
GATCAGCGGATCACCGAGTCTCGCCAGGTGGTGGAGCTGGCAGTGAAGGAGCACAAAGGCTGAGATTCTCG
CTCTGCAGCAGGCTCTCAAAGAGCAGAAGCTGAAGGCCGAGAGCCTCTCTGACAAGCTCAATGACCTGGA
GAAGAAGCATGCTATGCTTGAATGAATGCCCGAAGCTTACAGCAGAAGCTGGAGACTGAACGAGAGCTC
AAACAGAGGCTTCTGGAAGAGCAAGCCAAATTACAGCAGCAGATGGACCTGCAGAAAAATCACATTTTCC
GTCTGACTCAAGGACTGCAAGAAGCTCTAGATCGGGCTGATCTACTGAAGACAGAAAAGTGAAGTGGGA
GTATCAGCTGGAACATTTCAGGTTCTCTATTCTCATGAAAAGGTGAAAATGGAAGGCACTATTTCTCAA
CAAACCAAACTCATTGATTTTCTGCAAGCCAAAATGGACCAACCTGCTAAAAAGAAAAGGGTTTATTTA
GTGCAGCGAAAGAGGACCTGCTTTACCCACACAGGTTCTCTGCAGTACAATGAGCTGAAGCTGGCCCT
GGAGAAGGAGAAAGCTCGCTGTGCAGAGCTAGAGGAAGCCCTTCAGAAGACCCGCATCGAGCTCCGGTCC
GCCCGGGAGGAAGCTGCCACCGCAAAGCAACGGACCACCCACACCCATCCACGCCAGCCACCGCGAGGC
AGCAGATCGCCATGTCCGCATCGTGGGTCGCCAGAGCACCAGCCAGTGCATGAGCTGTGGCCCC
GCCATCCAGCCGAGAAAGGAGTCTTCAACTCCAGAGGAATTTAGTCGGCGTCTTAAGGAACGCATGCAC
CACAAATTTCTCACCGATTCAACGTAGGACTGAACATGCGAGCCACAAAGTGTGCTGTGTCTGGATA
CCGTGCACCTTTGGACGCCAGGCATCCAATGTCTCGAATGTCAGGTGATGTGTACCCCAAGTGTCCAC
GTGCTTGCAGCCACCTGCGGCTTGCCTGCTGAATATGCCACACACTTACCCGAGGCTTCTGCCGTGAC
AAAATGAACTCCCAGGTCTCCAGACCAAGGAGCCAGCAGCAGCTTGCACCTGGAAGGGTGGATGAAGG
TGCCAGGAATAACAACGAGGACAGCAAGGCTGGGACAGGAAGTACATTGCTCTGGAGGGATCAAAGT
CCTCATTTATGACAATGAAGCCAGAGAAGCTGGACAGAGGCGGTGGAAGAATTTGAGCTGTGCCTTCCC
GACGGGGATGATCTATTTCATGGTGCCGTTGGTGTCTCCGAACTCGAAAATACAGCCAAAGCAGATGTCC
CATACTACTGAAGATGGAATCTCACCCGCACACCACCTGCTGGCCCGGAGAACCTCTACTTGCTAGC
TCCAGCTTCCCTGACAAACAGCGCTGGGTACCGCCTTGAATCAGTTGTGCGAGGTGGGAGAGTTTCT
AGGGAAAAGCAGAAGCTGATGCTAAACTGCTTGGAACTCCCTGCTGAACTGGAAGGTGATGACCGTC
TAGACATGAACTGCACGCTGCCCTTCAAGTACCAGGTGGTGTGGTGGGCACCGAGGAAGGGCTCTACGC
CCTGAATGCTTGAAGAACTCCCTAACCCATGTCCAGGAATGGAGCAGTCTTCCAAATTTATATTATC
AAGGACCTGGAGAAGCTACTCATGATAGCAGGAGAAGAGCGGGCACTGTGTCTTGTGGACGTGAAGAAAG

TGAAACAGTCCCTGGCCAGTCCCACCTGCCTGCCAGCCGACATCTCACCCAACATTTTTGAAGCTGT
CAAGGGCTGCCACTTGTTTTGGGGCAGGCAAGATTGAGAACGGGCTCTGCATCTGTGCAGCCATGCCCAGC
AAAGTCGTCATTCTCCGCTACAACGAAAACCTCAGCAAACTACTGCATCCGGAAAGAGATAGAGACCTCAG
AGCCCTGCAGCTGTATCCACTTCACCAATTACAGTATCCTCATTGGAACCAATAAATTCTACGAAATCGA
CATGAAGCAGTACACGCTCGAGGAATTCCTGGATAAGAATGACCATTCTTGGCACCTGCTGTGTTTGCC
GCCTCTTCCAACAGTTCCTGTCTCAATCGTGCAGGTGAACAGCGCAGGGCAGCGAGAGGAGTACTTGC
TGTGTTTCCACGAATTTGGAGTGTTCGTGGATTCTTACGGAAGACGTAGCCGCACAGACGATCTCAAGTG
GAGTCGTTACCTTTGGCCTTTGCCTACAGAGAACCCTATCTGTTTGTGACCCACTTCAACTCACTCGAA
GTAATTGAGATCCAGGCACGCTCCTCAGCAGGGACCCCTGCCGAGCGTACCTGGACATCCCGAACCCGC
GCTACCTGGGCCCTGCCATTTCTCAGGAGCGATTTACTTGGCGTCTCATACCAGGATAAATTAAGGGT
CATTTGCTGCAAGGGAAACCTCGTGAAGGAGTCCGGCACTGAACACCACCGGGGCCGTCACCTCCCGC
AGCAGCCCAACAAGCGAGGCCACCCACGTACAACGAGCACATCACCAAGCGCGTGGCCTCCAGCCAG
CGCCGCCGAAGGCCAGCCACCCGCGAGAGCAAGCACACCCACCGTACCGCGAGGGGCGGACCGA
GCTGCGCAGGGACAAGTCTCTGGCCGCCCTGGAGCGAGAGAAGTCCCCGGCCGGATGCTCAGCAGC
CGGAGAGAGCGGTCCCCGGGAGGCTGTTGAAGACAGCAGCAGGGGCCGGCTGCCTGCGGGAGCCGTGA
GGACCCCGCTGTCCAGGTGAACAAGGTCTGGACCAGTCTTCAGTA

ACGCGTACGCGGCCGCTCGAG - GFP Tag - GTTTAA

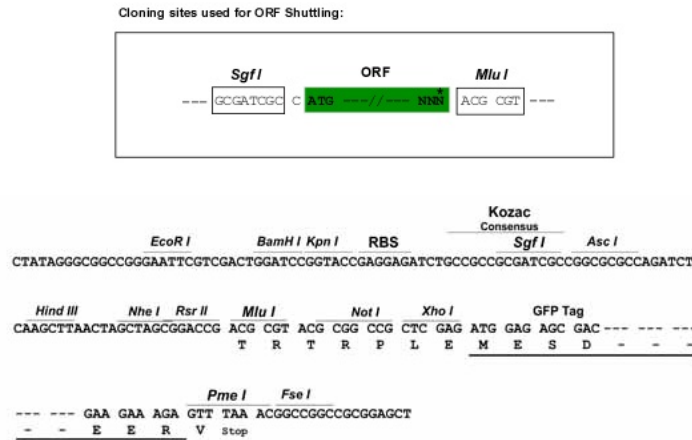
Protein Sequence: >RG235361 representing NM_001206999
 Red=Cloning site Green=Tags(s)

MLKFKY GARNPLDAGAAEPIASRASRLNLFQGGKPPFMTQQQMSPLSREGILDALFVLFEECSPALMKI
 KHVSNFVRKYSDTIAELQELQPSAKDFEVRSLVGCGHF AEVQVVREKATGDIYAMKVMKKKALLAQEQVS
 FFEEERNILSRSTSPWIPQLQYAFQDKNHLVMEYQPGDLSLLNRYEDQLDENLIQFYLAELILAVH
 SVHLMGYVHRDIKPENILVDRTGHIKLVDFGSAKMNSNMVNAKLP IGTDPDYMAPEVLTVMNGDGKGT
 GLDCDWWVSVGVIA YEM IYGRSPFAEGTSARTFNNIMNFQRFLKFPDDPKVSSDFLDLIQSLLCGQKERL
 FEGLCCHPFFSKIDWNNIRNSPPFPVPTLKSDDDTSNFDEPEKNSWSSSPCQLSPSGFSGEELPFVGF
 YSKALGILGRSESVVSGLDSPAKTSSMEKKLLIKSKELQDSQDKCHKMEQEMTRLHRRVSEVEAVLSQKE
 VELKASETQRSLLEQDLATYITECSSLKRSLQARMEVSEQEDDKALQLLHDIREQSRKLEIKEQEYQAQ
 VEEMRLMMNQLEEDLVSARRRSDLYESELRESRLAAEFKRKATECQHKLKAKDQKPEVGEYAKLEKI
 NAEQQLKIQELQEKLEKAVKASTEATELLQNIQAKERAERELEKLNREDSSEGIRKLVAAEERRHSL
 ENKVKRLETMERRENRLKDDIQTKSQIQQMADKILEEKEHREAQVSAQHLEVHLKQKEQHYEEKIKVL
 DNQIKKDLADKETLENMQRHEEEAHEKGIKILSEQKAMINAMDSKIRSLEQRIVELSEANKLAANSSFT
 QRNMKAQEEMISELRQQKFYLETQAGKLEAQRNLEEQLKISHQDHSKRNRLLELETRLREVSLEHEEQ
 KLELEKRLTELQSLQERESQLTALQAARAALSQLRQAKTELETTAEAEIEIQAHTAHRDEIQRKFDA
 LRNSCTVITDLEEQLNQLTEDNAELNNQNFYLSKQLDEASGANDEIVQLRSEVDHLRREITEREMQLTSQ
 KQTMEALKTTCTMLEEQVMDLEALNDELLEKERQWEAWRSVLGDEKSQLFECRVRELQRMLDTEKQSRARA
 DQRITESRQVVELAVKEHKAELALQALKEQKLAESLSDKLNLEKHAMLEMNARSLQKLETEREL
 KQRLLEEQAQLQQMDLQKNHIFRLTQGLQEALDRADLLKTERSDLEYQLENIQVLSHEKVKMEGTISQ
 QTKLIDFLQAKMDQPAKGGKGLFSRRKEDPALPTQVPLQYNELKLALKEKARCAELEALQKTRIELRS
 AREEAAHRKATDHPHPSTPATARQIAMSIVRSPEHQPSAMSLAPPSSRRKESSTPEEFRRRLKERMH
 HNIPHRFNVGLNMRATKCAVCLDTVHFGRQASKCLECQVMCHPKCSTCLPATCGLPAEYATHFTEAFCRD
 KMNSPGLQTKEPSSSLHLEGWVKVPRNNKRGQGWDRKYIVLEGSKVL IYDNEAREAGQRPVEEFELCLP
 DGDVSIHGAVGASELANTAKADVPIILKMEHPHTTCWPGRTRYLLAPSFDPKQRWVTALESVVAGGRVS
 REKAEADAKLLGNSLLKLEGGDRLDMNCTLPFSDQVVLVGTEGLYALNVLKNSLTHVPGIGAVFQIYII
 KDLEKLLMIAGEERALCLVDVKKVKQSLAQSHLPAQPDISPNI FEAVKGCFLFGAGKIENGLCICAAMPS
 KVVILRYNENLSKYCIRKEIETSEPCSCIHFTNYSILIGTNKFYEIDMKQYTL EEFLDKNDHSLAPAVFA
 ASSNSFPVSIQVNSAGQREEYLLCFHEFGVFDVSYGRRSRTDDLKWSRLPLAFAYREPYLVFVTHFNSLE
 VIEIQARSSAGTPARAYLDIPNPRYLGAISSGAIYLASSYQDKLRVICCKGNLVKESGTEHHRGPSTSR
 SSPNKRGPPTYNEHITKRVASSPAPPEGSPHPREPSTPHRYREGRTLELRDKSPGRPLEREKSPGRMLST
 RRERSPGRLFEDSSRGRLPAGAVRTPLSQVKNVVDQSSV

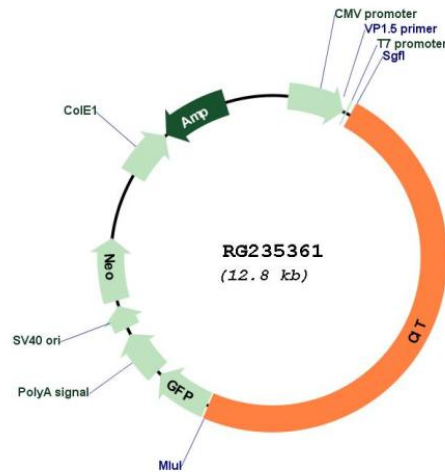
TRTRPLE - GFP Tag - V

Restriction Sites: SgfI-MluI

Cloning Scheme:



Plasmid Map:



ACCN: NM_001206999

ORF Size: 6207 bp

OTI Disclaimer: The molecular sequence of this clone aligns with the gene accession number as a point of reference only. However, individual transcript sequences of the same gene can differ through naturally occurring variations (e.g. polymorphisms), each with its own valid existence. This clone is substantially in agreement with the reference, but a complete review of all prevailing variants is recommended prior to use. [More info](#)

OTI Annotation: This clone was engineered to express the complete ORF with an expression tag. Expression varies depending on the nature of the gene.

Components:	The ORF clone is ion-exchange column purified and shipped in a 2D barcoded Matrix tube containing 10ug of transfection-ready, dried plasmid DNA (reconstitute with 100 ul of water).
Reconstitution Method:	<ol style="list-style-type: none">1. Centrifuge at 5,000xg for 5min.2. Carefully open the tube and add 100ul of sterile water to dissolve the DNA.3. Close the tube and incubate for 10 minutes at room temperature.4. Briefly vortex the tube and then do a quick spin (less than 5000xg) to concentrate the liquid at the bottom.5. Store the suspended plasmid at -20°C. The DNA is stable for at least one year from date of shipping when stored at -20°C.
RefSeq:	<u>NM_001206999.2</u>
RefSeq Size:	8708 bp
RefSeq ORF:	6210 bp
Locus ID:	11113
UniProt ID:	<u>O14578</u>
Cytogenetics:	12q24.23
Protein Families:	Druggable Genome, Protein Kinase
Gene Summary:	This gene encodes a serine/threonine-protein kinase that functions in cell division. Together with the kinesin KIF14, this protein localizes to the central spindle and midbody, and functions to promote efficient cytokinesis. This protein is involved in central nervous system development. Polymorphisms in this gene are associated with bipolar disorder and risk for schizophrenia. Alternative splicing results in multiple transcript variants. [provided by RefSeq, Aug 2011]