

Product datasheet for **RG235358**

SCN1A (NM_001202435) Human Tagged ORF Clone

Product data:

Product Type:	Expression Plasmids
Product Name:	SCN1A (NM_001202435) Human Tagged ORF Clone
Tag:	TurboGFP
Symbol:	SCN1A
Synonyms:	DEE6; DEE6A; DEE6B; DRVT; EIEE6; FEB3; FEB3A; FHM3; GEFSP2; HBSCI; NAC1; Nav1.1; SCN1; SMEI
Mammalian Cell Selection:	Neomycin
Vector:	pCMV6-AC-GFP (PS100010)
E. coli Selection:	Ampicillin (100 ug/mL)
ORF Nucleotide Sequence:	>RG235358 representing NM_001202435 Red=Cloning site Blue=ORF Green=Tags(s)

TTTTGTAATACGACTCACTATAGGGCGGCCGGAATTCGTCGACTGGATCCGGTACCGAGGAGATCTGCC
GCC**CGATCGCC**

ATGGAGCAAACAGTGCTTGTACCACCAGGACCTGACAGCTTCAACTTCTTACCAGAGAATCTCTTGCGG
CTATTGAAAGACGCATTGCAGAAGAAAAGGCAAAGAATCCCAAACCAGACAAAAAGATGACGACGAAAA
TGGCCCAAAGCCAAATAGTGACTTGAAGCTGGAAGAACCTTCCATTTATTTATGGAGACATTCCTCCA
GAGATGGTGTGACAGCCCTGGAGGACCTGACCCCTACTATCAATAAGAAAACCTTTATAGTATTGA
ATAAAGGGAAGGCCATCTCCGGTTCAGTGCCACCTCTGCCCTGTACATTTAACTCCCTCAATCCTCT
TAGGAAAATAGCTATTAAGATTTTGGTACATTCATTATTCAGCATGCTAATTATGTGCACTATTTTGACA
AACTGTGTGTTTATGACAATGAGTAACCCTCCTGATTGGACAAAGAATGTAGAATACACCTTCACAGGAA
TATATACTTTTGAATCACTTATAAAAAATTATTGCAAGGGGATTCTGTTTGAAGATTTTACTTTCCTTCG
GGATCCATGGAACCTGGCTCGATTTCACTGTCAATTACATTTGCGTACGTACAGAGTTTGTGGACCTGGGC
AATGTCTCGGCATTGAGAACATTCAGAGTTCTCCGAGCATTGAAGACGATTTTCAGTCATTCCAGGCCTGA
AAACCATTTGTTGGAGCCCTGATCCAGTCTGTGAAGAAGCTCTCAGATGTAATGATCCTGACTGTGTTCTG
TCTGAGCGTATTTGCTCTAATTTGGGCTGCAGCTGTTTATGGGCAACCTGAGGAATAAATGTATACAATGG
CCTCCCACCAATGCTTCTTTGGAGGAACATAGTATAGAAAAGAATATAACTGTGAATTATAATGGTACAC
TTATAAATGAAACTGTCTTTGAGTTTGACTGGAAGTCAATATCAAGATTCAAGATATCATTATTTCT
GGAGGGTTTTTTAGATGCACTACTATGTGAAAATAGCTCTGATGCAGGCCAATGTCCAGAGGGATATAG
TGTGTGAAAGCTGGTAGAAATCCCAATTATGGCTACACAAGCTTTGATACCTTCAGTTGGGCTTTTTTGT
CCTTGTTCGACTAATGACTCAGGACTTCTGGGAAAATCTTTATCAACTGACATTACGTGCTGCTGGGAA
AACGTACATGATTTTTTTGATTGGTCATTTTCTGGGCTATTCTACCTAATAAATTTGATCCTGGCT
GTGGTGGCCATGGCCTACGAGGAACAGAATCAGGCCACCTTGAAGAAGCAGAACAGAAAGAGGCCGAAT
TTCAGCAGATGATTGAACAGCTTAAAAAGCAACAGGAGGCAGCTCAGCAGGCAGCAACGGCAACTGCCTC



AGAACATTCCAGAGAGCCAGTGCAGCAGGCAGGCTCTCAGACAGCTCATCTGAAGCCTCTAAGTTGAGT
 TCCAAGAGTGCTAAGGAAAGAAGAAATCGGAGGAAGAAAAGAAAACAGAAAGAGCAGTCTGGTGGGGAAG
 AGAAAGATGAGGATGAATTCAAAAATCTGAATCTGAGGACAGCATCAGGAGGAAAGGTTTTCGCTTCTC
 CATTGAAGGGAACCGATTGACATATGAAAAGAGGTACTCTCCCCACACCAGTCTTTGTTGAGCATCCGT
 GGCTCCCTATTTTACCAAGGCGAAATAGCAGAACAAGCCTTTTCAGCTTTAGAGGGCGAGCAAAGGATG
 TGGGATCTGAGAACGACTTCGCAGATGATGAGCACAGCACCTTTGAGGATAACGAGAGCCGTAGAGATTC
 CTTGTTTTGTCCCCGACGACCGAGAGAGACGCAACAGCAACCTGAGTCAGACAGTGGTCATCCCCGG
 ATGCTGGCAGTGTTCAGCGAATGGGAAGATGCACAGCACTGTGGATTGCAATGGTGTGGTTTTCCCTGG
 TTGGTGGACCTTCAGTTCCTACATCGCCTGTTGGACAGCTTCTGCCAGAGGTGATAATAGATAAGCCAGC
 TACTGATGACAATGGAACAACCACTGAAACTGAAATGAGAAAAGAGAAGGTCAAGTTCTTTCCACGTTTCC
 ATGGACTTTCTAGAAGATCCTTCCCAAAGGCAACGAGCAATGAGTATAGCCAGCATTCTAACAAATACAG
 TAGAAGAACTTGAAGAATCCAGGCAGAAATGCCACCCTGTTGGTATAAATTTTCCAACATATTCTTAAT
 CTGGGACTGTTCTCCATATTGGTTAAAAGTGAACATGTTGTCAACCTGGTTGTGATGGACCCATTTGTT
 GACCTGGCCATCACCATCTGTATTGTCTTAAACTCTTTTCATGGCCATGGAGCACTATCCAATGACGG
 ACCATTTCAATAATGTGCTTACAGTAGGAACTTGGTTTTCACTGGGATCTTTACAGCAGAAATGTTTCT
 GAAAATTATTGCCATGGATCCTTACTATATTTCCAAGAAGGCTGGAATATCTTTGACGGTTTTATTGTG
 ACGCTTAGCCTGGTAGAACTTGGACTCGCCAATGTGGAAGGATTATCTGTCTCCGTTCAATTTCCGATTGC
 TGCGAGTTTTCAAGTTGGCAAAATCTTGGCCAACGTTAAATATGCTAATAAAGATCATCGGCAATCCGT
 GGGGGCTCTGGGAAATTTAACCCCTCGTCTTGGCCATCATCGTCTTCATTTTTGCCGTGGTCCGCATGCGA
 CTCTTTGGTAAAAGCTACAAAGATTGTGTCTGCAAGATCGCCAGTGATTGTCAACTCCCACGCTGGCACA
 TGAATGACTTCTTCCACTCCTCCTGATTGTGTCCGCGTGTGTGGGAGTGGATAGAGACCATGTG
 GGACTGTATGGAGTTGCTGGTCAAGCCATGTGCCTTACTGTCTTCATGATGGTCATGGTATTGGAAC
 CTAGTGGTCTGAATCTCTTTTGGCCTTGCTTCTGAGCTCATTTAGTGCAGACAACCTTGCAGCAGCTG
 ATGATGATAATGAAATGAATAATCTCCAATTTGCTGTGGATAGGATGCACAAAGGAGTAGCTTATGTGAA
 AAGAAAAATATGAAATTTATCAACAGTCCTTATTAGGAAAACAAAAGATTTTAGATGAAATTAACCA
 CTTGATGATCTAAACAACAAGAAAGACAGTTGTATGTCCAATCATACAGCAGAAATGGGAAAGATCTTG
 ACTATCTTAAAGATGAAATGGAACCTACAAGTGGTATAGGAACTGGCAGCAGTGTGAAAAATACATTAT
 TGATGAAAGTGATTACATGTCATTACATAAACAACCCAGTCTTACTGTGACTGTACCAATTGCTGTAGGA
 GAATCTGACTTTGAAAAATTAACACGGAAGACTTTAGTAGTGAATCGGATCTGGAAGAAAGCAAAGAGA
 AACTGAATGAAAGCAGTAGCTCATCAGAAGGTAGCACTGTGACATCGGGCACCTGTAGAAGAACAGCC
 CGTAGTGAACCTGAAGAACTCTTGAACCAGAAGCTTGTTCCTGAAGGCTGTGTACAAGATCAAG
 TGTGTCAAAATCAATGTGGAAGAAGGCAGAGGAAAACAATGGTGGAACCTGAGAAGGACGTGTTCCGAA
 TAGTTGAACATAACTGGTTTGGACCTTATTGTTTTCATGATTCTCCTAGTAGTGGTGTCTGGCATT
 TGAAGATATATATTGATCAGCGAAAGACGATTAAGACGATGTTGGAATATGCTGACAAGGTTTTCACT
 TACATTTTCACTTGGAAATGCTTCTAAAATGGGTGGCATATGGCTATCAAAATATTTACCAATGGCT
 GGTGTTGGCTGGACTTCTTAATTGTTGATGTTTCAATGGTCAGTTAACAGCAAATGCCTTGGGTTACTC
 AGAACTGGAGCCATCAATCTCTCAGGACCTAAGAGCTCTGAGACCTAAGAGCCTTATCTCGATT
 GAAGGGATGAGGGTGGTGTGAATGCCCTTTTAGGAGCAATCCATCCATCATGAATGTGCTTCTGGTTT
 GTCTTATATTCTGGCTAATTTTACGATCATGGGCGTAAATTTGTTTGGTGGCAAATCTACCACGTAT
 TAACACCACAACCTGGTGACAGTTTGCATCGAAGACGTGAATAATCATACTGATTGCCTAAAACATAA
 GAAAGAAATGAGACTGCTCGATGGAAAAATGTGAAAGTAACTTTGATAATGTAGGATTTGGGTATCTCT
 CTTTGTCTCAAGTTGCCACATTCAAAGGATGGATGGATATAATGTATGCAGCAGTTGATTCCAGAAATGT
 GGAACCTCAGCCTAAGTATGAAGAAAGTCTGTACATGTATCTTTACTTTGTTATTTTTCATCATCTTTGGG
 TCCTTCTTCACTTGAACCTGTTTATTGGTGTATCATAGATAATTTCAACCAGCAGAAAAAGAAGTTG
 GAGGTCAAGACATCTTTATGACAGAAGAACAAGAAATACTATAATGCAATGAAAAATAGGATCGAA
 AAAACCGCAAAAGCCTATACCTCGACCAGGAAACAAATTTCAAGGAATGGTCTTTGACTTCGTAACCAGA
 CAAGTTTTTACATAAGCATCATGATTCTCATCTGTCTTAAACATGGTCACATGATGGTGGAAACAGATG
 ACCAGAGTGAATATGTGACTACCATTTTGTACGCATCAATCTGGTGTTCATTGTGCTATTTACTGGAGA
 GTGTGACTGAAACTCATCTCTACGCCATTATTTTTACCATTGGATGGAATATTTTTGATTTTGTG
 GTTGTCTTCTCCATTGTAGGTATGTTTCTTGGCGAGCTGATAGAAAAGTATTTCTGTGTCCCCTACCC
 TGTTCGAGTGATCCGTCTTGTAGGATTGGCCGAATCTACGTCTGATCAAAGGAGCAAAGGGATCCG
 CACGCTGCTCTTTGCTTTGATGATGTCCCTTCTCGCTTGTTTAACATCGGCCTCTACTCTTCTAGTC

ATGTTTCATCTACGCCATCTTTGGGATGTCCAACTTTGCCTATGTTAAGAGGGAAGTTGGGATCGATGACA
 TGTTCAACTTTGAGACCTTTGGCAACAGCATGATCTGCCTATTCCAAATTACAACCTCTGCTGGCTGGGA
 TGGATTGCTAGCACCCATTCTCAACAGTAAGCCACCCGACTGTGACCCTAATAAAGTTAACCCCTGGAAGC
 TCAGTTAAGGGAGACTGTGGGAACCCATCTGTTGGAATTTCTTTTTTGTGAGTTACATCATCATATCCT
 TCCTGGTTGTGGTGAACATGTACATCGCGGTATCCTGGAGAACTTCAGTGTGCTACTGAAGAAAGTGC
 AGAGCCTCTGAGTGAGGATGACTTTGAGATGTTCTATGAGGTTTGGGAGAAGTTGATCCCGATGCAACT
 CAGTTTCATGGAATTTGAAAAATTATCTCAGTTTGCAGCTGCGCTTGAACCGCCTCTCAACTGCCACAAC
 CAAACAACTCCAGCTCATTGCCATGGATTTGCCATGGTGAAGTGGTACCAGGATCCACTGTCTTGATAT
 CTTATTTGCTTTTACAAAGCGGGTTCTAGGAGAGAGTGGAGAGATGGATGCTCTACGAATACAGATGGAA
 GAGCGATTATGGCTTCCAATCCTTCCAAGGTCTCCTATCAGCCAATCACTACTACTTTAAACGAAAAAC
 AAGAGGAAGTATCTGCTGTCATTATTCAGCGTCTTACAGACGCCACCTTTAAAGCGAACTGTAACAACA
 AGCTTCTTTACGTACAATAAAAAACAAATCAAAGGTGGGGCTAATCTTCTTATAAAAAGAAGACATGATA
 ATTGACAGAATAAATGAAAACCTATTACAGAAAAACTGATCTGACCATGTCCACTGCAGCTTGTCCAC
 CTTCTATGACCGGGTGACAAAGCCAATTGTGGAAAAACATGAGCAAGAAGGCAAAGATGAAAAAGCCAA
 AGGGAAA

ACGCGTACGCGGCCGCTCGAG - GFP Tag - GTTTAA

Protein Sequence:

>RG235358 representing NM_001202435
 Red=Cloning site Green=Tags(s)

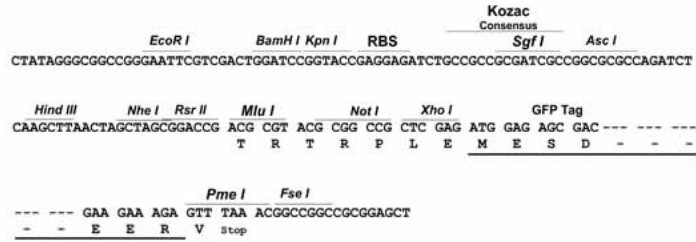
MEQTVLVPPGPDFSNFFFTRESLAAIERRIAEEKAKNPKPDKKDDDENGPKPNSDLEAGKNLFFIYGDIPP
 EMVSEPLEDLDPYYINKKTFIVLNKGKAIFFRSATSALYILTPFNPLRKAIAIKILVHSLFSLMIMCTILT
 NCVFMTSNPPDWTKNVEYFTFTGIYTFESLIKIIARGFLEDFTFLRDPWNWLDFTVITFAFYVTEFVDLG
 NVSALRTRFRVLRALKTISVIPGLKTIIVGALIQSVKLSVDMILTVFCLSVFALIGLQLFMGNLRNKCIQW
 PPTNASLEEHSIEKNITVNYNGTLINETVFEFDWKSQSYIQDSRYHYFLEGFLLDALLCGNSSDAGQCPEGYM
 CVKAGRNPNGYTSFDTFSWAFSLFRLMTQDFWENLYQLTLRAAGKTYMIFVFLVIFLGSFYLINLILA
 VVAMAYEEQNQATLEEAQEKEAEFQQMIEQLKKQQEAAQQAATATASEHSREPSAAGRLSDSSSEASKLS
 SKSAKERRNRKRKRKQEQSGGEEKDEDEFQKSESEDSIRRRKGRFISIEGNRLTYEKRYSSPHQSLLSIR
 GSLFSPRRNSRSLSFGRGRAKDVGSNDFADEHSTFEDNESRRDLSFVPRRHGERRNSNLQTSRSSL
 MLAVFPANGKMHSTVDCNGVVSLVGGPSVPTSPVGQLPEVIIDKPADDDNGTTTETEMRKRSSSFHVS
 MDFLEDPQRQRAMSIASILTNTVEELEESRQKPPCWYKFSNIFLIWDCSPYWLKVKHVNLVVMDFV
 DLAITICIVLNTLFMAMEHYPMTHFNNTLVGNLVFTGIFTAEMFLKIIAMDPIYFQEGWNIFDGFIV
 TLSLVELGLANVEGLSVLRSFRLRVFKLAKSWPTLNMLIKIIGNSVGALGNLTLVLAIIIVFIFAVVGMQ
 LFGKSYKDCVCKIASDCQLPRWHMNDFFHSFLIVFRVLCGEWIEIMWDCMEVAGQAMCLTVFMMVMVIGN
 LVVNLFLALLLSSFADNLAATDDDNEMNQLIAVDRMHKGVAVYVKKIYEFIQQSFIRKQKILDEIKP
 LDDLNNKDKSCMSNHTAIEGKLDLVDVNGTTSIGTGSVEKYIIDESDYMSFINNPSLTVTVPIAVG
 ESDFENLNTDFSSSEDLSEKELNESSSSSEGSTVDIGAPVEEQPVVEPEETLEPEACFTEGCVRQFK
 CCQINVEEGRGKQWNLRRCTFRIVEHNWFETIVFMILLSSGALAFEDIYIDQRKTIKTMLEYADKVFT
 YIFILEMLLKWVAYGYQTYFTNAWCWLDLIVDVSLVSLTANALGYSELGAIKSLRTRLRRLRPLRALS
 EGMRVVVNALLGAIPSIMNVLLVCLIFWLIFSIMGVNLFAGKPHYCINTTTGDRFDIEDVNNHTDCLKLI
 ERNETARWKNVKNVFNDFNVGFGYLSLLQVATFKGWMDIMYAAVDSRNVELQPKYEEESLYMYLVFVIFIFG
 SFFTLNLFIVGVIDNFNQKKKFGGQDIFMTEEQKKYNYAMKKGSKPKPKPIPRPGNKFGQMVDFVTR
 QVFDISIMILICLNMTMMVETDDQSEYVTTILSRINLVFVLFTEGCVLKLISLRHYFTIGWNIFDFV
 VVILSIVGMFLAELIEKYFVSPTLFRVIRLARIGRILRLIKGAKGIRTLFALMMSLPALFNIGLLFLV
 MFIYAFGMSNFAYVKREVIGDDMFNFETFGNSMICLFQITTSAGWDGLLAPILNSKPPDCDPNKVNPGS
 SVKGDGCGNPSVGIFFVSYIIISFLVVVNMVIAVILENFVATEESAEPLESDDFEMFVYVWEKFDPDAT
 QFMFEKLSQFAAALEPPLNLPQPNKQLIAMDLPMSVGDRIHCLDILFAFTKRVLGESGEMDALRIQME
 ERFMASNPSKVSYPITTTLKRKQEEVSAVIIQRAYRRHLLKRTVKQASFTYKNKIKGGANLLIKEDMI
 IDRINENSITEKTDLTMSTAACPPSYDRVTKPIVEKHEQEGKDEKAKGK

TRTRPLE - GFP Tag - V

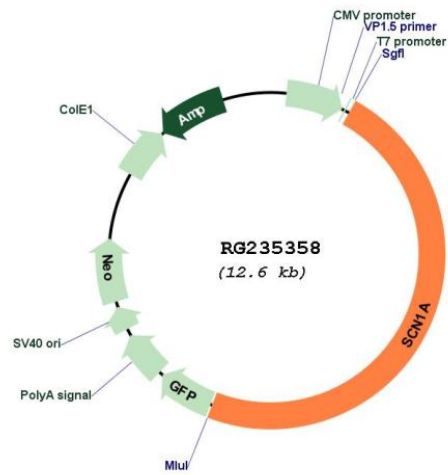
Restriction Sites: SgfI-MluI

Cloning Scheme:

Cloning sites used for ORF Shutting:



Plasmid Map:



ACCN: NM_001202435

ORF Size: 6027 bp

OTI Disclaimer: Due to the inherent nature of this plasmid, standard methods to replicate additional amounts of DNA in E. coli are highly likely to result in mutations and/or rearrangements. Therefore, OriGene does not guarantee the capability to replicate this plasmid DNA. Additional amounts of DNA can be purchased from OriGene with batch-specific, full-sequence verification at a reduced cost. Please contact our customer care team at custsupport@origene.com or by calling 301.340.3188 option 3 for pricing and delivery.

The molecular sequence of this clone aligns with the gene accession number as a point of reference only. However, individual transcript sequences of the same gene can differ through naturally occurring variations (e.g. polymorphisms), each with its own valid existence. This clone is substantially in agreement with the reference, but a complete review of all prevailing variants is recommended prior to use. [More info](#)

OTI Annotation: This clone was engineered to express the complete ORF with an expression tag. Expression varies depending on the nature of the gene.

Components: The ORF clone is ion-exchange column purified and shipped in a 2D barcoded Matrix tube containing 10ug of transfection-ready, dried plasmid DNA (reconstitute with 100 ul of water).

Reconstitution Method:

1. Centrifuge at 5,000xg for 5min.
2. Carefully open the tube and add 100ul of sterile water to dissolve the DNA.
3. Close the tube and incubate for 10 minutes at room temperature.
4. Briefly vortex the tube and then do a quick spin (less than 5000xg) to concentrate the liquid at the bottom.
5. Store the suspended plasmid at -20°C. The DNA is stable for at least one year from date of shipping when stored at -20°C.

RefSeq: [NM_001202435.3](#)

RefSeq Size: 8342 bp

RefSeq ORF: 6030 bp

Locus ID: 6323

UniProt ID: [P35498](#)

Cytogenetics: 2q24.3

Protein Families: Druggable Genome, Transmembrane

Gene Summary:

Voltage-dependent sodium channels are heteromeric complexes that regulate sodium exchange between intracellular and extracellular spaces and are essential for the generation and propagation of action potentials in muscle cells and neurons. Each sodium channel is composed of a large pore-forming, glycosylated alpha subunit and two smaller beta subunits. This gene encodes a sodium channel alpha subunit, which has four homologous domains, each of which contains six transmembrane regions. Allelic variants of this gene are associated with generalized epilepsy with febrile seizures and epileptic encephalopathy. Alternative splicing results in multiple transcript variants. The RefSeq Project has decided to create four representative RefSeq records. Three of the transcript variants are supported by experimental evidence and the fourth contains alternate 5' untranslated exons, the exact combination of which have not been experimentally confirmed for the full-length transcript. [provided by RefSeq, Oct 2015]