

## Product datasheet for **RG235357**

### Mupp1 (MPDZ) (NM\_001261407) Human Tagged ORF Clone

#### Product data:

Product Type:	Expression Plasmids
Product Name:	Mupp1 (MPDZ) (NM_001261407) Human Tagged ORF Clone
Tag:	TurboGFP
Symbol:	MPDZ
Synonyms:	HYC2; MUPP1
Mammalian Cell Selection:	Neomycin
Vector:	pCMV6-AC-GFP (PS100010)
E. coli Selection:	Ampicillin (100 ug/mL)
ORF Nucleotide Sequence:	>RG235357 representing NM_001261407 Red=Cloning site Blue=ORF Green=Tags(s)

TTTTGTAATACGACTCACTATAGGGCGGCCGGAATTCGTCGACTGGATCCGGTACCGAGGAGATCTGCC  
GCC**CGATCGCC**

ATGTTGGAAGCCATTGACAAAAATCGGGCCCTGCATGCAGCAGAGCGCTTGCAAACCAAGCTGCGAGAAC  
GTGGGGATGTAGCAAATGAAGACAACTGAGCCTTCTGAAGTCAGTCCTGCAGAGCCCTCTTTCAGTCA  
GATTCTGAGCCTTCAGACTTCTGTACAGCAGCTGAAAGACCAGGTAATATTGCAACTTCAGCAACTTCA  
AATATTGAATATGCCACGTTCTCATCTCAGCCAGCTGTGATTCTACTCTGCAAAATGAATCGTTTT  
TATTATCCCAAACAATGGGAATCTGGAAGCACTTACAGGACCTGGTATCCACACATTAATGGGAAACC  
TGCTTGTGATGAATTTGATCAGCTTATCAAAAATATGGCCAGGGTCGCCATGTAGAAGTTTTTGAGCTC  
CTCAAACCTCCATCTGGAGGCCTTGGGTTAGTGTGTGGGACTAAGAAGTAAAAACAGAGGAGAGCTGG  
GAATATTTGTTCAAGAGATACAAGAGGGCAGTGTGGCCATAGAGATGGAAGATTGAAAGAACTGATCA  
AATTCTTGCTATCAATGGACAGGCTCTTGATCAGACAATTACACATCAGCAGGCTATCAGCATCCTGCAG  
AAAGCCAAAGATACTGTCCAGCTAGTTATTGCCAGAGGCTCATTGCCTCAGCTTGTGAGCCCATAGTTT  
CCGTTCTCCATCTGCAGCCAGCACAAATTCAGCTCACTCTAATCCGTTCACTGGCAACACATGGAAAC  
GATTGAATTGGTGAATGATGGATCTGGTTGGGATTTGGCATCATAGGAGGAAAAGCAACTGGTGTGATA  
GTAAAAACCATTTGCCCTGGAGGAGTAGCTGATCAGCATGGGCGTTTTATGCAGTGGAGACCACATTTCTAA  
AGATTGGTGACACAGATCTAGCAGGAATGAGCAGTGAGCAAGTAGCACAAAGTCCTTAGGCAATGTGGAAA  
TAGAGTTAAGTTGATGATTGCAAGAGGTGCCATAGAAGAAGTACAGCACCCACTGCTTTGGGCATCACC  
CTCTCCTCATCCCAACTTCAACACCAGAGTTGCGGGTTGATGCTTCTACTCAGAAAGGTGAAGAAAGTG  
AGACATTTGATGTAGAACTCACTAAAAATGTCCAAGGATTAGGAATTACCATTGCTGGCTACATTGGAGA  
TAAAAAATGGAACTTCAGGAATCTTTGTAAGAGCATTACAAAAAGCAGTGCCGTTGAGCATGATGGA  
AGAATCCAAATGGAGACCAAAATATAGCAGTAGATGGCACAACCTTCAGGGTTTTACTAATCAGCAAG  
CAGTAGAGGATTGCGACATACAGGACAACTGTCTCCTGACACTAATGAGGAGAGGAATGAAGCAGGA  
AGCCGAGCTCATGTCAAGGAAGACGTCAAAAAGATGCAGATTTGTCTCTGTTAATGCCAGCATAATC



[View online »](#)

AAAGAAAATTATGAAAAAGATGAAGATTTTTATCTTCGACGAGAAACACCAACATATTACCAACTGAAG  
 AAGAAGGGTATCCACTGTGACGTGAGATAGAAGAAATAGAAGATGCACAAAAACAAGAAGCTGCTCT  
 GCTGACAAAATGGCAAAGGATTATGGGAATTAACATGAAATAGTGGTGGCCCATGTGAGCAAGTTTGT  
 GAGAACAGTGGATTGGGGATAAGCCTGGAAGCGACAGTGGGACATCATTTTATCCGATCTGTTCTACCAG  
 AGGGTCTGTTGGACACAGCGGGAAGCTCTTCACTGGAGACGAGCTATTGGAAGTAAATGGCATAACTTT  
 ACTTGGGAAAAATACCAAGATGTGTGAATATCTTAAAAGAAGTGCCTATAGAAGTGAATGGTGTGC  
 TGTCGTCGAAGTGTGCCACCCACCACCAATCAGAATTGGATAGCCTGGACTTATGTGATTTGAGCTAA  
 CAGAAAAGCCTCAGTAGATCTAGGTGAGTTCATCGGGTCATCAGAGACAGAGGATCCAGTGCTGGCGAT  
 GACTGATGCGGGTCAGAGTACAGAAGAGGTTCAAGCACCTTTGGCCATGTGGGAGGCTGGCATTACGAC  
 ATAGAGCTGGAGAAAGGGAGCAAAGGACTTGGTTTTAGCATTAGATTATCAGGATCCAATTGATCCAG  
 CAAGCACTGTGATTATAATTCGTTCTTTGGTGCCTGGCGCATTGCTGAAAAGGATGGACGACTTCTCC  
 TGGTGACCGACTCATGTTGTAAACGATGTTAACTTGGAAAACAGCAGTCTTGGAAAGCTGTAGAAGCA  
 CTGAAGGGAGCACCGTCAGGGACTGTGAGAATAGGAGTTGCTAAGCCTTTACCCCTTACCAGAAGAAG  
 GTTATGTTTCTGCTAAGGAGGATTCCTTCTCTACCCACCACACTCCTGTGAGGAAGCAGGGCTGGCTGA  
 CAAACCCCTCTCAGGGCTGACTTGGCTCTGGTGGGCACAAATGATGCTGACTTAGTAGAATCCACA  
 TTTGAGTCTCCATACTCTCCTGAAAATGACAGCATCTACTCTACTCAAGCCTCTATTTTATCTTTCATG  
 GCAGTTCTTGTGGTGTGGCCTGAACTATGTTTCTCCCTTCCATCATCTCCTCCTAAGGATGTTATTGA  
 AAATCTTGTGATCCAGTACTTGTGATCTGCATATGTCTCTGGAGGAACTATATACCCAGAATCTCCTGCAA  
 AGACAGGATGAGAATACACCTTCGGTGGACATAAGTATGGGGCCTGCTTCTGGCTTTACTATAAATGACT  
 ACACACCTGCAATGCTATTGAACAACAATATGAATGTGAAAACACAATAGTGTGGACTGAATCTCATT  
 ACCAAGTGAAGTTATATCAAGTGCAGAACTTCTTCTGTGCTACCCGATTCAGCTGGAAGGGCTCTGAG  
 TACCTGCTTGAACAGAGCTCCCTGGCCTGTAATGCTGAGTGTGCATGCTTCAAAATGTATCTAAAGA  
 CTTTTTAAAGGACTATTAATATAGCAAAAAGGCAATTCTAGCCTAGGAATGACAGTTAGTCTAATAAGA  
 TGGCTTGGGGATGATCGTTCGAAGCATTATTCTGGAGGTGCCATTAGTCGAGATGGCCGATTGCCATT  
 GGGGACTGCATCTTGTCCATTAATGAAGAGTCTACCATCAGTGTAAACCAATGCCAGGCAGGAGCTATG  
 TGAGAAGACATTCTCATTGGCCCTGACATAAAAATTACTTATGTGCCTGCAGAACATTTGGAAGAGTT  
 CAAAATAAGCTTGGGACAACAATCTGGAAGAGTAAATGGCACTGGATATTTTTTCTTCATACACTGGCAGA  
 GACATTCCAGAATTACCAGAGCGAGAAGAGGGAGAGGGTGAAGAAAGCGAACTTCAAAACACAGCATATA  
 GCAATTGGAATCAGCCAGGCGGGTGAACCTCTGGAGAGAACCAAGCAATCCTTAGGCATCAGCATTGT  
 TGGTGGACGAGGGATGGGAGTCCGCTAAGCAATGGAGAAGTGTGAGGGGCATTTTCATCAACATGTT  
 CTGGAAGATAGTCCAGCTGGCAAAAATGGAACCTTGAACCTGGAGATAGAAATCGTAGAGGTGGATGGAA  
 TGGACCTCAGAGATGCAAGCCATGAACAAGCTGTGGAAGCCATTGGAAGCAGGCAACCCCTGTAGTCTT  
 TATGGTACAGAGCATTATAAACAGACCAAGGGCACCCAGTCAAGTCAAGTCAAGAGCCAGAGAAGGCTCCA  
 TTGTGCACTGTGCCCCACCCCTCCTTCAAGCCTTGGCGAAATGGGTAGTGTATCACACACAGTCACTG  
 CAAGCAAAATCTCACAAGATGTGGACAAAGAGGATGAGTTTGGTTACAGCTGGAAAAATATCAGAGAGCG  
 TTATGGAACCCTAACAGGCGAGCTGCATATGATTGAACTGGAGAAAGGTCATAGTGGTTTGGGCCTAAGT  
 CTTGCTGGGAACAAGACCGATCCAGGATGAGTGTCTTCAATAGTGGGATGATCCAAATGGAGCTGCAG  
 GAAAAGATGGTCGATTGCAAATGCAGATGAGCTTCTAGAGATCAATGGTCAGATTTTATATGGAAGAAG  
 TCATCAGAAATGCCTCATCAATCATTAAATGTGCCCTTCTAAAGTGAATAATTTTTATCAGAAATAAA  
 GATGCAGTGAATCAGATGGCCGTATGCTTGGAAATGCAGTAGAACCTTTGCCTTCAACTCAGAAAAATC  
 TTCAAAATAAGGAGACAGAGCCTGTTACTACTTCTGATGCAGCTGTGGACCTCAGTTCATTTAAAAA  
 TGTGCAACATCTGGAGCTTCCAAGGATCAGGGGGTTTGGTATTGCTATCAGCGAAGAAGATACACTC  
 AGTGGAGTCATCATAAAGAGCTAACAGAGCATGGGGTAGCAGCCACGGATGGACGACTCAAAGTCGGAG  
 ATCAGATACTGGCTGTAGATGATGAAATGTTGTTGGTTACCCTATTGAAAAGTTTATTAGCCTTCTGAA  
 GACAGCAAAGATGACAGTAAACTTACCATCCATGCTGAGAATCCAGATCCCAGGCTGTTCTTCCAGCA  
 GCTGGTGCAGCCAGTGGAGAAAAAAGAACAGCTCCAGTCTCTGATGGTCCCACAGTCTGGCTCCCCAG  
 AACCGGAGTCCATCCGAAATACAAGCAGATCATCAACACCAGCAATTTTGTCTTCTGATCCTGCAACCTG  
 CCCATTATCCCTGGCTGCGAAAACAACCATCGAGATTTCAAAGGGCGAACAGGGCTGGGCTGAGCATC  
 GTTGGGGTTTCCAGACCGCTGCTGGGTGCCATTATTATCCATGAAGTTTATGAAGAAGGAGCAGCATGTA  
 AAGATGGAAGACTCTGGGCTGGAGATCAGATCTTAGAGGTGAATGGAATTGACTTGAGAAAGGCCACACA  
 TGATGAAGCAATCAATGCTCTGAGACAGACGCCACAGAGAGTGGCCTGACACTTACAGAGATGAGGCC  
 CCATACAAAGAGGAGGAAGTGTGTGACACCCTCACTATTGAGCTGCAGAAGAAGCCGGAAAAAGGCTAG

GATTAAGTATTGTTGGTAAAAGAAACGATACTGGAGTATTTGTGTGACACATTGTCAAAGGAGGAATTGC  
 AGATGCCGATGGAAGACTGATGCAGGGAGACCAGATATTAATGGTGAATGGGGAAGACGTTCTGTAATGCC  
 ACCCAAGAAGCGGTTGCCGCTTTGCTAAAGGTGAGTGAAGGCAGCCTGTCATCTTTCACTTTTCCACTCT  
 CTGGATCCAGTACATCTGAGTCACTGGAAGTAGCTCAAAGAAGAATGCATTGGCATCTGAAATACAGGG  
 ATTAAGAACAGTCGAAATGAAAAAGGCCCTACTGACTCACTGGGAATCAGCATCGCTGGAGGAGTAGGC  
 AGCCCCATTGGTATGTGCCTATATTTATTGCAATGATGCACCCAACCTGGAGTTGCAGCACAGACCCAAA  
 AACTCAGAGTTGGGATAGGATTGTACCACATCTGTGCCACATCCACTGAGGGCATGACTCACACCCAAAGC  
 AGTTAACCTACTGAAAAATGCATCTGGCTCCATTGAAATGCAGGTGGTTGCTGGAGGAGACGTGAGTGTG  
 GTCACAGGTCATCAGCAGGAGCCTGCAAGTTCAGTCTTTCTTTCACTGGGCTGACGTCAAGCAGTATAT  
 TTCAGGATGATTTAGGACCTCCTCAATGTAAGTCTATTACACTAGAGCGAGGACCAGATGGCTTAGGCTT  
 CAGTATAGTTGGAGGATATGGCAGCCCTCATGGAGACTTACCCATTTATGTTAAAACAGTGTGTCAAAAG  
 GGAGCAGCCTCTGAAGACGGACGTCTGAAAAGGGCGATCAGATCATTGCTGTCAATGGGCAGAGTCTAG  
 AAGGAGTCACCCATGAAGAAGCTGTTGCCATCCTTAACCGACAAAAGGCCTGCACTTTGATGGTTCT  
 CTCT

ACGCGTACGCGGCCGCTCGAG – GFP Tag – GTTTAA

**Protein Sequence:**

>RG235357 representing NM\_001261407  
 Red=Cloning site Green=Tags(s)

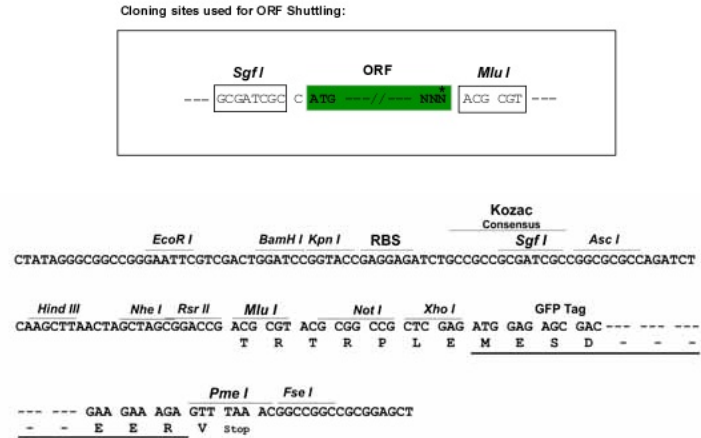
MLEAIDKNRALHAAERLQTKLRERGDVANEDKLSLLKSVLQSPLFSQILSLQTSVQQLKDQVNIATSATS  
 NIEYAHVPHLSPAVIPTLQNESFLLSPNNGNLEALTGPGIPHINKPACDEFDQLIKNMAQGRHVEVFEL  
 LKPPSSGLGFSVVGRLRSENRGELGIFVQEIQEGSVAHRDGRKLETQDILAINQALDQITHTQQAISILQ  
 KAKDVTQVLVIARGSLPQLVSPIVSRSPSAASTISAHSNPVHWQHMETIELVNDGSGLFGGIIGGKATGVI  
 VKTILPGGVADQHGRLLCSGDHILKIGDIDLAGMSSEQVAQVLRQCGNRVKLMIARGAIEERTAPTALGIT  
 LSSSPTSTPELRVDASTQKGESETFDVELTKNVQGLGITIAGYIGDKKLEPSGIFVKSITKSSAVEHDG  
 RIQIGDQIIAVDGTNLQGFNTQQAVEVLRHTGQTVLLTLMRRGMKQEAELMSREDVTKDADLSPVNASII  
 KENYEKDEDFLSSSTRNTNLPTEEEGYPLL SAEIEEIEDAQKQEAALLTKWQRIMGINYEIVVAHVSKFS  
 ENSGLGISLEATVGHFIRSVLPEGPVGHSGKLFSGDELLEVNGITLLGENHQDVVNILKELPIEVTMVC  
 CRRTVPPTTQSELDLDCDIELTEKPHVDLGEFVIGSSETEPVLAMTDAGQSTEEVQAPLAMWEAGIQH  
 IELEKGSKGLGFSILDYQDPIDPASTVIIIRSLVPGGIAEKDGRLLPGDRLMFVNDVNLNSSL EEA  
 LKGAAPSGTVRIGVAKPLPLSPEEGYVSAKEDSFLYPPHSC EEAAGLADKPLFRADLALVGTNDADLVDEST  
 FESPSPENDSIYSTQASILSLHGSSCGDGLNYGSSLPSSPKDVIENSCDPVLDLHMSLEELYTQNLQ  
 RQDENTPSVDISMGPASGFTINDYTPANAIEQQYECENTIVWTESHLPSEVISSAELPSVLPDSAGKGE  
 YLLEQSSLACNAECVMLQNVSKESFERTINIAGNSSLGMTVSANKDGLGMIVRSIIHGGAISRDRGRIAI  
 GDCILSINEESTISVTNAQARAMLRRHSLIGPDIKITYVPAEHLEEFKISLQQSGRVMALDIFSSYTR  
 DIPELPEREEGEESELQNTAYSNNWQPRRVELWREPSKSLGISIVGGRGMSRLSNGEVMRGIFIKHV  
 LEDSPAGKNGTLKPGDRIVEVDGMDLRDASHEQAVEAIRKAGNPVFMVQSIINRPRAPSQSESEPEKAP  
 LCSVPPPPSAFAEMGSDHTQSSASKISQDVDEKDEFGYSWKNIRERYGTLTGELHMI ELEKHSGLGLS  
 LAGNKDRSRMSVFI VIGIDPNGAAGKDGRLQIADELLEINGQILYGRSHQNASSIIKCAPSKVKIIFIRNK  
 DAVNQMAVCPGNAVEPLPSNSENLNKETEPTVTTSDAAVDLSSFKNVQHLELPKDQGGGLIAISEEDTL  
 SGVVIKSLTEHGVAATDGRLLKVGQDQILAVDDEIVVGYPIEKFISLLKTAKMTVKLTIHAENPDSQAVPSA  
 AGAASGEKKNSSQSLMVPQSGSPEPESIRNTSRSTPAIFASDPATCPIIPGCETTIEISKGRITGLGLSI  
 VGGSDTLGAIIEHEVYEEGAACKDGRLLWAGDQILEVNGIDLKATHDEAINVLRQTPQRVRLTYRDEA  
 PYKEEEVCDTLTIELQKPKGKGLLSIVGKRNDTGVFVSDIVKGGIADADGRLMQGDQILMVNGEDVRNA  
 TQEAVALLLKVSEGLSSFTFPLSGSSTSELESSKKNALASEIQGLRTVEMKKGPTDSLGISIAGGVG  
 SPLGDVPIFIAMMHPGVAQAQTKLRVGDRIVTICGTSTEGMHTQAVNLLKNASGSIEMQVAVAGGDVSV  
 VTGHQEPASSSLSFTGLTSSSIFQDDLGPQCKSITLERGPDGLGFSIVGGYGSPPHGDLPYVKTVFAK  
 GAASEDGRLLKRGDQIIAVNGQSLEGVTHEEAVALKRTKGTVTLMVLS

TRTRPLE – GFP Tag – V

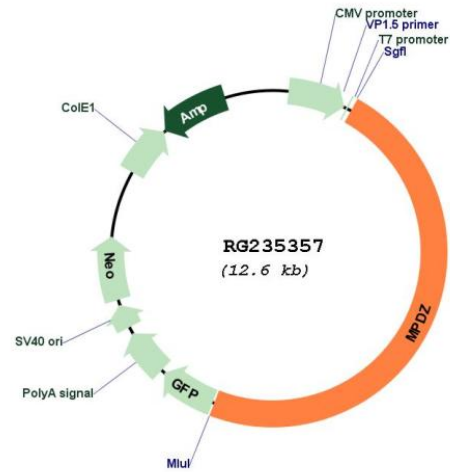
**Restriction Sites:**

Sgfl-MluI

## Cloning Scheme:



## Plasmid Map:



ACCN: NM\_001261407

ORF Size: 6024 bp

OTI Disclaimer: The molecular sequence of this clone aligns with the gene accession number as a point of reference only. However, individual transcript sequences of the same gene can differ through naturally occurring variations (e.g. polymorphisms), each with its own valid existence. This clone is substantially in agreement with the reference, but a complete review of all prevailing variants is recommended prior to use. [More info](#)

OTI Annotation: This clone was engineered to express the complete ORF with an expression tag. Expression varies depending on the nature of the gene.

<b>Components:</b>	The ORF clone is ion-exchange column purified and shipped in a 2D barcoded Matrix tube containing 10ug of transfection-ready, dried plasmid DNA (reconstitute with 100 ul of water).
<b>Reconstitution Method:</b>	<ol style="list-style-type: none"><li>1. Centrifuge at 5,000xg for 5min.</li><li>2. Carefully open the tube and add 100ul of sterile water to dissolve the DNA.</li><li>3. Close the tube and incubate for 10 minutes at room temperature.</li><li>4. Briefly vortex the tube and then do a quick spin (less than 5000xg) to concentrate the liquid at the bottom.</li><li>5. Store the suspended plasmid at -20°C. The DNA is stable for at least one year from date of shipping when stored at -20°C.</li></ol>
<b>RefSeq:</b>	<u>NM_001261407.2</u>
<b>RefSeq Size:</b>	7526 bp
<b>RefSeq ORF:</b>	6027 bp
<b>Locus ID:</b>	8777
<b>UniProt ID:</b>	<u>Q75970</u>
<b>Cytogenetics:</b>	9p23
<b>Protein Pathways:</b>	Tight junction
<b>Gene Summary:</b>	The protein encoded by this gene has multiple PDZ domains, which are hallmarks of protein-protein interactions. The encoded protein is known to interact with the HTR2C receptor and may cause it to clump at the cell surface. Multiple transcript variants encoding different isoforms have been found for this gene. [provided by RefSeq, Aug 2015]