

## Product datasheet for **RG235355**

### DSCAM (NM\_001271534) Human Tagged ORF Clone

#### Product data:

Product Type:	Expression Plasmids
Product Name:	DSCAM (NM_001271534) Human Tagged ORF Clone
Tag:	TurboGFP
Symbol:	DSCAM
Synonyms:	CHD2; CHD2-42; CHD2-52
Mammalian Cell Selection:	Neomycin
Vector:	pCMV6-AC-GFP (PS100010)
E. coli Selection:	Ampicillin (100 ug/mL)
ORF Nucleotide Sequence:	>RG235355 representing NM_001271534 Red=Cloning site Blue=ORF Green=Tags(s)

TTTTGTAATACGACTCACTATAGGGCGGCCGGAATTCGTCGACTGGATCCGGTACCGAGGAGATCTGCC  
GCC**CGATCGCC**

ATGTGGATACTGGCTCTCTCCTTGTCCAGAGCTTCGCGAATGTTTTAGTGAAGACCTACACTCCAGCC  
TCTACTTTGTCAATGCATCTCTGCAAGAGGTAGTGTGGCCAGCACCACGGGACTCTGGTGCCCTGCC  
CGCAGCAGGCATCCCTCTGTGACTCTCAGATGGTACCTAGCCACGGGCGAGGAGATCTACGATGTCC  
GGGATCCGCCACGTCCACCCCAACGGCACTCTCCAAATTTCCCTTCCCTCCTCAAGCTTCAGTACCT  
TAATCCATGATAATACTTATTATTGCACAGCTGAAAATCCTTCAGGAAAATTAGAAGTCAGGATGTCCA  
CATCAAGGCTGTTTTACGGGAGCCCTATACAGTCCGTGTGGAGGACCAGAAAACCATGAGAGGCAATGTT  
GCGGTCTTCAAGTGCATTATCCCTCCTCGGTGGAGGCGTACATCACTGTCTCATGGGAGAAAGACA  
CTGTTTCACTTGTCTCAGGATCTAGATTTCTATCACATCCACGGGAGCCTTGTATATAAAGATGTACA  
GAATGAAGATGGATTGTATAACTACCGCTGCATCACGCGGCATCGATACACCGGAGAGACGAGGCAGAGC  
AACAGCGCCAGACTTTTTGTATCAGACCCAGCGAACTCAGCCCCATCCATACTGGATGGGTTTGACCATC  
GCAAAGCCATGGCTGGGCAGCGTGTGGAGCTGCCTTGCAAAGCGCTCGGGCACCTGAGCCAGATTACCG  
CTGGCTGAAGGACAACATGCCCTGGAATTTTCAGGGAGGTTCCAGAAGACCGTGACGGGCTGCTCATT  
GAGAACATTCGCCCTCGGACTCAGGCAGCTATGTTTGTGAAGTGTCCAACAGATACGGAAGCTGTAAGG  
TGATAGGCCGCTGTACGTGAAACAGCCACTGAAAGCCACCATCAGTCCCAGGAAGGTTAAAAGCAGCGT  
GGGTAGCCAAGTTTCTTGTCTGCAGCGTGACAGGAACTGAGGACCAGGAACTCTCCTGGTACCCTCAAT  
GGTGAATCCTCAACCCTGGAAAAATGTGAGGATCACAGGGATCAACCAGAAAACCTTATAATGGATC  
ACATGGTCAAAAGTGACGGGGCGCATACCAGTCTTTGTGCGCAAGGACAAGCTGTCCGCTCAAGACTA  
TGTGCAGTGGTCTTGAAGATGGAACCTCCAAAATTTTCTGCCTTTAGTGAAAAGGTGGTGAAGTCCA  
GCAGAGCCGTTTCCCTTATGTGCAACGTGAAGGGAACACCTTTGCCACGATCACGTGGACCCTGGACG  
ATGACCCGATTCTCAAGGTGGCAGTACCAGTACAGCCAGATGATCACGTGGAGGGGAACGTGGTCCAG  
CTACCTGAACATCTCAGCTCCAGGTCGGGACGGGGAGTCTACCGCTGCACTGCCAACAACTCGGC



[View online »](#)

GGAGTCGTCCTGTACCAGGCTCGAATAAACGTAAGAGGGCCTGCAAGCATTTCGACCAATGAAAAACATCA  
 CAGCAATAGCAGGACGGGACACATACATTCACTGTCTGTGATTGGCTATCCGTATTACTCCATTAATG  
 GTACAAGAACTCTAACCTGCTTCTTTCAACCACCGCCAAGTGGCATTGAGAACAATGAACTCTTAAA  
 CTTTCAGATGTGCAAAAGGAAGTGGACGAGGGGAGTACACGTGCAACGTGTTGGTTCAACCACAACTCT  
 CCACCAGCCAGAGCGTCCACGTGACCGTAAAGTTCGCCCTTTCATACAACCTTTGAGTTTCAAGATT  
 CTCCATTGGGCAGCGGGTCTTCATCCCTGTGTGTGGTCTCAGGGGACTTACCCATCAGATCACCTGG  
 CAGAAGGATGGCCGGCCAATCCCTGGGAGCCTGGGGTGACCATTGACAATATTGACTTCACGAGCTCCT  
 TGAGGATTTCCAATCTCTCGCTCATGCACAATGGGAATTACACCTGCATAGCCCGGAATGAGGCCGCCG  
 TGTGGAGCACAAAGCCAGTTGATTGTCAGAGTTCCTCCCAAGTTTGTGGTTTCAGCCACGGGACCAGGAC  
 GGGATTTATGGCAAAGCAGTTCCTCAATTGTTCTGCTGAGGGTTACCCTGTACCTACCATCGTGTGGA  
 AATTCTCTAAAGGTGCTGGGGTCCCGAGTTCAGCCAATTGCCCTAAATGGCCGAATCCAAGTTCTCAG  
 CAATGGGTCGTTGCTGATCAAGCATGTCGTGGAGGAAGACAGTGGCTACTACCTGCAAGGTGACCAAC  
 GATGTGGGCGCAGACGTGAGCAAGTCCATGTACCTCACGGTAAAATTCTCGCATGATAACATCCTATC  
 CAAATACTACCCTGGCCACGCAGGGGCAGAAAAGGAGATGAGCTGCACGGCGCATGGTGAAGGCCAT  
 TATAGTCCGCTGGGAGAAGGAGGACCGAATCATAACCCTGAGATGGCCGTTATCTTGTGTCCACCAAG  
 GAGGTGGGAGAAGAGGTGATTTCTACTCTGCAGATTTTGCCAACCTGTGAGAGAAGATTCTGGTTCTTTT  
 CCTGCCATGCTATTAATTCTTATGGGGAGGACCGTGAATAAATCAGCTCACAGTGAAGAGCCCCCAGA  
 CCCTCCGAAATTGAGATCAAAGATGTCAAAGCACGCACAATTACGCTCAGGTGGACCATGGGGTTGAT  
 GGAAACAGTCCCATCACAGGCTACGATATTGAATGCAAAAATAAATCAGACTCCTGGGATTCTGCTCAGA  
 GAACCAAAGATGTTTCCCTCAGCTGAACCTCGGCCACCATCATTGATATCCACCTTCTCCACCTACAG  
 CATCCGCATGTACCCAAGAACCGGATTGGCAAGAGCGAGCCAGCAACGAGCTCACCATCACGGCGGAC  
 GAGGCAGCTCCTGATGGTCCACCTCAGGAAGTTCACCTGGAGCTATATCATCTCAGAGCATCAGGGTCA  
 CATGGAAGGCTCCAAGAAACATTTGCAAAAATGGGATTATCCGTGGCTACCAAAATAGTTACCGAGATA  
 CAGCACTGGGGTAACTTCCAATTCAACATTATCAGTGTGACACACAGCGGGGACAGTGAGGTTTACACC  
 CTGGACAACCTGAATAAGTTCACCTCAGTACGGCCTGGTGGTGCAGGCCTGTAACCGGGCCGGCACGGGGC  
 CTTCTTCTCAGGAAATCATCACCACCACTCTCGAGGATGTGCCAGTTACCCCCCGAAAATGTCCAAGC  
 CATAGCAACATCACCAGAAAGCATATCAATATCTGGTCCACACTTTCCAAGGAAGCCTTGAATGGAATT  
 CTCCAGGGGTTTCAGAGTCACTTACTGGGCCAACCTCATGGACGGAGAGCTGGGTGAGATTTAAAACATCA  
 CCACCACACAGCCTTCACTGGAGCTGGACGGGCTGAAAAGTACACCAACTACAGCATCCAGGTGCTGGC  
 CTTACCCCGCGCAGGAGACGGGGTCAAGAGTGAGCAGATCTTACCCGGACCAAAGAGGATGTTCCAGGT  
 CCTCCCGGGGTGTAAGGCAGCGGGCCTCAGCCTCCATGGTCTTTGTGCTCTGGCTTCCCCCTCTCA  
 AGCTGAACGGGCATCATCCGAAAGTACACTGTATTCTGCTCCACCCCTATCCACAGTGATCAGCGAGTT  
 TGAGGCCTCTCCCGACTCGTTTTCTACAGAATCCCAACCTGAGTAGGAATCGTCAGTACAGCGTCTGG  
 GTGGTGGCTGTTACTTACGCCGGAAGAGGCAACAGCAGTGAATCATCACAGTTCGAGCCACTAGCAAAAAG  
 CTCCTGCACGAATCCTGACCTTCACTGGGACAGTGACTACTCCATGGATGAAAGACATTGTCTTGCCTTG  
 TAAGGCTGTTGGGGACCTTCTCCTGCAGTCAAATGGATGAAAGACAGTAACGGGACACCCAGTCTAGTA  
 ACGATTGATGGGCGGAGGAGCATCTTTAGCAACGGAAGCTTCAATATTTCGCACGGTGAAGCAGAAGACT  
 CCGGCTATTACAGCTGCATTGCCAATAACAACCTGGGATCTGATGAAATATTTTTAACTTACAAGTACA  
 AGTCCACCAGATCAGCCTCGGTTACAGTCTCCAAGACCAGTCTTCCATCACCTTCTTGGCTC  
 CCTGGAGACAACGGGGGAGCTCTATCAGAGGATACATACTGCAGTACTCCGAGGACAATAGTGAGCAGT  
 GGGGGAGTTTTCCAATCAGCCCCAGCGAAGCTTCTATCGCTTGAAAATCTCAAATGTGGGACTTGGA  
 TAAGTTACACTGACAGCCAAAATGGAGTGGGCCAGGGCGCATAAGTGAATCATAGAAGCAAAGACC  
 TTAGGAAAAGAGCCCAGTTCTCAAAGGAGCAGGAGCTGTTTGCCAGCATCAACACCACACGCGTGAGGC  
 TGAACCTCATTGGCTGGAATGATGGCGGTGCCCATCACCTCCTTCACTAGAGTACAGGCCCTTTGG  
 GACCACAGTTTGGACCACAGCTCAGAGGACCTCTCTCCAAGTCTACATCCTGTATGACCTGCAGGAA  
 GCCACCTGGTATGAGCTGCAGATGCGGGTGTGCAACAGTGCAGGGTGCAGGAGGAGGAGGAGGAGGCT  
 CTACGCTGAACACTACGATGGCAGTACAATCCTCCACTCATTAAAGTCAAGTGTCCAAAACGAAGAAGGGCT  
 GACGACCAACGAGGGGCTCAAGATGCTGGTGACCATCTCCTGTATCCTGGTGGGGTCTTGTGCTGTTTT  
 GTGCTCCTGCTGGTTGTGCGGAGGAGGGCGGGAGCAGAGGCTAAAGAGGCTGCGAGATGCAAAGAGTT  
 TAGCTGAAATGCTCATGAGTAAGAATACCCGGACTTCAGATACGTTAAGCAAGCAACAGCAGACCCTGCG  
 AATGCACATCGACATACCCAGGGCTCAGCTTTTGATTGAAGAGAGAGACAGGATGGAGACCATTGATGAT  
 CGCTCCACGGTTCTGTTGACGGATGCTGACTTTGGAGAGGCAGCTAAGCAGAAGTCCCTGACGGTCACTC

ACACGGTCCATTACCAATCGGTGTCTCAGGCCACTGGGCCCTTAGTGGATGTTTCAGACGCTCGGCCGGG  
AACGAATCCCACCACCAGGAGGAATGCCAAGGCTGGGCCACAGCGAGAAACCGCTATGCCAGCCAGTGG  
ACCCTCAACCGACCCACCCACCATCTCAGCACACCCCTACCACAGACTGGAGGCTGCCAACACCCA  
GGGCTGCAGGATCAGTAGACAAAGAGAGCGACAGTTACAGCGTCAGCCCCTCGAAGACACAGATCGAGC  
AAGAAGCAGCATGGTCTCCACAGAAAGTGCCTCCTCCACTACGAAGAACTGGCCAGGGCCTACGAACAC  
GCCAAGATGGAAGAGCAACTGAGGCACGCCAAGTCCACATCACGGAGTGCTTCATATCAGACACGTCAT  
CGGAGCAGTTGACGGCAGGGACAAATGAGTACACGGACAGTCTGACCTCCAGCACCCCTCCGAATCGGG  
AATCTGCAGGTTCACTGCATCTCCCCAAACCTCAGGATGGAGGAAGAGTAATGAATATGGCAGTTCCA  
AAGGCACATCGGCCAGGTGGTCCAGGCACCAGCAGGGACCTGAGCTTAGGACAAGCATGCTTGAACCTC  
AGAAAAGCCGGACCCTGAAGCGCCCCACGGTCTGGAGCCATCCCGATGGAAGCCGCTCCTCCGCTC  
CTCCACGAGAGAAGGACAGTCGTGGCAGCCGGGGCCGTGGCCACATTACCTCAGCGGGAGGAGCAGAG  
CTGGGACAGGCAGCTAAATGAGCAGCTCCAAGAATCACTGCTCGACTCCCGGGCCATTTGAAAGGAA  
ACAATCCTTACGCAAAATCTTACACCCTGGTA

AGCGGACCGACGCGTACGCGGCCGCTCGAG - GFP Tag - GTTTAA

**Protein Sequence:**

>RG235355 representing NM\_001271534

Red=Cloning site Green=Tags(s)

MWILALSLFQSFANVFSEDLHSSLYFVNASLQEVVFASTTGTLVPCPAAGIPPVTLRWYLATGEEIYDVP  
GIRHVHPNGTLQIFPPPPSSFSTLIHDNTYYCTAENPSGKIRSQDVHIKAVLREPYTVRVEDQKTRMGNV  
AVFKCIIPSSVEAYITVVSWEKDTVSLVSGSRFLITSTGALYIKDVQNEGLYNYRCITRHYRTGETRQS  
NSARLFVSDPANSAPSILDGFDHRKAMAGQRVELPCKALGHPEPDYRWLKDNPMLLESGRFQKTVTGLLI  
ENIRPSDSGSYVCEVSNRYGTAKVIGRLYVQPLKATISPRKVKSSVGSQVLSVCSVTGTEDQELSWYRN  
GEILNPGKNVRITGINHENLIMDHMVKSDGGAYQCFVRKDKLSAQDYVQVLEDGTPKIIISAFSEKVVSP  
AEPVSLMCNVKGTPLPTITWTLDDDPILKGGSHRISQMITSEGNVSYLNISSSQVDRGGVYRCTANNSA  
GVVLYQARINVRGPASIRPMKNITAIAGRDTYIHCVRVIGYPYYSIKWYKNSNLLPFNHRQVAFENNGTLK  
LSDVQKEVDEGEYTCNVLVQPQLSTSQSVMHTVKVPPFIQPFEPFRFSIGQRVFIQVSVVSGDLPITITW  
QKDRPIPGLGVTIDNIDFTSSLRISNLSLMHNGNYTCIARNEAAVEHQSQLIVRVPKFFVQPRDQD  
GIYGKAVILNCSAEGYPVPTIIVKFKSGAGVPPQFQPIALNGRIQVLSNGSLLIKHVVEEDSGYLLCKVSN  
DVGADVSKSMYLVKIPAMITSYPNNTLATQGGQKEMSCSTAHGKPIIVRWEKEDRIINPEMAYLVSTK  
EVGEEVISTLQILPTVREDSGFFSCHAINSYGEDRGIIQLTVQEPPDPEIEIKDVKARTITLRTWGMFD  
GNSPITGYDIECKNKSDSWDAQRKDVSPQLNSATIIDIHPSSTYSIRMYAKNRIGKSEPSNELTITAD  
EAAPDGGPPQEVHLEPISSQSIRVTWKAPKHLQNGIIRGYQIGYREYSTGGNFQFNIISVDTSGDSEVYT  
LDNLNKFQYGLVVQACNRAGTGPSSEIITTTLEDVPSYPPENVQAIATSPESISISWSTLSKEALNGI  
LQGFVVIYWANLMDGELGEIKNITTTQPSLELDGLEKYTNYSIQVLAFTAGDGRVSEQIFTRTKEDVPG  
PPAGVKAASASAMVFWLPLKLNIGIRKYTVFCSHPYPTVISEFEASPDSSYRIPNLNRNQYSVW  
VAVTSAGRGNSEIITVEPLAKAPARILTFSGVTTPWPKDIVLPCKAVGDPSPAVKWMKDSNGTPSLV  
TIDGRRSIFSNGSFIIRTVKAEDSGYYSIANNWGSDEIILNLQVQVPPDQPRLTVSKTSSSITLSWL  
PGDNGGSSIRGYILQYSEDNSEQWGSFPIPSERSYRLENLKCCTWYKFTLTAQNGVGPRISEIEAKT  
LGKEPQFSKEQELFASINTTRVRLNLIGWNDGGCPITSFTLEYRPFGTTVWTTAQRSTLSKSYILYDLQE  
ATWYELQMRVCNSAGCAEKQANFATLNYDGSTIPPLIKSVVQNEEGLTTNEGLKMLVTISICILVGVLLL  
VLLL VVRRRRRREQLKRLRDAKSLAEMLSKNTRTSDTL SKQQQLRMHIDI PRAQLL IEERDTMETIDD  
RSTVLL TDADFGEAAKQKSLTVHTVHYQSVSQATGPLVDVSDARPGTNPTRRNAKAGPTARNRYASQW  
TLNRPHPTISAHTLTTDWRLPTPRAAGSVDKESDSYSVSPSQDTRARSSMVSTESASSTYEELARAYEH  
AKMEEQLRHAKFTITECFISDTSSEQLTAGTNEYTDSLTSSTPSESGICRFASPPKPDGGRVMNMAVP  
KAHRPGGPGTSRDLSLQACLEPQKSRTLKRPTVLEPIPEMAASSASSTREGQSWQP GAVATLPQREGAE  
LQAAKMSSSQESLLDSRGHLKGNPNYAKSYTLV

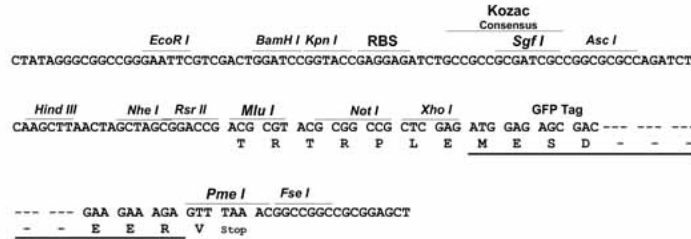
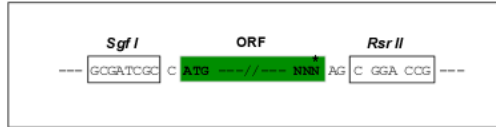
SGPTRRRLE - GFP Tag - V

**Restriction Sites:**

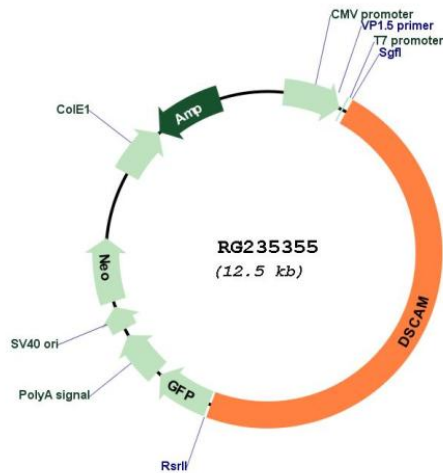
Sgfl-RsrII

Cloning Scheme:

Cloning sites used for ORF Shuttling:



Plasmid Map:



ACCN: NM\_001271534

ORF Size: 5982 bp

OTI Disclaimer: The molecular sequence of this clone aligns with the gene accession number as a point of reference only. However, individual transcript sequences of the same gene can differ through naturally occurring variations (e.g. polymorphisms), each with its own valid existence. This clone is substantially in agreement with the reference, but a complete review of all prevailing variants is recommended prior to use. [More info](#)

OTI Annotation: This clone was engineered to express the complete ORF with an expression tag. Expression varies depending on the nature of the gene.

<b>Components:</b>	The ORF clone is ion-exchange column purified and shipped in a 2D barcoded Matrix tube containing 10ug of transfection-ready, dried plasmid DNA (reconstitute with 100 ul of water).
<b>Reconstitution Method:</b>	<ol style="list-style-type: none"><li>1. Centrifuge at 5,000xg for 5min.</li><li>2. Carefully open the tube and add 100ul of sterile water to dissolve the DNA.</li><li>3. Close the tube and incubate for 10 minutes at room temperature.</li><li>4. Briefly vortex the tube and then do a quick spin (less than 5000xg) to concentrate the liquid at the bottom.</li><li>5. Store the suspended plasmid at -20°C. The DNA is stable for at least one year from date of shipping when stored at -20°C.</li></ol>
<b>RefSeq:</b>	<u>NM_001271534.3</u>
<b>RefSeq Size:</b>	7055 bp
<b>RefSeq ORF:</b>	5985 bp
<b>Locus ID:</b>	1826
<b>Cytogenetics:</b>	21q22.2
<b>Protein Families:</b>	Transmembrane
<b>Gene Summary:</b>	This gene is a member of the immunoglobulin superfamily of cell adhesion molecules (Ig-CAMs), and is involved in human central and peripheral nervous system development. This gene is a candidate for Down syndrome and congenital heart disease (DSCHD). A gene encoding a similar Ig-CAM protein is located on chromosome 11. Alternatively spliced transcript variants encoding multiple isoforms have been observed for this gene. [provided by RefSeq, Oct 2012]