

Product datasheet for **RG235349**

CACNA1F (NM_001256790) Human Tagged ORF Clone

Product data:

Product Type:	Expression Plasmids
Product Name:	CACNA1F (NM_001256790) Human Tagged ORF Clone
Tag:	TurboGFP
Symbol:	CACNA1F
Synonyms:	AIED; Cav1.4; Cav1.4alpha1; COD3; COD4; CORDX; CORDX3; CSNB2; CSNB2A; CSNBX2; JM8; JMC8; OA2
Mammalian Cell Selection:	Neomycin
Vector:	pCMV6-AC-GFP (PS100010)
E. coli Selection:	Ampicillin (100 ug/mL)
ORF Nucleotide Sequence:	>RG235349 representing NM_001256790 Red=Cloning site Blue=ORF Green=Tags(s)

TTTTGTAATACGACTCACTATAGGGCGGCCGGAATTCGTCGACTGGATCCGGTACCGAGGAGATCTGCC
GCC**CGATCGCC**

ATGTCGGAATCTGAAGGCGGAAAGGTGAGAGAATCCTTCCATCCCTGCAGACCTTGGAGCAAGCATCG
TGGAGTGAAGCCCTTCGACATCCTCATCTGCTGACCATCTTTGCCAACTGCGTGGCCCTGGGAGTTTA
CATCCCCCTCCCTGAGGACGACTCCAACACTGCCAACCACAACCTGGAGCAGGTGGAGTACGTATTCCTG
GTGATTTTCACTGTGGAGACGGTCTCAAGATCGTGGCTACGGGCTGGTGTCCACCCAGCGCTACA
TCCGCAATGGCTGGAACCTACTCGACTTCATCATCGTCGTGGTGGGCTGTTAGCGTTCGCTGGAGCA
GGGCCCCGGACGCCAGGCGACGCCCGCACACCGGGGAAAGCCAGGAGGCTTCGATGTGAAGGCATTG
AGGGCGTTTCGGGTGCTGCGGCCACTGAGGCTGGTGTCTGGGTCCCGAGCTGCACATAGTGCTCAATT
CCATCATGAAGGCTCTGGTGCCGCTGCTGCACATTGCACTGCTCGTCTTTCGTATCATATTTATGC
CATCATTGGGCTCGAGCTGTTCCCTTGGACGAATGCACAAGACGTGCTACTTCTGGGATCCGACATGGAA
GCGGAGGAGGACCCATCGCCCTGTGCGTCTTCGGGATCAGGGCGTGCCTGCACGCTGAACCAGACTGAGT
GCCGCGGGCGCTGGCCAGGGCCAATGGAGGCATCACAACTTTGACAACTTCTTCTTCGCCATGCTGAC
AGTCTTCCAGTGTGTACCATGGAAGGCTGGACCGATGTGCTCTACTGGATGCAAGATGCCATGGGGTAT
GAACTGCCCTGGGTGACTTTGTGAGCCTGTGTCATCTTTGGTCTTCTTCGTCTCAACCTTGTGCTTG
GCGTCTGAGTGGGGAGTTTCCAAGGAGAGAGAAAAGCGAAAGCTCGCGGGGACTTCCAGAAGCAGCG
GGAGAAGCAGCAGATGGAGGAAGACCTCGGGGCTACCTGGACTGGATCACTCAAGCCGAAGAGCTGGAC
ATGGAGGACCCCTCCGCGATGACAACCTTGGTTCTATGGCTGAAGAGGGCCGGGCGGCCATCGGCCAC
AGCTGGCCGAGCTGACCAATAGGAGGCGTGGACGTCTGCGCTGGTTCAGTCATTCTACTGCTCCACACA
CTCCACCAGCAGCCATGCCAGCCTCCCAGCCAGTGACACCGGTTCCATGACAGAGACCCAAGGCGATGAG
GATGAGGAGGAGGGGCTCTGGCCAGCTGTACACGCTGCCTAAACAAGATCATGAAAACCAGAGTCTGCC
GCCGCTCCGCCGAGCCAACCGGTCTTCGGGCACGCTGCCGTCGGGCAGTGAAGTCCAATGCCTGCTA



[View online »](#)

CTGGGCTGTGCTGTTGCTCGTCTTCTCAACACGTTGACCATCGCCTCTGAGCACCACGGGCAGCCTGTG
 TGGCTCACCCAGATCCAGGAGTATGCCAACAAAGTGTGCTCTGTCTGTTACCGTGGAGATGCTTCTCA
 AATTGTACGGTCTGGGCCCTCTGCCTATGTGTCTTCTTCTTCAACCGCTTTGACTGCTTTGTGGTCTG
 TGGGGGCATCCTAGAGACCACCTTGGTGGAGGTGGGTGCCATGCAGCCCTTGGGCATCTCAGTGTCCGA
 TGTGTGCGCCTCCTCAGGATCTTAAGGTCACCAGACACTGGGCTTCTCTGAGCAATCTGGTGGCATCCC
 TGCTCAATTCAATGAAATCCATCGCATCCTTGTCTTCTCTCTTCTCTTCTTATCATTATCTTCTCCCT
 GCTTGGCATGCAGCTGTTTGGGGCAAGTTCAACTTTGACCAGACCACACCAAGCGAAGCACCCTTGGAC
 AGTTTCCCCAGGCCCTCCTCACTGTCTTTCAGATCCTGACAGGTGAGGACTGGAACGTGGTGCATGTATG
 ATGGTATCATGGCATATGGTGGCCCTTCTCCAGGAATGTTGGTGTGCATCTATTTATCATTCTCTT
 CATCTGTGGCACTACATCCTGTTGAACGTGTTTCTTGCCATTGCTGTGGACAACCTGGCCAGTGGAGAT
 GCAGGCACTGCCAAGGACAAGGGCGGGGAGAAGAGCAATGAGAAGGATCTCCACAGGAGAATGAAGGCC
 TGGTGCCTGGTGTGGAGAAAGAGGAAGAGGAGGGTGAAGGAGGGAAGGAGCAGACATGGAGGAGGAGGA
 GGAGGAGGAAGAAGGAAGAAGAGGAAGAAGAGGAAGAGGGTGCAGGGGGTGTGAACTCCTGCAGGAA
 GTTGTACCAAGGAGAAGGTGGTACCCATCCTGAGGGCAGCGCCTTCTTCTGCCTCAGCCAAACCAACC
 CGCTGAGGAAGGGCTGCCACACCCTCATCCACCATCATGTCTTACCAATCTTATCCTGGTGTTCATCAT
 CCTCAGCAGTGTGCTCCCTGGCCGCTGAGGACCCCATCCGAGCCCACTCCTTCCGCAACCATATTCTGGGT
 TACTTCGATTATGCCTTACCTCCATTTTCACTGTGGAGATTCTACTAAAGATGACAGTGTTTGGGGCT
 TCTGCACCGCGGCTCCTTCTGCCGTAGCTGGTTAATATGTTGGATCTGCTGGTGGTCACTGTGCTCCCT
 CATCTCCTTTGGCATCCACTCCAGCGCCATCTCGGTGGTGAAGATTCTGCGAGTACTCCGAGTACTGCGG
 CCCCTCCGAGCCATCAACAGGGCCAAGGGACTCAAGCATGTGGTGCAGTGTGATTTGTGGCCATCCGGA
 CCATCGGAAACATCATGATTGTCAACACTTCTGCAATTTATGTTCCCTGCATCGGGTGCAGCTCTT
 CAAGGGGAAATTTACACCTGCACGACGAGGCCAAACACACCCTCAAGAATGCAAGGGCTCCTTCTCTG
 GTATACCCAGATGGAGACGTGTACGCGCCCTGGTCCGGAGCGGCTCTGGGTCAACAGTATTCAACT
 TTGACAAATGCTCTTTCAGCCATGATGGCCCTGTTCACTGTCTCCACCTTTGAAGGCTGGCCTGCAGTGT
 ATACAAGGCCATCGATGCATATGACAGAGACCACGGCCCATCTATAATTACCGTGTGGAGATCTCAGTG
 TTCTTCTATTGTCTACATCATCATCATTGCGTTCTTCTCATGATGAACATCTTCGTGGGCTTCGTATCATCA
 CTTTCCGTGCCAGGGCGAGCAGGAGTACAAAACCTGTGAGCTGGACAAGAACCAGCGTCAATGTGTGGA
 ATATGCCCTCAAGGCCAGCCACTCCGCCGTTACATCCCCAAGAACCAGCATCAGTATCGTGTGGGCC
 ACTGTGAACCTGCTGCCTTTGAGTACCTGATGTTCTGCTCATCTGCTCAACACAGTTGCCCTAGCCA
 TGCAGCACTATGAGCAGACTGCTCCCTCAACTATGCCATGGACATCCTCAACATGGTCTTCACTGGCCT
 CTTCACTATTGAGATGGTGTCTAAAATCATCGCCTTCAAGCCCAAGCATTACTTCACTGATGCTGGAAC
 AGTTTTGACGCTCTTATTGTGGTGGGCAGCATAGTGGATATTGCCGTCACTGAAGTCAATATGGTGGCC
 ACCTTGGCGAGAGCTCTGAGGACAGTCCCGCATTTCATTACCTTCTTTCGCCTCTTCCGAGTTATGCG
 GCTGGTCAAGCTTCTCAGTAAGGGTGAAGGGATCCGCACATTGCTCTGGACATTCATCAAGTCTTCCAG
 GCCTTGGCCATGTGGCTCTTCTCATCGCAATGATATTCTTATCTATGCCGTCAATGGCATGCAGATGT
 TCGGCAAGGTGGCTCTTCCAGGATGGCACACAGATAAACCGAAACAACAACCTTCCAGACCTTCCACAGGC
 TGTGCTGCTTCTGTTCAAGGTGTGCCACTGGTGAAGGATTTACCTGTGGTAGCAATTTTCCATCG
 CCTATTTCACTAGCTTCTTCTCATGCTCTGTGCTTCTGATCATAAATCTTTTGTGGCTGTGATCATGGA
 CAATTTGATTATCTCACCAGAGATTGGTCCATCCTGGGCCCCATCACCTTGTGAATTAAGAGGATC
 TGGTCTGAATATGACCCTGGGGCAAGGGCCGATCAAACACTTGGATGTGGTGGCCTGCTGAGACGTA
 TCCAGCCCCCTCTGGGATTTGGGAAGCTGTGCCACACCGAGTGGCCTGCAAGAGACTTGTGGCAATGAA
 CATGCCCTCAACTCAGATGGGACGGTACATTCAACGCCACACTCTTGGCCTGGTCCGGACATCCCTG
 AAGATCAAACAGAAGGGAACTGGAGCAAGCCAACCAGGAGCTGCGGATTGTATCAAAGAGTCTGGA
 AGCGGATGAAACAGAAGCTGCTAGATGAGGTATCCCCCACCAGACGAGGAGGAGGTACCCTGGGCAA
 ATTTCTACGCCACATTTCTGATCCAGGACTATTTCCGCAAATTCGGCGGAGGAAAGAAAAGGGCTACTA
 GGCAACGACGCCGCCCTAGCACCTTCTCCGCCCTTCAAGGCTGGTCTGCGGAGCCTGCAGGACTTGGGTC
 CTGAGATGCGGCAGGCCCTCACCTGTGACACAGAGGAGGAGGAAGAAGAGGGGCAGGAGGAGTGGAGGA
 GGAAGATGAAAAGGACTTGGAACTAACAAAGCCACGATGGTCTCCAGCCCTCAGCTCGCCGGGCTCC
 GGGATTTCTGTGCTCTGCTGTGCGGGACAGACTTCCAGATTCACTCTCCTTTGGGCCAGTGTGATG
 ACAGGGGGACTCCACCTCCAGTCCAGCCAGTGTGCCAGGCTGGATCCAACACCCACAGGAGAGGCTC
 TGGGGCTCTATTTTACCATCCAGAAGAAGGAAATTTCTAGCCCAAGGGAACCAAGGGCAAAACAAG

CAAGATGAGGATGAGGAAGTCCCTGATCGGCTTCTACCTAGATGAGCAGGCAGGGACTCCCCGTGCT
 CAGTCTTTTCCACCTCACAGAGCTCAGAGATACATGGATGGGCACCTGGTACCACGCCCGCTGCT
 GCCCCCACACCTGCAGGTGCGGAAGCCCTCTTACCATCCAGTGTCTGCAGCGCCAGGGCAGTTGTGAG
 GATTTACCCATCCCAGGCACCTATCATCGTGGGCGAAATTCAGGGCCCAATAGGGCTCAGGGTCTCTGG
 CAACACCACCTCAGCGGGTTCGGCTCCTGTATGCCCCGCTGTTGTTGGTGAAGAGGGCGCAGCGGGGA
 GGGGTACCTCGGCAGATCCAGTGGCCACTGCGCACCTTACCTGTCTGCACGTGCCTGGAACCCACTCG
 GACCCAGCCATGGGAAGAGGGGAGTCCGACAGCTTGGTGGAGGCTGTGCTTATCTCAGAGGGTCTGG
 GCCTCTTTGCTCAGAGCCACGTTTCGTGGCCCTGGCCAAGCAGGAGATTGCAGATGCCTGTGCGCTGAC
 GCTGGATGAGATGGACAATGCTGCCAGTACCTGCTGGCACAGGGAACCAGCTCTCTATAGCGACGAG
 GAGTCCATCTCTCCCGTTCGATGAGGAGGACTTGGGAGACGAGATGGCTGCGTCCACGCCCTC

ACGCGTACGCGGCCGCTCGAG - GFP Tag - GTTTAA

Protein Sequence:

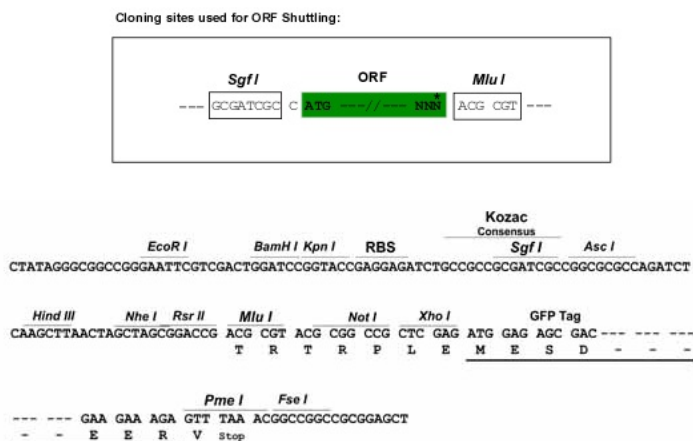
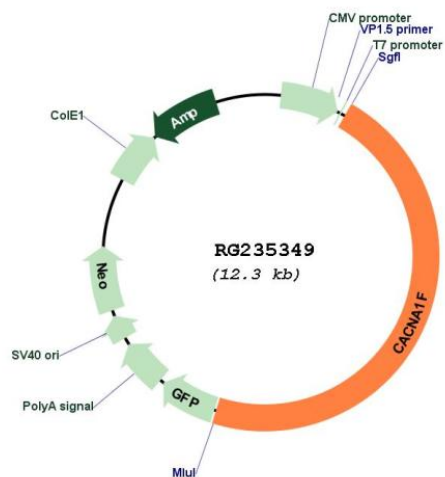
>RG235349 representing NM_001256790
 Red=Cloning site Green=Tags(s)

MSESEGGKERILPSLQTLGASIVEWKPFDILILLTIFANCVLGVYIPFPEDDSNTANHNLEQVEYVFL
 VIFTVETVLKIVAYGLVLHPSAYIRNGWNLDFIIVVVGLFVLLQGPGRPGDAPHTGGKPGGFDVKAL
 RAFRVLRLPLVSGVPSLHIVLNSIMKALVPLLHIALLVFVIIYAIIGLELFLGRMHKTCYFLGSDME
 AEEDPSPCASSGSRACLTNQTECRGRWPGNGGITNFDNFFAMLVFQCVTMEGWDVLYWMQDAMGY
 ELPWVYFVSLVIFGSFFVLNLVLGVLSEFSGEREKAKARGDFQKQREKQMEEDLRGYLDWITQAEELD
 MEDPSADDNLGSMEEGRAGHRPQLAELTNRRRGRRLRWFHSTRSTHSTSSHASLPASDTGSMTEQGD
 DEEEGALASCTRCLNKIMKTRVCRRLRRANRVLRARCRRAVKSNACYWAVLLLVFLNLTIASEHHGQPV
 WLTIQIEYANKVLLCLFTVEMLLKLYGLGPSAYVSSFFNRFDCFVCGGILETTLVEVGAMQPLGISVLR
 CVRLLRIFKVTRHWASLNLVALLNSMKSIASLLLLLFLFIIIFSLGMLFQGGKFNFDQTHTKRSTFD
 TFPQALLTVFQILTGEDWNVVMYDGMAYGGPFFPGMLVCIYFIIILFCGNYILLNVFLAIAVDNLASGD
 AGTAKDKGGEKSNEKDLPQENELVPGVEKEEEEEGARREGADMEEEEEEEEEEEEEEGAGGVELLQE
 VVPKEKVVPIPEGSAFFCLSQTNPLRKGCHTLIHHHVFTNLILVFIILSSVSLAAEDPIRAHSFRNHILG
 YFDYAFTSIFTVEILLKMTVFGAFLHRGSFCRSWFNMLDLLVSVSLISFGIHSASISVVKILRVLRLR
 PLRAINRAKGLKHVVQCVFAIRTIIGNIMIVTLLQFMFACIGVQLFKGKFTCTDEAKHTPQECKGSFL
 VYPDGDVSRPLVRERLWVNSDFNFDNVL SAMMALFTVSTFEGWPALLYKAIDAYAEDHGPIYNYRVEISV
 FFIVYIIIIAIFMMNIFVGFVIIITFRAQGEQEYQNCELDKNQRQCVEYALKAQPLRRYIPKNPHQYRVWA
 TVNSAAFEYLMFLLILLNTVALAMQHYEQTAPFNAMDILNMVFTGLFTIEMVLKIIAFKPKHYFTDAWN
 TFDALIVVGSIVDIAVTEVNNGGHLGESSEDSSRISITFFRLFRVMRLVKLLSKGEGIRTLWTFIKSFQ
 ALPYVALLIAMIFFIYAVIGMQMFGKVALQDGTQINRNNNFQTFPQAVLLLFRCATGEAWQEIMLASLPG
 NRCDPESDFGPGEFTCGSNFAIAYFISFFMLCAFLIINLFAVAVIMDNFDYLTRDWSILGPHHLDEFKRI
 WSEYDPGAKGRIKHLDVALLRRIQPPLGFGKLCPHRVACKRLVAMNPLNSDGTVTFNATLFLVVRTSL
 KIKTEGNLEQANQELRIVIKKIWRMKQKLLDEVIPPPDEEEVTVGKFYATFLIQDYFRKFRRRKEKGLL
 GNDAA PSTSSALQAGLRLQDLGPEMRQALTCDEEEEEEGQEGVEEEDKDLTENKATMVQSARRGS
 GISVSLPVGDRLPDSL SFGPSDDDRGTPSSQPSVPQAGSNTHRRGSGALIFTIPEEGNSQPKGTGQNK
 QDEDEEVPDRLSYLDEQAGTPPCS SVLLPPHRAQRYMDGHLVPRRRLPPTPAGRKPSTFIQCLQRQGSCE
 DLPPIPGTYHRGRNSGPNRAQGSWATPPQRGRLLYAPLLLVEEGAAGEGYLGRSSGPLRTFTCLHVPGTHS
 DPSHGKRGSDSLVEAVLISEGLGFARDPRFVALAKQEIADACRLTLEMDNAASDLLAQGTSSLYSDE
 ESILSRFDEEDLGDEMACVHAL

TRTRPLE - GFP Tag - V

Restriction Sites:

Sgfl-MluI

Cloning Scheme:

Plasmid Map:


ACCN: NM_001256790

ORF Size: 5736 bp

OTI Disclaimer:	The molecular sequence of this clone aligns with the gene accession number as a point of reference only. However, individual transcript sequences of the same gene can differ through naturally occurring variations (e.g. polymorphisms), each with its own valid existence. This clone is substantially in agreement with the reference, but a complete review of all prevailing variants is recommended prior to use. More info
OTI Annotation:	This clone was engineered to express the complete ORF with an expression tag. Expression varies depending on the nature of the gene.
Components:	The ORF clone is ion-exchange column purified and shipped in a 2D barcoded Matrix tube containing 10ug of transfection-ready, dried plasmid DNA (reconstitute with 100 ul of water).
Reconstitution Method:	<ol style="list-style-type: none">1. Centrifuge at 5,000xg for 5min.2. Carefully open the tube and add 100ul of sterile water to dissolve the DNA.3. Close the tube and incubate for 10 minutes at room temperature.4. Briefly vortex the tube and then do a quick spin (less than 5000xg) to concentrate the liquid at the bottom.5. Store the suspended plasmid at -20°C. The DNA is stable for at least one year from date of shipping when stored at -20°C.
RefSeq:	NM_001256790.3
RefSeq Size:	5875 bp
RefSeq ORF:	5739 bp
Locus ID:	778
UniProt ID:	O60840
Cytogenetics:	Xp11.23
Protein Families:	Druggable Genome, Ion Channels: Calcium, Transmembrane
Protein Pathways:	Alzheimer's disease, Arrhythmogenic right ventricular cardiomyopathy (ARVC), Calcium signaling pathway, Cardiac muscle contraction, Dilated cardiomyopathy, GnRH signaling pathway, Hypertrophic cardiomyopathy (HCM), MAPK signaling pathway, Vascular smooth muscle contraction
Gene Summary:	This gene encodes a multipass transmembrane protein that functions as an alpha-1 subunit of the voltage-dependent calcium channel, which mediates the influx of calcium ions into the cell. The encoded protein forms a complex of alpha-1, alpha-2/delta, beta, and gamma subunits in a 1:1:1:1 ratio. Mutations in this gene can cause X-linked eye disorders, including congenital stationary night blindness type 2A, cone-rod dystrophy, and Aland Island eye disease. Alternatively spliced transcript variants encoding multiple isoforms have been observed. [provided by RefSeq, Aug 2013]