

Product datasheet for **RG235337**

Girdin (CCDC88A) (NM_001254943) Human Tagged ORF Clone

Product data:

Product Type:	Expression Plasmids
Product Name:	Girdin (CCDC88A) (NM_001254943) Human Tagged ORF Clone
Tag:	TurboGFP
Symbol:	CCDC88A
Synonyms:	APE; GIRDIN; GIV; GRDN; HkRP1; KIAA1212; PEHO; PEHOL
Mammalian Cell Selection:	Neomycin
Vector:	pCMV6-AC-GFP (PS100010)
E. coli Selection:	Ampicillin (100 ug/mL)
ORF Nucleotide Sequence:	>RG235337 representing NM_001254943 Red=Cloning site Blue=ORF Green=Tags(s)

TTTTGTAATACGACTCACTATAGGGCGGCCGGAATTCGTCGACTGGATCCGGTACCGAGGAGATCTGCCGCC**CGATCGCC**

ATGGAGAACGAAATTTTACTCCCTTCTGGAGCAGTTCATGACCAGCCCTTTGGTCACTGGGTTAAAA
CGTTTGGACCTCTGGCCGAGGAAATGGGACCAACCTTGATGAATATGTGGCTTTGGTGGATGGGGTATT
CTTGAACCAGGTCATGCTCAAATTAATCCTAAATGGAGAGTCAGAGAGTAAATAAAAAAGTCAATAAT
GATGCCTCACTTAGAATGCACAATCTATCCATTTTGGTGAGACAGATAAAAATTTTATTACCAGGAGACTT
TGCAGCAATTGATCATGATGTCGTTGCCAAATGTCTTAATCATTGGCAAAAATCCCTTTTCTGAACAAGG
CACAGAAGAAGTTAAAAACTGCTTTTACTTTTATTGGGTTGTGCAGTTCAGTGTGCAAAAAAGAGGAA
TTTATTGAAAGAATCAAGGTTTAGATTTTATACAAAAGCAGCGGTTGCCGCACATATTCAAGAGGTAA
CTCATAATCAGGAAAATGTGTTTACCTGCAATGGATGGAAGTACTGATATGTCGCAGGAGGACATAGA
ACCACTTTGAAAAATATGGCATTGCATCTAAAAAGACTTATAGATGAGAGAGATGAACATTCAGAGACT
ATCATAGAATCTCTGAAGAGCGGGATGGTCTCCATTTTACCCCATGCCTCTTCATCTGCACAGTCAC
CCTGTGGTTCTCCAGGCATGAAGCGAACAGAAAGTCGACAACATCTGTGGTGAAGTGGCAGATGCTAA
AGCCAAGATAAGAAGGCTTAGGCAGGAATTGGAGGAAAAGACTGAGCAGTTGTTGGATTGTAACAAGAA
CTTGAGCAAATGGAAATAGAATCAAAAGGCTGCAACAAGAGAACATGAATTTGCTTTCCGATGCTCGCT
CTGCCAGAAATGTACCGAGATGAATTAGATGCATTCGAGAGAAAAGCAGTCAGAGTCGATAAAGCTTGAAAG
TGAAGTACGAGATATAAAGAGAGACTACATGATATTGAATTTTATAAGGCAAGGTTGAGGAATTTAAAA
GAAGACAATCAAGTTTTATTAGAAAACAAAACCATGTTGGAAGACCAACTAGAGGAACTCGTGCTCGTT
CTGATAAATTACATGAATTAGAAAAAGAGAATTAACAAGTAAAGCTAAACTTCATGATGGAATGGA
ACGAGATATGGATAGAAAAAGATTGAAGAATTAATGGAAGAAAATATGACTTTGGAAATGGCACAGAAA
CAAAGTATGGATGAATCATTACATCTGGCTGGGAACTGGAACAGATATCCAGAAGTGAAGTTCCTCCG
AAGCACCCAGAAATCCCTGGGCCATGAGGTGAATGAGTTGACATCAAGTAGATTATTGAAGCTAGAGAT
GGAAAATCAAAGTTTACAAAAACCGTAGAAGAGCTTCGGACTACTGTGATTCTGTAGAAGGCAATGCT



[View online »](#)

TCCAAAATCCTGAAAATGGAAAAAGAAAATCAAAGGCTCAGTAAAAAGGTTGAGATTCTTGAAAATGAGA
TTGTTCAAGAAAAGCAAAGTCTTCAGAATTGTCAGAATTAAGCAAGGATCTAATGAAGGAGAAAGCTCA
GCTTGAAAAACAATAGAAACACTGAGAGAAAAATTCAGAGAGACAGATTAAGATACTGGAACAGGAAAAAT
GAACATCTGAATCAAACAGTGTCTTCTTAAGGCAGCGGTCCCAGATAAGTGCAGAAGCAAGAGTGAAAG
ACATTGAAAAAGAAAAAAAATCTTCATGAATCTATCAAAGAAACAAGTAGCAAGCTAAGCAAGATTGA
ATTTGAAAAAGACAAATTA AAAAAGAATTGGAACATTATAAAGAAAAAGGAGAACGAGCTGAAGAACTT
GAAAAATGAATTGCATCATCTTGAAAAAGAAAATGAATTATTACAGAAAAAATAACTAATTTAAAAATTA
CTTGTA AAAAATGAGGCCTTAGAACCAAGAAAATTCAGAGCTAGAAAAGAAAAATAGAAAAATAAAAAA
AACATTGGATAGCTTTAAAAATCTGACCTTTCAGTTAGAATCCCTAGAAAAAGAGAATTC CCAACTTGAT
GAGGAAAACCTTAGAACTGCGAAGGAATGTAGAATCTTTGAAGTGTGCAAGCATGAAAATGGCTCAGCTAC
AGCTAGAAAACAAAGAACTGGAAAGTAAAAAGAGCAACTTAAGAAGGGTTTGGAGCTCTGAAAGCATC
TTTCAAGAAAACAGAACGCTTAGAAGTTAGCTACCAGGGTTTAGATATAGAAAATCAAAGACTGCAAAAA
ACTTTAGAGAACAGCAATAAAAAATCCAGCAATTAGAGAGTGAACACAAGACTTAGAGATGGAAAATC
AAACATTGCAGAAAAACCTAGAAGAACTAAAAATATCTAGCAAAAGACTAGAACAGCTGGAAAAAGAAAA
TAAATCATTAGAGCAAGAGACTTCTCAACTGAAAAGGATAAGAAACAATTGGAGAAGGAAAAATAGAGA
CTCCGACAACAAGCAGAAATTAAGATACCACATTAGAAGAAAAATATGTGAAGATTGGAATTTGGAAA
AAGAAAACAAAACCTATCCAAAGAAAATGGTATATATAAAGAATCTTGTGTCCGCTGAAAAGAACTAGA
AAAAGAAAATAAGGAGCTTGTGAAAAGAGCAACTATTGATATAAAAAAGTTGGTTACACTACGTGAGGAT
TTGGTGAGTGAAGGTTGAAGACCCAACAGATGAACAATGATCTCGAAAAATTAECTCATGAGCTTGAGA
AGATAGGGTTAAATAAGGAGCGACTCTTACATGATGAACAAGTACTGATGACAGGTATAAACTTTTGG
ATCAAAATTAGAATCCACTCTTAAGAAGTCTCTGAAATAAAGAAGAAAAAATTGCTGCTTTAGAAGCT
CGATTAGAAGAAATCCACGAATTAACACAGCAATTGCGCCAAGAACTTAAACAGTGAAAAAATATG
AAGCTCTCAAACAGAGACAAGATGAGGAAAGGATGGTACAGAGCTCTCCTCAATATCTGGTGAAGACA
CAATATGGGAGCGAGAAAAGTCAAGAAACGACTAGAGAATCTGAAAGTTAAAGACAGATTAATTGAAGTA
GAAAGAAATAATGCTACACTGCAAGCAGAGAAGCAAGCGTTGAAAACCTCAACTGAAGCAACTTGAGACAC
AGAACAATAATTTGCAGGCTCAGATTCTTGCACTTCAGAGGCAGACAGTGTATTACAAGAACAGAATAC
CACTCTTCAAACACAGAAATGCCAAGCTTCAAGTTGAAAATTCACCCCTAATTCCCAAAGTACCTCACTC
ATGAACCAGAAATGCCAAGCTCTAATCCAGCAGTCTTCTTAGAAAATGAAAATGAATCTGTAATCAAAG
AGCGAGAAGACCTAAAATCTCTCTATGATTCTCTGATCAAAGATCATGAAAAGCTGGAACCTCTCATGA
ACGTCAGGCTTCAAGATGAATCTTATCTCTAAACATGGAACCTGAAAGTCTGCCACAAAAATCTT
GAGGTGGAACATAGAGACCTTGAAGACCGTTACAATCAGTTATTAACACAGAAAGGACAGTTGGAAGATT
TGAAAAAATGCTCAAAGTAGAACAGGAAAAAATGCTGCTTGA AAAATAAAAATCATGAAACAGTAGCTGC
AGAATACAAGAACTTTGTGGTGA AAAATGATAGGCTGAATCATACCTATAGTCAACTTTTAAAAGAGACT
GAAGTTTTACAACTGACCATAAAAAATTTGAAAAGTCTTCTGAATAATTCCAAACTGGAACAAAACAGAT
TAGAAGCTGAATTTTCAAACCTAAAGGAACAATACCAACAATTGGATATTACATCAACCAAGCTGAATA
CCAGTGTGAGTTGCTAAGCCAATTAAGGAAAATTTAGAAGAAGAAAAATCGGCATCTACTAGATCAAAT
CAGACATTAATGCTACAGAACAGAACACTTTTGGAGCAGAATATGGAAAGCAAGGATCTTTTTCATGTTG
AACAAAGACAGTACATTGATAAGTTAAATGAATTAAGACGTGAGAAGGAGAAAAGTGAAGAGAAAAATTA
GGATCAATACAAATTTTATGACCCATCTCCTCTAGAAGGAGAGGCAACTGGATTACTCTAAAAATGAGA
AAATTGATAAAGTCTAAGAAAGATATTAATCGGGAACGCCAGAAAATCTCTAACATTAACACCCACCCGCT
CAGACTCCAGTGAAGGATTTCTCAGCTCCCTCATCAAGACAGTCAAGATAGTTCTTCAAGTGGTTCAAA
CTCTTTAGAAGATGGCCAGACCTTGGGACCAAGAAAAGCAGCATGGTTGCACTGAAAAGACTGCCCTTT
TTGAGGAACAGACCGAAGGATAAAGACAAAATGAAGGCCTGTACCGTCTTCCATGTCCATGAATGACC
TGGTGCAGTCCATGGTCTAGCAGGACAGTGGACAGGTAGTACTGAGAATTTGGAGGTTCTGATGATAT
TTCAACGGGTAAAAGGAGAAAAGAATGGGAGCTATGGCCTTCTCTACTACAGCCATCAACTTTTCAACT
GTCAACTCTTCTGAGGCTTCAAGTCAAGCAGTTGGTTAATAATAAAGATACTACATCTTTGAGACA
TAAGTCCACAAGGTGTTAGTGATGATTCTAGTACGGGATCAAGAGTTCATGCTTCAAGACCAGCCAGCT
TGATAGTGGCAGAACATCCACTAGCAATAGCAATAATAATGCTTCACTACATGAAGTCAAAGCAGGTGCA
GTTAATAACCAAAGCAGGCCACAAGCCACAGCAGTGGAGAATTTAGCCTGCTTCAAGCATTGAGGCTT
GGTCCAGCAGTGGTAGCAGTCCAATCCAGTACTTGAAGACAGACCAGATCAAGCCAGTGTCCAGCA
CAAAATATCTGAAACACTGGAGAGTGCACATCAACAAGTCAAAACTGGTTCCCTGGAAAGTGAAGTTGTT
ACTCTACAACAGTTTTTGGAAGAAAGCAATAAGCTTACCTCAGTACAGATAAAGTCTCAAGTCAAGAGA

ATCTTTTAGATGAAGTAATGAAAAGTTTGTCTGTCTTCTGACTTTTTGGGAAAAGACAAACCAGTTAG
 CTGTGGTCTGGCCAGCGTGATCTCAACTGCCGAAGGAAGTACACGAAGGACAAGCATCCATGATTTTTTG
 ACCAAGGACAGTAGACTGCCTATATCAGTTGATTCACCACCAGCTGCTGCTGACAGCAACACCACTGCAG
 CATCTAATGTGGACAAAGTACAAGAAAGCAGAAATTCAAAAAGCAGGTCTAGGGAGCAACAAAGCTCC

ACGCGTACGCGGCGCTCGAG – GFP Tag – GTTTAA

Protein Sequence:

>RG235337 representing NM_001254943
 Red=Cloning site Green=Tags(s)

MENEIFTPLLEQFMTSPLVTWVKTFGPLAAGNGTNLDEYVALVDGVFLNQVMLQINPKLESQRVNNKVVNN
 DASLRMHNLSILVRQIKFYQETLQQLIMMSLPNVLIIIGKNPFSEQGTTEEVKLLLLLLGCVAQCQKKEE
 FIERIQGLDFDTKAAVAHAHQEVTHNQENVFDLQWMEVTDMSQEDIEPLLNKMLHLKRLIDERDEHSET
 IIELSEERDGLHFLPHASSAQSPCGSPGMRKTESRQHLVELADAKAKIRRLRQLEEKTEQLLDCKQE
 LEQMEIELKRLQQENMNLSDARSARMYRDELDALEKAVRVDKLESEVSRYSRYKERLHDIIFYKARVEELK
 EDNQVLLLETKTMLEDQLEGTRARSDKLHELEKENLQLKAKLHDMEMERMDRKKIEELMEENMTLEMAQK
 QSMDESLHLGWELEQISRTSELSEAPQKSLGHEVNELTSSRLLKLEMENQSLTKTVEELRTTVDSVEGNA
 SKILKMEKENQRLSKKVEILENEIVQEQSLQNCQNLKDLMEKKAQLEKTIETLRENSERQIKILEQEN
 EHLNQTVSSLRQRSQISAEARVKDIEKENKILHESIKETSSKLSKIEFEKRIKKELEHYKEKGERAEEL
 ENELHLEKENELLQKKITNLKITCEKIEALEQENSELERENRKLKKTLDSEKNTLTFQLESLEKENSQLD
 EENLELRRNVESELKASMKMAQLQLENKELESEKEQLKGLLELLKASFKKTERLEVSQGLDIENQRLQK
 TLENSNKKIQQLESELQDLEMENQTLQKNLEELKISSKRLEQLEKENKSLEQETSQLEKDKKQLEKENKR
 LRQQAIEKDTTLEENNVKIGNLEKENKTLSEKIGIYKESVRLKELEKENKELVKRATIDIKTLVTLRED
 LVSEKLLKQMMNDLEKLTHELEKIGLNKERLLHDEQSTDDRYKLLLESKLESTLKKSLIEEKIAALEA
 RLEESTNYNQQLRQELKTVKKNYEALKRQDEERMVQSSPPISEGDNKWERESQETTRELKVKDRLEIEV
 ERNNATLQAEKQALKTQLKQLETQNNNLQAQILALQRQTVSLQEQTTLQTNAKLQVENSTLNSQSTSL
 MNQNAQLLIQSSLEENESVIKEREDLKSLYDSLKDHEKLELLHERQASEYESLSKHGTLKSAHKNL
 EVEHRDLEDRYNQLLKQKQLEDLEKMLKVEQEKMLLENKNHETVAAEYKCLCGENDRLNHTYSQLLKET
 EVLQTDHKNLKSLLNNSKLEQTRLEAEFSLKKEQYQQLDITSTKLNNQCELLSQLKGNLEENRHLLDQI
 QTLMLQNRLLLEQNMESKDLFHVEQRQYIDKLNELRRQKEKLEEKIMDQYKFYDPSPPRRRNWITLKM
 RKLKIKSKKIDINRERQKSLTLPTRSDSSEGFQLPHQDSQDSSVGSNSLEDGQTLGTTKSSMVALKRLPF
 LRNRPKDKDKMKACYRRSMMNDLVQSMVLAGQWTGSTEENLEVPDDISTGKRRKELGAMAFSTTAINFST
 VNSSAGFRSKQLVNNKDTTSFEDISPOQVSDSSTGSRVHASRPASLDSGRTSTSNNSNNASLHEVKAGA
 VNNQSRPQSHSSGEFSLLDHEAWSSSGSSPIQYLKRQTRSSPVLQHKISETLESRHHKIKTGSPGSEVV
 TLQQFLEESNKLTSVQIKSSSQENLLDEVMSLSVSSDFLGKDKPVSCGLASVISTAEGTTRRTSIIHDFL
 TKDSRLPISVDSPPAAADSNTTAAASNVDKQESRNSKRSRSREQQSS

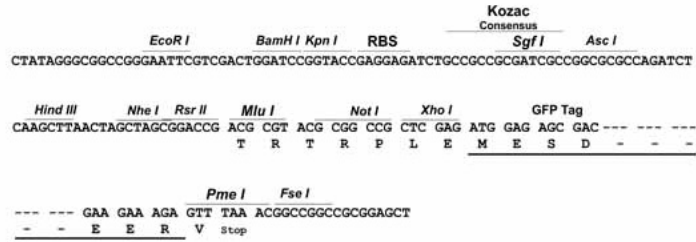
TRTRPLE – GFP Tag – V

Restriction Sites:

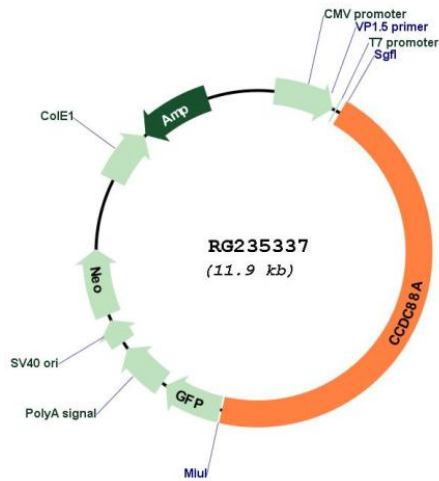
SgfI-MluI

Cloning Scheme:

Cloning sites used for ORF Shutting:



Plasmid Map:



ACCN:	NM_001254943
ORF Size:	5388 bp
OTI Disclaimer:	The molecular sequence of this clone aligns with the gene accession number as a point of reference only. However, individual transcript sequences of the same gene can differ through naturally occurring variations (e.g. polymorphisms), each with its own valid existence. This clone is substantially in agreement with the reference, but a complete review of all prevailing variants is recommended prior to use. More info
OTI Annotation:	This clone was engineered to express the complete ORF with an expression tag. Expression varies depending on the nature of the gene.
Components:	The ORF clone is ion-exchange column purified and shipped in a 2D barcoded Matrix tube containing 10ug of transfection-ready, dried plasmid DNA (reconstitute with 100 ul of water).
Reconstitution Method:	<ol style="list-style-type: none">1. Centrifuge at 5,000xg for 5min.2. Carefully open the tube and add 100ul of sterile water to dissolve the DNA.3. Close the tube and incubate for 10 minutes at room temperature.4. Briefly vortex the tube and then do a quick spin (less than 5000xg) to concentrate the liquid at the bottom.5. Store the suspended plasmid at -20°C. The DNA is stable for at least one year from date of shipping when stored at -20°C.
RefSeq:	NM_001254943.2
RefSeq Size:	9605 bp
RefSeq ORF:	5391 bp
Locus ID:	55704
UniProt ID:	Q3V6T2
Cytogenetics:	2p16.1
Gene Summary:	This gene encodes a member of the Girdin family of coiled-coil domain containing proteins. The encoded protein is an actin-binding protein that is activated by the serine/threonine kinase Akt and plays a role in cytoskeleton remodeling and cell migration. The encoded protein also enhances Akt signaling by mediating phosphoinositide 3-kinase (PI3K)-dependent activation of Akt by growth factor receptor tyrosine kinases and G protein-coupled receptors. Increased expression of this gene and phosphorylation of the encoded protein may play a role in cancer metastasis. Alternatively spliced transcript variants encoding multiple isoforms have been observed for this gene. [provided by RefSeq, Dec 2011]