

## Product datasheet for **RG235335**

### **KAT6B (NM\_001256469) Human Tagged ORF Clone**

#### Product data:

**Product Type:** Expression Plasmids  
**Product Name:** KAT6B (NM\_001256469) Human Tagged ORF Clone  
**Tag:** TurboGFP  
**Symbol:** KAT6B  
**Synonyms:** GTPTS; MORF; MOZ2; MYST4; qkf; querkopf; ZC2HC6B  
**Mammalian Cell Selection:** Neomycin  
**Vector:** pCMV6-AC-GFP (PS100010)  
**E. coli Selection:** Ampicillin (100 ug/mL)  
**ORF Nucleotide Sequence:** >RG235335 representing NM\_001256469  
**Red=Cloning site Blue=ORF Green=Tags(s)**

TTTTGTAATACGACTCACTATAGGGCGCCGGGAATTCGTCGACTGGATCCGGTACCGAGGAGATCTGCC  
GCC**CGATCGCC**

ATGGTAAAACCTTGCAAACCCACTTTATACAGAGTGGATTCTTGAAGCTATACAGAAAATAAAAAAGCAAA  
AGCAAAGGCCCTCTGAAGAGAGAATCTGCCATGCGGTCACTACTCCCATGGGTTGGATAAGAAGACAGT  
CTCTGAACAGCTGGAACCTCAGTGTTCAGGATGGCTCAGTTCTCAAAGTACCAACAAAGGCCCTTGCCTCC  
TATAAGGACCCAGACAACCTGGGGCTTTTCATCAGTTAAACCAGGCACCTTTTCCTAAGTCAGCCAAGG  
GGTCTAGAGGATCATGTAATGATCTCCGCAATGTGGATTGGAATAAACTTTTAAGGAGAGCAATTGAAGG  
ACTTGAGGAGCCGAATGGCTCCTCCCTGAAGAATAGAGAAGTATCTCAGAAGTCAAAGTGATCTCACA  
AGCACCACCAACAACCCAGCCTTTCAGCAGCGGCTGCGACTGGGGCCAAACCGCGCTGTGAATAATGGGA  
GGTTACTGAAAGACGGACCGCAGTACAGGGTCAATTATGGGAGCTTAGATGGCAAAGGGGCACCTCAGTA  
TCCCAGTGCATTCCTCCTCGCTCCCACCTGTGAGCCTTCTACCCCATGAGAAAGACCAGCCCCGTGCT  
GATCCCATTCCAATATGTAGCTTCTGTTGGGACTAAAGAATCAAATCGTGAAAAGAAACCAGAAGAAC  
TCCTCTCTGTGCAGATTGTGGCAGTAGTGACACCCATCCTGTTGAAATTTTGTCTGAATTAACAAC  
AAATGTAAGGCCCTTAAGGTGGCAGTGCATCGAATGCAAGACATGCAGTGCCTGTAGAGTCCAAGGCAGA  
AATGTGATAATGCTTTTTTTGTGATTCTGTGATAGAGGATTCATATGGAATGCTGTGACCCACCC  
TTTCCAGAAATGCCAAAAGGGATGTGGATTTGCCAAGTCTGCAGACCAAAGAAAAGGGAAGAAAACACT  
TCATGAGAAAAGCTGCACAAAATAAACGACGATATGCAAAAACCCATTGGACGACCGAAAATAAAATTAAG  
CAACGATTGTTGTCTGTAACAGTATGAAGGATCCATGAATGCATTCACAGGAAGGGGGTACCTGATA  
CTGAAATAAAAATAAACATCAAACAAGAAAGTGCAGATGTAATGTGATTGGAAACAAGGATGTCGTTAC  
TGAAGAGGATTTGGATGTTTTTAAGCAGGCCAGGAACCTTTCTGGGAGAAAATAGAGTGTGAGAGTGGG  
GTGGAAGACTGTGGCCGGTACCCTTCTGTGATTGAATTTGGTAAATATGAAATCCAAACCTGGTACTCCT  
CGCCTTACCACAGGAATATGCAAGATTACCAAAGCTTTACCTGTGTGAATCTGTCTTAAATATATGAA  
AAGTAAAATATTTTGTAAAGACTCCAAGAAGTGTGGATGTTTCATCTCCAGCAAATGAAATTTAC



[View online »](#)

CGAAGGAAAGACCTTTCAGTATTTGAGGTTGATGGGAATATGAGCAAAATTTATTGCCAAAACCTTTGCT  
TGTTAGCCAAGCTCTTCTGACCAAAAACGTTGATTATGATGTCGAGCCATTCTTTTTTATGTCT  
TACAAAAATGATGAAAAGGGCTGTCACTGGTTGGATACTTCTCTAAGGAAAAGCTTTGCCAGCAGAAG  
TATAATGTCTCCTGCATAATGATCATGCCCCAGCACAAAGGCAAGGATTTGGACGGTTTCTCATTGATT  
TCAGCTATTTGCTTTCTAGAAGAGAAGGCCAAGCAGGGTCTCTGAAAAGCCTCTCTCCGATCTGGGCCG  
TCTCTCTACCTGGCATATTGGAAGAGCGTCATCTTGGAGTATCTCTACCACCACCATGAGAGGCACATC  
AGCATCAAGGCAATTAGCAGAGCGAGGGCATGTGCCACATGACATTGCCACCACCTCTGCAGCACCTCC  
ACATGATCGACAAGAGAGATGGCAGATTTGTCTCATTAGACGGGAAAAGTTGATATTGAGCCACATGGA  
AAAGCTGAAAACCTGTTCCAGAGCCAATGAACTTGATCCAGACAGTCTGAGGTGGACCCCAATTTTAATT  
TCTAATGTCTCAGTGTCTGAAGAAGAGCGAGAAGCTGAGAAAAGAGGCTGAGCGGTAATGGAACAAGCTA  
GCTGCTGGGAGAAGGAGGAACAAGAAATCCTGTCAACTAGAGCTAACAGTAGGCAATCACCTGCAAAAGT  
ACAATCGAAAAATAAATATTTGCATTCCCCGAGAGCCGGCCAGTACAGGGGAGCGAGGGCAGCTGCTG  
GAGCTGTCTAAAGAGAGCAGTGAAGAAGAAGAGGAGGAGGACGAGGAGGAGGAAGAAGAGGAGGAAG  
AAGAGGAAGAGGATGAAGAGGAGGAAGAAGAGGAAGAAGAAGAAGAAGAAAATATTTCAAAGCTC  
TCCCCAAGATTGACGAAACCACAGTCACTTGGCCATAAAGAGAAAAGGGCCTTTTGTACTAAAGAAGAAA  
AGGGGTGCTAAACGCAGGAGGATCAACAGCAGTGTAAACAAGAGACCATTTTCAGAGACGACAGAAGTAC  
TGAATGAGCCCTTTGACAACTCAGATGAAGAGAGGCAATGCCACAGCTGGAGCCTACCTGTGAGATTGA  
AGTGGAGGAAGATGGCAGGAAGCCAGTCTGAGAAAAGCATTCCAGCATCAGCCTGGGAAGAAAAGACAA  
ACAGAGGAAGAGGAAGGAAAAGACAATCATTGCTTCAAGAATGCTGACCCCTGTAGAAAACAATGAAATG  
ATGATTCAAAGTAACTTGAAGAAGGCAGTAAAGACAATCCCGAACCTCTAAAGTGCAAACAAGTGTGGCC  
AAAAGGAACAAAGCGCGGTCTATCTAAGTGGAGGCAAAACAAGAGAGGAAGACCGGATTTAACTGAAT  
TTGTACACCCCGCAGAAAACCCATGGAGCCTGACGAGCAGGTAAACAGTGAAGAACAAGAGGAGACTT  
CAGAAGGAAAAACAGCCCACTCCCATCAGGATTGAGGAGGAGTCAAGGAACTGGGGAAGCCCTGTT  
GCCTCAAGAGGAAAAACAGAAGGGAAGAACAATGTGCCCTGTAAGTCCAACACATCACCAGGTGAAAAA  
CCAGAAGATGATCTCATCAAACCTGAGGAAGAGGAAGAGGAGGAGGAGGAAGAGGAAGAAGAGGAAG  
AAGAGGAAGGGGAAGAAGAAGAGGAGGAGGAAATGTAGAAAAGATCCAGATGGTGCTAAAAGCCAAGA  
AAAAGAGGAACAGAAAATCTCCACGAAAAAGAAGACTCTGCACGTTTGGATGATCAGAAAGAGGAGGAG  
GAAGAGGATGAAGAGCCATCCCACAACGAGGACCATGATGCCGATGACGAGGATGACAGCCACATGGAGT  
CTGCCAAGTGGAGAAGGAGAGCTGCCAGAGAAAGCTTCAAAGAAGTACTGGAAAACAGGAGACTTT  
TTTAGACCTTAATGTGCAGCCTGGTCACTCGAACCCAGAGGTCTTAATGGACTGTGGCGTCGACCTGACA  
GCTTCTTGTAACAGTGAAGCCCAAGGAGCTTGTGGGGACCCTGAAGCTGTACCCGAATCTGACGAGGAGC  
CACCCCAAGGAGAACAGGCACAGAAGCAGGACCAAAAGAACAGCAAGGAAGTTCGATACAGAGTTCAAAGA  
GGGAAACCCAGCAACCATGGAAATCGACTCTGAGACTGTCCAGGCCGTTCACTTTTGACCCAGGAGAGC  
AGCGAACAGGACGACACCTTTCAGGATTGTGCCGAGACTCAAGAGGCCTGTAGAAGCCTACAGAACTACA  
CCCGTGCAGACCAAAGTCCACAGATTGCCACCACGCTCGACGATTGCCAACAGTCGGACCACAGTAGCCC  
AGTTTCATCCGTCACCTCCATCCTGGCCAGTCCGTACGTTCTGTCAACAGCCCAAGTGTCCCTGCTCTG  
GAAAACAGCTACGCCAAATCAGCCAGATCAAAGTGCCATCTCAGTGCCATCTCTGCAGAACATGGAAA  
CCAGTCCCATGATGGATGTCATCAGTTCAGATCATTACAGCAAGTCGTAGACAGTGGATTTAGTGA  
CCTGGGCAGTATCGAGAGCACAACTGAGAACTACGAAAACCAAGCAGCTACGATTTACTATGGGAGGC  
AGCATCTGTGGAACGGCTCTTACAGAACAGCTGCTCCTATAGCAACCTCACCTCCAGCAGTCTGACAC  
AGAGCAGCTGTGCTGTACCCAGCAGATGTCCAACATCAGCGGGAGCTGCAGCATGCTGCAGCAACCAG  
CATCAGCTCCCCTCCGACCTGCAGCGTCAAGTCTCCTCAAGGCTGTGTGGTGGAGAGGCCTCCGAGCAGC  
AGCCAGCAGCTGGCTCAGTGCAGCATGGCTGCTAACTTCACCCCACCATGCAGCTGGCTGAAATCCCCG  
AGACGAGCAACGCCAACATTGGCTTATACGAGCGAATGGGTGAGAGTATTTGGGGCTGGGCATTACCC  
GCAGCCGTGAGCCACCTTCAAGCTTGCACAACTGCAGCAGTAACTAATACTATTGATCATTTCATTG  
CCTTACAGCCATTCGGCTGCTGTGACTTCTATGCAAACAGTGCCTCTTTGTCCACACCATTAAGTAACA  
CAGGGCTTGTTCAACTTTCTCAGTCTCCACACTCCGTCCTGGGGGACCCCAAGCACAAGCTACCATGAC  
CCACCCCAACCTGACTCCTCCTCAATGAATCTGCCGCCCTCTTTTGCAACGGAACATGGCTGCA  
TCAAATATTGGCATCTCTCACAGCCAAAGACTGCAAACCCAGATTGCCAGCAAGGGCCACATCTCCATGA  
GAACCAAGTCAGCGTCTCTGTACCAGCCGCTGCCACCCATCAGTCAAAATCTATGGGCGCTCCAGAGC  
TGATAGCCATGCAGGGTCTGCACGGACTTAAACGATGCAAAGAGGCATGAACATGAGTGTGAACCTGATG  
CCAGCGCCAGCCTACAATGTCAACTCTGTGAACATGAACATGAACACTCTCAACGCCATGAATGGGTACA

GCATGTCCAGCCAATGATGAACAGTGGCTACCACAGCAATCATGGCTATATGAATCAAACGCCCAATA  
 CCCTATGCAGATGCAGATGGGCATGATGGGCACCCAGCCATATGCCAGCAGCCAATGCAGACCCACCC  
 CACGGTAACATGATGTACACGGCCCGGACATCACGGCTACATGAACACAGGCATGTCCAAACAGTCTC  
 TCAATGGCTCCTACATGAGAAGG

ACGCGTACGCGGGCCGCTCGAG - GFP Tag - GTTTAA

**Protein Sequence:**

>RG235335 representing NM\_001256469  
 Red=Cloning site Green=Tags(s)

MVKLANPLYTEWILEAIQKIKKQKQRPSEERICHAVSTSHGLDKKTVSEQLSVQDGSVLKVTNKGLAS  
 YKDPDNPGRFSSVKPGTFPKSAKSGRGCNDLNRVDWNKLLRRAIEGLEEPNGSSLKNIEKYLRSDLT  
 STTNPAFQQLRLGAKRAVNNRLLKDGPOYRVNYGSLDGKQAPQYPSAFPSSLPVSLPHEKQPRAD  
 PIPICFCLGTKE SNREKKPEELLSCADCGSSGHP SCLKFCPELTTNVKALRWQCTECKTCSACRVQGR  
 NADNMLFCDSCDRGFHMECCDPPLSRMPKGMWICQVCRPKKKGRKLLHEKAAQIKRRYAKPIGRPKNKLK  
 QRLLSVTSDEGSMAFTGRGSPDTEIKINIKQESADVNVIGNKDVVTEEDLDVFKQAQELSWEKIECESG  
 VEDCGRYSVIEFGKYEIQTWYSSPYPQEYARLPKLYLCEFLKYMKSKNILLRHSKCKGWFHPPANEIY  
 RRDLSVFEVDGNMSKIYCQNLCLLAKLFLDHKTLYYDVEPFLFYVLTKNDEKGCHELVGYFSKEKLCQK  
 YNVSCIMIMPQHQRQGFGRFLIDFSYLLSRREGQAGSPEKPLSDLGRLSYLAYWKSIVILEYLHHHERHI  
 SIKAISRATGMCPHDIATTLQHLHMIDKRDGRFVIIRREKLILSHMEKLTCSRANELDPDSLRTWPILI  
 SNAAVSEEREAEKEAERLMEQASCWEKEEQEILSTRANSRQSPAKVQSKNKYLHSPESRPVTGERGQLL  
 EL SKESSEEEEEEEEEEEEEEEEEEEEEEEEEEEEEEEEEENIQSSPRLTKPQSVAIKRKRPFVLKKK  
 RGRKRRRINSSVTTETISETTEVLNEPFDNSDEERPMPQLEPTCEIEVEEDGRKPVLRKAFQHQPCKKQ  
 TEEEGKDNHCFKNADPCRNMNDSSNLKEGSKDNPEPLKCKQVWPKGTRGLSKWRQNKERKTGFKLN  
 LYTPPETMPPEQVTVEEQKETSEGKTSPIRIEEVETGEALLPQEEENREETCAPVSPNTSPGK  
 PEDDLIKPEEEEEEEEEEEEEEEEEEEEEEGGNGVEKDPDGAQSQEKEEPEISTEKEDSARLDDHEEE  
 EDEEPSHNEDHDADDEDDSHMESAEVEKEELPRESFKEVLENQETFLDLNVQPGHSNPEVLMDCGVDL  
 ASCNSEPKELAGDPEAVPESDEEPPGGEAQKQDQKNSKEVDTEFKEGNPATMEIDSETVQAVQSLTQES  
 SEQDDTFQDCAETQEACRSLQNYTRADQSPQIATTLDDCQQSDHSSPVSSVHSHPGQSVRSVNSPVPAL  
 ENSYAQISPDQSAISVPSLQNMETSPMMDVPSVSDHSQQVVDSGFSDLGSIESTTENYENPSSYDSTMGG  
 SICGNGSSQNSCSYSLTSSSLTQSSCAVTQQMSNISGSCSMLQQTSSISSPPTCSVKSPQGCVERPPSS  
 SQQLAQCSMAANFTPPMQLAEIPETSNANIGLYERMGSDFGAGHYPPQSATFSLAKLQQLTNTLIDHSL  
 PYSHSAAVTSYANSASLSTPLSNTGLVQLSQSPHVPGGPQAQATMTPPPNTLTPPPMNLPPPLLQRNMAA  
 SNIGISHSQRLQTQIASKGHISMRTKSASLSPAAATHQSQIYGRSQTVMQGPARTLTMQRGMNMSVNL  
 PAPA YNVNSVNMNMTL NAMNGYSMSQPMNNGYHSNHGYMNTQTPQYPMQMGMGMGTQPYAQQPMQTPP  
 HGNMNYTAPGHHGYMNTGMSKQSLNGSYMRR

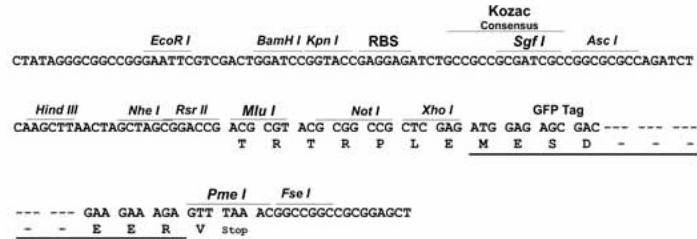
TRTRPLE - GFP Tag - V

**Restriction Sites:**

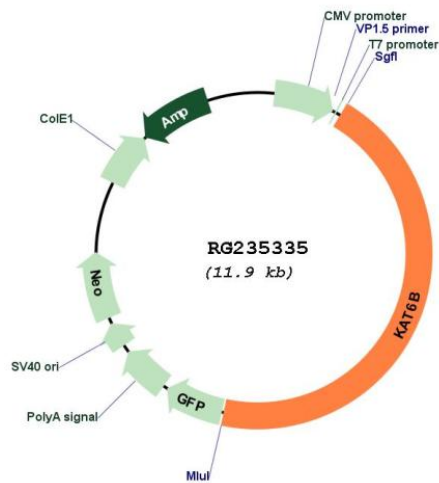
Sgfl-MluI

Cloning Scheme:

Cloning sites used for ORF Shutting:



Plasmid Map:



<b>ACCN:</b>	NM_001256469
<b>ORF Size:</b>	5343 bp
<b>OTI Disclaimer:</b>	The molecular sequence of this clone aligns with the gene accession number as a point of reference only. However, individual transcript sequences of the same gene can differ through naturally occurring variations (e.g. polymorphisms), each with its own valid existence. This clone is substantially in agreement with the reference, but a complete review of all prevailing variants is recommended prior to use. <a href="#">More info</a>
<b>OTI Annotation:</b>	This clone was engineered to express the complete ORF with an expression tag. Expression varies depending on the nature of the gene.
<b>Components:</b>	The ORF clone is ion-exchange column purified and shipped in a 2D barcoded Matrix tube containing 10ug of transfection-ready, dried plasmid DNA (reconstitute with 100 ul of water).
<b>Reconstitution Method:</b>	<ol style="list-style-type: none"><li>1. Centrifuge at 5,000xg for 5min.</li><li>2. Carefully open the tube and add 100ul of sterile water to dissolve the DNA.</li><li>3. Close the tube and incubate for 10 minutes at room temperature.</li><li>4. Briefly vortex the tube and then do a quick spin (less than 5000xg) to concentrate the liquid at the bottom.</li><li>5. Store the suspended plasmid at -20°C. The DNA is stable for at least one year from date of shipping when stored at -20°C.</li></ol>
<b>RefSeq:</b>	<a href="#">NM_001256469.1</a> , <a href="#">NP_001243398.1</a>
<b>RefSeq Size:</b>	7633 bp
<b>RefSeq ORF:</b>	5346 bp
<b>Locus ID:</b>	23522
<b>UniProt ID:</b>	<a href="#">Q8WYB5</a>
<b>Cytogenetics:</b>	10q22.2
<b>Protein Families:</b>	Druggable Genome
<b>Gene Summary:</b>	The protein encoded by this gene is a histone acetyltransferase and component of the MOZ/MORF protein complex. In addition to its acetyltransferase activity, the encoded protein has transcriptional activation activity in its N-terminal end and transcriptional repression activity in its C-terminal end. This protein is necessary for RUNX2-dependent transcriptional activation and could be involved in brain development. Mutations have been found in patients with genitopatellar syndrome. A translocation of this gene and the CREBBP gene results in acute myeloid leukemias. Three transcript variants encoding different isoforms have been found for this gene. [provided by RefSeq, Mar 2012]