

Product datasheet for **RG235334**

Complement C4B (C4B_2) (NM_001242823) Human Tagged ORF Clone

Product data:

Product Type: Expression Plasmids
Product Name: Complement C4B (C4B_2) (NM_001242823) Human Tagged ORF Clone
Tag: TurboGFP
Symbol: C4B_2
Mammalian Cell Selection: Neomycin
Vector: pCMV6-AC-GFP (PS100010)
E. coli Selection: Ampicillin (100 ug/mL)
ORF Nucleotide Sequence: >RG235334 representing NM_001242823
Red=Cloning site Blue=ORF Green=Tags(s)

TTTTGTAATACGACTCACTATAGGGCGGCCGGGAATTCGTCGACTGGATCCGGTACCGAGGAGATCTGCC
GCCCGATCGCC

ATGAGGCTGCTCTGGGGCTGATCTGGGCATCCAGCTTCTCACCTTATCTCTGCAGAAGCCCAGGTTGC
TCTTGTCTCTCCTTCTGTGGTTCATCTGGGGTCCCCATCGGTGGGGTGCAGCTCCAGGATGTGCC
CCGAGGACAGGTAGTAAAGGATCAGTGTCTCTGAGAAACCCATCTCGTAATAATGTCCCCTGCTCCCCA
AAGTGGACTTCACCCTTAGCTCAGAAAGAGACTTCGACTCCTCAGTCTCCAGGTGCCCTGAAAGATG
CGAAGAGCTGTGGCTCCATCAACTCCTCAGAGGCCCTGAGGTCAGCTGGTGGCCATTGCCATGGCT
AAAGGACTCTCTGTCCAGAACGACAAACATCCAGGGTATCAACCTGCTTCTCTCCTCTCGCCGGGGCAC
CTCTTTTTGCAGACGGACCAGCCATTTACAACCTGGCCAGCGGTTCCGTACCGGTTCTTTGCTCTGG
ATCAGAAGATGCGCCGAGCACTGACACCATCACAGTCATGGTGGAGAACTCTCACGGCCTCCGCGTGCG
GAAGAAGGAGGTACATGCCCTCGTCCATCTCCAGGATGACTTTGTGATCCCAGACATCTCAGAGCCA
GGGACCTGGAAGATCTCAGCCGATTCTCAGATGGCCTGGAATCCAACAGCAGCACCCAGTTTGAGGTGA
AGAAATATGTCCTTCCAACTTTGAGGTGAAGATCACCCCTGAAAGCCCTACATCTGACGGTGCCAGG
CCATCTTGATGAAATGCAGTTAGACATCCAGGCCAGGTACATCTATGGGAAGCCAGTGCAGGGGTGGCA
TATGTGCGCTTTGGGCTCTAGATGAGGATGGTAAGAAGACTTTCTTTCCGGGGCTGGAGAGTCAGACCA
AGCTGGTGAATGGACAGAGCCACATTTCCCTCTCAAAGGCAGAGTTCAGGACGCCCTGGAGAAGCTGAA
TATGGGCACTTACTGACCTCCAGGGGCTGCGCCTTACGTTGCTGCAGCCATCATTGAGTATCCAGGTGGG
GAGATGGAGGAGGAGGAGCTCACATCCTGGTATTTTGTGTCTCATCTCCCTTCTCCTTGGATCTTAGCAAGA
CCAAGCGACACCTTGTGCTGGGGCCCCCTTCTGCTGCAGGCCTTGGTCCGTGAGATGTGAGGCTCCCC
AGCTTCTGGCATTCTGTCAAAGTTTCTGCCACGGTGTCTTCTCCTGGTCTGTTCTGAAGTCCAGGAC
ATTCAGCAAAACAGACGGGAGCGGCAAGTCAGCATTCCAATAAATATCCCTCAGACCATCTCAGAGC
TGCAGCTCTCAGTATCTCAGGCTCCCCACATCCAGCGATAGCCAGGCTCACTGTGGCAGCCCCACCTTC
AGGAGCCCCGGTTTTCTGTCTATTGAGCGGCCGATTCTCGACCTCCTCGTGTGGGGACACTGAAC
CTGAACCTTGCAGCCGTGGGCAGTGGGGCACCTTTTCTACTACTACTACATGATCCTATCCCGAGGGC
AGATCGTGTTCATGAATCGAGAGCCCAAGAGGACCCTGACCTCGGTCTCGGTGTTGTGGACCATCACCT



[View online >](#)

GGCACCTCCTTCTACTTTGTGGCCTTCTACTACCATGGAGACCACCCAGTGGCCAACCTCCTGCGAGTG
 GATGTCCAGGCTGGGCTGCGAGGGCAAGCTGGAGCTCAGCGTGGACGGTGCCAAGCAGTACCGGAACG
 GGGAGTCCGTGAAGCTCCACTTAGAAACCGACTCCCTAGCCCTGGTGGCCTGGGAGCCTTGACACAGC
 TCTGTATGCTGCAGGCAGCAAGTCCCACAAGCCCTCAACATGGGCAAGGTCTTTGAAGCTATGAACAGC
 TATGACCTCGGCTGTGGTCTGGGGTGGGACAGTGCCTTCAGGTGTTCCAGGCAGCGGGCTGGCCT
 TTTCTGATGGAGACCAGTGGACCTTATCCAGAAAGAGACTAAGCTGTCCAAGGAGAAGACAACCCGGAA
 AAAGAGAAACGTGAACCTCCAAAAGGCGATTAATGAGAAATGGGTGAGTATGCTTCCCGACAGCCAAG
 CGCTGCTGCCAGGATGGGGTGCACAGTCTGCCCATGATGCGTTCCCTGCGAGCAGCGGGCAGCCCGCTGC
 AGCAGCCGGACTGCCGGAGCCCTTCTGTCTGCTGCCAATTTGCTGAGAGTCTGCGCAAGAAGAGCAG
 GGACAAGGGCCAGGCGGGCTCCAACGAGCCCTGGAGATCCTGCAGGAGGAGGACCTGATTGATGAGGAT
 GACATTCCTGTCGACGCTTCTCCAGAGAACTGGCTCTGGAGAGTGGAAACAGTGGACCGCTTCAA
 TATTGACACTGTGGCTCCCGACTCTGTACCAGTGGGAGATCCATGGCCTGAGCCTGTCCAAAACCAA
 AGGCCTATGTGTGGCCACCCAGTCCAGCTCCGGGTGTTCCGCGAGTTCACCTGCACCTCCGCTGCC
 ATGTCTGTCCGCCCTTGAGCAGCTGGAGCTGCGGCCTGTCTATAACTACCTGGATAAAAACCTGA
 CTGTGAGCGTCCACGTGTCCCAGTGGAGGGCTGTGCCTGGCTGGGGGGGAGGGCTGGCCAGCAGGT
 GCTGGTGCCTGCGGGCTGTGCCGGCCTGTTCCTTCTGTGGTGGCCACGGCAGCCCGCTGTGTCT
 CTGAAGGTGGTGGCTCGAGGGTCTTCAATTCCCTGTGGGAGATGCGGTGTCCAAGTTCTGCAGATTG
 AGAAGGAAGGGCCATCCATAGAGAGGAGCTGGTCTATGAACTCAACCCCTTGGACCACCGAGGCCGGAC
 CTTGGAATACCTGGCAACTCTGATCCCAATATGATCCCTGATGGGGACTTTAACAGTACGTACGGGT
 ACAGCCTCAGATCCATTGGACACTTAGGCTCTGAGGGGGCTTGTACCAGGAGGCGTGGCCTCCCTCT
 TGAGGCTTCTCGAGGCTGTGGGAGCAAACCATGATCTACTTGGCTCCGACACTGGTGTCTCCCGTA
 CCTGGACAAGACAGAGCAGTGGAGCACACTGCCCTCCGAGACCAAGGACCACCGGTGGATCTGATCCAG
 AAAGCTACATGCGGATCCAGCAGTTCGGAAGGCGGATGGTTCCTATGCGGCTTGGTGTCCAGGGGCA
 GCAGCACCTGGCTCACAGCCTTTGTGTTGAAGTCTGAGTTTGGCCAGGAGCAGGTAGGAGGCTGCC
 TGAGAACTGCAGGAGACATCTAACTGGCTTCTGTCCCAGCAGCAGGCTGACGGCTCGTTCCAGGACCTC
 TCTCCAGTGATACATAGGAGCATGCAGGGGGTGGTGGGCAATGATGAGACTGTGGCACTCACAGCCT
 TTGTGACCATCGCCCTTCCATCATGGGCTGGCCGCTTCCAGGATGAGGGTGCAGAGCCATTGAAGCAGAG
 AGTGAAGCCTCCATCTCAAAGGCAAGCTCATTTTTGGGGGAGAAAGCAAGTGTGGGCTCCTGGGTGCC
 CACGCAGTGCATCACGGCCTATGCCCTGACACTGACCAAGGCCCTGCGGACCTGCGGGGTGTTGCC
 ACAACAACCTCATGGCAATGGCCAGGAGACTGGAGATAACCTGTACTGGGGCTCAGTACTGGTCTCA
 GAGCAATGCCGTGTGCCACCCAGCTCCTCGCAACCCATCCGACCCATGCCACAGGCCCCAGCCTG
 TGGATTGAAACCACAGCCTACGCCCTGTGCACCTCCTGTTCAGGAGGGCAAAGCAGAGATGGCAGACC
 AGGCTGCGGCCTGGCTCACCCGTGAGGGCAGCTTCCAAGGGGATTCCGAGTACCCAAGACACGGTGAT
 TGCCCTGGATGCCTGTCTGCTACTGGATTGCCTCCCACACCACTGAGGAGAGGGGTCTCAATGTGACT
 CTCAGTCCACAGGCCGAATGGGTTCAAGTCCCACGCGTGCAGCTGAACAACCGCCAGATTCCGGCC
 TGGAGGAGGAGCTGCAGTTTTCTTGGGAGCAAGATCAATGTGAAGGTGGGAGGAAACAGCAAAGGAAC
 CCTGAAGTCTTCGTACCTACAATGTCTGGACATGAAGAACACGACCTGCCAGGACCTACAGATAGAA
 GTGACAGTCAAAGGCCAGTTCGAGTACAGATGGAAGCAAACGAGGACTATGAGGACTATGAGTACGATG
 AGCTTCCAGCCAAGGATGACCCAGATGCCCTCTGCAGCCGTGACACCCCTGCAGCTGTTTGGGGTTCG
 GAGGAACCGCCGAGGAGGGAGGCCCAAGTGGTGGAGGAGCAGGAGTCCAGGTTGACTACACCGTG
 TGCATCTGGCGGAACGGCAAGGTGGGGTGTCTGGCATGGCCATCGCGGACGTCACCTCCTGAGTGGAT
 TCCACGCCCTGCGTGTGACCTGGAGAAGCTGACCTCCCTCTCTGACCGTTACGTGAGTCACTTTGAGAC
 CGAGGGGGCCACGCTCTGCTGATTTTACTCGGTCCACCTCCCGGAGTGCCTGGGCTTTGAGGCT
 GTGCAGGAAGTCCGGTGGGGTGGTGCAGCCGGCCAGCGCAACCTGTACGACTACTACAACCCGAGC
 GCAGATGTTCTGTGTTTACGGGGCACCAAGTAAGAGCAGACTCTGGCCACCTTGTGTTCTGCTGAAGT
 CTGCCAGTGTGCTGAGGGGAAGTGCCTCGCCAGCGTCCGCGCTGGAGCGGGTCTGCAGGACGAGGAT
 GGCTACAGGATGAAGTTGCCTGCTACTACCCCGTGTGGAGTACGGCTCCAGGTTAAGGTTCTCCGAG
 AAGACAGCAGAGCTGCTTCCGCCCTTTGAGACCAAGATCACCAAGTCTGCACTTACCAAGGATGT
 CAAGGCCGCTGCTAATCAGATGCGCAACTTCTGGTTCGAGCCTCCTGCCGCTTCCGCTTGAACCTGGG
 AAAGAATATTTGATCATGGGCTAGATGGGGCCACCTATGACCTCGAGGGACACCCCAAGTACCTGCTGG
 ACTCGAATAGCTGGATCGAGGAGATGCCCTCTGAACGCTGTGCCGGAGCACCCGCCAGCGGGCAGCCTG
 TGCCAGCTCAACGACTTCTCCAGGAGTATGGCACTCAGGGGTGCCAGGTG

ACGCGTACGCGGCCGCTCGAG - GFP Tag - GTTTAA

Protein Sequence:

>RG235334 representing NM_001242823
 Red=Cloning site Green=Tags(s)

MRLWGLIWASSFFTL SLQKPRLLL FSPSVVHLGVPLSVGVQLQDVPRGQVVKGSVFLRNPSRNNVPCSP
 KVDFTLSSERDFALL SLQVPLKDAKSCGLHQLLRGPEVQLVAHSPWLKDSL SRTTNIQGINLLFSSRRGH
 LFLQTDQPIYNPQQRVRYRVFALDQKMRPSTDTITVMVENSHGLRVRKKEVYMPSSIFQDDFVIPDI SEP
 GTWKISARFSDGLESNSSTQFEVKYVLPNFEVKITPGKPYILTVPGHLDQMQLDIQARYIYGKPVQGVVA
 YVRFGLLDEDGKKTFFRGLSESQTKLVNGQSHISLSKAEFQDALEKLNMGITDLQGLRLYAAAAIEYPPG
 EMEEAELTSWYFVSSPFLDL SKTKRHLVPGAPFLQALVREMSGSPASGIPVKVSATVSSPGSVPEVQD
 IQQNTDGSQGVSIPIIIPQTI SELQLSVSAGSPHPAIARLTVAAPSSGGPGFLSIERPDSRPPRVGDTLN
 LNLRAVGSAGTF SHYYYMILSRGQIVFMNREP KRTLTSVSVFVDHHLAPSFYFVAFYHGDHPVANSLRV
 DVQAGACEGKLELSVDGAKQYRNGESVKLHLETDSLALVALGALDTALYAAGSKSHKPLNMKGKVF EAMNS
 YDLGCGPGGGDSALQVFQAAGLAFSDGDQWTL SRKRLSCPKEKTRRKRNVNFQKAINELGQYASPTAK
 RCCQDGVTRLPMRSCQRAARVQPPDCREPF LSCCQFAESLRKSRDKGQAGLQRALEILQEEDLIDED
 DIPVRSFFPENWLWRVETVDRFQIL TLWLPDSL TTWEIHGLSLSKTKGLCVATPVQLRVFREFHLHLRLP
 MSVRRFEQLELRPVLYNYLDKNLTVSVHVSPVEGLCLAGGGGLAQVLPAGSARPVAFSVVPTAAA AVS
 LKVVARGSFEPVGD AVSKVLQIEKEGA IHREELVYELNPLDHRGRTLEIPGNSDPNMIPDGFNSYVRV
 TADPLDTLGSEGALSPGGVASLLR LPRGCGEQTMIYLAPTLAASRYLDKTEQWSTLPPETKDHAVDLIQ
 KGYMRIQQFRKADGSYAAWL SRGSSTWL TAFVLKVL SLAQEQVGGSP EKLQETSNWLLSQQADGSFQDL
 SPVIHRSMQGGLVGNDETVALTAFVTIALHHGLAVFQDEGA EPLKQRVEASI SKASSFLGEKASAGLLGA
 HAAAITAYALTLTKAPADLRGVAHNNLMAMAQETGDNLYWGSVTGSQSNVSPTPAPRNP SDPMPQAPAL
 WIETTAYALLHLLLHEGKAEMADQAAAWL TRQGSFQGGFRSTQD TVIALDAL SAYWIASHTTEERGLNVT
 LSSTGRNGFKSHALQLNNRQIRGLEEELQFSLGSKINVKVGNSKGT LKVLRTYNVLDMKN TTCQDLQIE
 VTKVGHVEYTM EANEDYEDYDEL PAKDDPDAPLQPVTPLQLFEGRRNRRRREAPKVVVEEQESRVHYTV
 CIWRNGKVLGSGMAIADVTLLSGFHALRADLEKLTSLSDRYVSHFETEGPHVLLYFDSVPT SRECVGFEA
 VQEVVGLVQPASATLYDYNNPERRCSVFY GAPSRSLLATLCSAEVCQCAEGKCPQRRALERGLQDED
 GYRMKFACYYPVVEYGFQVKVLR EDSRAAFRLFETKITQVLFHFTKDVKAAANQMRNFLVRASCRLRLEPG
 KEYLIMGLDGATYDL EGHQPQLLDSNSWIEEMP SERLCRSTRQRAACAQLNDFLQEYGTQCQV

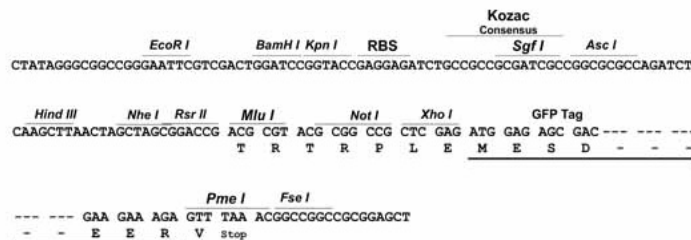
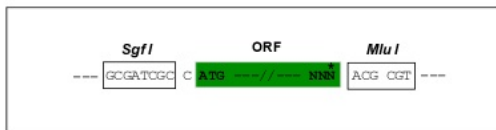
TRTRPLE - GFP Tag - V

Restriction Sites:

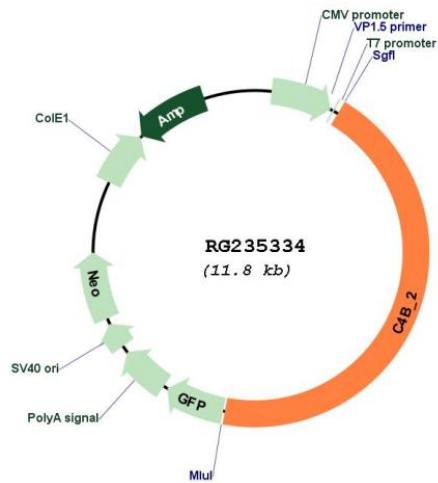
SgfI-MluI

Cloning Scheme:

Cloning sites used for ORF Shuttling:



Plasmid Map:



ACCN: NM_001242823

ORF Size: 5232 bp

OTI Disclaimer:	<p>Due to the inherent nature of this plasmid, standard methods to replicate additional amounts of DNA in E. coli are highly likely to result in mutations and/or rearrangements. Therefore, OriGene does not guarantee the capability to replicate this plasmid DNA. Additional amounts of DNA can be purchased from OriGene with batch-specific, full-sequence verification at a reduced cost. Please contact our customer care team at custsupport@origene.com or by calling 301.340.3188 option 3 for pricing and delivery.</p> <p>The molecular sequence of this clone aligns with the gene accession number as a point of reference only. However, individual transcript sequences of the same gene can differ through naturally occurring variations (e.g. polymorphisms), each with its own valid existence. This clone is substantially in agreement with the reference, but a complete review of all prevailing variants is recommended prior to use. More info</p>
OTI Annotation:	This clone was engineered to express the complete ORF with an expression tag. Expression varies depending on the nature of the gene.
Components:	The ORF clone is ion-exchange column purified and shipped in a 2D barcoded Matrix tube containing 10ug of transfection-ready, dried plasmid DNA (reconstitute with 100 ul of water).
Reconstitution Method:	<ol style="list-style-type: none"> 1. Centrifuge at 5,000xg for 5min. 2. Carefully open the tube and add 100ul of sterile water to dissolve the DNA. 3. Close the tube and incubate for 10 minutes at room temperature. 4. Briefly vortex the tube and then do a quick spin (less than 5000xg) to concentrate the liquid at the bottom. 5. Store the suspended plasmid at -20°C. The DNA is stable for at least one year from date of shipping when stored at -20°C.
RefSeq:	<u>NM_001242823.2</u> , <u>NP_001229752.1</u>
RefSeq Size:	5427 bp
RefSeq ORF:	5235 bp
Locus ID:	100293534
UniProt ID:	<u>P0C0L5</u>
Cytogenetics:	6p21.3 alternate reference locus

Gene Summary:

This gene encodes the basic form of complement factor 4, part of the classical activation pathway. The protein is expressed as a single chain precursor which is proteolytically cleaved into a trimer of alpha, beta, and gamma chains prior to secretion. The trimer provides a surface for interaction between the antigen-antibody complex and other complement components. The alpha chain may be cleaved to release C4 anaphylatoxin, a mediator of local inflammation. Deficiency of this protein is associated with systemic lupus erythematosus. This gene localizes to the major histocompatibility complex (MHC) class III region on chromosome 6. Varying haplotypes of this gene cluster exist, such that individuals may have 1, 2, or 3 copies of this gene. In addition, this gene exists as a long form and a short form due to the presence or absence of a 6.4 kb endogenous HERV-K retrovirus in intron 9. This GeneID and its associated RefSeq record represent a second copy of C4B found on ALT_REF_LOCI_7. [provided by RefSeq, Jul 2011]