

Product datasheet for **RG235333**

I Afadin (AFDN) (NM_001207008) Human Tagged ORF Clone

Product data:

Product Type:	Expression Plasmids
Product Name:	I Afadin (AFDN) (NM_001207008) Human Tagged ORF Clone
Tag:	TurboGFP
Symbol:	AFDN
Synonyms:	AF6; I-afadin; MLL-AF6; MLLT4
Mammalian Cell Selection:	Neomycin
Vector:	pCMV6-AC-GFP (PS100010)
E. coli Selection:	Ampicillin (100 ug/mL)
ORF Nucleotide Sequence:	>RG235333 representing NM_001207008 Red=Cloning site Blue=ORF Green=Tags(s)

TTTTGTAATACGACTCACTATAGGGCGGCCGGAATTCGTCGACTGGATCCGGTACCGAGGAGATCTGCC
GCC**CGATCGCC**

ATGTCGGCGGGCGCCGTGACGAGGAGCGCGGAAGCTGGCCGACATCATCCACCACTGGAACGCCAACCGCTGGACCTGTTTCGAGATCAGCCAGCCGACCGAGGATTTGGAGTTCCATGGAGTGATGAGATTTTATTTCAAGATAAAGCTGCTGGAACTTTGCAACAAAATGTATTCGGGTCTCTAGTACTGCCACCACTCAAGATGTAATCGAAACGCTCGCGGAGAAATTCGACCTGATATGCGAATGCTGTCCTCTCCCAAGTATTCACCTCTATGAAGTGATGTCAGCGGAGAAAGAAGATTGGATATAGATGAGAAACCTCTAGTTGTACAAGTGAATTGAAACAAAGATGATCGGGAAAGGCAGATTTGTTCTTAAGAAATGAGAATGACGCCATTCTCCTAAGGCTCAAAGTAATGGACCTGAAAAGCAGGAAAAAGAAGGGTTATCCAGAATTCAGAGAACTCTCTCAAAGAAAAGAAAAGAAGGAAAAAGAAGAGAGAAAAAGAGGCATTGCGACAGGCATCTGATAAAGATGATAGACCTTTCCAAGGGGAGGATGTTGAAAATTCGACTGGCTGCTGAGGTTTACAAAGACATGCCGAAAACAGCTTTACTCGAACCTTTCTAATCCTGAGGTGTTATGAAACGACGAGGCAGCAAAAATGGAAAAAGAGAATGCAGGAATTCGGAGCTCAGATGGGCGCCTGATTCAGGTGGAACATTGAGAATTTATGAGATAGTTTAAACCAAATATTCCCTACAAGACAATCCTGCTGTCTACTACAGACTCTGCAGACTTTGCTGTGGCTGAAGCTTTAGAGAAGTATGGTCTGGAAAAAGAAAACCTAAGGATTACTGCATCGCCGGGTTATGCTTCTCCTGAGCCCCAGCATTCTGATGAAAAGGGTGCTAAAGAAATTTCTTGATGATGATGAGTGTCCTTTACAAATCTTCAGGGAATGGCCAAGTGACAAGGGATTTTAGTCTTTCAGTTGAAGAGGAGGCCACCAAGACATCCAAAGAAAACCAAGAAACACTTGAAGGCAAGACACCCAAGGAAAGGAGAGAGCTGACGGTCTGGCTATGGCTCCACCCTTCTCCGGAGAAGCTGCCCTATTTAGTAGAGTTAAGCCAGATGGTTCTGACTCTAGAGATAAGCCTAAGCTTTACCGCTTCAGTTAAGTGTACTGAAGTTGGGACAGAAAAGTTGGATGACAACCTATCCAGTTGTTTGGCCAGGAATTCAGCCCCATCACTGTGACCTTACCAACATGGATGGAGTGGTCACTGTGACGCCAGAAAGTATGGACGAGAAACCTACGTGGAAGGCCAGCGCATCTCAGAAACCAACATGCTGCAGAGTGGCATGAAAGTGCAGTTGGGGCTCCCATGTATTTAAGTTTGTGGACCCAGTCAGGATCAT



[View online »](#)

GCTCTTGCAAAAAGATCTGTGGATGGAGGCCTGATGGTTAAGGGCCCAAGACATAAACCTGGAATTGTT
 AGGAGACAACCTTTTGATTTGGGAGGAGATATTCATAGTGGGACAGCATTACCGACAAGCAAGAGCACCAC
 TAGGCTGGACAGCGACAGAGTGTCTGCTCTAGCACAGCCGAGCGGGGAATGGTGAAGCCGATGATC
 AGAGTAGAACAGCAGCCAGATTATCGCAGGCAAGAAAGCAGAACACAGGATGCTTCTGGGCTGAGCTGA
 TACTACCTGCAAGCATTGAATTCAGGAAAAGTTCTGAAGATTCATTTTGTCTGCCATTATAAATTATAC
 TAATAGCTCTACAGTCCACTTTAAGTTGTCCCCTACATATGTATTATATATGGCATGCCGGTATGATTG
 TCCAACCAAGTACAGACCTGACATCAGCCCTACAGAGCGCACACATAAAGTCATTGCGATCGTCAACAAGA
 TGGTGAGCATGATGGAGGTGTCATCCAGAAACAGAAGAATATTGCAGGGGCATTGGCCTTCTGGATGGC
 AAATGCATCTGAACTTCTCAACTTCATTAAAGCAAGACCGAGACCTTAGTCGGATCACACTGGATGCTCAA
 GATGTTTTAGCACATTTGGTTCAAATGGCATTAAATACTTGGTTCAGTGTCTTCAATCAGAACTTAATA
 ATTACATGCCAGCCTTTCTAGATGACCCTGAAGAGAACAGTCTGCAACGACCAAAAATAGATGATGTGCT
 GCACACGCTCACAGGAGCCATGTCCTTGTCTACGACGCTGCAGAGTCAATGCCGCCTGACCATCCAGCTC
 TTCTCTCAGCTCTCCACTTCATCAATATGTGGCTGTTCAATAGATTGGTGACCGACCCAGATTCGGGGC
 TGTGCTCCATTACTGGGGTGCATTATCCGTGACAGTGGGCCATATTGAAGCCTGGGCTGAGAAGCA
 GGGGCTGGAAGTGGCTGCGGACTGTCATCTGAGCAGGATCGTGCAGGCAACGACTTGTACCATGGAT
 AAGTATGCACCTGATGACATCCAAATATAAACAGCACCTGCTTAAAGTTAAATTCATTACAACCTCAAG
 CCTTATTACAGAACTATCACTGTGCACCTGATGAGCCTTTTATCCCAACGGATCTTATAGAAAATGTAGT
 GACTGTGGCTGAAAACACTGCCGATGAGCTGGCCCGCAGTGTGGAAGGGAAAGTGCAGTTGGAGGAGGAT
 CCTGATCTGCAGCTGCCGTTTCTTTTGGCAGAAGATGGTTATTCTTGTGATGTTGTCAGAAAACATCCAA
 ATGGTTTACAAGAATTTTAGACCCTCTGTGCCAGAGAGGATTTTGCAGGTTAATTCCTCACACACGTTT
 ACCAGGTAAGTGGACAATATATTTGAAGTGCAGATTATGAAAGTCACCTTCTGCGTGAGAACACAGAG
 CTGGCTCAGCCTCTGAGGAAAGAACCTGAAATAACTGACCTGACCTAAAAAGCAGAATGGAATGGGCC
 TTAGCATTTGTTGCAGCAAAGGGTGTGGTCAAGATAAACTAGGAATCTATGTGAAGTCGGTTGTGAAGG
 AGGTGCTGCAGATGATGGACGTCTAGTGCAGGTGATCAGTCCCTCAGTGTGGATGGACGAAGTCTGGTT
 GGACTCTCTCAGGAAAGGGCGGCAAGACTCATGACAAGAACAAGCTCTGTGGTGACACTGGAAGTAGCAA
 AGCAGGGTGCCATCTACCACGGTCTGGCCACCCTTCTCAATCAGCCATCCCCATGATGCAGAGAATTTT
 AGATCGTCTGGCTCAGGTAAACCCCGACCAAGAGTGAAGGCTTTGAGCTCTATAATAATTCAACTCAA
 AATGGGTCTCCTGAGAGTCTCAGCTGCCTTGGCAGAATATAGTGAACCAAGAAATGGCTGGTGTG
 ACAGACTGATGAAAAATAGAGCTGATCACCGTCCAGCCCAACGTAGCAATCAGCCTCCTAGTCTGG
 AGGAAAAGTGCATATGCCTCTGGAACAACAGCGAAGATAACATCTGTCTACTGGAACCTCTGCACT
 GAGGAGCAGACGCTCCGCTAGACCTGAAGCCTACCCATCCCCACTCAGACGTACACCAGAGAGTATT
 TTACCTTCCCAGCTTCCAAATCCAGGATCGGATGGCTCCTCCTCAGAACCAGTGGCCAAATATAGAGGA
 AAAGCCACATATGCACACAGATAGTAATCATTCCAGTATTGCAATTCAGCGTGTTACACGTTCCCAAGAA
 GAACCTCGAGAAGATAAAGCTTACCAACTTGAGCGGCATCGAATAGAGGCAGCTATGGACCGAAAAGTCTG
 ATAGTGATATGTGGATAAATCAGAGCTCCTCACTGGACTCCAGTACCTCTAGCCAGGAGCATCTGAACCA
 TTCTCTAAGTCGGTCACCCCTGCTCCACACTGACCAAAAGTGGCCCTGGCCGTTGAAAAACACCGCA
 GCCATACCGGCCACCCCTGTGGCCGTCTCCAGCCAATCCGAACAGACCTGCCTCCGCCACCCCGCCAC
 CTCCAGTCCACTATGCCGGTGATTTGATGGAATGTCCATGGATTTGCCTCTCCACCACCCCTTCCGC
 CAACCAGATAGGGCTGCCGTCTGCGCAGGTGGCTGCTGCTGAACGGAGAAAAGAGAGAAGAACATCAGCGT
 TGGTATGAGAAGGAGAAGGCCCGCTGGAGGAGGAGCGGGAGAGGAAGCGGAGAGAGCAGGAGAGGAAGT
 TGGGCCAGATGCCCACTCAGTCCTTAAACCCTGCTCCGTTTTCTCCCCTGACTGCACAGCAGATGAAGCC
 CGAAAAGCCTTCCACACTCCAGCGGCCACAGGAAACAGTCATTGCGGAGCTGCAGCCTCAGCAGCAGCCC
 CGCAGCATCGAGCGCAGAGACTTGCAGTACATTACAGTACAGAAAGAGGAGCTTTCTCGGGGACAGTC
 TGTCCCCGACCCGTGGAAGCGGGACGCCAAGGAGAAGCTGGAGAAGCAGCAGCAGATGCACATCGTGGA
 CATGCTGAGCAAGGAGATCCAGGAGCTCCAGAGCAAACCGGACCGCAGCGCCGAGGAGAGCGACCGGCTG
 CGCAAGCTCATGTGGAGTGGCAGTCCAGAAGAGACTCCAGGAGTGAAGCAGAAGGACGAAGATGACG
 AGGAGGAGGAGGACGATGATGTGGACCATGCTGATCATGCAGCGCCTGGAGGCTGAACGAAGAGCGAG
 GTTGCAGGACGAGGAGCGGAGCGGCGCAGCAGCAGTTAGAAGAGATGCGCAAGCGGGAAGCGGAAGACCGA
 GCGAGGCAAGAGGAAGAGCGCCGCGGCGAGGAGGAGCGAACAACGAGACGCTGAAGAAAAGAGGC
 GACAGGAAGAAGGGTATTACAGCCGCTGGAAGCCGAGAGGCGCAGACAGCAGCAGGCGCGCGCAG
 GTTGCTGGAGCCCGAGGCGCCCGACCAAACTTTACCCAGGATCTACTGGAGCAGCTGTTGGAGCCCAT
 GACGCTGTGGGATGCAAAAAGAGAAGCGCTCTAAAAGCCAAGATGCAGATTCACCTGGAAGTCTGGGG

CCCTGAAAACCTTGACATTCAAGGAACGCCAGCGTCTTTTTTCAACAAGTCAAGATGTATCCAATAAAGT
GAAAGTCTCTCGTAAATTAACAGAACTGGAGAATGAACTGAACACAAAG

ACGCGTACGCGGCCGCTCGAG - GFP Tag - GTTTAA

Protein Sequence:

>RG235333 representing NM_001207008
Red=Cloning site Green=Tags(s)

MSAGGRDEERRKLADIIHHWNANRLDLFEISQPTEDLEFHGVMRFYFQDKAAGNFATKCIKRVSTATTQD
VIETLAEKFRPDMRMLSSPKYSLYEVHVSGERRLDIDEKPLVVQLNWNKDDREGRFVLKNENDAIPPKAQ
SNGPEKQEKEGVIQNFKRTL SKKEKKEKKKREKEALRQASDKDDRPFGQEDVENSRLAAEVYKDMPETSF
TRTISNPEVVMKRRRQKLEKRMQEFRRSDGRPDSSGGLRIYADSLKPNIPYKTI LLSTTDPADFAVAEA
LEKYGLEKENPKDYCIARVMLPPGAQHSDEKGAKEIILDDDECPLQIFREWP SDKGILVFQLKRRPPDHI
PKKTKKHLEGKTPKGERADGSGYGSTLPPEKLPYLVELSPDGSDSRDKPKLYRLQLSVTEVGTAKLDDN
SIQLFGPGIQPHHCDLTNMDGVVTVTPRSMDAETYVEGQRISETTMLQSGMKVQFGASHVFKFVDP SQDH
ALAKRSVDGGLMVKGPRHKPGIVQETTFDLGGDIHSGTALPTSKSTTRLDSDRVSSASSTAERGMVKPMI
RVEQQPDYRRQESRTQDASGPELILPASIEFRESSEDSFLSAIINYTNSSTVHFKLSPTYVLYMACRYVL
SNQYRPDISPTERTHKVIAVVKMVMMEGVIQKQKNIAGALAFWMANASELLNF IKQDRDL SRITLDAQ
DVL AHLVQMAFKYL VHCLQSELNNYMPAFLDDPEENSLQRPKIDDLVHTLTGAMSLLRRCRVNAALTIQL
FSQLFHF INMWLFNRLVTDPSGLCSHYWGAIIRQQLGHIEAWAEKQGLELAADCHLSRIVQATLLTMD
KYAPDDIPNINSTCFKLNLSLQLQALLQNYHCAPDEPFIPDLEIENVVTVVAENTADELARS DGREVLQLEED
PDLQLPFLLPEDGYSCDVVRNIPNGLQEFLDPLCQRGFCRLIPHTRSPGTWTIYFEGADYESHLLRENTE
LAQPLRKEPEIITVTLKKQNGMGLSIVAAGKAGQDKLGIYVKS VVKGAADDGRLAAGDQLLSVDGRSLV
GLSQERAAELMTRTSSVVTLEVAKQGA IYHGLATLLNQPSMMQRI SDRRGSGKPRPKSEGFEL YNNSTQ
NGSPESPQLPWA EYSEPKKLP GDDRLMKNRADHRSSPNVANQPPSPGGKSAYASGTTAKITSVSTGNLCT
EEQTPPPRPEAYIPTQTYTREYFTFPASKSQDRMAPPQNQWPNYEEKPHMHTDSNHSSIAIQRVTRSQE
ELREDKAYQLERHRIEAMDRKSDSDMWINQSSSLDSSTSSQEHLNHSSKSVTPASTLTKSGPGRWKTPA
AIPATPVAVSQPIRTDLPPPPPPPVHYAGDFDGMSMDLPLPPPPSANQIGLPSAQVAAAERRKREEHQR
WYEKEKARLEEEERERKRREKERKLGQMR TQSLNPAFFSPLTAQQMKPEKPSLQRPQETVIRELQPQQQP
RTIERRDLQYITVSKEELSSGDSLSPDPWKRAKEKLEKQQQMHI VMLSKEIQELQSKPDRSAEESDRL
RKLMLWQFQKRLQESKQKDEDEDEEEDDDVDTMLIMQRLEAERRARLQDEERRRQQQLEEMRKREAE DR
ARQEEERRRQEEERTKRDAEEKRRQEEGYSRLEAERRRQHDEAARRLLEPEAPGPNSTGAAVGAH
DACRDAKEKRSKSDADSPGSSGAPENLTFKERQRLFSQGDVSNKVKASRKLTELENELNTK

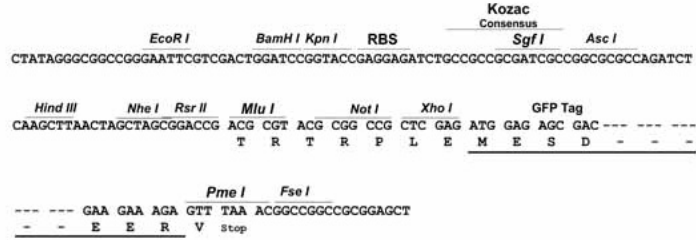
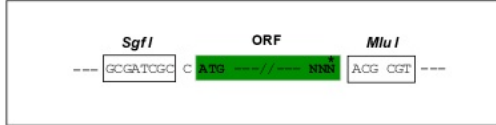
TRTRPLE - GFP Tag - V

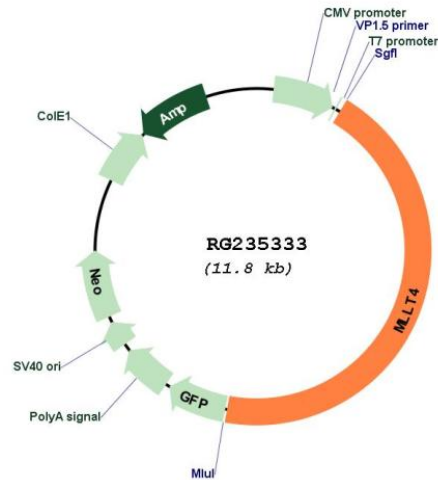
Restriction Sites:

SgfI-MluI

Cloning Scheme:

Cloning sites used for ORF Shutting:



Plasmid Map:


ACCN: NM_001207008

ORF Size: 5229 bp

OTI Disclaimer: The molecular sequence of this clone aligns with the gene accession number as a point of reference only. However, individual transcript sequences of the same gene can differ through naturally occurring variations (e.g. polymorphisms), each with its own valid existence. This clone is substantially in agreement with the reference, but a complete review of all prevailing variants is recommended prior to use. [More info](#)

OTI Annotation: This clone was engineered to express the complete ORF with an expression tag. Expression varies depending on the nature of the gene.

Components: The ORF clone is ion-exchange column purified and shipped in a 2D barcoded Matrix tube containing 10ug of transfection-ready, dried plasmid DNA (reconstitute with 100 ul of water).

Reconstitution Method:

1. Centrifuge at 5,000xg for 5min.
2. Carefully open the tube and add 100ul of sterile water to dissolve the DNA.
3. Close the tube and incubate for 10 minutes at room temperature.
4. Briefly vortex the tube and then do a quick spin (less than 5000xg) to concentrate the liquid at the bottom.
5. Store the suspended plasmid at -20°C. The DNA is stable for at least one year from date of shipping when stored at -20°C.

RefSeq: [NM_001207008.1](#), [NP_001193937.1](#)

RefSeq Size: 7459 bp

RefSeq ORF: 5232 bp

Locus ID: 4301

UniProt ID: [P55196](#)

Cytogenetics: 6q27

Protein Families: Druggable Genome

Protein Pathways: Adherens junction, Leukocyte transendothelial migration, Tight junction

Gene Summary: This gene encodes a multi-domain protein involved in signaling and organization of cell junctions during embryogenesis. It has also been identified as the fusion partner of acute lymphoblastic leukemia (ALL-1) gene, involved in acute myeloid leukemias with t(6;11) (q27;q23) translocation. Alternatively spliced transcript variants encoding different isoforms have been described for this gene, however, not all have been fully characterized.[provided by RefSeq, May 2011]