

Product datasheet for **RG235326**

TRPM1 (NM_001252020) Human Tagged ORF Clone

Product data:

Product Type: Expression Plasmids
Product Name: TRPM1 (NM_001252020) Human Tagged ORF Clone
Tag: TurboGFP
Symbol: TRPM1
Synonyms: CSNB1C; LTRPC1; MLSN1
Mammalian Cell Selection: Neomycin
Vector: pCMV6-AC-GFP (PS100010)
E. coli Selection: Ampicillin (100 ug/mL)
ORF Nucleotide Sequence: >RG235326 representing NM_001252020
Red=Cloning site Blue=ORF Green=Tags(s)

TTTTGTAATACGACTCACTATAGGGCGGCCGGAATTCGTCGACTGGATCCGGTACCGAGGAGATCTGCC
GCC**CGATCGCC**

ATGAGCTCCTCAAGCGGGGCTCGCTCAAGAGCTCCACATCAGGGTCGCAGAAGGGTCAGAAATCTTGGATAGAGAAAACCTTTTGCAAACGGGAATGTATCTTTGTAATTCCTAGCATGAAAGACTCTAACAGGTGTTGCTGTGGCCAGTTCACCAACCAGCATATCCCCCTCTGCCAAGTGAACACCCAGCAAAAAAAGAGAGGAAAGCAAACAGGTGGAGACTCAGCCTGAGAAATGGTCTGTTGCCAAGCACACCCAGAGCTACCCAACAGATTCCTATGGAGTTCTTGAATTCAGGGTGGCGGATATTCCAATAAAGCCATGTATATCCGTGTATCCTATGACCAAGCCAGACTCACTGCTCCATCTCATGGTGAAGATTGGCAGCTGGAACCCCAAGCTCTTAATATCTGTGCATGGAGGCCTCCAGAAGTTTGGATGCAGCCCAAGCTGAAACAAGTCTTTGGGAAAGGCCTGATCAAGGCTGCTATGACCACCGGGGCTGGATCTTCACCGGGGGTGTGAGCACAGGTGTTATCAGCCACGTAGGGGATGCCTTGAAAGACCACTCCTCCAAGTCCAGAGGCCGGTGTGTGCTATAGGAATTGCTCCATGGGCATCGTGGAGAATAAGGAAGACCTGGTTGAAAAGGATGTAACAAGAGTGTACCAGACCATGTCCAACCTCTAAGTAAGCTCTCTGTGCTCAACAACCTCCACACCCACTTCATCCTGGCTGACAATGGCACCCCTGGCAAGTATGGCGCCGAGGTGAAGCTGCGAAGGCTGCTGAAAAGCAGCATCTCCCTGCAGAAGATCAACACAAGACTGGGCAGGGCGTGCCCTCGTGGTCTCGTGGTGGAGGGGGCCCTAACGTGGTGTCCATCGTCTTGGAAATACCTGCAAGAAGACCTCCATCCCTGTGGTATTTGTGATGGCAGCGGACGTGCCTCGGACATCCTGTCTTTGCGCACAAGTACTGTGAAGAAGGCGGAATAATAAATGAGTCCCTCAGGGAGCAGTTCTAGTTACCATTAGAAAACATTTAATTATAATAAGGCACAATCACATCAGCTGTTTGAATTATAATGGAGTGCATGAAGAAGAAAGAACTCGTCACTGTGTTTCAAGATGGGTTCTGAGGGCCAGCAGGACATCGAGATGGCAATTTAACTGCCCTGCTGAAAGGAACAACGATCTGCTCCAGATCAGCTGAGCTTGGCACTGGCTTGAACCGCTGGACATAGCACGAAGCCAGATCTTTGTCTTTGGGCCCACTGGCCGCCCTGGGAAGCCTGGCACCCCGACGGACGAAAGCCACGGAGAAGGAGAAGAACCCATGGCCACCACCAAGGGAGGAAGAGAAAAGGGAAAGGCAAGAAGAAGGGAAAGTAAAGAGGAAGTGGAGGAAGAACTGACCCCGAAG



[View online >](#)

ATAGAGCTGCTGAACTGGGTGAATGCTTTGGAGCAAGCGATGCTAGATGCTTTAGTCTTAGATCGTGTCG
ACTTTGTGAAGCTCCTGATTGAAAACGGAGTGAACATGCAACACTTTCTGACCATTCCGAGGCTGGAGGA
GCTTTATAACACAAGACTGGGTCCACCAAAACACTTTCATCTGCTGGTGGAGGATGTGAAAAAGAGCAAC
CTTCCGCTGATTACCACATCAGCCTCATAGACATCGGGCTCGTGTGGAGTACCTCATGGGAGGAGCCT
ACCGCTGCAACTACACTCGAAAACTTTCCGACCCTTTACAACAATGTTTGGACCAAGAGGCCTAA
AGCTCTTAACTTCTGGGAATGGAAGATGATGAGCCTCCAGCTAAAGGGAAGAAAAAGAAAAAGAGAAA
AAGGAGGAAGAGATCGACATTGATGTGGACGACCCTGCCGTGAGTCGGTCCAGTATCCCTCCACGAGC
TGATGGTGTGGGAGTGTGATGAAACGCCAGAAAATGGCAGTGTTCCTCTGGCAGCGAGGGAAGAGAG
CATGGCCAAGGCCCTGGTGGCCTGCAAGCTCTACAAGGCCATGGCCACGAGTCTCCGAGAGTGATCTG
GTGGATGACATCTCCAGGACTTGGATAACAATCCAAAGACTTCGGCCAGCTTGCTTTGGAGTTATTAG
ACCAGTCTATAAGCATGACGAGCAGATCGCTATGAAACTCCTGACCTACGAGCTGAAAACTGGAGCAA
CTCGACCTGCCTCAAACCTGGCCGTGGCAGCCAAACACCGGGACTTCATTGCTCACACCTGCAGCCAGATG
CTGCTGACCGATATGTGGATGGGAAGACTGCGGATGCGGAAGAACCCCGGCTGAAGTTATCATGGGGA
TTCTTCTACCCCCACCATCTTGTTTTTGGAATTCGCACATATGATGATTTCTCGTATCAAACATCCAA
GGAAAATGAGGATGGCAAAGAAAAAGAGAGGAAAATACGGATGCAAATGCAGATGCTGGCTCAAGAAAG
GGGGATGAGGAGAACGAGCAGAAAAACAGAGAAGTATCCCATCGGAACAAAGATCTGTGAATTCTATA
ACGCGCCCATTTGCAAGTCTGGTTTTACACAATATCATACTTGGGCTACCTGCTGCTGTTAACTACGT
CATCCTGGTGGGATGGATGGCTGGCCGTCCCTCCAGGAGTGGATCGTACTCTCATCGTGAGCCTG
GCGTTAGAGAAGATACGAGAGATCCCTATGTCAGAACCAGGCAAACCTCAGCCAGAAAAATCAAAGTTTGGC
TTCAGGAGTACTGGAACATCACAGATCTCGTGGCCATTTCCACATTATGATTGGAGCAATTTCTCGCCT
ACAGAACCAGCCCTACATGGGCTATGGCCGGGTGATCTACTGTGTGGATATCATTTCTGGTACATCCGT
GTCCCTGGACATCTTTGGTGTCAACAAGTATCTGGGGCCATACGTGATGATGATTGGAAAGATGATGATCG
ACATCTGTACTTTGTGGTCAATGCTGGTCTGCTCATGAGTTTCGGAGTAGCCCGTCAAGCCATCT
GCATCCAGAGGAGAAGCCCTCTTGGAACTGGCCCGAAAACATCTCTACATGCCCCTACTGGATGATCTAT
GGAGAGGTGTTTGCAGACCAGATAGACCTCTACGCCATGGAATTAATCCTCCTTGTGGTGAAGCCTAT
ATGATGAGGAGGCAAGCGGCTTCTCCCTGTATCCCCGGCGCCTGGCTCACTCCAGCACTCATGGCGTG
CTATCTACTGGTCGCAACATCCTGCTGGTGAACCTGCTGATTGCTGTGTTCAACAATACCTTCTTTGAA
GTAAAATCAATATCCAACCAGGTGTGGAAGTCCAGCGATATCAGCTGATTATGACATTTATGACAGGC
CAGTCTGCCCCACCGATGATCATTAAAGCCACATCTACATCATTATGCGTCTCAGCGGCCGCTG
CAGGAAAAAGAGAGAAGGGGACCAAGAGGAACGGGATCGTGGATTGAAGCTTTCCTTAGCGACGAGGAG
CTAAAGAGGCTGCATGAGTTCGAGGAGCAGTGCCTGCAGGAGCACTTCGGGAGAAAGGAGGATGAGCAGC
AGTCGTCCAGCGACGAGCGCATCCGGGTCACTTCTGAAAGAGTTGAAAATATGTCAATGAGGTTGGAAGA
AATCAATGAAAGAGAACTTTTATGAAAATCCCTGCAGACTGTTGACCTTCGACTTGCTCAGTAGAA
GAATTATCAACAGAATGGTGAATGCTCTTGAATACTTGGCGGAATCGACAGGTCTGACCTGATCCAGG
CACGGTCCCGGCTTCTTCTGAATGTGAGGCAACGTATCTTCCGGCAAAGCAGCATCAATAGCGCTGA
TGGCTACAGCTTGATATCGATATCATTAAACGGAGAAGAGTTATTATTGAGGATACATCTCTCCACG
TCACCAGGGACAGGAGTCAAGAAAAACCTGTTCCTTCCGTATAAAGGAAGAGAAGGACGTGAAAACGC
ACCTAGTCCCAGAATGTCAGAACAGTCTTACCTTTCACTGGCACAAGCACATCAGCAACCCAGATGG
CAGTCACCTTGCAGTAGATGACTTAAAGAACGCTGAAGAGTCAAATTAGTCCAGATATTGGGATTTCA
AAGGAAGATGATGAAAGACAGACAGACTCTAAAAAAGAAGAACTATTTCCCAAGTTTAAATAAAACAG
ATGTGATACATGGACAGGACAAATCAGATGTTCAAAACACTCAGTAACAGTGGAACGACAAAATATAGA
AGGCACTATTTCTATCCCTGGAAGAAACAAAATTACACGCTATTTCCCGATGAAACGATCAATGCT
TGTAAAACAATGAAGTCCAGAAGCTTCTGCTATTCCCGGGGAAGAAAGCTGGTGGTGGGGTTAACCAGG
ATGTAGAGTACAGTTCAATCACGGACCAGCAATTGACGACGGAATGGCAATGCCAAGTTCAAAAGATCAC
GCGCTCTCATAGCACAGATATTCCTTACATTGTGTCGGAAGCTGCAGTGAAGCTGAGCATAAAGAGCAG
TTTGCAGATATGCAAGATGAACACCATGTCGCTGAAGCAATTCCTCGAATCCCTCGCTTGTCCCTAACCA
TACTGACAGAAATGGGATGGAAAATCTACTGTCTGTGAAGCCAGATCAAATTTGGGATCCCCTCTCT
CAGGTCAAAAAGTTTACATGGACATCCTAGGAATGTGAAATCCATTCAGGGAAAGTTAGACAGATCTGGA
CATGCCAGTAGTGAAGCAGCTTAGTAATTGTGCTGGAATGACAGCAGAAAGAAAAAGGTTAAGAAAG
AGAAAGCTTCCACAGAACTGAATGC

ACGCGTACGCGGCCGCTCGAG - GFP Tag - GTTTAA

Protein Sequence: >RG235326 representing NM_001252020
 Red=Cloning site Green=Tags(s)

MSSFKRGLSKSSTSGSQKGQKSWIEKTFCKRECIFVIPSMDKSNRCCCGFTNQHIPPLPSATPSKNEE
 SKQVETQPEKWSVAKHTQSYPTDSYGVLEFQGGGYSNKAMYIRVSYDTKPDSSLHLMVKDWQLELPKLLI
 SVHGGLQNFEMQPKLKQVFGKGLIKAAMTTGAWIFTGGVSTGVI SHVDALDKHSSKSRGRVCAIGIAPW
 GIVENKEDLVGKDVTRVYQTMNSNPLSKLSVLNNSHTHFLADNGTLGKYGAEVKLRLLLEKHISLQKINT
 RLGQGVPLVGLVVEGGPNVSVIVLEYLQEPPPIPVVICDGSGRASDILSF AHKYCEEGLINESLREQLL
 VTIQKTFNYNKAQSHQLFAIIMECMKKKELVTVFRMGSEQQDIEMAILTALLKGTNVSAPDQLSLALAW
 NRVDIARSQIFVFGPHWPPLGSLAPPTDSKATEKEKKPPMATTGGRGKGGKGGKGVKVEEVEEEDPRK
 IELLNWNVALEQAMLDALVLDVDFVKLLIENGVNMQHFLTIPRLEELYNTRLGPPNTLHLLVRDVKSN
 LPPDYHISLIDIGLVLEYLMGGAYRCNYTRKNFRTLNNLFGPKRPKALKLLGMEDEPPAKGKKKKKK
 KEEEIDIDVDDPAVSRFQYPFHELMVWAVLMKRQKMAVFLWQGEESMAKALVACKLYKAMAHESSSDL
 VDDISQDLDNNSKDFGQLALELLDQSYKHDEQIAMKLLTYELKNWSNSTCLKLAVAAKHRDFAHTCSQM
 LLDMMWGRRLMRKNPGLKVIMGILLPPTILFLEFRTYDDFSYQTSKENEDGKEKEEENTDANADAGSRK
 GDEENEHKKQRSIPIGTKICEFYNAPIVKFWFYTISYLGVLLL FNYVILVRMDGWPQLQEWIVISYIVSL
 ALEKIREILMSEPGKLSQKIKVWLQEYWNITDLVAISTFMIGAILRLQNQPYMGYGRVIYCVDIIFWYIR
 VLDIFGVNKYLGPIYMMIGKMMIDMLYFVIMLVVLMFSGVARQAILHPEEKPSWKLARNIFYMPYMIY
 GEVFADQIDL YAMEINPPCGENLYDEEGKRLPPCIPGAWLTPALMACYLLVANILLVNL IAVFNNTFFE
 VKSISNQVWKFQRYQLIMTFHDRPVLPPMIILSHIYIIIMRLSGRCRKKREGDQEERDRGLKFLSDEE
 LKRLHEFEEQCQVEHFREKEDEQSSSDERIRVTSERVENMSMRLEEINERETFMTSLQTVDLRLAOLE
 ELSNRMVNALENLAGIDRSDLIQARSRASSECEATYLLRQSSINSADGYSLYRYHFNGEELLFEDTSLST
 SPGTGVRKKTCSFRIKEEKDVKTHLVPECQNSLHL SLGTSTSATPDGSHLAVDDLKNAEESKLGPDIGIS
 KEDDERQTD SKKEETISPSLNKTDVIHGQDKSDVQNTQLTVETTNIEGTISYPLEETKITRYFPDETINA
 CKTMKRSFVYSRGRKLVGGVNDVEYSSITDQQLTTEWQCQVQKITRSHSTDIPYIVSEAAVAEHEKEQ
 FADMQDEHHVAEAI PRIPRLSLTITDRNGMENLLSVKPDQTLGFPSLRKSLHGHPRNVKSIQGKLD RSG
 HASSVSSLVIVSGMTAEKKVKKEKASTETEC

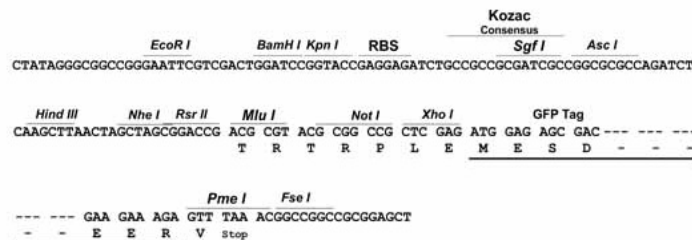
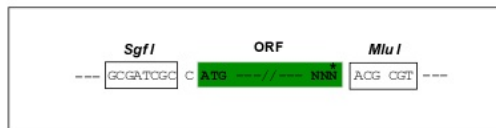
TRTRPLE - GFP Tag - V

Restriction Sites:

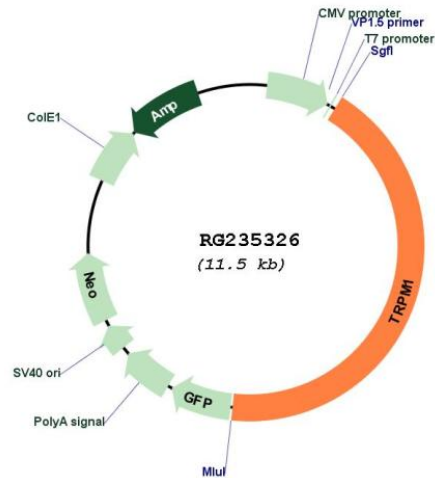
Sgfl-MluI

Cloning Scheme:

Cloning sites used for ORF Shutting:



Plasmid Map:



ACCN: NM_001252020

ORF Size: 4926 bp

OTI Disclaimer: The molecular sequence of this clone aligns with the gene accession number as a point of reference only. However, individual transcript sequences of the same gene can differ through naturally occurring variations (e.g. polymorphisms), each with its own valid existence. This clone is substantially in agreement with the reference, but a complete review of all prevailing variants is recommended prior to use. [More info](#)

OTI Annotation: This clone was engineered to express the complete ORF with an expression tag. Expression varies depending on the nature of the gene.

Components: The ORF clone is ion-exchange column purified and shipped in a 2D barcoded Matrix tube containing 10ug of transfection-ready, dried plasmid DNA (reconstitute with 100 ul of water).

Reconstitution Method: 1. Centrifuge at 5,000xg for 5min.
2. Carefully open the tube and add 100ul of sterile water to dissolve the DNA.
3. Close the tube and incubate for 10 minutes at room temperature.
4. Briefly vortex the tube and then do a quick spin (less than 5000xg) to concentrate the liquid at the bottom.
5. Store the suspended plasmid at -20°C. The DNA is stable for at least one year from date of shipping when stored at -20°C.

RefSeq: [NM_001252020.1](#), [NP_001238949.1](#)

RefSeq Size: 6022 bp

RefSeq ORF: 4929 bp

Locus ID:	4308
UniProt ID:	Q7Z4N2
Cytogenetics:	15q13.3
Protein Families:	Druggable Genome, Ion Channels: Transient receptor potential, Transmembrane
Gene Summary:	<p>This gene encodes a member of the transient receptor potential melastatin subfamily of transient receptor potential ion channels. The encoded protein is a calcium permeable cation channel that is expressed in melanocytes and may play a role in melanin synthesis. Specific mutations in this gene are the cause autosomal recessive complete congenital stationary night blindness-1C. The expression of this protein is inversely correlated with melanoma aggressiveness and as such it is used as a prognostic marker for melanoma metastasis. Alternate splicing results in multiple transcript variants. [provided by RefSeq, Oct 2011]</p>