

## Product datasheet for **RG235322**

### KIF21B (NM\_001252102) Human Tagged ORF Clone

#### Product data:

Product Type:	Expression Plasmids
Product Name:	KIF21B (NM_001252102) Human Tagged ORF Clone
Tag:	TurboGFP
Symbol:	KIF21B
Mammalian Cell Selection:	Neomycin
Vector:	pCMV6-AC-GFP (PS100010)
E. coli Selection:	Ampicillin (100 ug/mL)
ORF Nucleotide Sequence:	>RG235322 representing NM_001252102 Red=Cloning site Blue=ORF Green=Tags(s)

TTTTGTAATACGACTCACTATAGGGCGGCCGGGAATTCGTCGACTGGATCCGGTACCGAGGAGATCTGCC  
GCC**CGATCGCC**

ATGGCCGGCCAGGGGGACTGCTGCGTCAAGGTGGCCGTCAAGGATCCGGCCCCAGCTGTGGAAGGAGAAGA  
TTGAGGGCTGTCACATCTGTACCTCTGTTACCCCGGGAGAGCCCCAGGTCTGCTGGGGAAGGACAAGGC  
CTTACCTATGACTTTGTCTTCGACCTGGACACCTGGCAAGAACAGATCTATTCCACCTGTGTGAGCAAG  
CTCATCGAGGGCTGCTTCGAGGGCTATAATGCCACGGTGTGCGCTATGGGCAGACGGGGCCGGGAAGA  
CGTACACCATGGGCACTGGCTTTGACATGGCAACGTCCGAGGAGGAGCAGGGCATCATCCCGAGGGCCAT  
CGCACACCTCTTTGGGGCATTGCCGAGCGCAAGCGCCGGGCACAGGAGCAGGGCGTGGCTGGACCTGAG  
TTCAAAGTCAGCGCCAGTTTCTGGAGCTCTACAACGAGGAGATCCTTGACCTGTTTGACAGCACCCGTG  
ACCCTGACACCCGCCACCGCAGGTCCAACATCAAGATCCACGAGGACGCAACCGTGGCATCTACACCAC  
TGGCGTCACTTCTCGCCTCATCCACTCCAGGAGGAGCTGATCCAGTGCCTGAAGCAGGGGGCCCTGTCC  
CGCACCACAGCCAGCACCCAGATGAACGTGCAGAGCTCACGCTCCACGCCATCTTACCATCCACCTGT  
GCCAGATGCGCATGTGCACCCAGCCGACCTGGTGAATGAGGCGGTGACTGGGCTTCTGATGGTACACC  
TCCCTCGAGTGAGTATGAGACACTACTGCTAAGTTTCACTTTGTGGACCTGGCCGGCTCAGAGCGGCTG  
AAGCGGACAGGGGCTACTGGCGAGCGGGCAAGGAGGGCATCTCCATCAACTGTGGCCTGCTGGCCTTGG  
GCAATGTGATCAGCGCCTTAGGGGACCAGAGCAAGAAGGTGGTGCACGTTCCCTACAGGGACTCCAAGCT  
CACTCGGCTCCTCCAGGATTCGCTGGGGGGCAACAGCCAGACCATCATGATCGCCTGTGTGAGCCCTCA  
GACCGAGATTTTATGGAGACCCTCAACACACTCAAATATGCCAATCGGGCCCCGAACATCAAGAACAAGG  
TGGTAGTGAACCAGGACAAGACCAGCCAGCAAATCAGTGCCTGCGGGCTGAGATTGCTCGGCTGCAGAT  
GGAGCTGATGGAGTAAAGGCGGGCAAGCGAGTATAGGAGAGGATGGCGCTGAGGGCTATAGTGATCTG  
TTCGAGAGAATGCCATGCTACAGAAGGAGAATGGGGCCCTGCGGCTGCGGGTGAAGCCATGCAGGAGG  
CCATCGATGCCATCAACAACCGGTCACCCAGCTCATGAGCCAGGAGGCAACCTGCTAGCCAAAGGC  
CGGCGATGGCAATGAGGCCATTGGTGCCTGATCCAGAACTACATCCGGGAGATCGAGGACTACGGACT  
AAGCTTCTAGAGAGTGAAGCCATGAACGAGTCCCTGCGCCGACGCTCTACGGGCTCGGCTAGGAGCC  
CCTACTCCCTGGGTGCTTCTCCAGCCGCCCGGCTTCCGGGGCAGCCCTGCCAGCTCCATGGAGGATGC



[View online »](#)

CTCGGAGGTGATCCGCAGGGCCAAGCAGGACCTGGAGCGGCTAAAGAAGAAGGAGGTCAGGCAGCGGAGG  
AAGAGCCCCGAGAAGGAAGCCTTCAAAAAGAGGGCAAACTCCAACAGGAGAACAGCGAGGAGACGGATG  
AGAACGAGGCGGAGGAGGAGGAGGAAGAGCGAGACGAGAGTGGCTGTGAGGAGGAGGAAGGGCGCGAGGA  
TGAAGATGAGGACTCGGGCAGTGAAGAGAGCCTGGTGGACTCAGACTCAGACCCCGAGGAGAAGGAGGTG  
AACTTCCAGGCGGACCTGGCCGACCTGACTTGTGAGATCGAAATCAAGCAGAAGCTGATCGACGAGCTGG  
AGAAGCCAGCGGGCGTTCAGACGCTCAAGCACCAGTATGAGGAAAAGCTGATTTCTGCTGCAGAACAA  
GATCCGAGACACACAGCTGGAGCGGACCGTGTGCTGCAGAACCTCAGCACCATGGAGTCTATACTGAG  
GAGAAGGCCAACAGATCAAGGCAGACTATGAGAAGAGGCTGCGGGAGATGAACCCGGACCTGCAGAAGC  
TGACGGCCGCCAGAAAGAGCACGCCCGCTGCTTAAGAACCAGTCGCGCTACGAGAGGGAGCTGAAGAA  
GCTACAGGCCGAGGTGGCTGAGATGAAGAAGGCCAAGGTGGCCCTGATGAAGCAGATGCGTGAGGAGCAA  
CAGCGGCGCGGCTAGTGGAGACCAAGAGGAACCGGGAGATCGCACAGCTCAAGAAGGAGCAGCGGCGAC  
AGGAGTTTCAGATCCGAGCTCTGGAGTCCAGAAGCGGCAGCAGGAGATGGTCTGAGGAGGAAGACCCA  
GGAGTTTCTGCACTGAGGCGCCTGGCCAAGCCATGTCTGAGCGGGTGGCAGGGCGTGCAGGACTAAAG  
CCACCCATGCTGGACTCTGGGGTGAAGGTGTCGCCAGCACTACCTCATCTGAGGCTGAATCAGGGGCC  
GCTCTGTCTCCAGCATCGTGCAGTGAACCCGCAAAATCAACCACTTCTTGGGGGACCATCTGCGCC  
CACTGTCAATGGACCCCTGCTGCCGAAAGAAGTCCAGAAGAAGGGGGCCAGCCAGAGCTTCAGTAAAG  
GCGGAAGGCTCAAGTGGCAGTCCCTGGAGCGACGGATCATTGACATCGTCATGCAGAGAATGACCATTTG  
TCAACCTGGAGGCTGACATGGAGCGGCTCATCAAGAAAAGGGAGGAGCTGTTCTCTGCAAGGAGGCACT  
GCGGAGGAAGCGGGAGCGGCTGCAGGCTGAGAGCCCCGAGGAAGAGAAGGGGCTGCAGGAGCTGGCTGAG  
GAGATCGAGGTGCTGGCAGCCAACATTGACTACATCAATGACGGCATCACCGACTGCCAGGCCACCATCG  
TGCAGCTGGAGGAGACCAAGGAGGAGCTGGACTCCACAGACACATCCGTGGTCAACAGCTCTGCTCCCT  
GGCTGAAGCCCGCTCCTGCTAGACAATTCCTCAAGGCATCCATTGACAAGGGGCTGCAAGTGGCACA  
AAGGAAGCCCAGATCCGGCTGTTGGAGGGCCGACTGAGGCAGCGATATGGCAGGCTCTCCAGCAACC  
ATCTGCTCCTGGACGCCCTGCGTGAGAAGGCTGAAGCTCACCCGAGCTGCAGGCCCTCATCTACAATGT  
GCAGCAGGAGAATGGCTACGCCAGCACAGATGAGGAGATCTCAGAGTTCTCTGAGGGCAGCTTCTCCAG  
TCATTCACCATGAAAGGCTCCACCAGCCATGACGATTTCAAGTTCAAGAGCGAGCCCAAAGTGTCTGCC  
AAATGAAAGCTGTGTCGGCTGAGTGCCTGGGCCCCCACTGGATATCTCCACCAAGAACATCACCAGTC  
CCTGGCTCCCTCGTTGAGATCAAAGAGGACGGAGTGGGCTTCTCTGTCCGAGACCCCTATTACCGGAC  
AGGGTCTCGCGCACCGTCACTGCTACCCGGGGCAGCACTTCCCTAGGCAATCTCGAGCCACAGAGA  
CGTCCCCGCTGACGAGAAGGAAGTCTACGACCGAGGGCAGCCATTAGGTCCACAGATGTGGGATTCAC  
ACCCCATCATCCCTCCCACTCGGCCCGCAATGACCGCAATGTCTTCTCGTCTCACCAGTAATCAG  
AGCCAGGGGTGACGCTGGACAAGTCTGATGACAGCGACTCCTCTTTGTGCGGAGGCTCCTGAGGGGATCA  
TCTCCCGGTTGGAGGAGCCAAGGTGCACGGACGGCCCACTGCAGTGTGTCTCCATGGCCGAAGGCCA  
CACCAAGCCATCCTCTGCCTGGATGCCACAGATGAGTTGCTATTCACAGGGTCCAAAGACCGAAGCTGC  
AAGATGTGGAAGTGGTTACGGGACAGGAGATCGCAGCTCTAAAGGGCCACCCCAACAACGTGGTCTCCA  
TCAAGTACTGCAGCCACTCGGGGCTTGTGTTCTCCGTGTCCACCTCCTACATCAAGGTGTGGGACATCCG  
GGACTCAGCCAAGTGCATTCCGACTCTCACGTCTCGGGCCAGGTGATCTCAGGGGATGCCTGTGCCGCC  
ACATCCACCCGTGCCATCACCAGTGTCTAGGGCGAGCATCAGATCAACCAGATCGCCCTCAGCCCTTCGG  
GCACCATGCTGTACGCCCTCGGGCAATGCCGTCCGCATCTGGGAGCTTAGCAGGTTCCAGCCCTGTCGG  
CAAGTACTGGCCACATCGGCCCTGTGATGTGCTGACGGTCAACCAGACGGCCAGCCAGCATGACCTC  
GTGGTACTGGCTCCAAGGACCACTACGTTAAGATGTTGAGCTGGGCGAGTGTGTGACGGGACCATCG  
GCCCCACTCACAACCTCGAGCCCCGCACTACGATGGCATCGAGTGTCTCGCCATCCAGGGAGACATCCT  
GTTCAAGTGGTCCCGAGATAACGGCATCAAGAAGTGGGACCTAGACCAGCAGGAGCTCATCCAGCAAATC  
CCCAATGCGCACAAAGGACTGGGTGTGCGCCCTGGCCTTCCATCCCGGGCCGCCCATGCTGCTCAGCGCT  
GCCGTGCGGGTGTATCAAGGTCTGGAACGTGGACAATTCACACCCATCGGTGAGATCAAGGGCCACGA  
CAGTCCCATCAATGCCATCTGCACCAATGCCAAGCATATCTTACAGCCTCCAGTACCTGACGGTGAAG  
TTCTGGAGTGTCCGGCGGTTACCCACAGCGGCCACCC

ACGCGTACGCGGGCCGCTCGAG - GFP Tag - GTTTAA

**Protein Sequence:** >RG235322 representing NM\_001252102  
 Red=Cloning site Green=Tags(s)

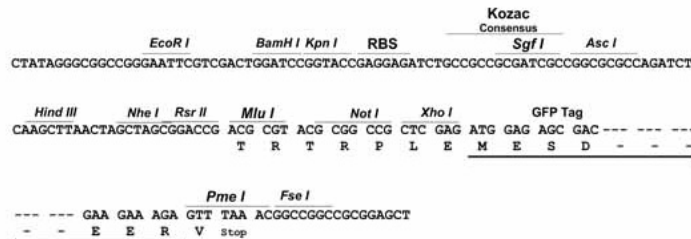
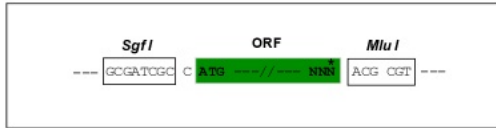
MAGQGDCCKVAVRIRPQLSKEKIEGCHICTSVTPGEPQVLLGKDKAFTYDFVFDLDTWQEQIYSTCVSK  
 LIEGCFEGYNATVLAYGQTGAGKTYTMTGTFDMATSEEEQGIIPRAIAHLFGGIAERKRRAEQGVAGPE  
 FKVSAQFLELYNEEILDLDSTRDPDTRHRRSNIKIHDANGGIYTTGVT SRLIHSQEELIQCLKQGALS  
 RTTASTQMNQSSRSIAIFTIHLQMRMCTQPDLYNEAVTGLPDGTPPSSEYETLTAKFHFDLAGSERL  
 KRTGATGERAKEGISINCGLLALGNVISALGDQSKKVVHVPYRDSKLRLLQDSLGGNSQTIMIACVSPS  
 DRDFMETLNTLKYANRARNIKNKVVVNQDKTSQQISALRAE IARLQMELEMEYKAGKRVIGEDGAEGYSDL  
 FRENAMLQKENGALRLRVKAMQEAIDAINNRTVQLMSQEANLLLAKAGDGNEAIGALIQNYIREIEELRT  
 KLLLESEAMNESLRRSLSRASARSPYSLGASPAAPAFGGSPASSMEDASEVIRRAKQDLERLKKKEVRQRR  
 KSPEKEAFKKRAKLQENSEETDENEAE EEEEEERDESGCEEEEGREDEDEDSGSEESLVSDSDPEEKEV  
 NFQADLADLTCEIEIKQKLIDELNSQRRLQTLKHQYEEKLILLQNKIRDQTLERDRLQNLSTMICYTE  
 EKANKIKADYEKRLREMNRLQKLQAAQKEHARLLKNQSRYERELKKLQAEVAEMKKAKVALMKQMRREEQ  
 QRRRLVETKRNREIAQLKKEQRRQEFQIRALESQKRQEMVLRRTQEVSA LRRLAKPMSERVAGRAGLK  
 PMLDSGAEVSATTSSEAE SGARSVSSIVRQWNRKINHFLGDHPAPT VNGTRPARKKFKKQKASQSF SK  
 AARLKWQSLERRIIDIVMQRMTIVNLEADMERLIKREELFLLQEALRRKRERLQAESPEEEKGLQELAE  
 EIEVLAANIDYINDGITDCQATIVQLEETKEELDSTDTSVVSSCSLAEARLLLDNFLKASIDKGLQVAQ  
 KEAQIRLLEGRRLQDTMAGSSQNHLLDALREKAEAPHELQALIYNVQQENGYASTDEEISEFSEGSFSQ  
 SFTMKGSTSHDDFKFKSEPKLSAQMKAVSAECLGPPLDISTKNITKSLASLVEIKEDGVGFSVRDPYYRD  
 RVSRTVSLPTRGSTFPRQSRATE TSPLTRRKS YDRGQPIRSTDVGFTPPSSPPTPRNDRNVFSRLTSNQ  
 SQGSALDKSDDSDSSLSEVL RGIISPVGGA KGARTAPLQCVSMAEGHTKPI LCLDATDELLFTGSKDRSC  
 KMWNLV TQGEIAALKGHPNNVVS IKYCSHSGLVFSVSTSYIKVWDIRDSAKCIRTLTSSGQV ISGDACAA  
 TSTRAITSAQGEHQINQIALSPSGTMLYASGNAVRIWELSRFPVPGKLTGHIGPV MCLTVTQTASQHDL  
 VVTGSKDHYVKMFELGECVTGTIGPTHNFEPHYDGECLA IQGDILFSGSRDNGIKKWLDQQELIQQI  
 PNAHKDWVCALAFIPGRPMLLSACRAGVIKVVNVDNFTP IGEIKGHDSPINAICTNAKHIFTASSDLTVK  
 FWSVRRLPHSGPP

TRTRPLE - GFP Tag - V

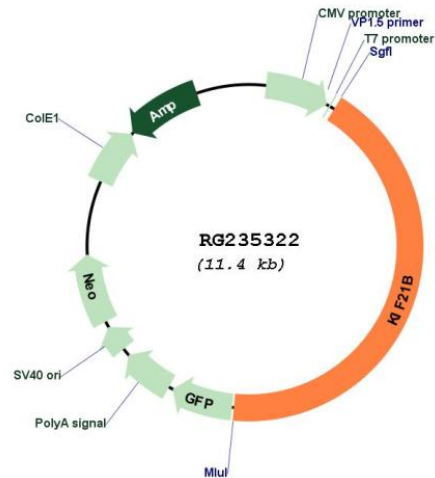
**Restriction Sites:** SgfI-MluI

**Cloning Scheme:**

Cloning sites used for ORF Shutting:



## Plasmid Map:



ACCN: NM\_001252102

ORF Size: 4869 bp

OTI Disclaimer: The molecular sequence of this clone aligns with the gene accession number as a point of reference only. However, individual transcript sequences of the same gene can differ through naturally occurring variations (e.g. polymorphisms), each with its own valid existence. This clone is substantially in agreement with the reference, but a complete review of all prevailing variants is recommended prior to use. [More info](#)

OTI Annotation: This clone was engineered to express the complete ORF with an expression tag. Expression varies depending on the nature of the gene.

Components: The ORF clone is ion-exchange column purified and shipped in a 2D barcoded Matrix tube containing 10ug of transfection-ready, dried plasmid DNA (reconstitute with 100 ul of water).

Reconstitution Method: 

1. Centrifuge at 5,000xg for 5min.
2. Carefully open the tube and add 100ul of sterile water to dissolve the DNA.
3. Close the tube and incubate for 10 minutes at room temperature.
4. Briefly vortex the tube and then do a quick spin (less than 5000xg) to concentrate the liquid at the bottom.
5. Store the suspended plasmid at -20°C. The DNA is stable for at least one year from date of shipping when stored at -20°C.

RefSeq: [NM\\_001252102.2](#)

RefSeq Size: 9339 bp

RefSeq ORF: 4872 bp

Locus ID: 23046

UniProt ID: [O75037](#)

Cytogenetics: 1q32.1

Protein Families: Druggable Genome

**Gene Summary:** This gene encodes a member of the kinesin superfamily. Kinesins are ATP-dependent microtubule-based motor proteins that are involved in the intracellular transport of membranous organelles. Single nucleotide polymorphisms in this gene are associated with inflammatory bowel disease and multiple sclerosis. Alternatively spliced transcript variants encoding multiple isoforms have been observed for this gene. [provided by RefSeq, Nov 2011]