

Product datasheet for **RG235317**

SLIT3 (NM_001271946) Human Tagged ORF Clone

Product data:

Product Type:	Expression Plasmids
Product Name:	SLIT3 (NM_001271946) Human Tagged ORF Clone
Tag:	TurboGFP
Symbol:	SLIT3
Synonyms:	MEGF5; SLIL2; Slit-3; SLIT1; slit2
Mammalian Cell Selection:	Neomycin
Vector:	pCMV6-AC-GFP (PS100010)
E. coli Selection:	Ampicillin (100 ug/mL)
ORF Nucleotide Sequence:	>RG235317 representing NM_001271946 Red=Cloning site Blue=ORF Green=Tags(s)

TTTTGTAATACGACTCACTATAGGGCGGCCGGAATTCGTCGACTGGATCCGGTACCGAGGAGATCTGCC
GCC**CGATCGCC**

ATGGCCCCGGGTGGCAGGGGTCGGCGCCGCGTGGCGCCCGCTGGCGCTGGCCTTGGCGCTGGCGA
GCGTCTGAGTGGGCTCCAGCGTCGCTGCCACCAAGTGTACCTGCTCCGCTGCCAGCGTGGACTG
CCACGGGCTGGGCTCCGCGGTTCTCGGGCATCCCCGCAACGCTGAGCGCCTTGACCTGGACAGA
AATAATATCACCAGGATACCAAGATGGACTTCGCTGGGCTCAAGAACCCTCCGAGTCTTGATCTGGAAG
ACAACCAGGTCAGCGTCATCGAGAGAGGGCGCTCCAGGACCTGAAGCAGCTAGAGCGACTGCGCCTGAA
CAAGAATAAGCTGCAAGTCCCTCCAGAATTGCTTTCCAGAGCACGCCGAAGCTCACAGACTAGATTTG
AGTGAAAACCAGATCCAGGGATCCCGAGGAAGCGTTCCGCGGCATCACCGATGTGAAGAACCTGCAAC
TGGACAACAACCACATCAGCTGCATTGAAGATGGAGCCTCCGAGCGCTGCGCGATTTGGAGATCCTTAC
CCTCAACAACAACATCAGTCGCATCCTGGTACCAGCTTCAACCACATGCCGAAGATCCGAACCTCTG
CGCCTCCACTCCAACCACCTGTACTGCGACTGCCACCTGGCTGGCTCTCGGATTGGCTGCGACAGCGAC
GGACAGTTGGCCAGTTCACACTCTGCATGGCTCCTGTGCATTTGAGGGGCTTCAAGTGGCGGATGTGCA
GAAGAAGGAGTACGTGTGCCAGCCCCCACTCGAGCCCCCATCTGCAATGCCAATCCATCTCCTGC
CCTTCGCCCTGCAGTGCAGCAATAACATCGTGGACTGTGAGGAAAGGGCTTGATGGAGATTCCTGCCA
ACTTGCCGAGGGCATCGTGAATAACGCTAGAACAGAACTCCATCAAAGCCATCCCTGCAGGAGCCTT
CACCCAGTACAAGAACTGAAGCGAATAGACATCAGCAAGAATCAGATATCGGATATTGCTCCAGATGCC
TTCCAGGGCTGAAATCACTCACATCGCTGGTCTGTATGGGAACAAGATCACCGAGATTGCCAAGGGAC
TGTTTGTGGGCTGGTGTCCCTACAGCTGCTCCTCAATGCCAACAAGATCAACTGCCTGCGGGTGAA
CACGTTTCAGGACCTGCAGAACCTCAACTTGTCTCCTGTATGACAACAAGCTGCAGACCATCAGCAAG
GGGCTCTCGCCCTCTGCAGTCCATCCAGACTCCACTTAGCCAAAACCCATTTGTGTGCGACTGCC
ACTTGAAGTGGCTGGCCGACTACCTCCAGGACAACCCATCGAGACAAGCGGGGCCGCTGCAGCAGCCC
GCGCCGACTCGCAACAAGCGCATCAGCCAGATCAAGAGCAAGAAGTCCGCTGCTCAGGCTCCGAGGAT



[View online »](#)

TACCGCAGCAGGTTACAGCAGCGAGTGCTTCATGGACCTCGTGTGCCCCGAGAAGTGTGCTGTGAGGGCA
CGATTGTGGACTGCTCCAACCAGAAGCTGGTCCGCATCCCAAGCCACCTCCCTGAATATGTACCAGCCT
GCGACTGAATGACAATGAGGTATCTGTTCTGGAGGCCACTGGCATCTTCAAGAAGTTGCCAACCTGCGG
AAAATAAATCTGAGTAAACAATAAGATCAAGGAGGTGCGAGAGGGAGCTTTCGATGGAGCAGCCAGCGTGC
AGGAGCTGATGCTGACAGGGAACCAGCTGGAGACCGTGCACGGGCGCGTGTCCGTGGCCTCAGTGGCCT
CAAAACCTTGATGCTGAGGAGTAACTTGATCGGCTGTGTGAGTAATGACACCTTTGCCGGCCTGAGTTCCG
GTGAGACTGCTGCCCTCTATGACAATCGGATCACCACCATCACCCTGGGGCCTTCACCACGCTGTCT
CCCTGTCCACCATAAACCTCCTGTCCAACCCCTTCAACTGCAACTGCCACCTGGCCTGGCTCGGCAAGTG
GTTGAGGAAGAGGCGGATCGTCACTGAGTGGGAACCCTAGGTGCCAGAAGCCATTTTTCTCAAGGAGATTCCC
ATCCAGGATGTGGCCATCCAGGACTTCACTGTGATGGCAACGAGGAGAGTAGTCCAGCTGAGCCCGC
GCTGCCCGGAGCAGTGCACCTGTATGGAGACAGTGGTGCATGCAGCAACAAGGGCTCCGCGCCCTCCC
CAGAGGCATGCCAAGGATGTGACCGAGCTGTACCTGGAAGGAAACCACCTAACAGCCGTGCCAGAGAG
CTGTCCGCCCTCCGACACCTGACGCTTATTGACCTGAGCAACAACAGCATCAGCATGCTGACCAATTACA
CCTTCAGTAACATGTCTACCTTCCACTCTGATCCTGAGCTACAACCGCTGAGGTGCATCCCCGTCCA
CGCCTTCAACGGGCTGCGGTCCCTGCGAGTGCTAACCTCCATGGCAATGACATTTCCAGCGTTCCTGAA
GGCTCCTTCAACGACCTCACATCTTTCCCATCTGGCGCTGGGAACCAACCCACTCCACTGTGACTGCA
GTCTTCGGTGGCTGTGCGAGTGGGTGAAGGCGGGTACAAGGAGCCTGGCATCGCCCGCTGCAGTAGCCC
TGAGCCCATGGCTGACAGGCTCCTGCTCACCACCCCAACCCACCGCTTCCAGTGCAAAGTACTCTGGTTT
TGCTGCCCAGGGCCAGTGGACATCAACATTGTGGCCAAATGCAATGCCTGCCTCTCCAGCCCGTGAAGA
ATAACGGGACATGCACCCAGGACCCTGTGGAGCTGTACCCTGTGCCTGCCCTACAGCTACAAGGGCAA
GGACTGCACTGTGCCATCAACACCTGCATCCAGAACCCTGTGAGCATGGAGGCACCTGCCACCTGAGT
GACAGCCACAAGGATGGGTTGAGCTGCTCCTGCCCTCTGGGCTTTGAGGGGACGGGTGTGAGATCAACC
CAGATGACTGTGAGGACAACGACTGCGAAAACAATGCCACCTGCGTGGACGGGATCAACAACACTCGTGTG
TATCTGTCCGCCTAACTACACAGGTGAGCTATGCGACGAGGTGATTGACCACTGTGTGCCTGAGCTGAAC
CTCTGTGACGATGAGGCCAAGTGCATCCCCCTGGACAAAGGATTAGCTGCGAGTGTGCTCCTGGCTACA
GCGGGAAGCTCTGTGAGACAGACAATGATGACTGTGTGGCCACAAGTGCAGCCACGGGGCCAGTGCCT
GGACACAATCAATGGCTACACATGCACCTGCCCCAGGGCTTCACTGGACCTTCTGTGAACACCCCCCA
CCCATGGTCTACTGCAGACCAGCCATGCGACCAAGTACGAGTGCAGAACGGGGCCAGTGCATCGTGG
TGCAGCAGGAGCCACCTGCCGCTGCCACCAGGCTTCCGCGGCCCCAGATGCGAGAAGCTCATCACTGT
CAACTTCGTGGGCAAAGACTCCTACGTGGAAGTGGCTCCGCCAAGTCCGACCCAGGCCAACATCTCC
CTGCAGGTGGCCACTGACAAGGACAACGGCATCCTTCTCTACAAAGGAGACAATGACCCCTGGCACTGG
AGCTGTACCAGGGCCACGTGCGGCTGGTCTATGACAGCCTGAGTCCCCTCCAACCACAGTGTACAGTGT
GGAGACAGTGAATGATGGGCAGTTTACAGTGTGGAGCTGGTGCAGCTAAACCAGACCCTGAACCTAGTA
GTGGACAAAGGAACTCCAAGAGCCTGGGGAAGCTCCAGAAGCAGCCAGCAGTGGGCATCAACAGCCCCC
TCTACCTTGGAGGCATCCCCACCTCCACCGGCTCTCTGCCTTGCAGGACGGACGGACCGGCTTAGG
CGGCTTCCACGGATGCATCCATGAGGTGCGCATCAACAACGAGCTGCAGGACTTCAAGGCCCTCCCACCA
CAGTCCCTGGGGTGTACCAGGCTGCAAGTCTGCACCGTGTGCAAGCAGGCTGTGCCGCTCCGTGG
AGAAGGACAGCGTGGTGTGCGAGTGCAGGCTGGACCGGCACTCTGCGATCAGGAGGCCCGGGA
CCCCTGCCTCGGCCACAGATGCCACCATGGAAAATGTGTGGCAACTGGGACCTCATACATGTGCAAGTGT
GCCGAGGGCTATGGAGGGGACTTGTGTGACAACAAGAATGACTCTGCAATGCCTGCTCAGCCTTCAAGT
GTCACCATGGGCAGTGCCACATCTCAGACCAAGGGGAGCCCTACTGCCTGTGCCAGCCCGCTTTAGCGG
CGAGCACTGCCAACAAGAGAATCCGTGCCTGGGACAAGTGTGCGAGAGGTGATCCGCGCCAGAAAAGGT
TATGCATCATGTGCCACAGCCTCCAAGGTGCCATCATGGAATGTGCGGGGGCTGTGGGCCAGTGTCT
GCCAGCCACCCGAGCAAGCGGCGAAAATACGTCTTCCAGTGCACGGACGGCTCCTCGTTGTAGAAGA
GGTGGAGAGACACTTAGAGTGGGCTGCCTCGCGTGTCC

ACGCGTACGCGGCCGCTCGAG - GFP Tag - GTTTAA

Protein Sequence: >RG235317 representing NM_001271946
 Red=Cloning site Green=Tags(s)

```

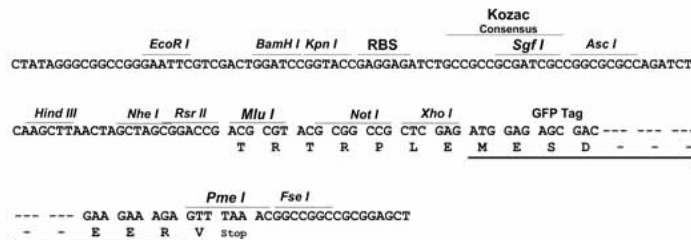
MAPGWAGVGA AVRARLALALASVLSGPPAVACPTKCTCSAASVDCHLGLRAVPRGIPRNERLDLDR
NNITRITKMDFAGLKNLRVHLLEDNQVSVIERGAFQDLKQLERLRNKNKLOVPELLFQSTPKLTRLDL
SENQIQGIPRKA FRGITDVKNLQLDNNHISCI EDGAFRALRDLEILTLNNNNISRLVTSFNHMPKIRTL
RLHSNHL YCDCHLAWLSDWLRQRRTVGQFTLCMAPVHLRGFNADVQKKEYVCPAPHSEPPSCNANSISC
PSPCTCSNNIVDCRGKGLMEIPANLPEGIVEIRLEQNSIKAIPAGAF TQYKCLKRIDISKNQISDIAPDA
FQGLKSLTSLVLYGNKITEIAKGLFDGLVSLQLLLL NANKINCLRVNTFQDLQNLNLLSLYDNKLTISK
GLFAPLQSIQTLHLAQNPFCVCDCHLKWADYLQDNPIETSGARCSSPRRLANKRISQIKSKKFRCSGSED
YRSRFSSECFMDLVCPEKCRCEGTIVDCSNQKLVRI PSHLPEYVTDLRLNDNEVSVLEATGIFKKLPNLR
KINLSNNKIKEVREGAFDGAASVQELMLTGNQLET VHGRVFRGLSGLKTLMLRSNLIGCVSNDTFAGLSS
VRLLSLYDNRITITIPGAF TTVSLSTINLLSNPFNCNCHLAWL GKWLRKRRI VSGNPRCQKPFFLKEIP
IQDVAIQDFTCDGNEESSQLSPRCPEQCTCMETVVRCSNKGLRALPRGMPKDVTELYLEG NHLTAVPRE
LSALRHLTLIDL SNNSISMLTNYTF SNMSHLSTLILSYNRLRCIPVHAFNGLRSLRVLTLHGNDISSVPE
GSFNDL TSLSHLALGTNPLHDCDSLRLWSEWVKAGYKEPGIARCSSPEPMADRLLLTTPTHR FQCKVLWF
CCPGPVDINIVAKCNACLSSPCKNNGTCTQDPVELYRCACPYSYKGDCTVPINTCIQNP CQHGGTCHLS
DSHKDGFSCSCLPFEGQRCEINPDDCEDNDCENNATCVDGINNYVICPPNYTGELCDEVIDHCPELN
LCQHEAKCIPLDKGFSCECVPGYSGKLCETDNDDCVAHKCRHGAQCVD TINGYTC TPCQGFSGPFCEHPP
PMVLLQTSPCDQYECQNGAQCI VVQQEPTCRCPGFA GPRCEKLI TVNFV GKDSYVELASAKVRPQANIS
LQVATDKDNGILLYKGDNDPLALEL YQGHVRLVYDSL SSPPTTVYSVETVNDGQFH SVELVTLNQTLNLV
VDKGTPKSLGKLQKQPAVGINSPLYLGGIPTSTGLSALRQGTDRPLGGFHGCIHEVRINNELQDFKALPP
QSLGVSPGCKSCTVCKHGLCRSVEKDSV VCECRPGWTGPLCDQEARDPCLGHRCHHGKCVATGTSYMCKC
AEGYGGDLCDNKNSANACSAFAKCHHGQCHI SDQGEPYCLCQPGFSGEHCQQENPCLGQVREVI RRQKG
YASCATASKVPIMECRGGCGPQCQPTRSKRRKYVFQCTDGSSFVEEVERHLECGCLACS
  
```

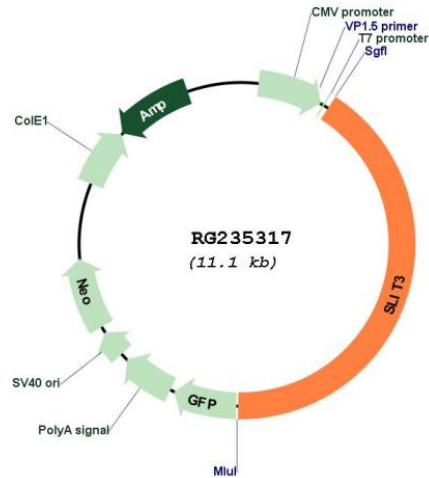
TRTRPLE - GFP Tag - V

Restriction Sites: SgfI-MluI

Cloning Scheme:

Cloning sites used for ORF Shutting:



Plasmid Map:


ACCN: NM_001271946

ORF Size: 4590 bp

OTI Disclaimer: The molecular sequence of this clone aligns with the gene accession number as a point of reference only. However, individual transcript sequences of the same gene can differ through naturally occurring variations (e.g. polymorphisms), each with its own valid existence. This clone is substantially in agreement with the reference, but a complete review of all prevailing variants is recommended prior to use. [More info](#)

OTI Annotation: This clone was engineered to express the complete ORF with an expression tag. Expression varies depending on the nature of the gene.

Components: The ORF clone is ion-exchange column purified and shipped in a 2D barcoded Matrix tube containing 10ug of transfection-ready, dried plasmid DNA (reconstitute with 100 ul of water).

Reconstitution Method:	<ol style="list-style-type: none">1. Centrifuge at 5,000xg for 5min.2. Carefully open the tube and add 100ul of sterile water to dissolve the DNA.3. Close the tube and incubate for 10 minutes at room temperature.4. Briefly vortex the tube and then do a quick spin (less than 5000xg) to concentrate the liquid at the bottom.5. Store the suspended plasmid at -20°C. The DNA is stable for at least one year from date of shipping when stored at -20°C.
RefSeq:	<u>NM_001271946.1</u> , <u>NP_001258875.1</u>
RefSeq Size:	9748 bp
RefSeq ORF:	4593 bp
Locus ID:	6586
UniProt ID:	<u>O75094</u>
Cytogenetics:	5q34-q35.1
Protein Families:	Druggable Genome, Secreted Protein
Protein Pathways:	Axon guidance
Gene Summary:	The protein encoded by this gene is secreted, likely interacting with roundabout homolog receptors to effect cell migration. Two transcript variants encoding different isoforms have been found for this gene. [provided by RefSeq, Dec 2012]