

Product datasheet for **RG235315**

KIAA0586 (NM_001244192) Human Tagged ORF Clone

Product data:

Product Type: Expression Plasmids
Product Name: KIAA0586 (NM_001244192) Human Tagged ORF Clone
Tag: TurboGFP
Symbol: KIAA0586
Synonyms: JBTS23; SRTD14; Talpid3
Mammalian Cell Selection: Neomycin
Vector: pCMV6-AC-GFP (PS100010)
E. coli Selection: Ampicillin (100 ug/mL)
ORF Nucleotide Sequence: >RG235315 representing NM_001244192
Red=Cloning site Blue=ORF Green=Tags(s)

TTTTGTAATACGACTCACTATAGGGCGGCCGGAATTCGTCGACTGGATCCGGTACCGAGGAGATCTGCC
GCC**CGATCGCC**

ATGGTGTGCAGAAAGTGATTTTTCTAAAGACGTTGCAGTGCAAGTGTTCCTTTGGATAAAATAGAAGAGA
ACAACAAGCAAAAAGCAAATGACATCTTCACTTTCTCAGTATAACAATGGGACAGAAAGATGCTCTAAGAAC
AGTTTTAAAGCAAATGTCTCACTTTGTCTCACAGGCTGGAGTGATCACAGTGGGTGATCACAACTCAC
TGCAGTCTCTACCTCCTCAGGCTCATGAGATCCTCCACCTCAGCCTCCCGAGTAGCTGGGACTACAGAG
CTCAAAGCATGCCTGTTTTAAGGAAGTAAAGGTACATCTGTTAGAAGATGCAGGCATAGAGAAGGATGC
TGTTACTCAGGAGACTAGAATTTACCCAGTGGAATTGATTCAGCTACAACCGTGGCTGCAGCAACTGCT
GCTGCCATTGCAACCGCAGCTCCGTTGATAAAGGTGCAGAGTGATTTGGAAGCAAAAAGTCAATTCTGTTA
CAGAATTACTTAGTAAATTACAGGAGACTGATAAACACCTGCAACGTGTTACAGAGCAGCAAAACAAGCAT
TCAGAGGAAACAAGAGAAATTACATTGTCATGATCACGAAAAGCAAATGAATGTGTTTTATGGAGCAGCAC
ATAAGGCATCTTGAAAAGTTACAACAACAACAATAGATATTCAGACTCATTATAGTGTCTCACTCA
AGACTAGTAGTTTTAGCCTGTTAGTATGCCCTCCTCCAGAGCAGTGGAAAAGTATTCGGTAAAACCAGA
ACACCCTAATCTTGGTAGCTGTAATCCATCTTTATATAACACATTTGCTTCCAAACAAGCACCTTTAAAA
GAAGTTGAAGATACGAGTTTTGATAAACAGAAATCTCCTTTGGAGACACCAGCACCTCGAGATTTGCTC
CTGTACCTGTTTCAAGGGATGATGAACTATCAAAGAGGGAAAATCTTTTGGAAAGAAAAGAAAATATGGA
AGTGTCTGTGCACAGAGGAAATGTAAGACTATTGGAACAAATTTGAATAATAATGATTCTTTGACAAGA
AAAAGTGAATCATCAAACACCACCTCACTAACTAGGTCAAAAATAGGATGGACTCCTGAGAAAACAAACA
GATTTCTTCTGTGAAGAGCTAGAAAACAACTAAAGTACTATGCAGAAGTCTGATGATGTTCTTCATGA
CCTTGGCCAAAAGAGAAAAGAAACAATAGCATGGTCCAGCCAAAAGAATCTCTGAGTATGTTGAAGCTT
CCAGATCTTCCACAGAATTCTGTTAAGCTTCAAACAACCAATACAACAAGATCTGTATTGAAGATGCTG
AGAAGATTTTGAAGAGTACAAAACAATAAAAAAGTACTTGAAGAAAACCTGGAAGCTATTATTCGTGC
AAAAGATGGAGCTGCCATGTATTCGCTTATCAATGCTTTATCTACCAACAGAGAGATGTCAGAGAAAATT



[View online »](#)

AGGATCAGAAAGACAGTGGATGAATGGATTAATACTATTTCTGCAGAAATTCAGGATGAACTGTCAAGAA
 CAGATTATGAACAAAAAGATTTGATCAGAAGAATCAGAGAACCAAGAAAGGTCAGAATATGACTAAAGA
 TATTAGAACCAACACACAAGATAAACTGTCAACAAATCTGTAATTCAGAAACATTCTCAAAAGCAA
 ATAGAAGAGCATTTTAAAACTACCTATGAGGGGCATGCCTGCTCAAGTTTACAGAAAGAGAGAAAGG
 AAGGGCTTTTAAAGCAACCACAGTAATACAAGATGAAGATTATGTTACAAGTCTATGAAAGCCAGT
 TTATCAGGGCCATCGAAGCACTTTAAAAAGGACCATATCTCAGATTTAATCTCCATCTCCTAAGTCC
 AGACCACAGAGACCAAAAGTAATAGAACGAGTTAAAGGCACTAAGGTAAGTCAATAAGAACACAGACTG
 ACTTCTATGCAACAAAACCTAAGAAGATGGATTCTAAAATGAAACATTCTGTTCCCTGTGTTACCTCATGG
 CGATCAGCAATATTTGTTAGCCCAAGTAGAGAAATGCCTACTTTTTAGGTACATTGGAAGTCTACTG
 ATTCTATGGCAATTTTGTAGGACAAACCCAAAGTAATAGTGATACCATGCCACCTGCTGGAGTGATTG
 TCAGCAAGCCACACCCTGTAAGTGTGACTACTTCTATTCTCCATCATCTCGAAAAGTAGAACTGGAGT
 AAAGAACTAACATAGCCATTGTAGAAATGAAGTCAGAAAAAAGGATCCTCCTCAGCTTACTGTGCAG
 GTATTACCCAGTGTAGATATTGACAGCATTTCAAATAGTAGTGCTGATGCCTTTCACCTCTGTCTAGCC
 CCAAGAAGCATCTTCTCCTGTGCAAACTTGATAAAGACTCCAGAAATTATGAAGGTAGATGAAGA
 AGAGGTGAAGTTCCAGGAACTAATTTGATGAAATAATCGATGCATACAGGAAGAAGAAAAATGTGAT
 GAAATTCAGACTCTGAACCAATTTCTGGAGTTTAAACAGAAGTGTAAAGCTGATTCTACAAAATATAATG
 GTCCTCCATTTCCGCCAGTTGCTTCTACTTTTTAGCCCACTGCTGATATTCTGGATAAAGTAATTGAGAG
 AAAAGAAACACTGGAAAAAGCTTAATTCATGGGTAGAGCAAGAAATAATGTCAAGAAATATCTCTGGG
 CTCTTCCAGTCCAGCAACAGATTGCACCTAGTATCAGTGTTTTCAGTCAGTGAGACAAGTGAACCACTGA
 CTTCTGACATTGTGGAAGGAACAAGCAGTGGCGCCCTCCAGCTTTTTGTTGATGCTGGTGTCTGTGAA
 CTCAAATGTGATTAACATTTTGTAAACGAAGCTTGTGCTGAGACCATTGCTGTCATGCTGGGTGACAGA
 GAAGCAAGAAGCAAGGTCTGTGCTACAGGTGTTTCTGGGGATGCTTCAACAAATGAAACATATTTGC
 CGGCAAGAGTGTGCACCCCACTGCCTACCCACAGCCTACGCCTCCTTGCACCTTCTCACCTGCTTAA
 GGAGTGTGTTTTGGTAAAGACTCCAGATTCTTCTCCCTGTGATTCCGATCATGATATGGCTTTTCTGTG
 AAAGAAATATGTGCTGAAAAAGGAGATGATATGCCTGCCATCATGCTTGTAAACTCCAACAGTTACCC
 CTACTACTACACCTCCTCCAGCGCGGCAGTTTTTACCCCACTTTGTCAGATATTTCCATTGATAAATT
 GAAGGTATCAAGCCAGAGCTTCCCAAGCCATGGGGTGTGGAGACCTGCCACTGGAAGAAGAGAACCCT
 AACTCACCTCAAGAAGAACTTCAACAGAGCTATTGTAATGTCTGTGGCTAAGGATGAAGAACCAGAGA
 GTATGGATTTCCCTGCTCAGCCTCCACCTCCAGAGCCAGTTCCCTTATGCCATTTCTGCCGCCACCAA
 GGCCCCCTCCCCCTCACAGATGCCAGTTCTGATTCATCAACACTGGAGAGCACATTGAGTGTACTGTC
 ACTGAAACTGAACTTTAGATAAACCCATCTCTGAAGGAGAGATTTTATTTAGCTGTGGTCAAAAATTGG
 CCCCCAAGATTTTAGAAGATATAGGACTGTACCTGACAAAACCTTAATGATAGCTTATCCAGCACTCTGCA
 TGATGCCGTTGAAATGGAGGATGATCCTCCTAGTGAAGGGCAAGTGAATAGGATGTCCCATAAAAATTT
 CATGCAGATGCAATTTCTTTTGTAAACAAAACCAGGAGTCAGCAGTTTCCAGCAAGCAGTCTATC
 ATTCAGAGGACTTGGAAAAAGTGTGGGTGAACCTTAGTGAAGGACAAAGACCCAGCTAACAGCGGCAGC
 AGAGAACATCTTAATGGGACATTTCTCTATATGCAGCCACCTGTCACTAATACACAGTCTTTGGATCAA
 CAATGTGATCCTAAACATTATCTCGGCAATTTGACACAGTTTCAGGTAGTATTTATGAAGATTCATGTG
 CTAGTCATGGTCCAATGAGTTTGGGAGAATTGGAGTTGGAGCCAAATCTAAGCTGGTCTTCCCAAC
 ACTTCTGACAGCACAAGAAAATGATGTTAATTTACCAGTAGCCGCTGAAGATTTTTCCAGTACCAACTA
 AAGCAAAATCAGGATGTTAAGCAAGTTGAACACAAACCATCACAAAGTTACCTACGTGTTAGAAAATAAT
 CTGATATTGCACCTTACAGCAACAAGTTTACCAGGTGATATGGATCGGACACAATTGAGCTTATCC
 GTACCTCACATGTGATTTTTCAGGTGGGAAAGCAGTGCCACTCTCCGCTTACAGATGCCCCCTGCCAAG
 ATGTCAGTGATGCTGCCGTGAGTGAACCTCGAGGACTGCTCTCAGTCTCTGAGTCTCAGCACAATGCAGG
 AGGACATGGAGTCTTCGGGGCAGATACCTTC

ACGCGTACGCGGCCGCTCGAG - GFP Tag - GTTTAA

Protein Sequence: >RG235315 representing NM_001244192
 Red=Cloning site Green=Tags(s)

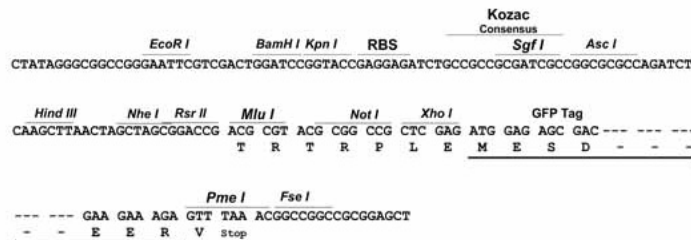
MVSEDFSKDVAVQVPLDKIEENKQKANDIFISQYTMGQKDALRTVLKQNVSLCLTGWSDHSGVITTH
 CSLYLLRLMRSSHLSPSSWDYRAQSMVPFKEVKVHLLLEDAGIEKDAVTQETRISPSGIDSATTVAATA
 AAIATAAPLIKVQSDLEAKVNSVTELLSKLQETDKHLQRVTEQQTSIQRKQEKLHCHDHEKQMNVMFEQH
 IRHLEKLQQQQIDIQTHFISAALKTSSFQPVSMPSRAVEKYSVKPEHPNLGSCNPSLYNTFASKQAPLK
 EVEDTSFDKQKSPLETPAPRRFAPVPSRDDEL SKRENLL EKENMEV SCHRGNVRLLEQILNNNDSLTR
 KSESSNTSLTRSKIGWTPKTNRFPSCEELETTKVMTQKSDDLHDLGQKEKETNSMVQPKESLSMLKL
 PDLQNSVKLQTTNTRSVLKDAEKILRGVQNNKVL EENLEAII RAKDGAAMYS LINALSTNREMSEKI
 RIRKTVDEWIKTISAEIQDEL SRTDYEQRFDQKNQRTKKQNMTKDIRTNTQDKTVNKSVIPRKHSQKQ
 IEEHFRNLPMRGMPASSLQKERKEGLLKATTVIQDEYMLQVYGKPVYQGHRSTLKKGPYLRFNSPSPKS
 RPQRPKVIERVKGTKVKSIRTQDFYATKPKKMSKMKHSVPVLPHGQQYLFSPSREMPFSGTLEGLH
 IPMAILLQGTQNSDTMPPAGVIVSKPHPVTVTTSIPPSSRKVETGVKKPNIAIVEMKSEKKDPPQLTVQ
 VLPVSDIDSISNSADVLSPLSSPKEASLPPVQTWIKTPEIMKVDEEEVKFPGTNFDEIIDVIEEKECD
 EIPDSEPILEFNRSVKADSTKYNGPPFPVASTFOPTADILDKVIERKETLENSLIQWVEQEIMSRIISG
 LFPVQQIAPSISVSVSETSEPLTSDIVEGTSSGALQLFVDAGVPVNSNVIKHFVNEALAEITAVMLGDR
 EAKKQGPVATGVS GDASTNETYL PARVCTPLPTPQTPPCSPSSPAKECVL VKTPDSSPCDSDHDMAFPV
 KEICAEGDDMPA IMLVNTPTVPTTPPPAAAVFTPTLSDISIDKLVSSPEL PKPWGDGLPLEENP
 NSPQEELHPRAIVMSVAKDEEPESMDFPAQPPPEVPFMPFPAGTKAPSPSQMPGSDSSTLESTLSVTV
 TETETLDKPISEGEILFSCGQKLAPKILEDIGLYLTNLNDSLSTLHDAVEMEDDPPSEGQVIRMSHKKF
 HADAILSFAKQNE SAVSQAVYHSEDL ENSV GELSEGQRPL TAAAENILMGHSLYMQPPVTNTQSLDQ
 QCDPKPLSRQFDTVSGS IYEDSCASHGPM SLGELELPNSKLVLP TLLTAQENDVNL PVA AEDFSQYQL
 KQNQDVKQVEHKPSQSYLRVRNKSDIAPSQQVSPGMDRTQIELNPYLTCVFSGGKAVPLSASQMPPAK
 MSVMLPSVNLEDCS QSLSLSTMQEDMESSGADTF

TRTRPLE - GFP Tag - V

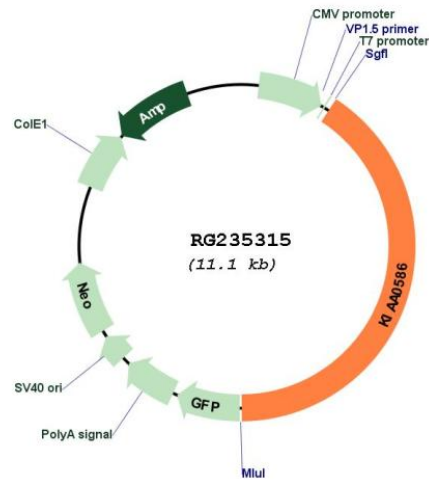
Restriction Sites: SgfI-MluI

Cloning Scheme:

Cloning sites used for ORF Shutting:



Plasmid Map:



ACCN: NM_001244192

ORF Size: 4512 bp

OTI Disclaimer: The molecular sequence of this clone aligns with the gene accession number as a point of reference only. However, individual transcript sequences of the same gene can differ through naturally occurring variations (e.g. polymorphisms), each with its own valid existence. This clone is substantially in agreement with the reference, but a complete review of all prevailing variants is recommended prior to use. [More info](#)

OTI Annotation: This clone was engineered to express the complete ORF with an expression tag. Expression varies depending on the nature of the gene.

Components: The ORF clone is ion-exchange column purified and shipped in a 2D barcoded Matrix tube containing 10ug of transfection-ready, dried plasmid DNA (reconstitute with 100 ul of water).

Reconstitution Method:

1. Centrifuge at 5,000xg for 5min.
2. Carefully open the tube and add 100ul of sterile water to dissolve the DNA.
3. Close the tube and incubate for 10 minutes at room temperature.
4. Briefly vortex the tube and then do a quick spin (less than 5000xg) to concentrate the liquid at the bottom.
5. Store the suspended plasmid at -20°C. The DNA is stable for at least one year from date of shipping when stored at -20°C.

RefSeq: [NM_001244192.2](#)

RefSeq Size: 5732 bp

RefSeq ORF: 4515 bp

Locus ID: 9786

UniProt ID: [Q9BVV6](#)

Cytogenetics: 14q23.1

Gene Summary: This gene encodes a conserved centrosomal protein that functions in ciliogenesis and responds to hedgehog signaling. Mutations in this gene causes Joubert syndrome 23. Alternative splicing results in multiple transcript variants and protein isoforms. [provided by RefSeq, Aug 2016]